

Clark County

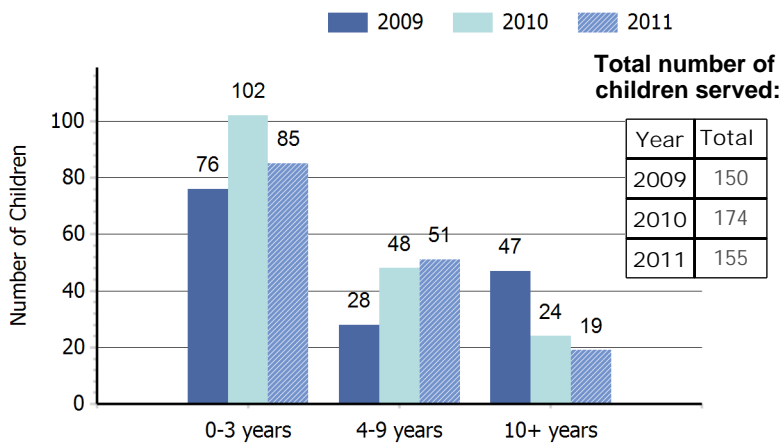
Profile of Children and Youth with Special Health Care Needs

Population of Children 0-19 Years by Age Group and Year

Age Group	1990	2000	2008	2009
0-4 years	18,872	26,886	32,535	33,190
5-9 years	19,469	28,279	31,244	31,584
10-14 years	19,067	27,996	30,851	31,010
15-19 years	17,039	24,876	30,287	30,344
Total	74,447	108,037	124,917	126,128

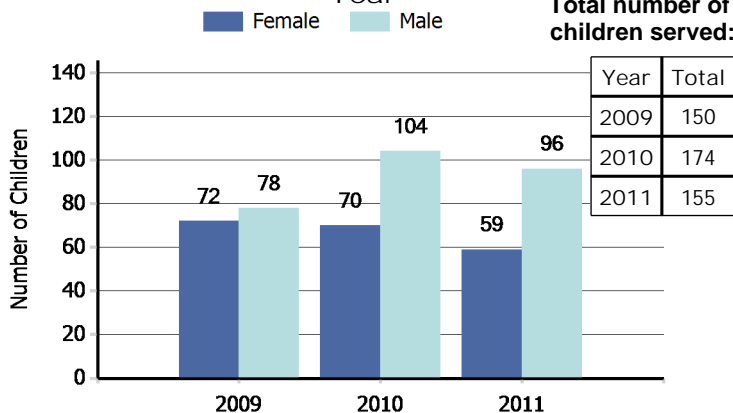
Source: Community Health Assessment Tool (CHAT), 1990-2009 Population Estimates: Population Estimates for Public Health Assessment, Washington State Department of Health and Krupski Consulting, December 2009. Accessed 12/9/11.

Number¹ of Children Served by Children with Special Health Care Needs Program by Age Group and Year



¹The number of children served by age may not equal the total number of children served due to non-reporting of age for some cases. Source: Child Health Intake Forms, Children with Special Health Care Needs Program, Washington State Department of Health, 5/15/12.

Number² of Children Served by Children with Special Health Care Needs Program by Gender and Year

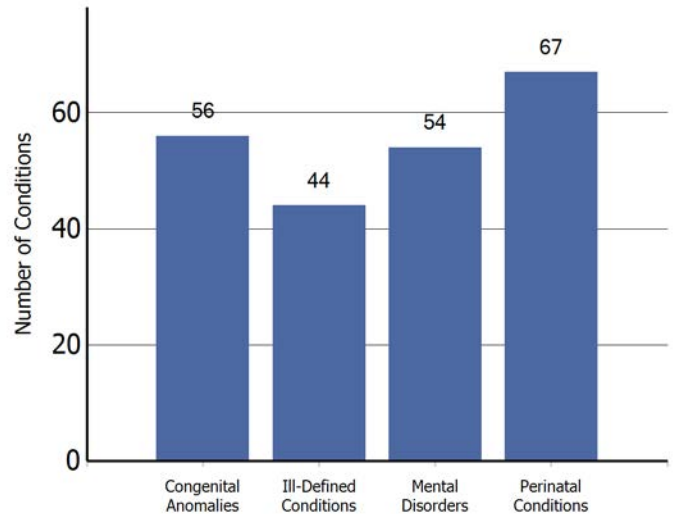


²The number of children served by gender may not equal the total number of children served due to non-reporting of gender for some cases. Source: Child Health Intake Forms, Children with Special Health Care Needs Program, Washington State Department of Health, 5/15/12.

"Children with special health care needs are children who have, or are at increased risk for, chronic physical, developmental, behavioral, or emotional conditions and who also require health and related services of a type or amount beyond that required by children generally."

(Maternal and Child Health Bureau)

Leading Four Diagnostic Categories³ among Children Served by the Children with Special Health Care Needs Program: 2011



³ Child may have multiple conditions.

Source: Child Health Intake Forms, Children with Special Health Care Needs Program, Washington State Department of Health, 5/15/12.

Number of Children in Special Education Services under the Individuals with Disabilities Education Act (IDEA) Part B, as of December 1, 2010

Diagnostic Category	Number
Specific Learning Disability	3,224
Communication Disorder	1,831
Health Impairment	1,458
Developmental Delay - Preschool	884
Autism	747
Emotional/Behavioral Disability	546
Intellectual Disabilities	323
Multiple Disabilities	195
Hearing Impairment	61
Orthopedic Impairment	34
Traumatic Brain Injury	24
Deafness	19
Visual Impairments	18
Deaf - Blindness	<5
TOTAL	9,364

Source: Office of Superintendent of Public Instruction, Special Education Child County and Placement Data, 1/3/12.

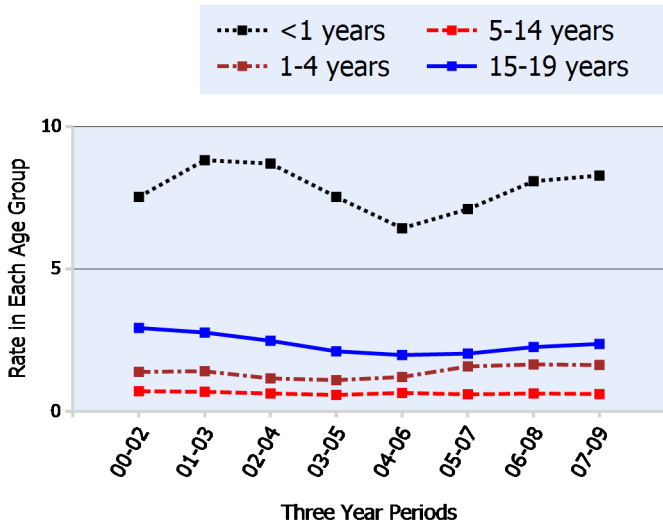
This county profile is part of the Children and Youth with Special Health Care Needs: Washington State Report. For more information, contact the Children with Special Health Care Needs Program at (360) 236-3571.

Number⁴ of Children Age 0-35 Months with an Individualized Family Service Plan Who Received Early Intervention Services

July 2009 - June 2010	278
July 2010 - June 2011	288

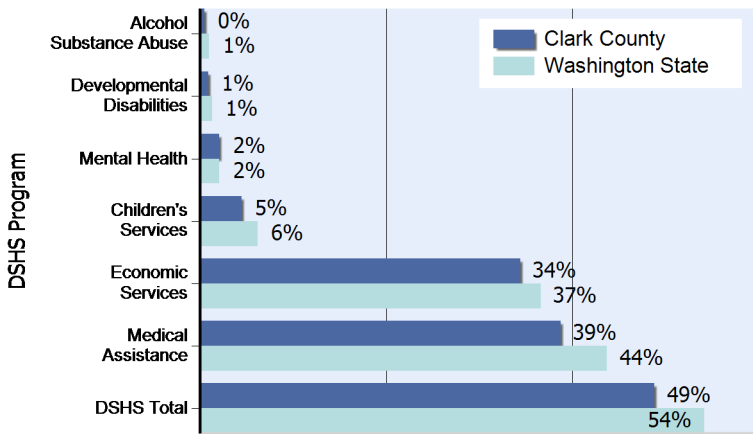
⁴Unduplicated count from Clark County.
Source: Early Support for Infants and Toddlers (ESIT), Washington State Department of Early Learning, Accessed 11/15/11. Program information and data are available at: <http://www.del.wa.gov/publications/esit/Default.aspx>.

Age-Specific Hospitalization Rate⁶ for Chronic Conditions per 1,000 Children Ages 0-19



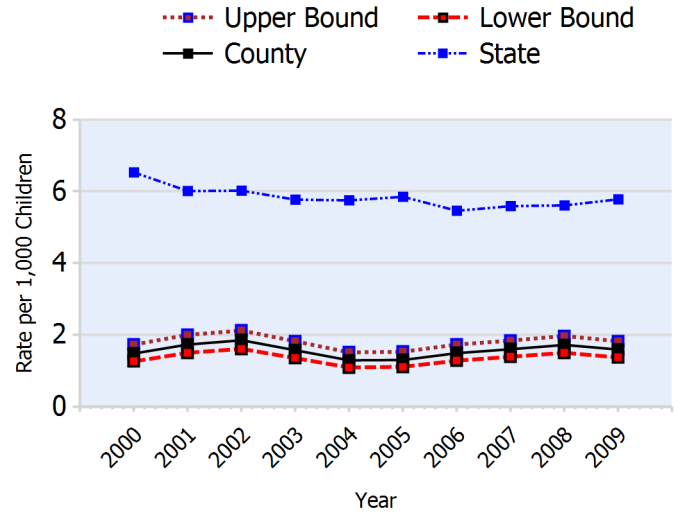
⁶ Number of hospitalizations per 1,000 population of children in each age group calculated as three-year rolling averages.
Source: Community Health Assessment Tool (CHAT), Hospitalization Discharge Data: Comprehensive Hospital Abstract Reporting System (CHARS), Washington State Department of Health, Center for Health Statistics, Accessed 9/21/11.

Percent of Children Age 0-17 in Programs of the Department of Social and Health Services:⁷ June 2007 - July 2008



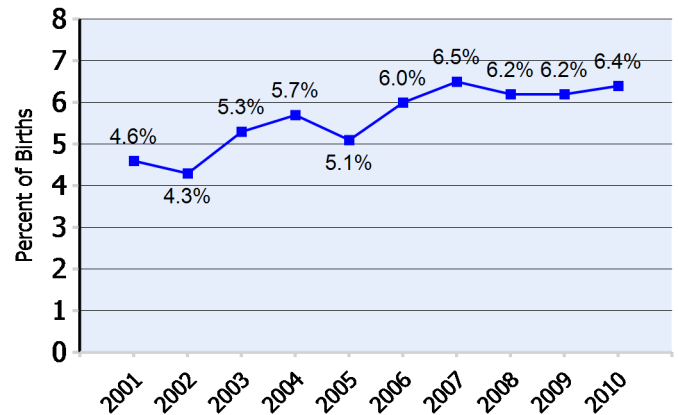
⁷Based upon unduplicated count of children within each service category.
Source: Client Services Database, Research and Data Analysis Division, Department of Social and Health Services, Accessed 11/15/11.
Note: In 2010, the Medical Assistance program moved from the Washington State Department of Social and Health Services to the Health Care Authority. Client data and program descriptions are available at <http://clientdata.rda.dshs.wa.gov/>.

Hospitalization Rate⁸ for Chronic Conditions per 1,000 Children Age 0-19 Years



⁸Number of hospitalizations per 1,000 population of children 0-19.
Source: Community Health Assessment Tool (CHAT), Hospitalization Discharge Data: Comprehensive Hospital Abstract Reporting System (CHARS), Washington State Department of Health, Center for Health Statistics, Accessed 9/21/11.

Number and Percent⁵ of Babies Born with Low Birth Weight (less than 2,500 grams)



⁵ Percent of births for which the birthweight is known.
Source: Washington State Birth Files, Washington State Department of Health, 11/15/11.

Number of Children 0-17 in DSHS Programs:		Year LBW All Births	
Alcohol Substance Abuse	554	2001	243 5,233
Developmental Disabilities	996	2002	205 4,816
Mental Health	2,416	2003	285 5,329
Children's Services	5,165	2004	315 5,539
Economic Services	39,133	2005	285 5,634
Medical Assistance	44,051	2006	350 5,787
DSHS Total	55,482	2007	386 5,901
		2008	365 5,849
		2009	346 5,577
		2010	348 5,478