

Month of February 2023

Executive Office of Resiliency and Health Security Youth Situation Report

Purpose

The intended audience for this report includes response planners and any organization responding to or helping to mitigate the negative health impacts of emerging and existing events.

Please note this report is based on the most recent available data from various sources. As such, different sections may present information for different reporting periods.

Data presented in this report are for individuals ages **18 and below** unless otherwise specified.

As of January 9, 2023, this report has been updated to remove data that are no longer beneficial to the Executive Office of Resiliency and Health Security (ORHS). If mission critical information has been removed, please contact Alaine Ziegler at Alaine.Ziegler@doh.wa.gov to address the data.

Key Takeaways

For the most recent reporting period ([CDC Week¹ 5](#), week February 4, 2023) two of the four syndromic indicators (psychological distress and suspected drug overdose) **increased** from the previous reporting period (CDC weeks 1-4). For the most current reporting period, suicidal ideation and suspected suicide attempt **decreased**. For the current week, psychological distress, suicidal ideation, and suspected suicide attempt are decreasing, and suspected drug overdose is **increasing**.

- Statistical warnings were issued for psychological distress, suicidal ideation, suspected suicide attempt, and suspected drug overdose based on the youth's reported race.
- Statistical alerts were issued for psychological distress, suicidal ideation, suspected suicide attempt and suspected drug overdose based on the youth's reported race or ethnicity.

[Survey data](#) collected by the U.S. Census Bureau for December 9 – 19, 2022, show a 28% **decrease** of respondents who have a baby or infant under 1 year of age, who have been affected by the infant formula shortage.

¹<https://ibis.doh.nm.gov/resource/MMWRWeekCalendar.html#part2>

Filings from the Administrative Office of the Courts (AOC) show the December 2022 year-over-year² percentage change for sex crimes **increased** 8%, robberies **decreased** 18%, assaults **increased** 29%, thefts/burglaries **decreased** 26%, motor vehicle thefts **increased** 40%, and controlled substances **did not change** compared to the previous year.

Impact Assessment

Syndromic Surveillance

The Department of Health collects syndromic surveillance data in near real-time from hospitals and clinics across Washington. Key data elements reported include patient demographic information, chief complaint, and coded diagnoses.

Statistical warnings (yellow dot), and alerts (red dot), are raised when a CDC algorithm detects a weekly count at least three standard deviations³ above a 28-day average count, ending three weeks prior to the week with a warning or alert. These warnings or alerts are indicated as needed, within each respective syndrome section. Alerts indicate more caution is needed than a warning.

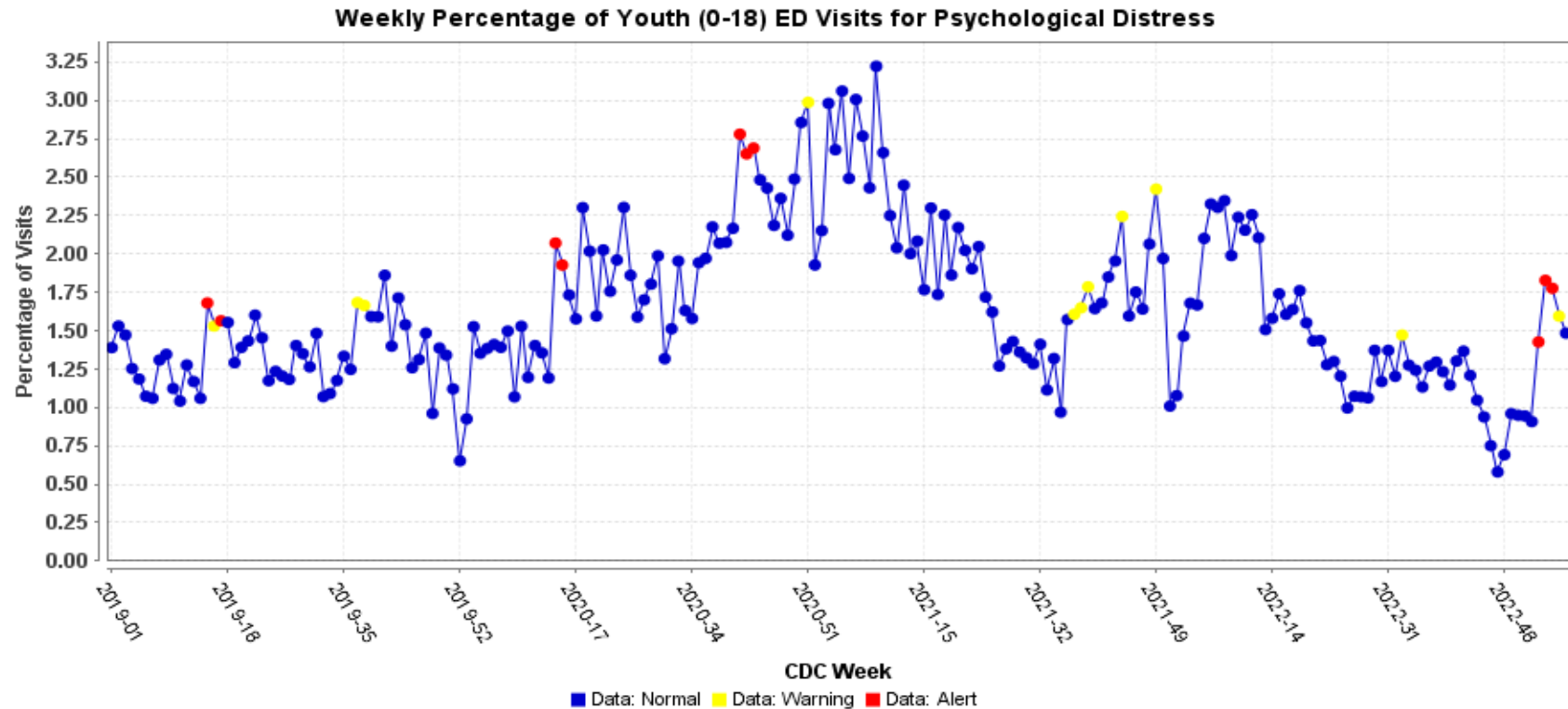
² Year-over-year: a comparison of two or more years, for example, 2019 to 2020, 2021, 2022, and 2023 to date.

³ Standard deviation: A measure of the amount of variation or dispersion of a set of values. Standard deviation is often used to measure the distance of a given value from the average value of a data set.

Psychological Distress

During CDC Week 5 (week of February 4, 2023), the reported relative percentage of emergency department (ED) visits for psychological distress⁴ among youth **increased** from the previous reporting period (CDC weeks 1-4), and the current week is **decreasing** (Graph 1). For CDC week 3, statistical alerts were issued for youth who reported their race as “white,” their ethnicity as “Not Hispanic or Latino,” or their gender as “male.” For CDC week 4 an alert was issued for youth who report their race as “Asian.”

Graph 1: Percentage change of ED visits for psychological distress among youth in Washington, by week (Source: CDC ESSENCE)

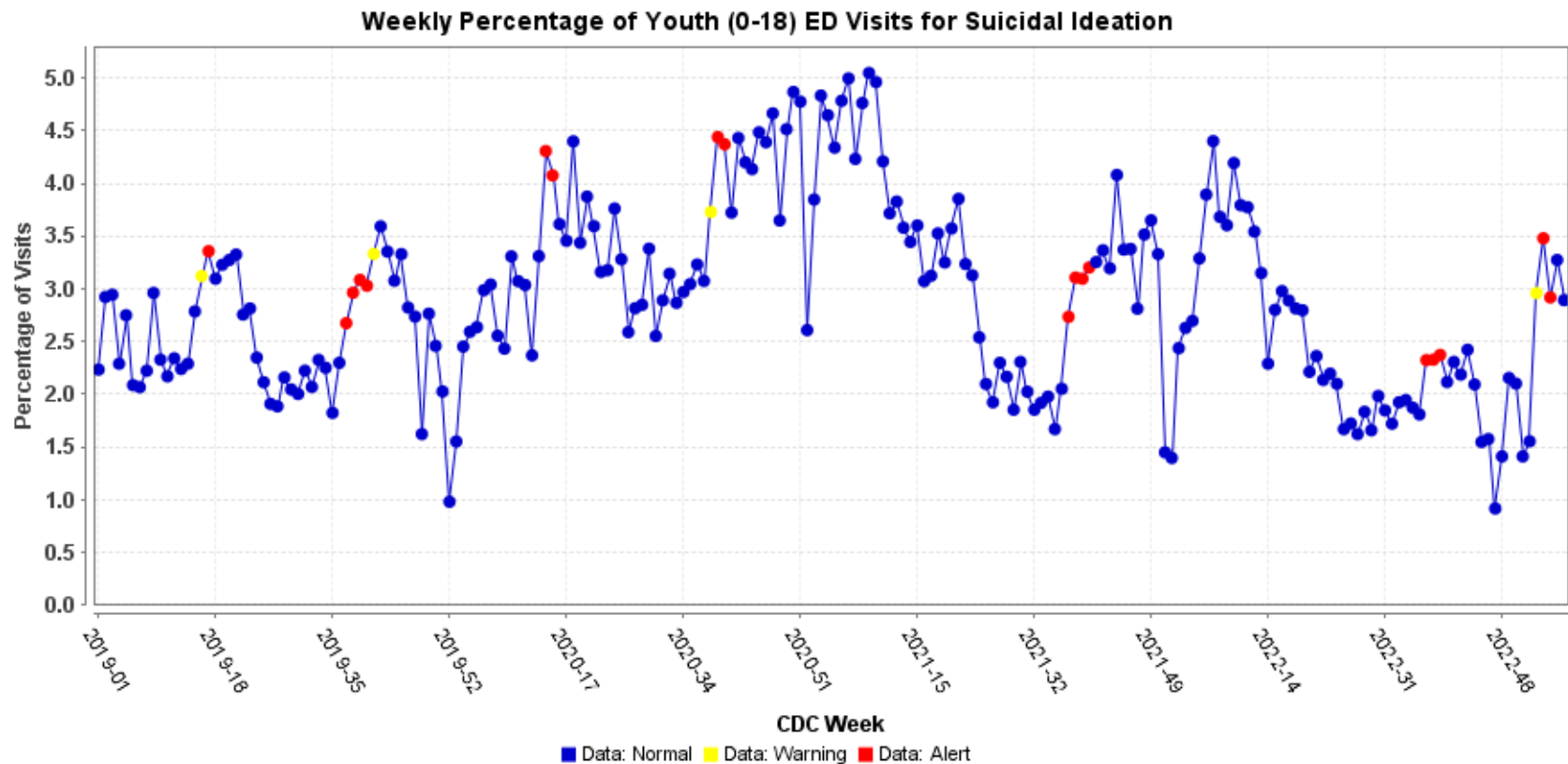


⁴ Psychological distress in this context is considered a disaster-related syndrome comprised of panic, stress, and anxiety. It is indexed in the Electronic Surveillance System for the Early Notification of Community-based Epidemics (ESSENCE) platform as Disaster-related Mental Health v1. Full details are available at <https://knowledgerepository.syndromicsurveillance.org/disaster-related-mental-health-v1-syndrome-definition-subcommittee>.

Suicidal Ideation and Suspected Suicide Attempt

During CDC Week 5 (week of February 4, 2023), the reported relative percentage of ED visits for suicidal ideation among youth **decreased** from the previous reporting period (CDC weeks 1-4), and the current week is **decreasing** (Graph 2). For CDC week 3, alerts were issued for youth who report their race as “American Indian or Alaska Native” and their ethnicity as “Hispanic or Latino.” For week 3, warnings were issued for youth who report their race as “Asian,” “Black or African American,” or “Native Hawaiian or Other Pacific Islander.”

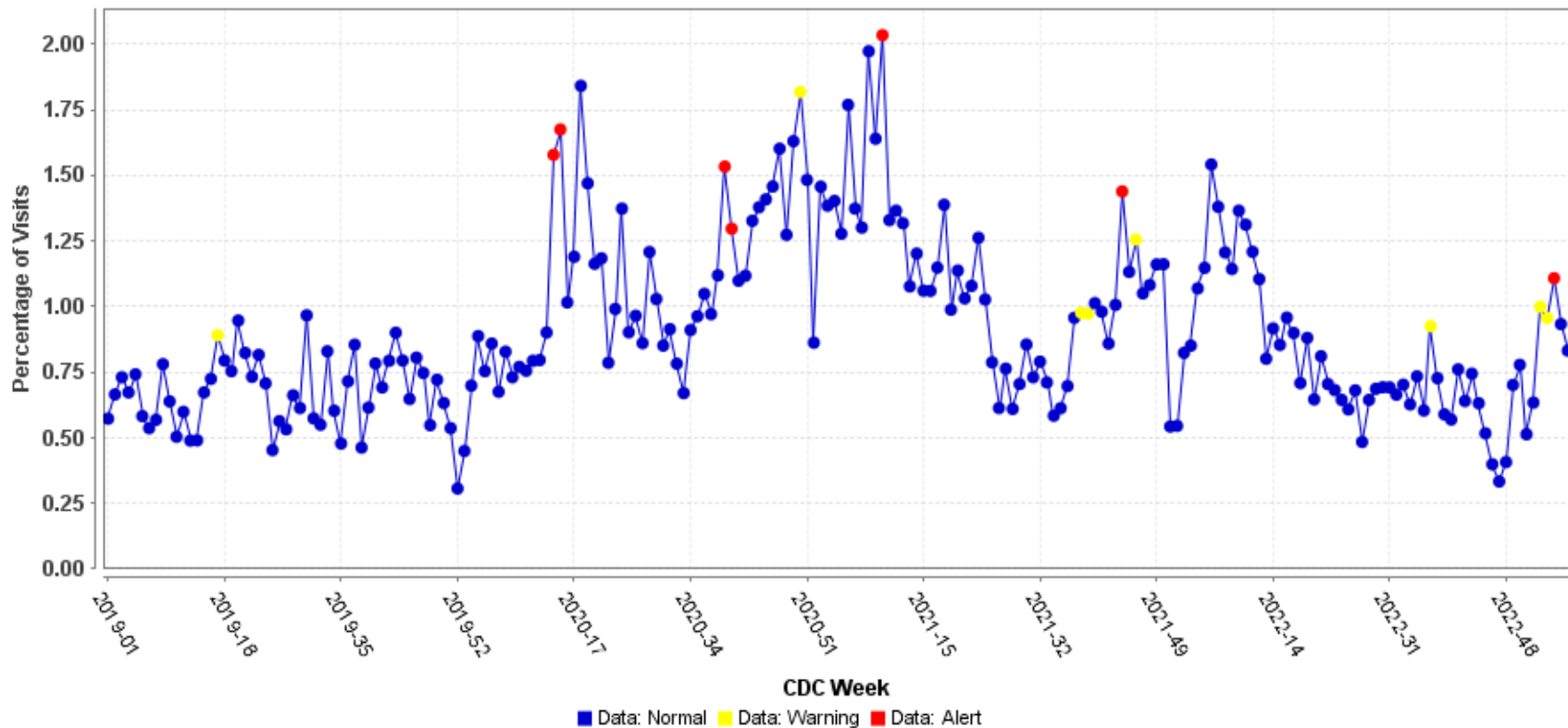
Graph 2: Percentage change of ED visits for suicidal ideation among youth in Washington, by week (Source: CDC ESSENCE)



During CDC Week 5 (week of February 4, 2023), the reported relative percentage of ED visits for suspected suicide attempt among youth **decreased** from the previous reporting period (CDC weeks 1-4), and the current week is **decreasing** (Graph 3). For CDC week 3, a warning was issued for youth who report their race as “American Indian or Alaska Native.”

The current CDC definition for suspected suicide attempt, due to its broad inclusion of intentional self-harm behaviors that may or may not be interpreted as a suicidal act, could artificially inflate both the count and percent of such visits.⁵

Graph 3: Percentage change of ED visits for suspected suicide attempt among youth in Washington, by week (Source: CDC ESSENCE)
Weekly Percentage of Youth (0-18) ED Visits for Suicide Attempts

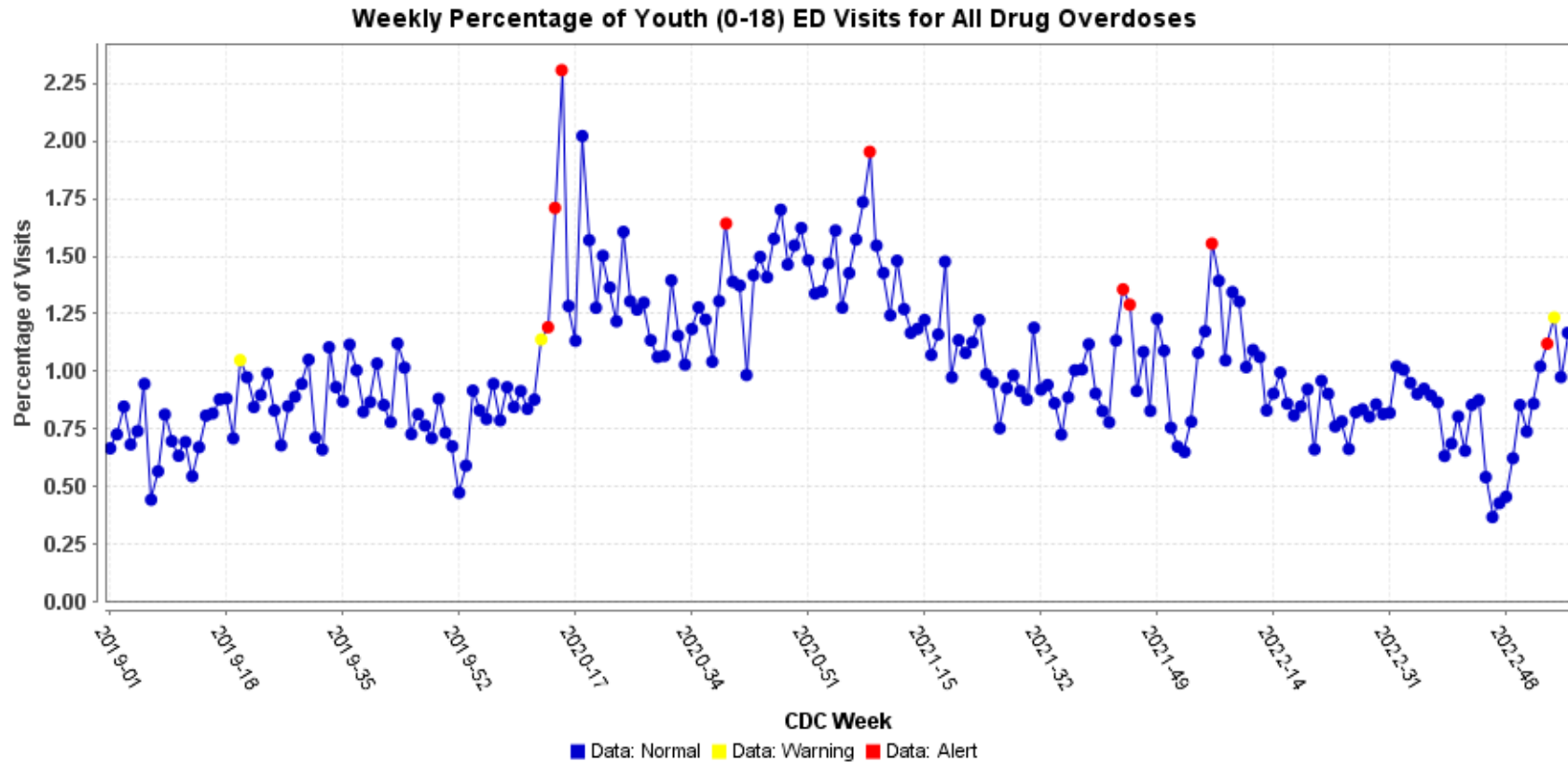


⁵ <https://knowledgerepository.syndromicsurveillance.org/disaster-related-mental-health-v1-syndrome-definition-subcommittee>

Substance Use – All Drug-Related Overdose

During CDC Week 5 (week of February 4, 2023), the reported relative percentage of all drug⁶-related overdose ED visits among youth **increased** from the previous reporting period (CDC weeks 1-4), and the current week is **increasing** (Graph 4). For CDC week 3, a warning was issued for youth who report their ethnicity as “Hispanic or Latino.”

Graph 4: Percentage change for all drug-related ED visits among youth in Washington, by week (Source: CDC ESSENCE)



⁶ All drug: This definition specifies overdoses for any drug, including heroin, opioid, and stimulants. It is indexed in the Electronic Surveillance System for the Early Notification of Community-Based Epidemics (ESSENCE) platform as CDC All Drug v1. Full details available at <https://knowledgerepository.syndromicsurveillance.org/cdc-all-drug-v1>

General Surveillance

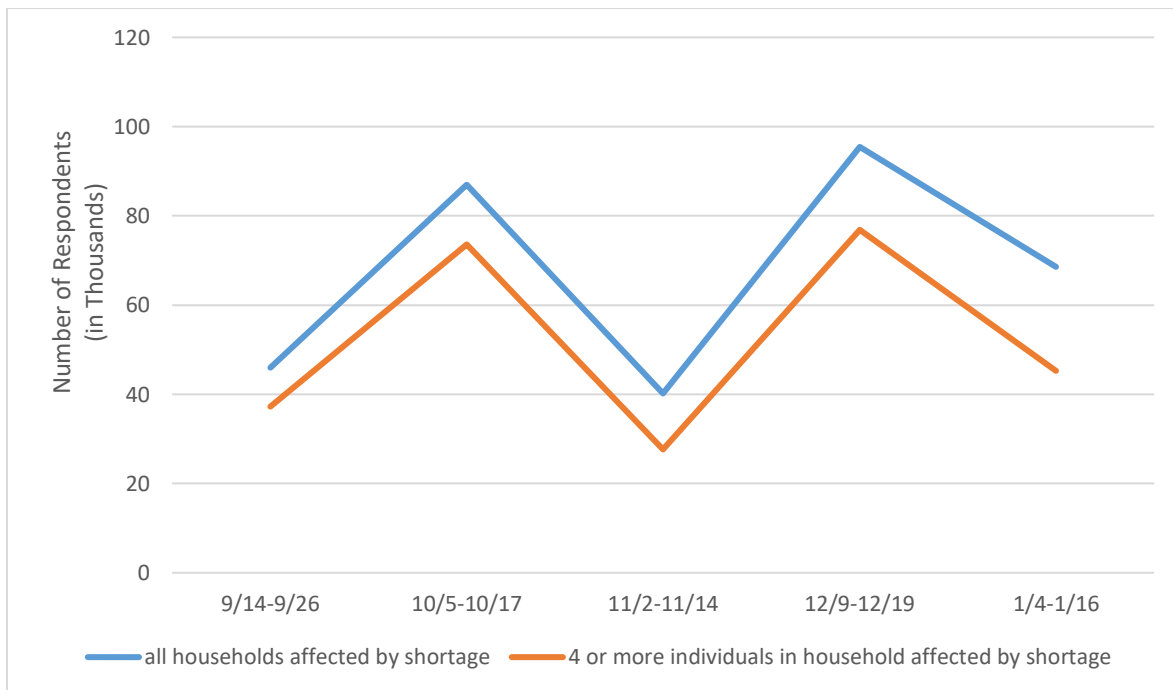
Infant formula shortage

[Survey data](#) collected by the U.S. Census Bureau for January 4 – 16, 2023, show a 28% **decrease** in respondents (who are Washington adults with children under age 5) who have a baby or infant under 1 year of age, and have been affected by the infant formula shortage compared to the previous reporting period. Households with four or more individuals show a 41% decrease compared to the previous reporting period.

Of those affected, 66% of households reported having four or more individuals in the household compared to the previous reporting period. Graph 5 shows the number of respondents who have been affected by the shortage.

Approximately 12,700 (1.63%) of respondents affected by the infant formula shortage identified as Lesbian, Gay, Bisexual, or Transgender.

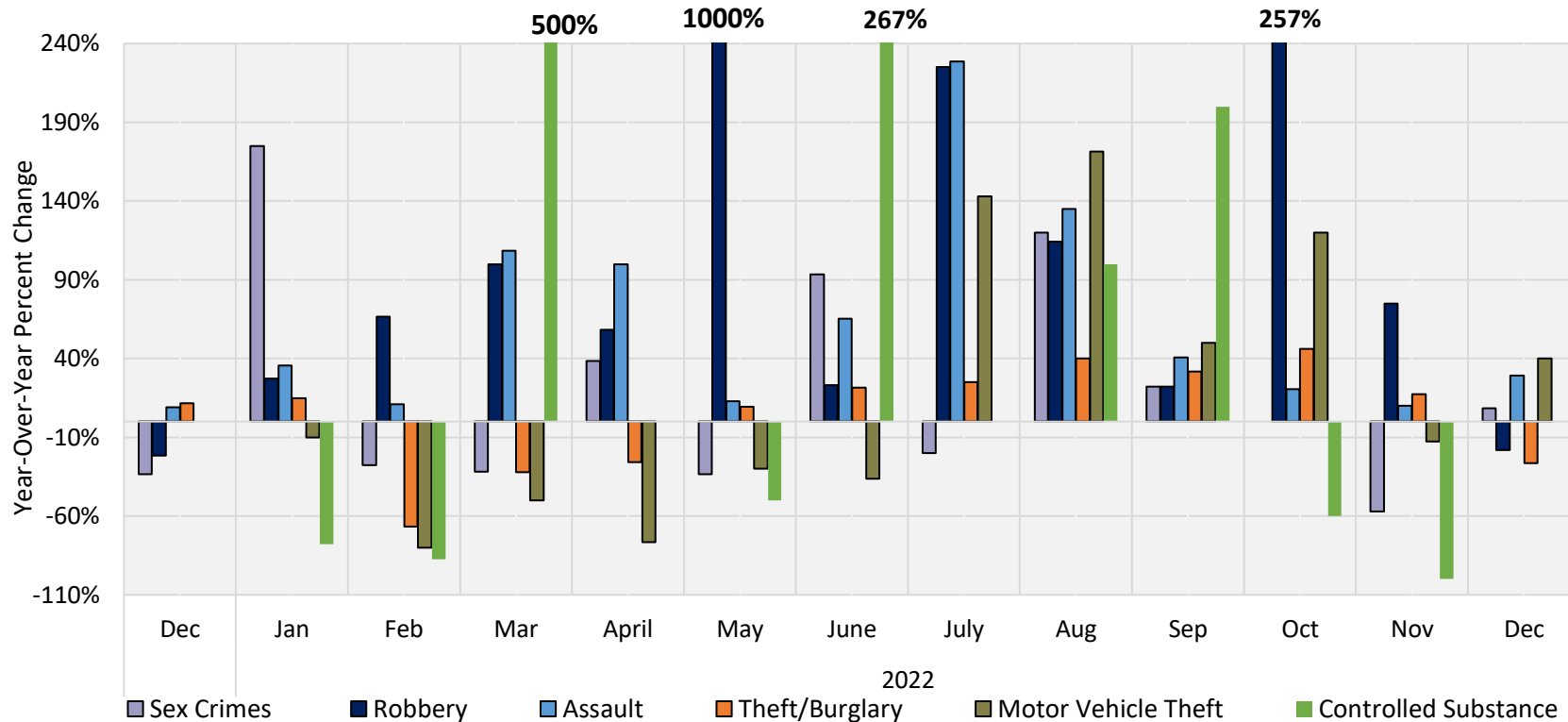
Graph 5: Number of Respondents who have been affected by the infant formula shortage
(Source: U.S. Census Bureau)



Juvenile Offender Filings

Case filings from the Washington State Administrative Office of the Courts (AOC) for each juvenile offender are categorized by the primary (i.e., most serious) charge. The year-over-year percentage changes for December 2022 for these filings show sex crimes **increased 8%**, robberies **decreased 18%**, assaults **increased 29%**, thefts/burglaries **decreased 26%**, motor vehicle thefts **increased 40%**, and controlled substances **did not change** compared to the previous year (Graph 6).

Graph 6: Percentage change of juvenile offender filings, by charge and month (Source: AOC)



Note: **Sex crimes** involve sexual exploitation of a minor, incest, rape, statutory rape, or indecent liberties. **Robbery** involves theft of property by the use of force, violence, or fear of injury to a person or their property. **Assault** involves assault or intent to cause another person physical harm, including malicious harassment and coercion. **Theft/burglary** involves theft of property (other than a motor vehicle), possession of stolen property, extortion, burglary, or criminal trespass. **Motor vehicle theft** involves taking a motor vehicle without permission of the owner. **Controlled Substances** involves cases where the primary charge involves violation of the Uniform Controlled Substances Act (UCSA) or violation of regulations regarding prescription drugs.

Resources

[Weekly U.S. Influenza Surveillance Report | CDC](https://www.cdc.gov/flu/weekly/index.htm)⁷

[Influenza Surveillance Data | Washington State Department of Health](https://doh.wa.gov/data-statistical-reports/diseases-and-chronic-conditions/communicable-disease-surveillance-data/influenza-surveillance-data)⁸

[RSV State Trends - NREVSS | CDC](https://www.cdc.gov/surveillance/nrevss/rsv/state.html#WA)⁹

[RSV in Infants and Young Children | CDC](https://www.cdc.gov/rsv/high-risk/infants-young-children.html)¹⁰

[Washington Shelter List](https://www.shelterlist.com/state/washington)¹¹ (warming shelters)

[Be Prepared, Be Safe | Washington State Department of Health](https://doh.wa.gov/emergencies/be-prepared-be-safe)¹² (general emergency response resources)

[Behavioral Health Resources and Recommendations | Washington State Department of Health](https://doh.wa.gov/emergencies/covid-19/healthcare-providers/behavioral-health-resources)¹³

Acknowledgements

This document was developed by the Washington State Department of Health's Behavioral Health Epidemiology Team. Lead author is Alaine Ziegler, MPH.

Syndromic graphs are provided by The Rapid Health Information NetwOrk (RHINO) team. They can be contacted at RHINO@doh.wa.gov.¹⁴ RHINO work requests can be submitted here: <https://app.smartsheet.com/b/form/363e054d62fe4850912687b509c6f9c7?confirm=true>.¹⁵

To request this document in another format, please call 1-800-525-0127. Deaf or hard of hearing customers, call 711 ([Washington Relay](https://www.dshs.wa.gov/altsa/odhh/telecommunication-relay-services))¹⁶ or email civil.rights@doh.wa.gov.¹⁷

⁷ <https://www.cdc.gov/flu/weekly/index.htm>

⁸ <https://doh.wa.gov/data-statistical-reports/diseases-and-chronic-conditions/communicable-disease-surveillance-data/influenza-surveillance-data>

⁹ <https://www.cdc.gov/surveillance/nrevss/rsv/state.html#WA>

¹⁰ <https://www.cdc.gov/rsv/high-risk/infants-young-children.html>

¹¹ <https://www.shelterlist.com/state/washington>

¹² <https://doh.wa.gov/emergencies/be-prepared-be-safe>

¹³ <https://doh.wa.gov/emergencies/covid-19/healthcare-providers/behavioral-health-resources>

¹⁴ RHINO@doh.wa.gov

¹⁵ <https://app.smartsheet.com/b/form/363e054d62fe4850912687b509c6f9c7?confirm=true>

¹⁶ <https://www.dshs.wa.gov/altsa/odhh/telecommunication-relay-services>

¹⁷ civil.rights@doh.wa.gov