



Clean Energy Transformation Act (CETA)  
Cumulative Impacts Analysis (CIA)

Community CETA Webinar, May 2021

# Webinar Overview

- An overview of how community input was gathered to inform creation of the Environmental Health Disparities map
- A brief history of the collaborative development of the map
- How to use the map, including how to identify if you are in a highly impacted community and what utility covers your area, and what legislation is using the map
- How Puget Sound Energy is approaching equity provisions in CETA
- Hearing from You

## Questions for You

Send your responses in the chat:

**What climate projections do you think would be useful to include in the tool?**

**How can we better engage you & your communities in this CETA CIA discussion as we continue to develop and add to the map moving forward?**

## Department of Health Staff

Rad Cunningham | Senior  
Epidemiologist | he/him

[Rad.Cunningham@doh.wa.gov](mailto:Rad.Cunningham@doh.wa.gov)



Elise Rasmussen | Climate Equity  
Coordinator | she/her

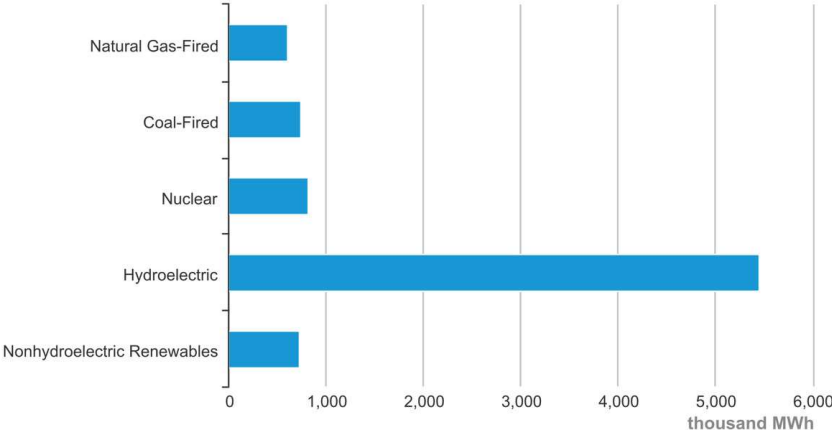
[Elise.rasmussen@doh.wa.gov](mailto:Elise.rasmussen@doh.wa.gov)



# What is CETA?

The Clean Energy Transformation Act was a governor's request legislation in 2019 requiring utilities in Washington to transition to 100% renewable energy with no offsets by 2045.

Washington Net Electricity Generation by Source, Dec. 2018



Source: Energy Information Administration, Electric Power Monthly

## CETA Milestones

- 2022 – Utilities provide clean energy transformation plans
- 2025 – Eliminate coal from their state portfolios
- 2030 – Must be GHG neutral (including offsets)
- 2045 – 100% renewable energy with no offsets

## CETA CIA Statute

By **December 31, 2020**, the DOH must develop a cumulative impact analysis (CIA) to **designate the communities highly impacted by fossil fuel pollution and climate change** in Washington.

## CETA CIA Statute

By **December 31, 2020**, the DOH must develop a cumulative impact analysis (CIA) to **designate the communities highly impacted** by **fossil fuel pollution** and **climate change** in Washington.

**CIA Goal:** highlight communities that are **currently experiencing** a **disproportionate** share of **environmental risk factors** and that must, according to CETA, **benefit equitably** in the transition to clean energy economy.





## CETA CIA Statute

By **December 31, 2021**, **Commerce and the Utilities and Transportation Commission** must **adopt rules** for establishing the requirements for incorporating the cumulative impact analysis into the criteria for developing clean energy action plans.

# UTC rules require customer engagement

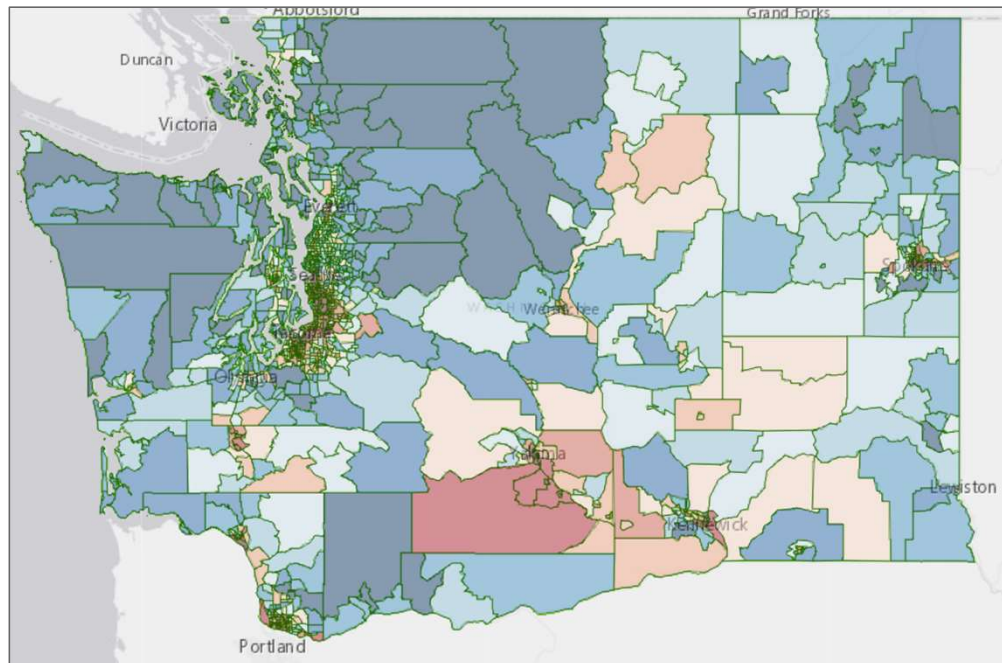
Privately owned electric utilities (*i.e.*, PSE, Pacific Power, Avista) must develop participation plans that discuss how they will engage with customers to develop customer benefit indicators (aka, customer preference), including:

Who?	Highly impacted communities and vulnerable populations		
Benefit:	Energy benefits	Non energy benefits ↓	Reduction of burdens ↓
		<ul style="list-style-type: none"> <li>- Jobs</li> <li>- Home comfort</li> <li>- Increased economic activity</li> </ul>	<ul style="list-style-type: none"> <li>- Health impacts</li> <li>- Power outages</li> <li>- Ecological diversity</li> </ul>

Who?	All Customers					
Benefit:	Public health	Environmental ↓	Cost reduction	Risk reduction	Energy security	Resiliency
		<ul style="list-style-type: none"> <li>- Water</li> <li>- Air</li> <li>- Wildlife impacts (bees, bats, birds, etc.)</li> </ul>				

# Washington Environmental Health Disparities Map

[doh.wa.gov/ibl](http://doh.wa.gov/ibl)

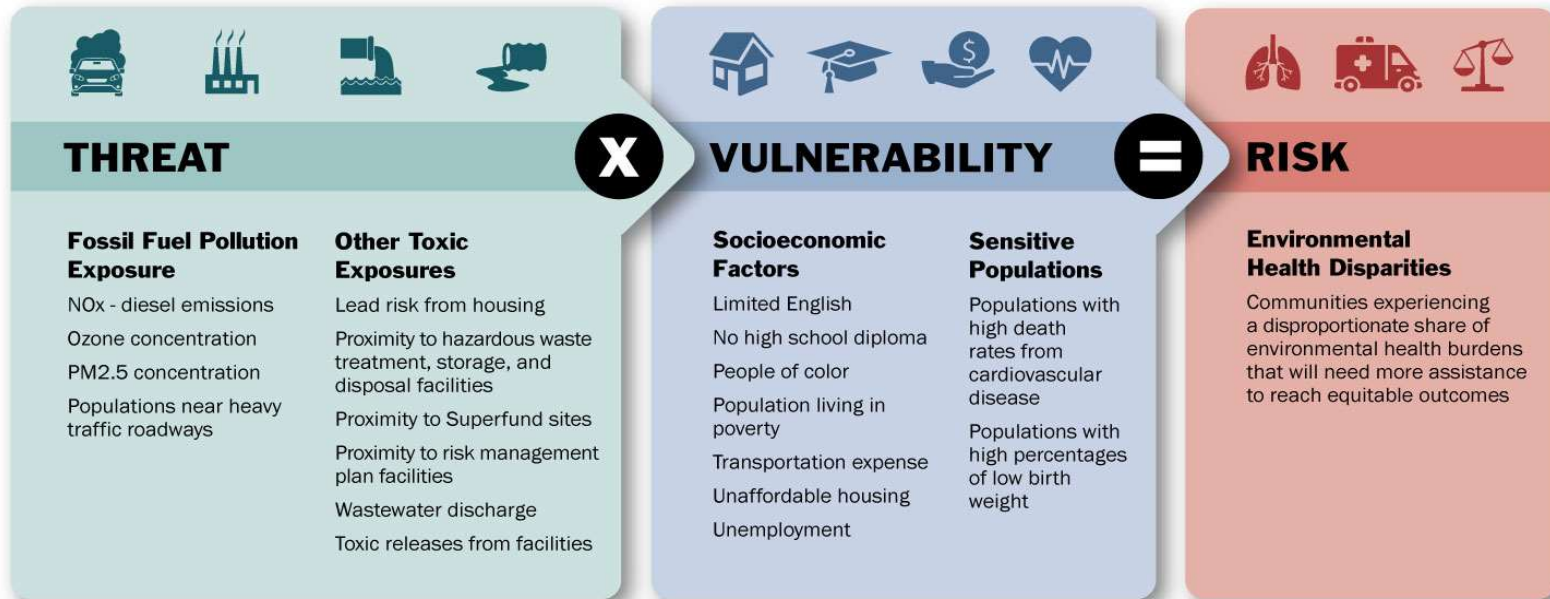




# Using Environmental Health Disparities Map for CETA CIA

Washington Environmental Health Disparities

## **Threat x Vulnerability = Risk**

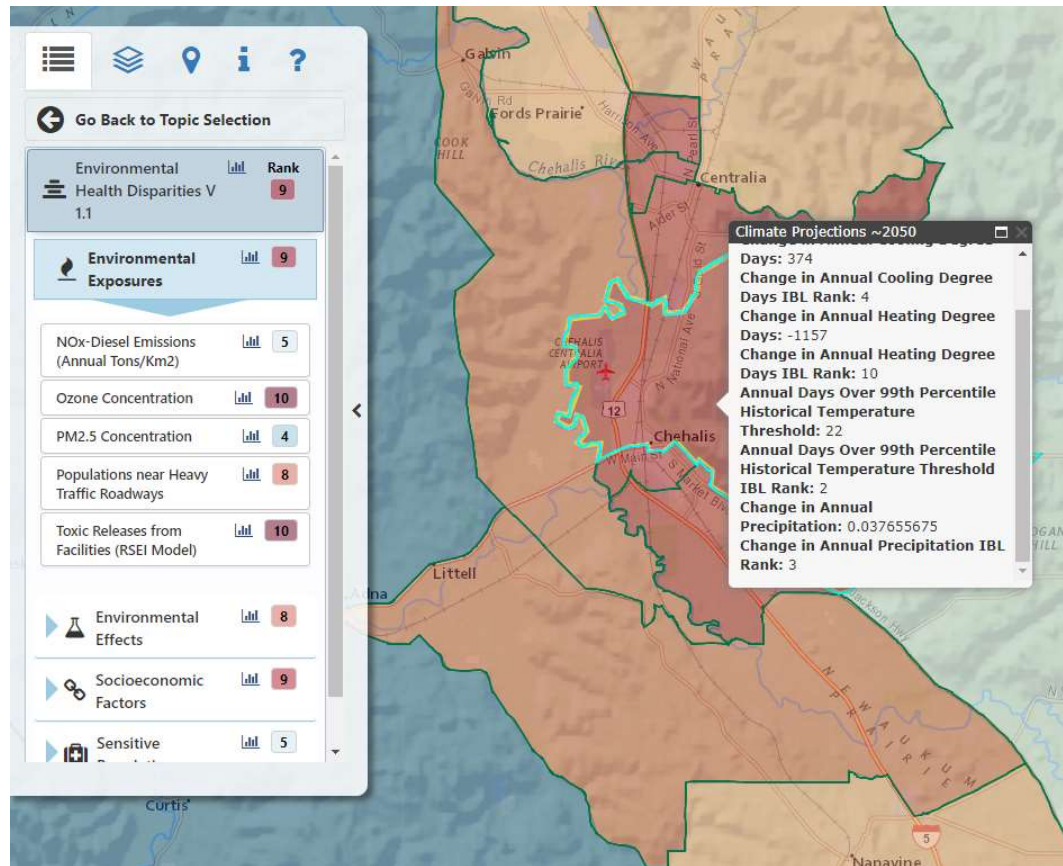


## Highly Impacted Communities

Designation criteria, census tracts that:

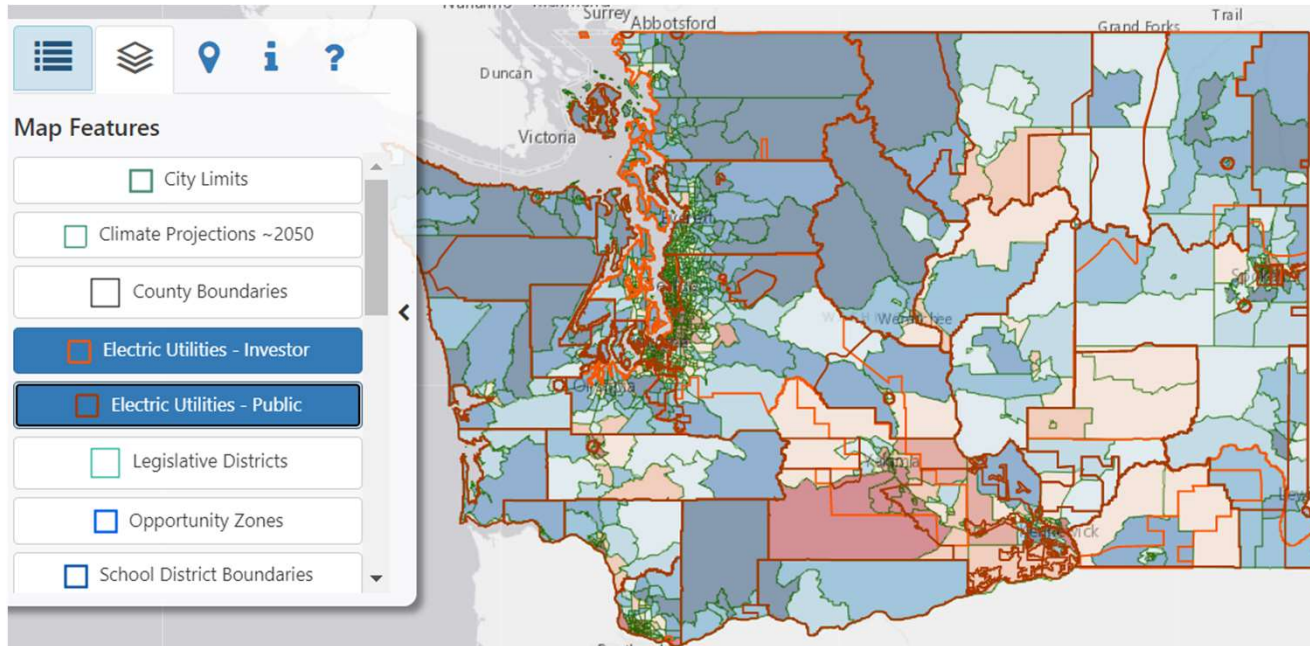
- Covered or partially covered by '**Indian Country**' as defined in and designated by RCW 19.405.020.
- **Ranked a 9 or 10 on the Environmental Health Disparities (EHD) Map**, as designated by the Department of Health.

# Very Quick Intro to EHD



# Highly Impacted Communities from EHD Map

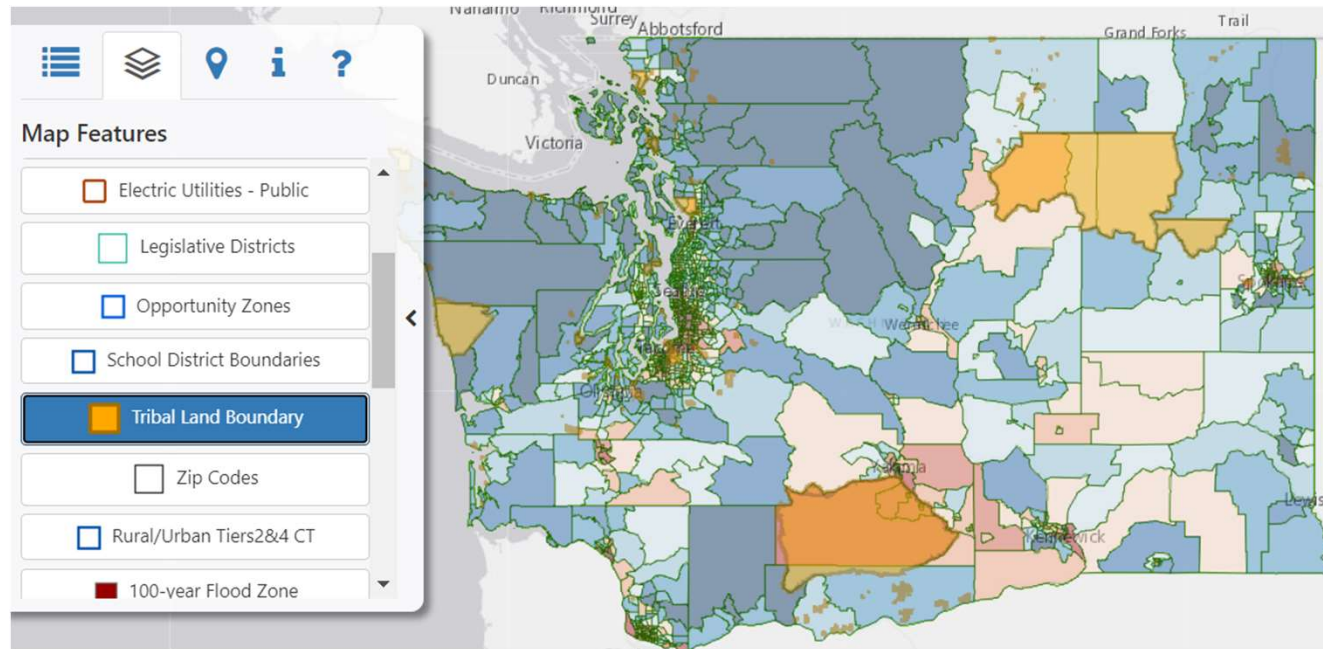
Public & private utility boundary layers:





# Highly Impacted Communities from EHD Map

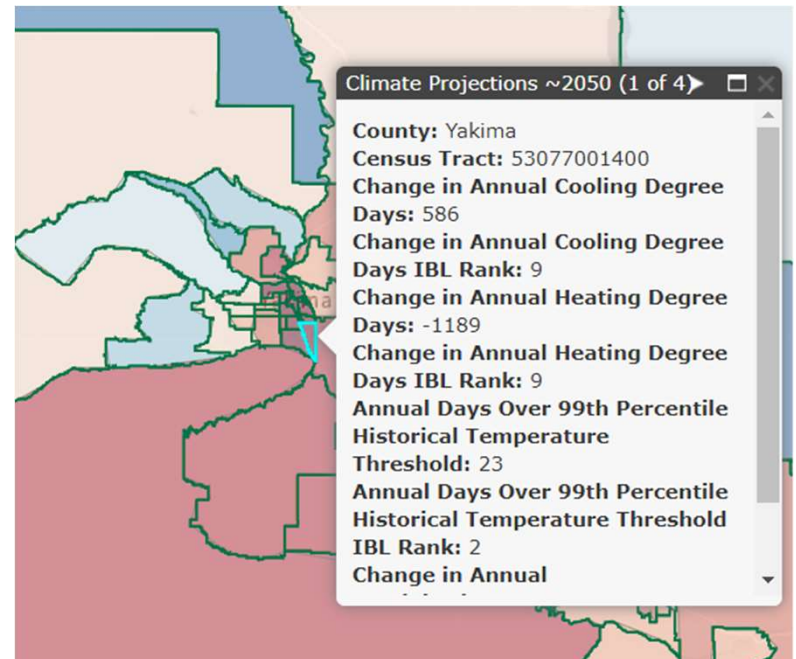
Tribal land boundary layer:



## Climate Projections added to Map Layer

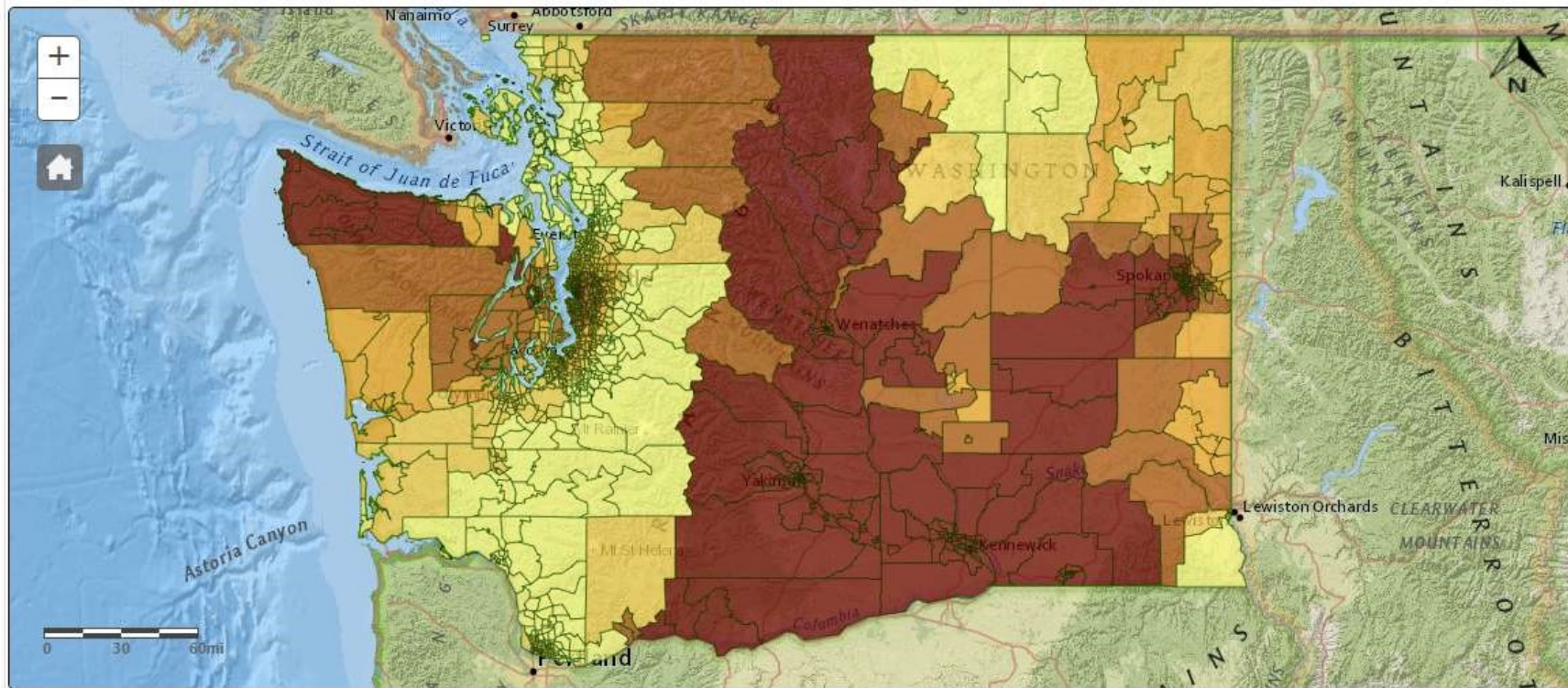
Climate change metrics:

- Practical to generate
- Serve as proxies for range of climate hazards

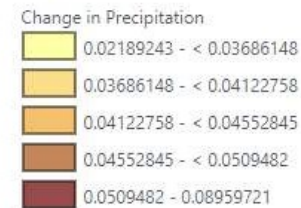


# Change in Annual Precipitation

Geography: Census Tract, Year: 2020



### Legend (Measure 1)



### Locate Address

Enter a County, Zip Code, or Address

Locate

Adjust Transparency



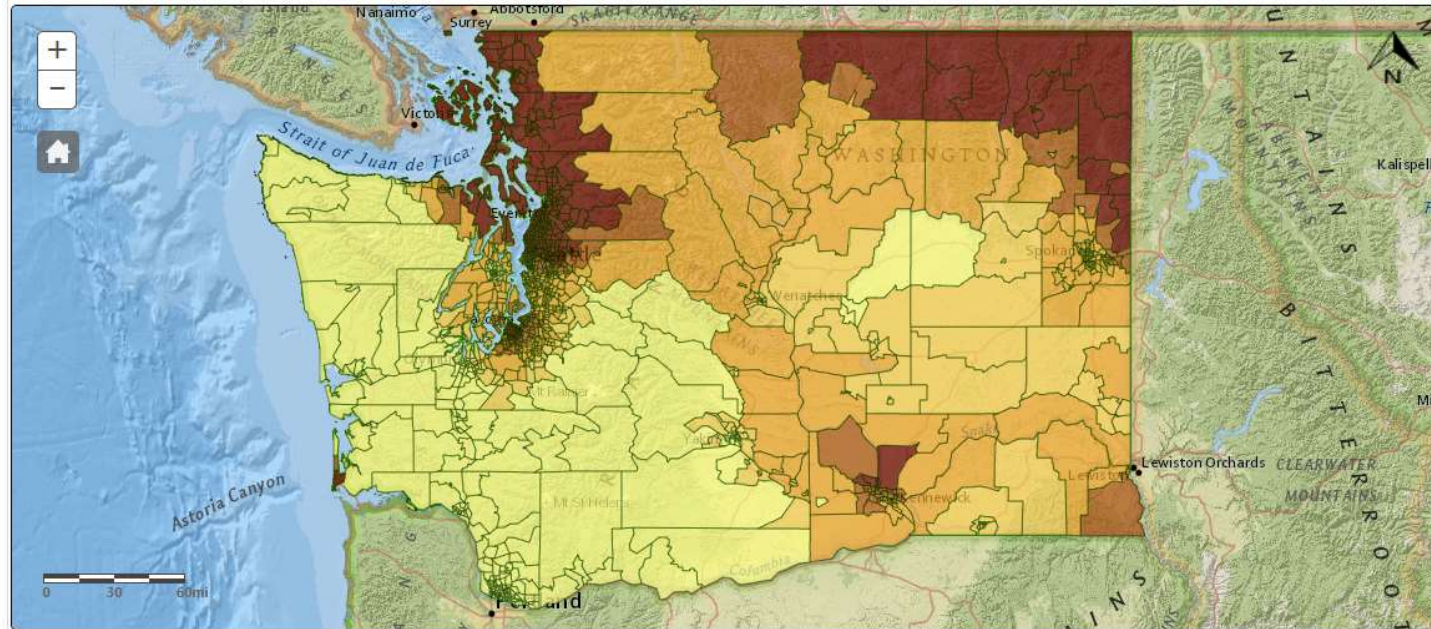
Select Layers to Display

Change in Annual Precipitation



### Annual Days Over 99th Percentile Historical Temperature Threshold

Geography: Census Tract, Year: 2020



**Legend (Measure 1)**

Days Over Threshold

- 18 - < 24
- 24 - < 26
- 26 - < 28
- 28 - < 29
- 29 - 42

**Locate Address**

Enter a County, Zip Code, or A

Locate

**Adjust Transparency**



**Select Layers to Display**

- Change in Annual Cooling Degree Days
- Change in Annual Heating Degree Days
- Days Over 99th Percentile Threshold

Created: 4/1/2021

## EHD Map for CETA CIA

EHD map chosen:

- Includes **fossil fuel pollution** indicators
- For most **climate hazards**, current population vulnerability is major driver of health impacts
- **Well-known vulnerability index** for environmental health disparities
- Used by other state agencies

# Partners



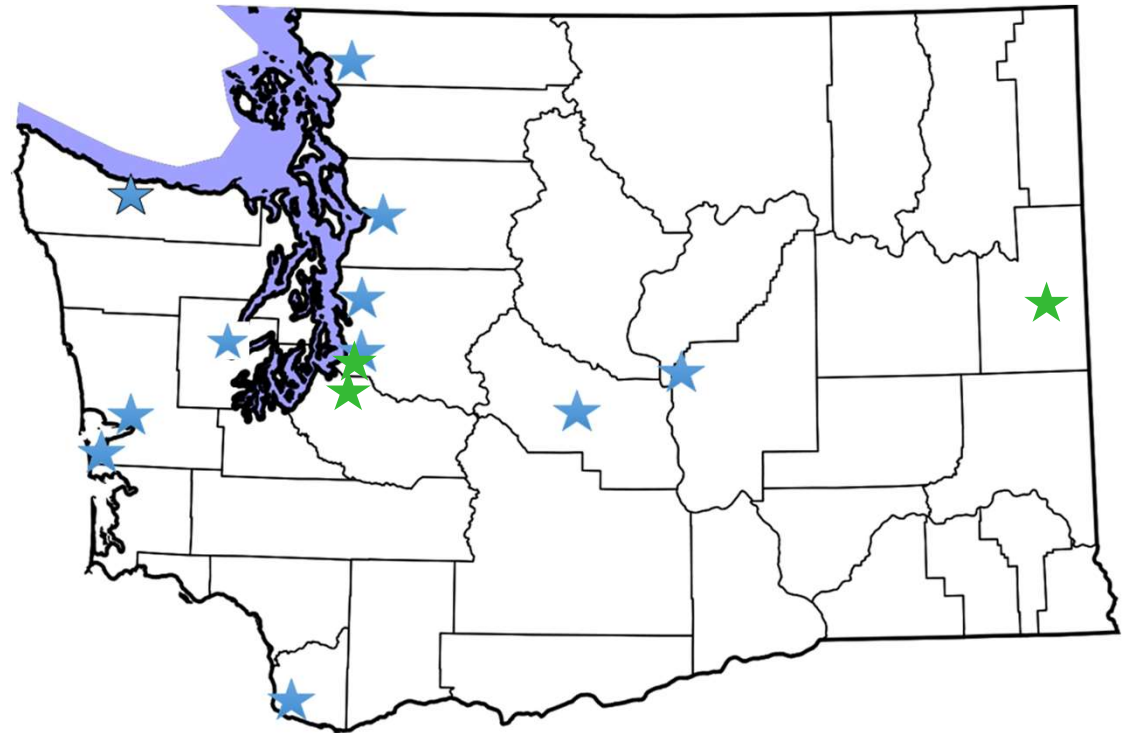
## Listening Sessions

- Led by Front & Centered
- Multi-cultural/lingual conversations about pollution, climate change, sensitivity, and resilience



# Listening Sessions & Community Conversations

- Communities of color
- Households with lower incomes
- Immigrants and refugees
- Linguistically isolated groups



★ 2017 Listening Sessions  
★ 2020 Community Conversations

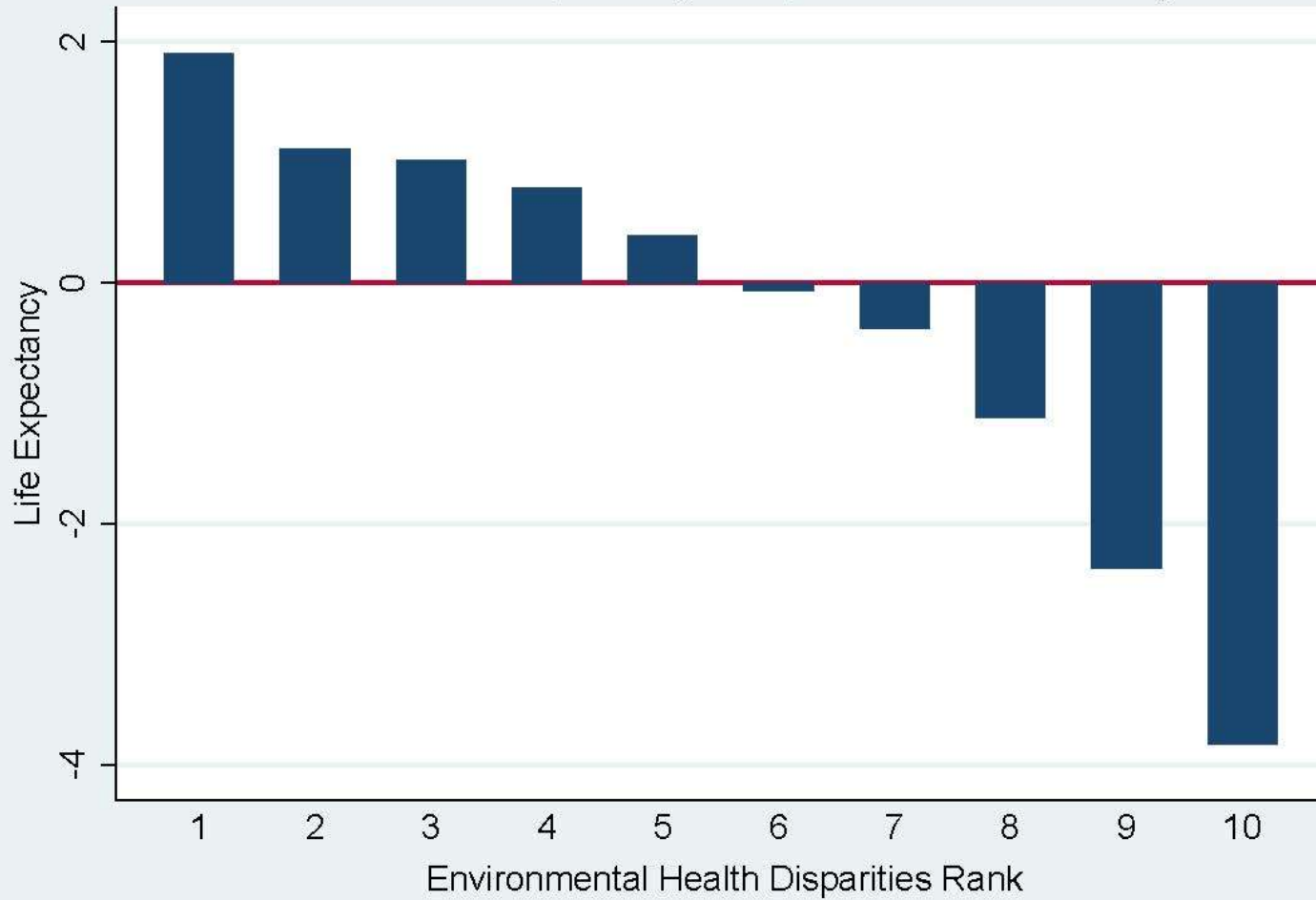


# Environmental Justice Task Force

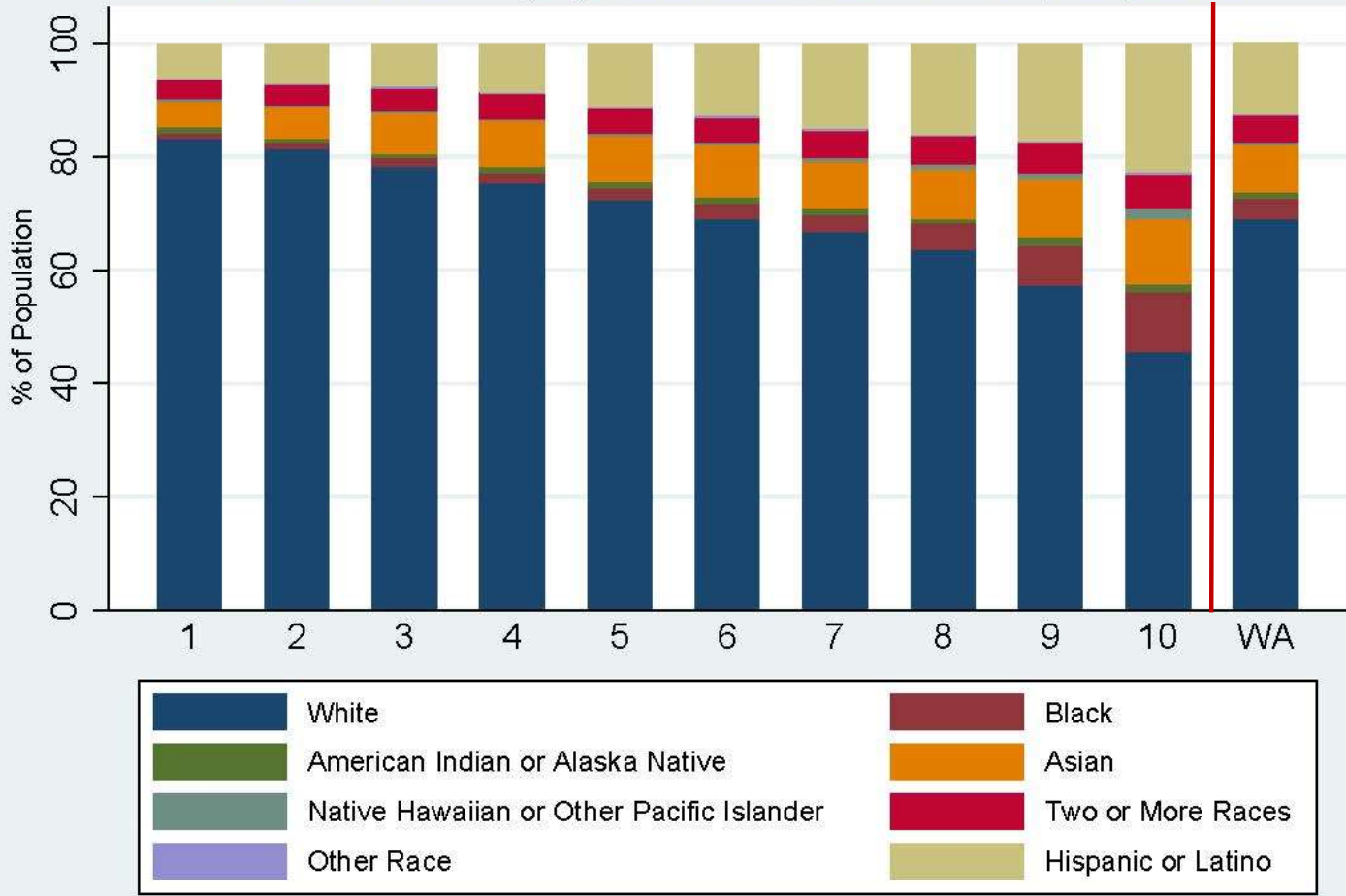
- 9 public meetings formatted for extensive community input
- 2 Subcommittees that met monthly from Dec. 2019 – Aug. 2020
- Mapping & Community Engagement Subcommittees members: state and local agencies, TF members, & trusted community reps
- 2 community listening sessions hosted by TF + 10 listening sessions hosted by Front & Centered
- Community Engagement Coordinator
- Outreach to other states, especially CA and OR



Difference in Life Expectancy Compared to the State Average



Race and Ethnicity by Environmental Health Disparity Rank



# Environmental Justice Task Force

Recommendations for Prioritizing EJ in Washington State Government

October 2020



## RECOMMENDATION

- That state agencies use the EHD data and map in agency activities...
  - **Build** demographic & environmental context...
  - **Conduct** EJ review & analysis routinely...
  - **Center** EJ as the priority intended outcome in resource allocation...
  - **Evaluate** and measure reductions in disparities...

## Next Steps

1. Continue to work on adding climate projection data.
2. Send any feedback to [DOH.WTN@doh.wa.gov](mailto:DOH.WTN@doh.wa.gov).
3. Updating EHD map. Next update planned at end of the year.

## Questions for You

Send your responses in the chat:

**What climate projections do you think would be useful to include in the tool?**

**How can we better engage you & your communities in this CETA CIA discussion as we continue to develop and add to the map moving forward?**

# Puget Sound Energy Staff

Brian Tyson | Manager of Clean  
Energy Planning and  
Implementation | he/him  
[Brian.Tyson@pse.com](mailto:Brian.Tyson@pse.com)



---

# Department of Health Cumulative Impact Analysis and PSE Clean Energy Implementation Plan

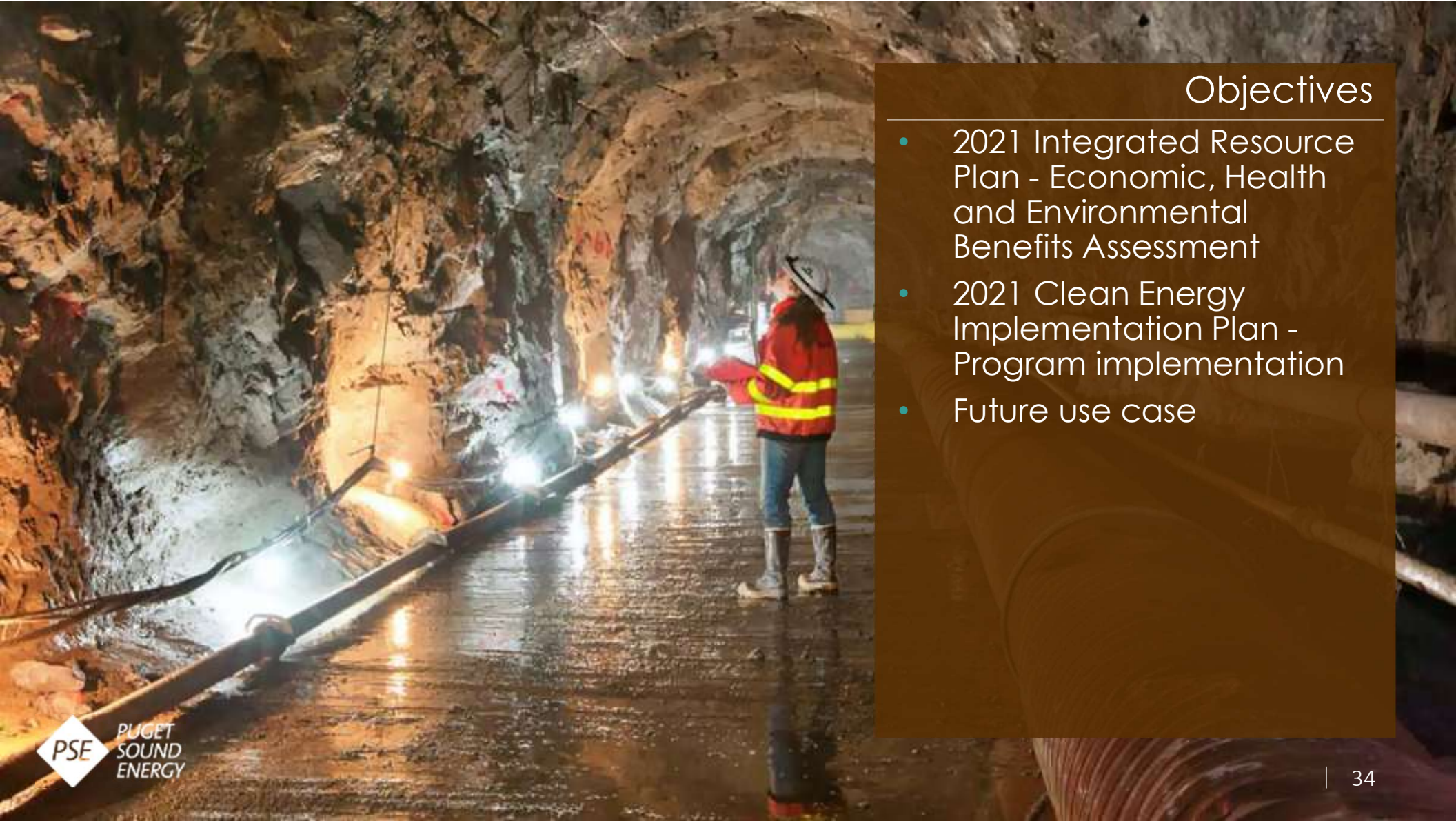
May 6, 2021

---



Brian Tyson, Manager of Clean Energy Planning and Implementation, PSE





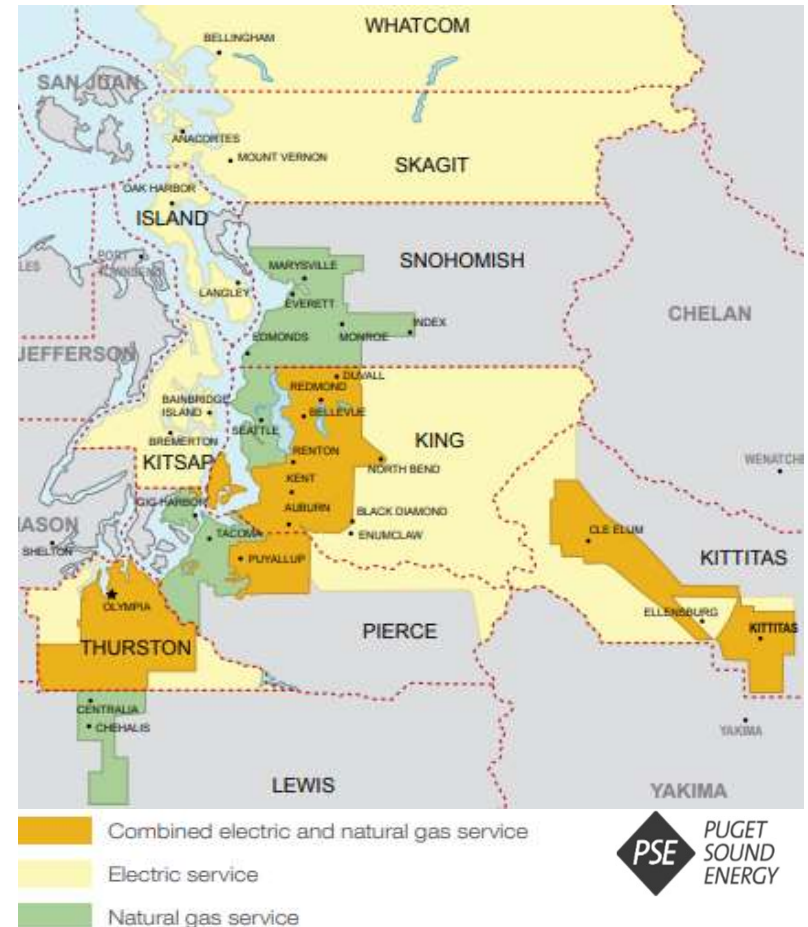
## Objectives

- 2021 Integrated Resource Plan - Economic, Health and Environmental Benefits Assessment
- 2021 Clean Energy Implementation Plan - Program implementation
- Future use case

# About PSE

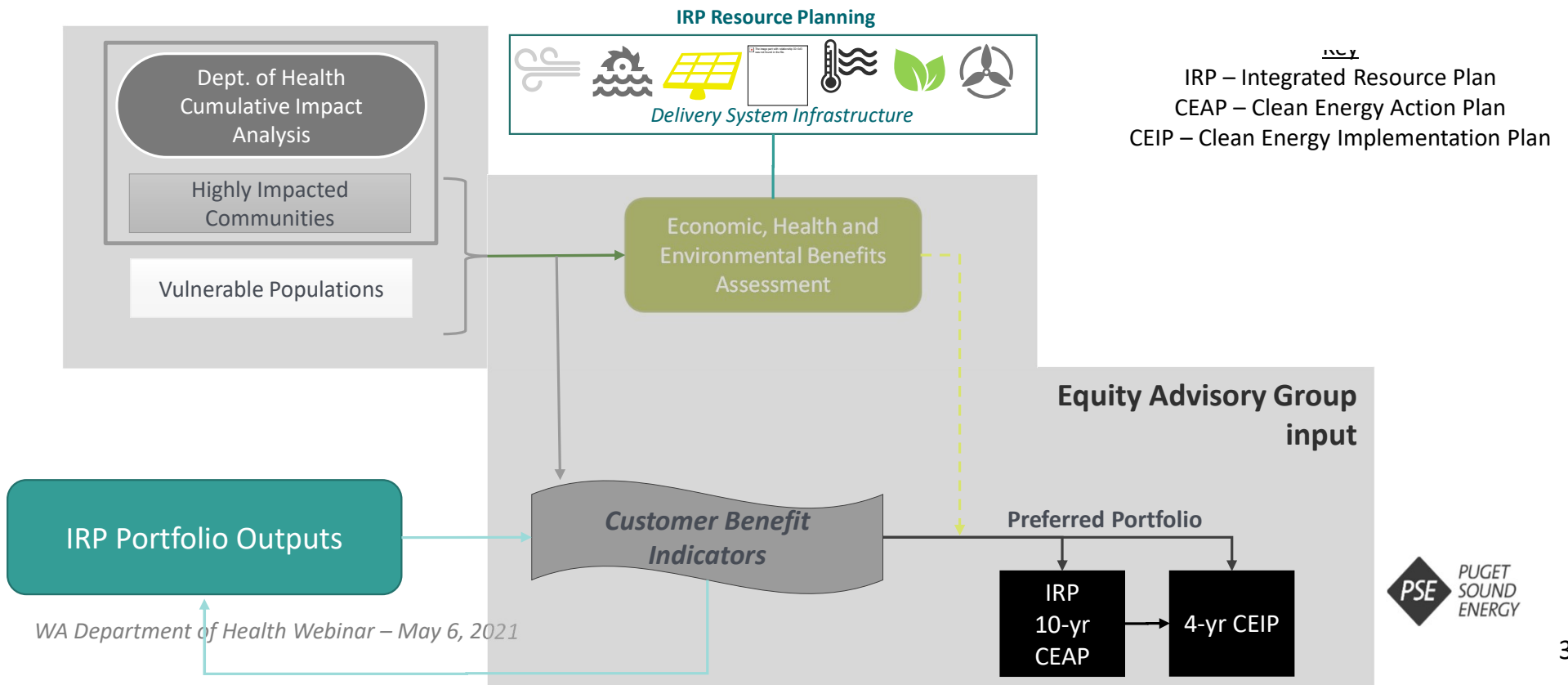
- Washington's largest utility, serving 1.5 million customers
- Headquartered in Bellevue, with service area covering 6,000 square miles
- Our 3,100+ employees live and work in the communities we serve
- Investor-owned utility regulated by Washington Utilities and Transportation Commission (UTC)
- We've set an aspirational goal to be a Beyond Net Zero company by 2045

WA Department of Health Webinar – May 6, 2021



# PSE Resource Planning

*Assessment of current conditions in the path to equitable transition to clean energy is evaluated through Economic, Health and Environmental Benefits Assessment.*



# Assessment Overview

---

## **WAC 480-100-620 (9) Economic, health, and environmental burdens and benefits.**

The IRP must include an assessment of energy and non-energy benefits and reductions of burdens to vulnerable populations and highly impacted communities; long-term and short-term public health and environmental benefits, costs, and risks; and energy security risk.

The assessment should be informed by the cumulative impact analysis conducted by the department of health.

## Assessment

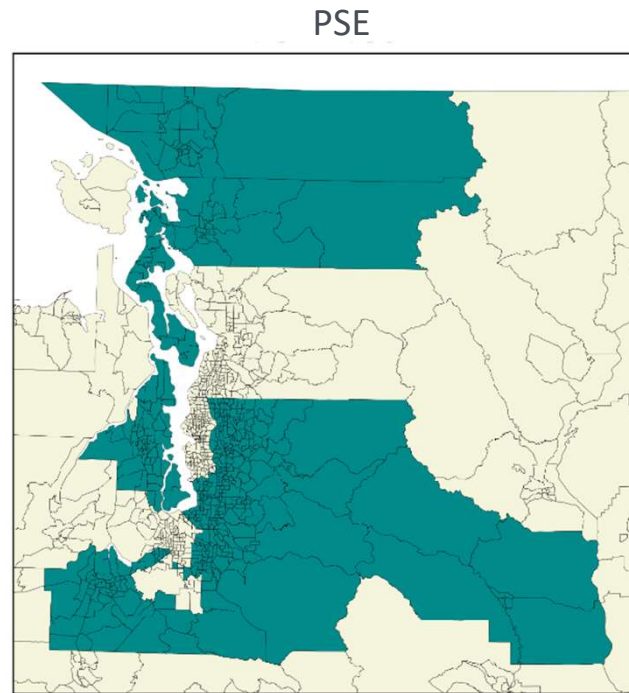
**Define named communities:**  
Highly Impacted Communities  
Vulnerable Populations

**Measure disparities across  
Assessment Metrics**

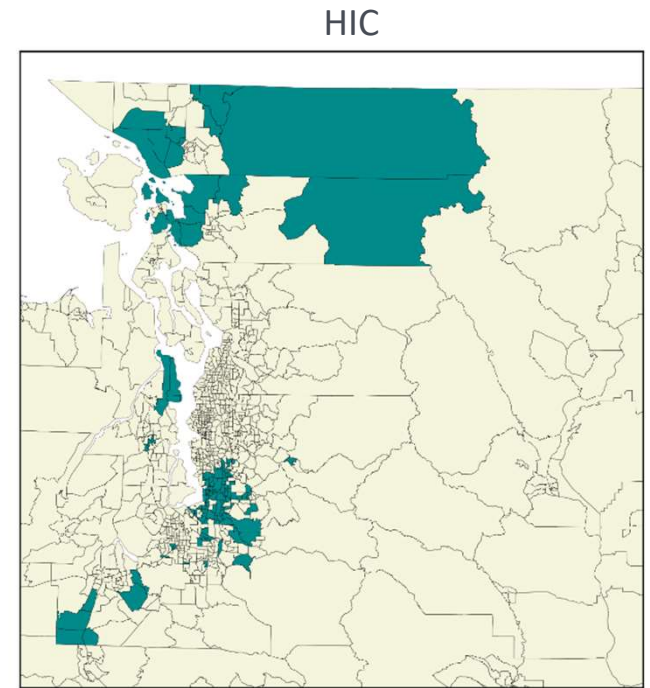


# PSE Designated Highly Impacted Communities (HIC)

- Used in 2021 IRP to identify named communities
- Census tracts across PSE's territory, layers in named communities
- Identify disparities with PSE's territory



489 Census Tracts

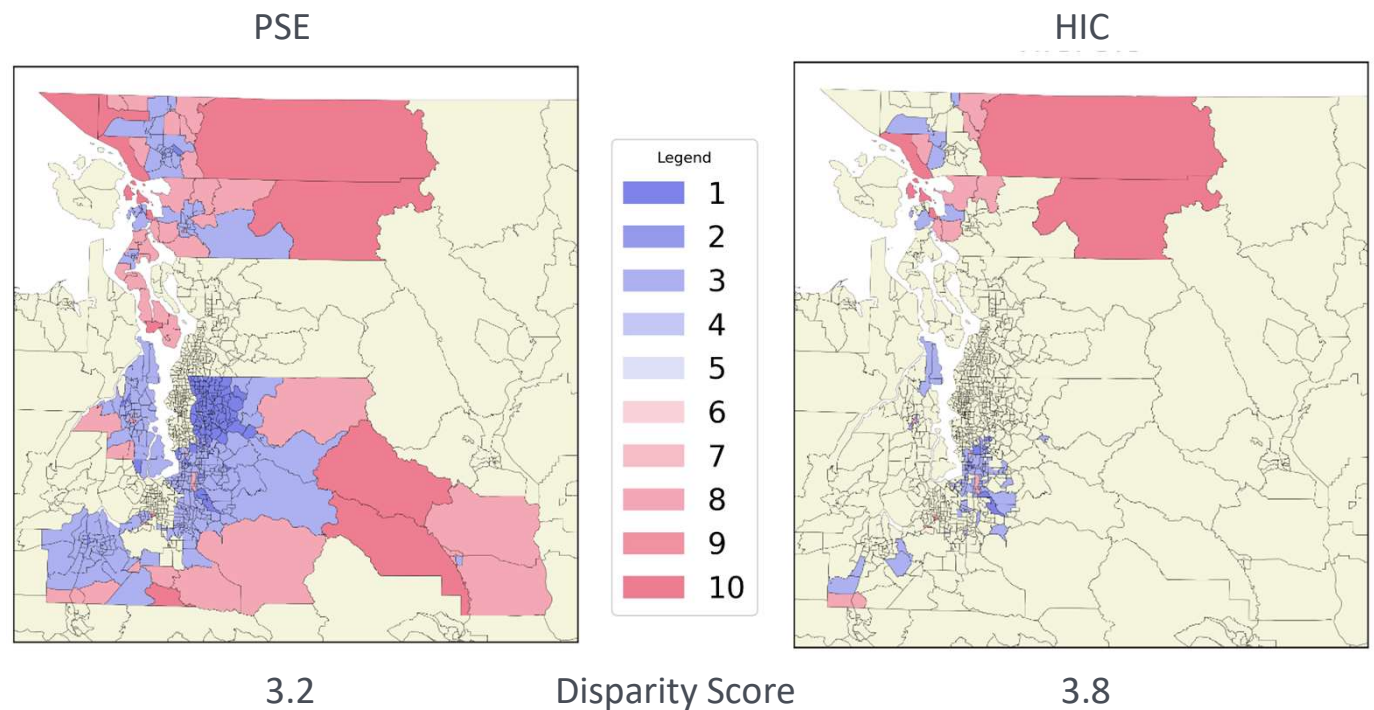


123 Census Tracts

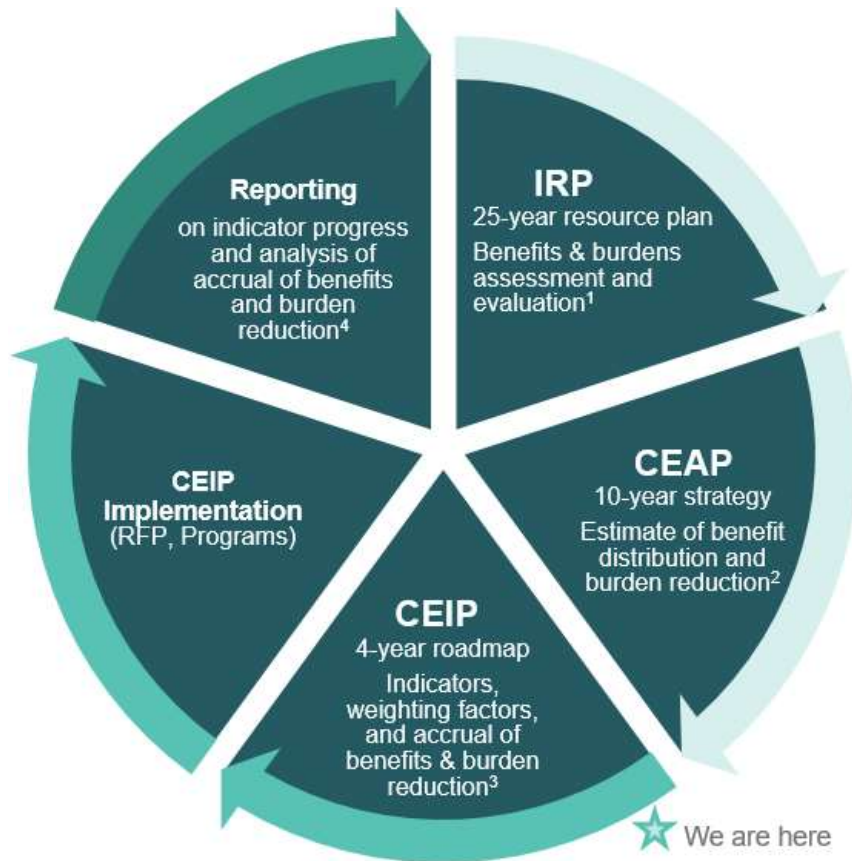


# Energy Burden for all income levels

- Snapshot of current conditions in PSE's service territory
- Disparity score shows comparison between PSE customer and highly impacted communities
- Energy burden as a percent of income spent on residential housing energy



# IRP, CEAP and CEIP lifecycle



- Continuous focus on:
  - Clean energy standards
  - Equitable distribution of benefits and burden reduction
- IRP and CEAP set a baseline carried through by CEIP
- Progress made with CEIP feeds next IRP

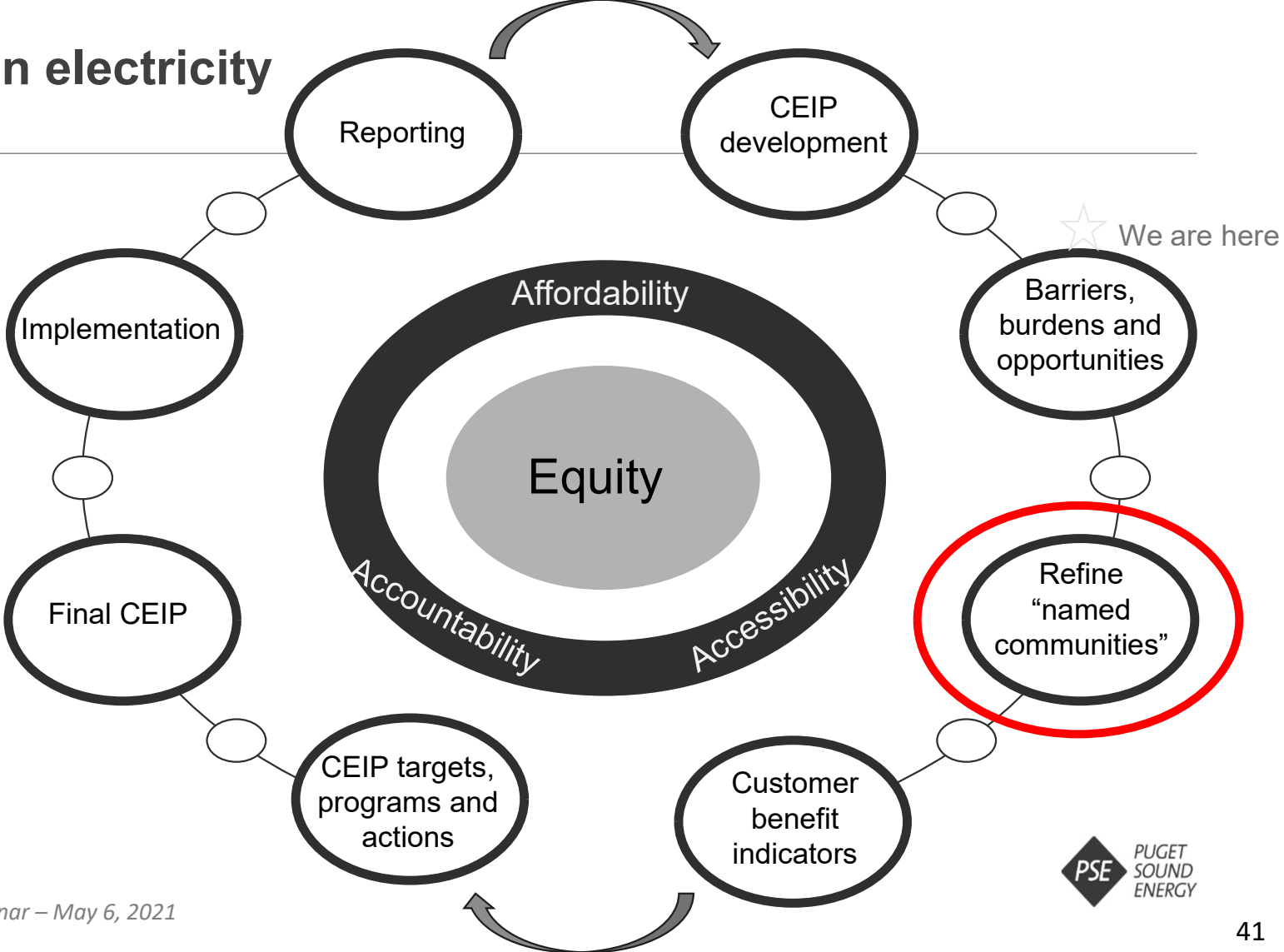
<sup>1</sup> IRP assessment and evaluation: WAC 480-100-620(9) and (11)(g)

<sup>2</sup> CEAP estimates: WAC 480-100-620(12)(c)(ii)

<sup>3</sup> CEIP indicators and weighting factors: WAC 480-100-640(4) and (5)(a)

<sup>4</sup> Reporting on indicator progress: WAC 480-100-650(1)(d)

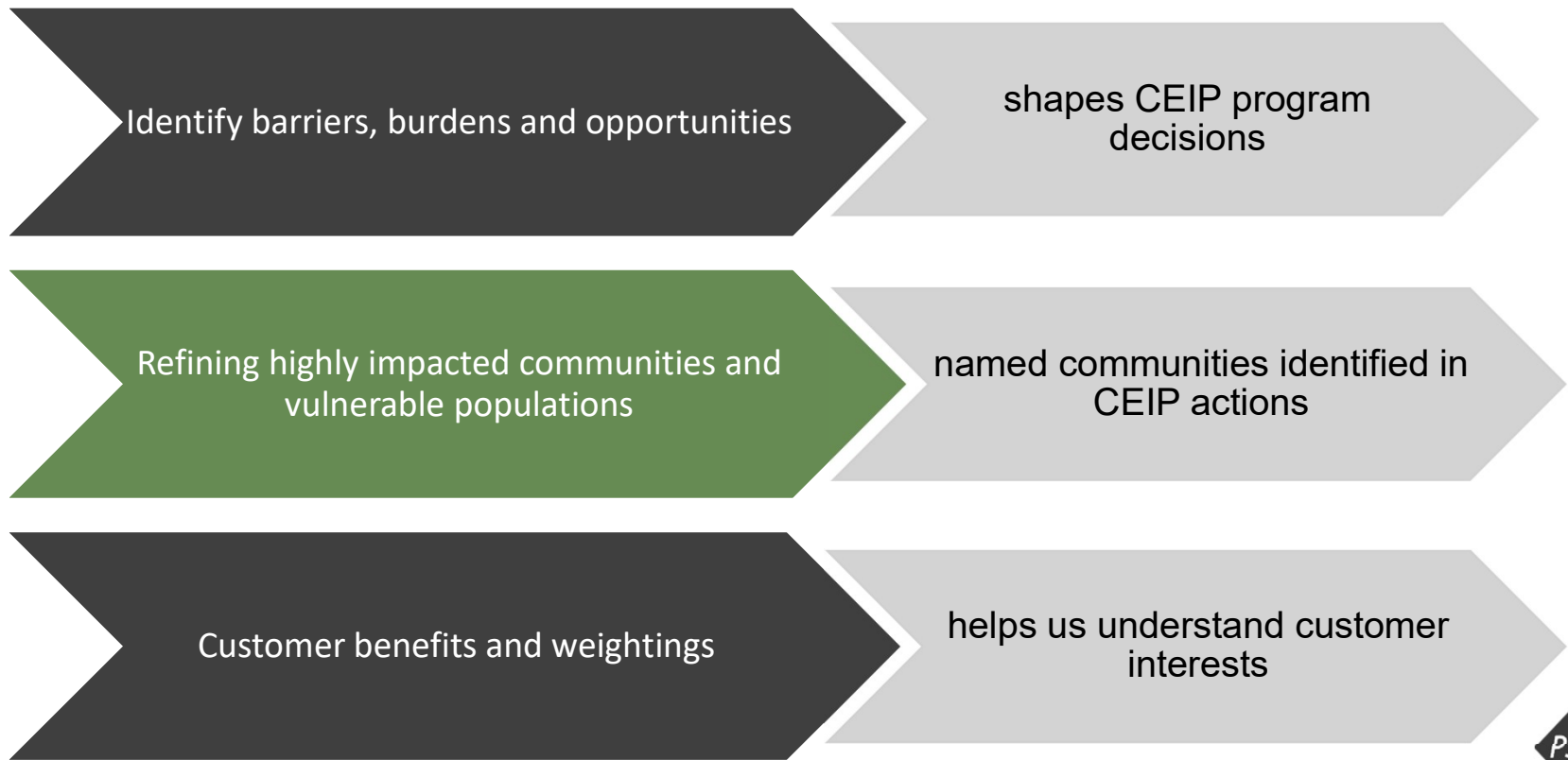
# Equity in our clean electricity transformation





# Embedding equity into the CEIP with Equity Advisory Group

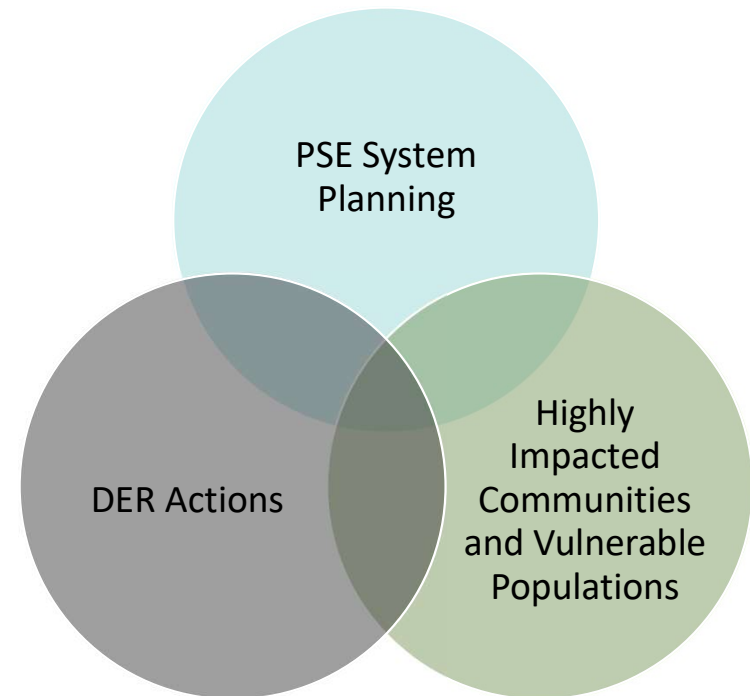
---



## Future use cases

---

- Identifying overlaps between electric system planning and highly impacted communities
- Potential use to develop DER's in highly impacted communities
- Continued engagement with customers through implementation process



## PSE Next Steps

---

- Continued coordination on named communities
- Develop in-house database for additional PSE programs
- CEIP Implementation
- Economic, Health and Environmental Assessment in future IRP

 Stay in touch



[ceip@pse.com](mailto:ceip@pse.com)



[cleanenergyplan.pse.com](http://cleanenergyplan.pse.com)

Questions for us?



To request this document in another format, call 1-800-525-0127. Deaf or hard of hearing customers, please call 711 (Washington Relay) or email [civil.rights@doh.wa.gov](mailto:civil.rights@doh.wa.gov).

DOH 333-274 May 2021