



Vaccine Implementation
Collaborative
December 1st, 2021

Thank you!

ASL Interpreters

Captioners

Spanish Interpreter

**QUESTIONS
?**

**Please message Keri Nguyen
If you have any questions!**

ASL Interpreters

We will “Spotlight” them, along with the presenter

**QUESTIONS
?**

**Please message Keri Nguyen
If you have any questions!**

Captioners - How to display and customize captions/subtitles and view the full transcript

1. To view live captions, click on the menu arrow next to the Closed Caption button.
2. Choose from showing subtitles, a full transcript, or both.
3. You may adjust the size of the captions if you wish.
4. You can also Hide Subtitles if you do not want to see the text.

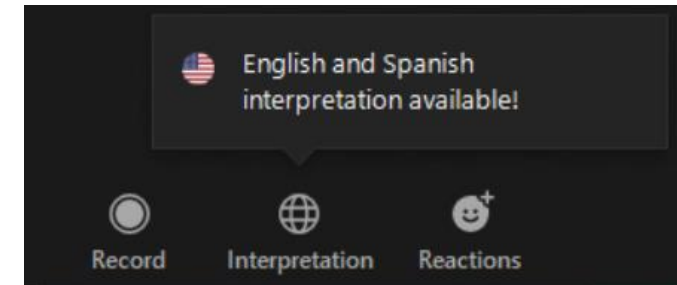
**QUESTIONS
?**

**Please message Keri Nguyen
If you have any questions!**

Spanish Interpreter

Para obtener acceso a la interpretación en español en Zoom: Haga clic en el icono de "Interpretation" en la barra de herramientas. Luego, haga clic en Spanish (español). Esto le conectará a la interpretación en español.

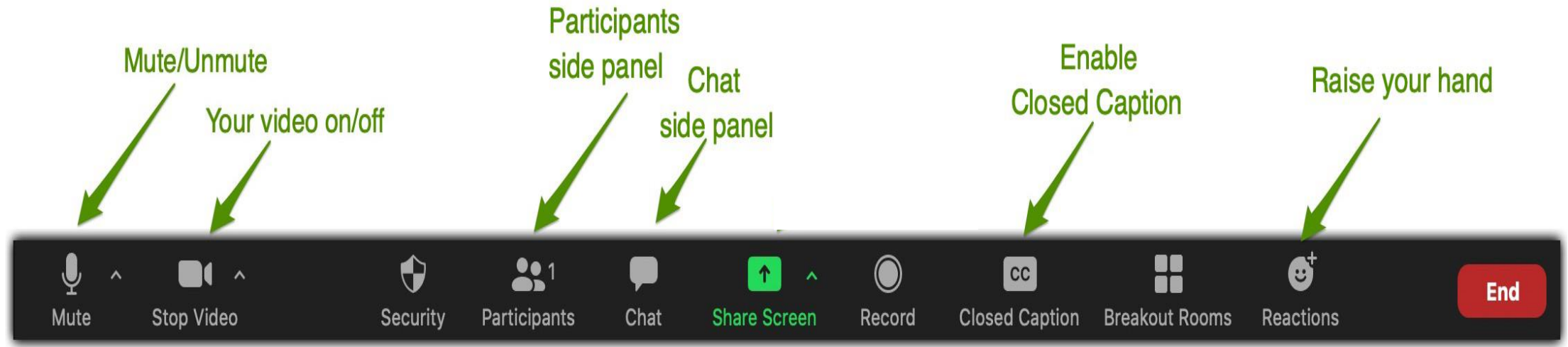
For Spanish to English translation, click on the "Interpretation" button and press the English room.



**QUESTIONS
?**

**Please message Keri Nguyen
If you have any questions!**

Zoom Navigation and Accessibility



Collaborative Support Team



Julie Grauert
Public Information
Officer



Cassidy Farrow
Technical Support



Keri Nguyen
Language Support

Media inquiries:
Julie.Grauert@doh.wa.gov

Need Assistance:
KeriN@withinreachwa.org
CassidyF@withinreachwa.org

Land Acknowledgment

Welcome to the Washington State Department of Health. We start today with a land acknowledgement. We are meeting virtually from all over, but our physical offices are located in Tumwater, on the traditional territories of the Coast Salish people, specifically the Nisqually and Squaxin Island peoples. Tumwater and the South Puget Sound region are covered by the Treaty of Medicine Creek, signed under duress in 1854. The employees of the State of Washington are guided by the **Centennial Accord and chapter 43.376 RCW** – respecting and affirming tribal sovereignty and working with our tribal governments throughout the state in government-to-government partnership.

<https://native-land.ca/>

Today's Agenda

- Welcome
- Partner Spotlight
 - WA West African Center
- Community Relational Briefing & Conversation
- Community Conversation
 - Small group discussions
- Closing Remarks

WA West African Center

Pa Ousman Joof; Executive Director
Ousman Jarju; Executive Assistant

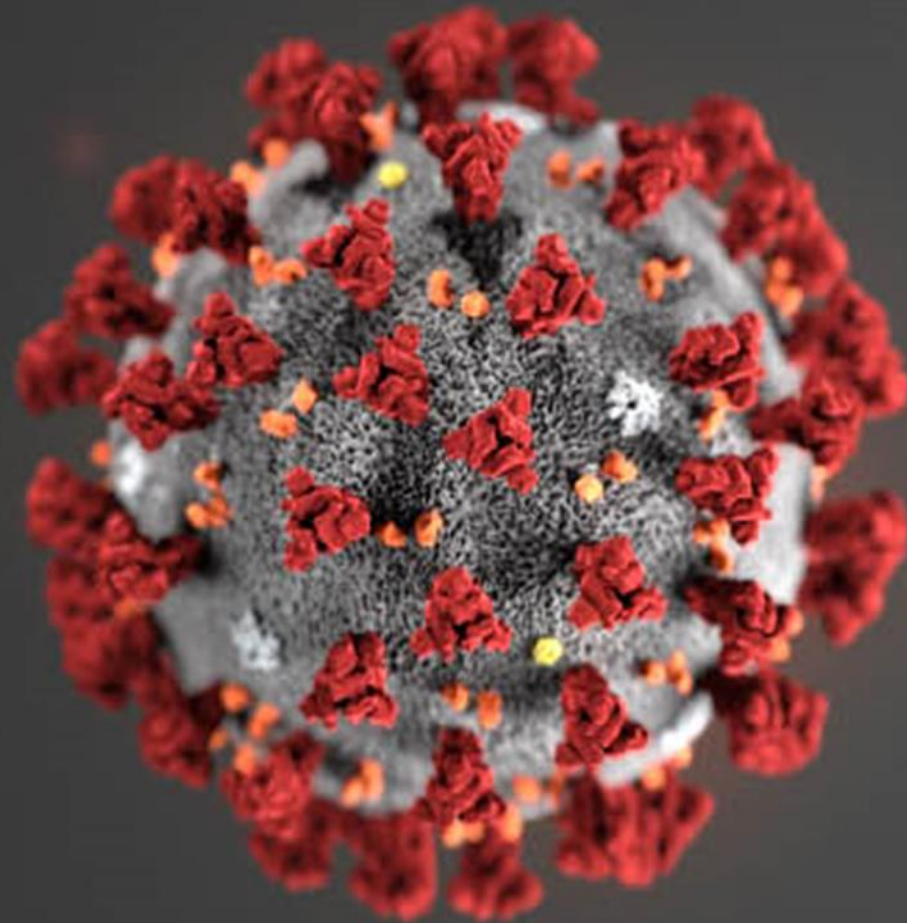




COVID-19 Vaccine Updates

Kathy Bay; Clinical, Quality and School Section Manager
SheAnne Allen; COVID-19 Vaccine Director





COVID Vaccine Updates

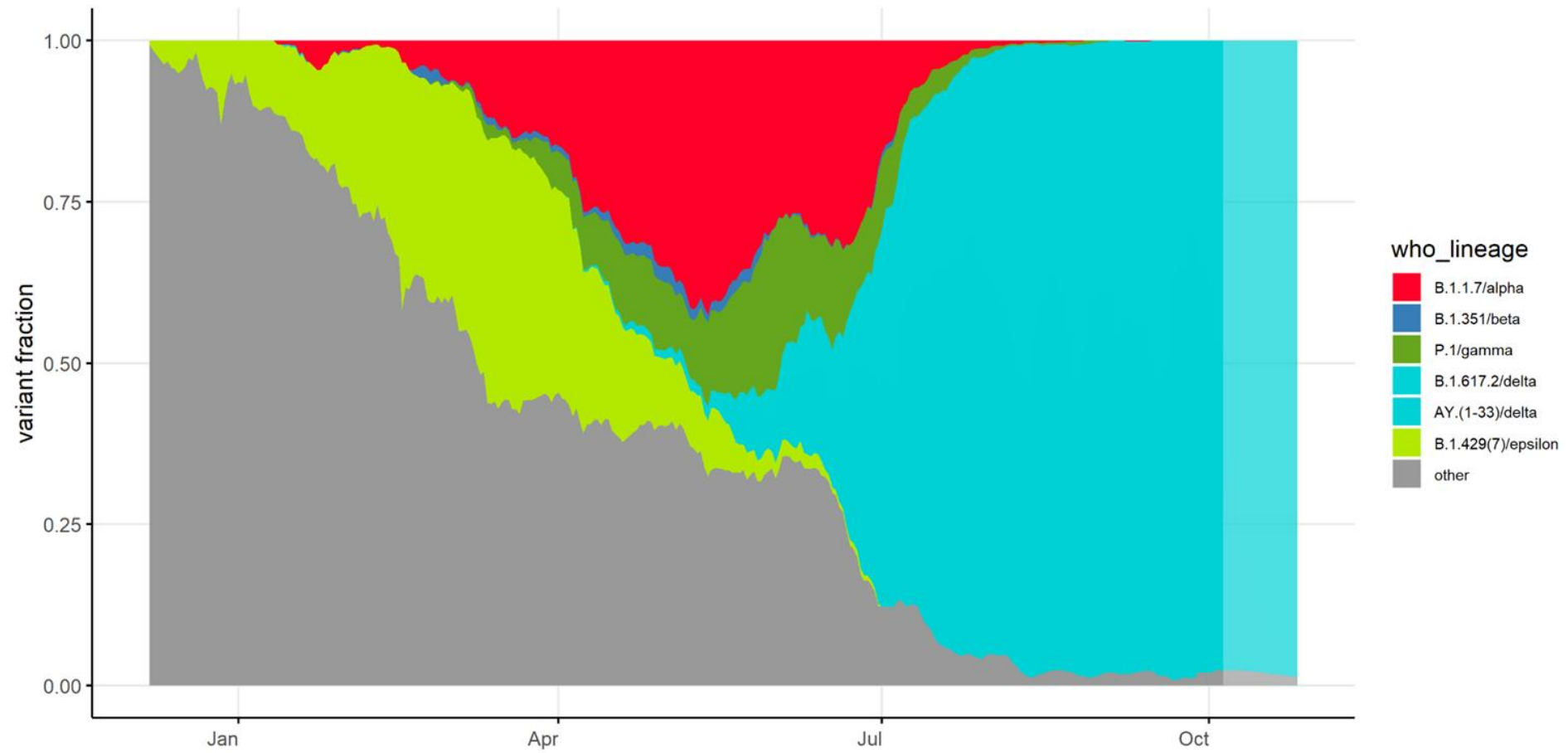
December 1, 2021

Health

*Where Equity,
Innovation, and
Engagement meet.*



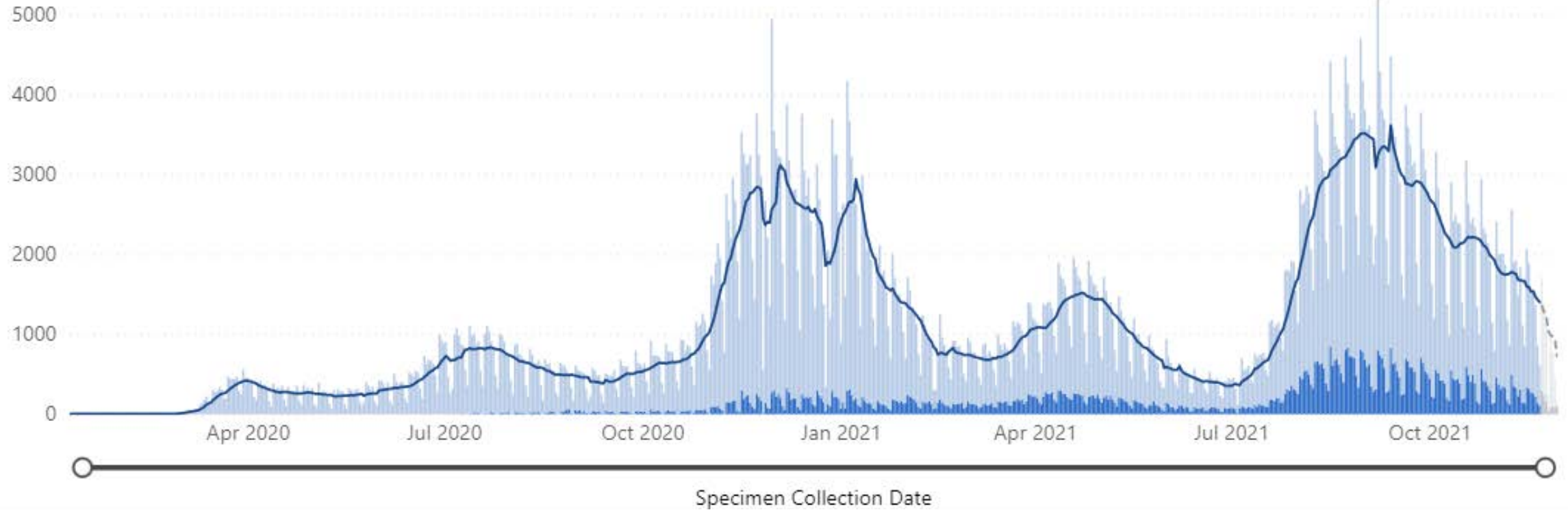
Proportion of COVID-19 cases attributable to variants



Case Counts

CASE COUNTS

● Probable Cases ● Confirmed Cases ● Incomplete (Probable Cases) ● Incomplete (Confirmed Cases) — Total Cases (7 day avg.) - - - Incomplete (7 day avg.)



Distribution By the Numbers

for the week starting November 29, 2021



51 Weeks of distribution



572 M Total doses delivered



454 M Total doses administered and reported



82.2% of US Adults (18+) have received at least 1 dose (n = 212.3 M)



99.9% of US Adults (65+) have received at least 1 dose (n = 54 M)



25.5 M At least 1 dose to adolescents 12–17 y/o



37.5 M Additional doses administered



6.4% Percentage of doses reported as wastage

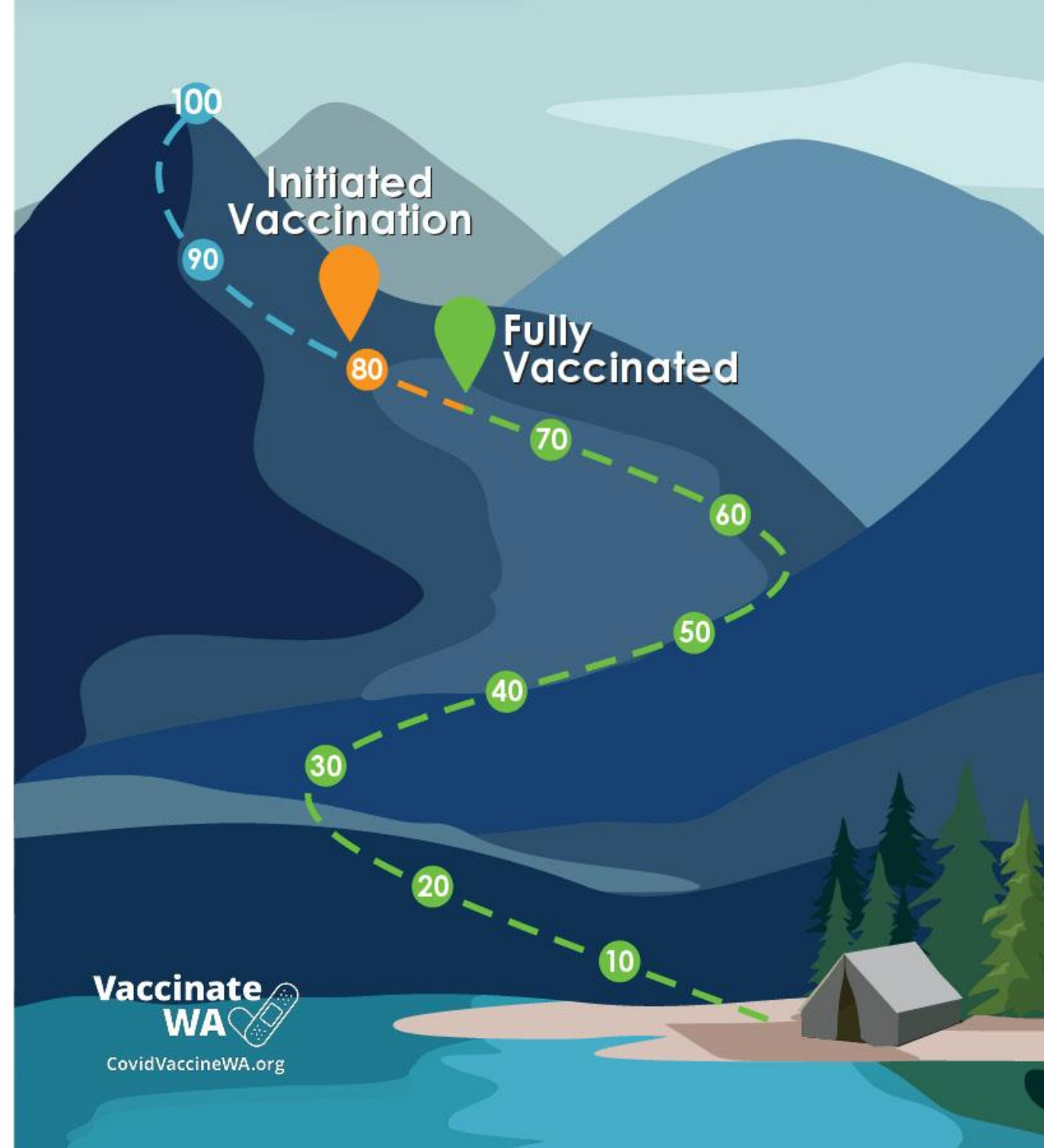


196.2 M Americans are fully vaccinated

**Countdown to 1 Year Anniversary:
15 Days**

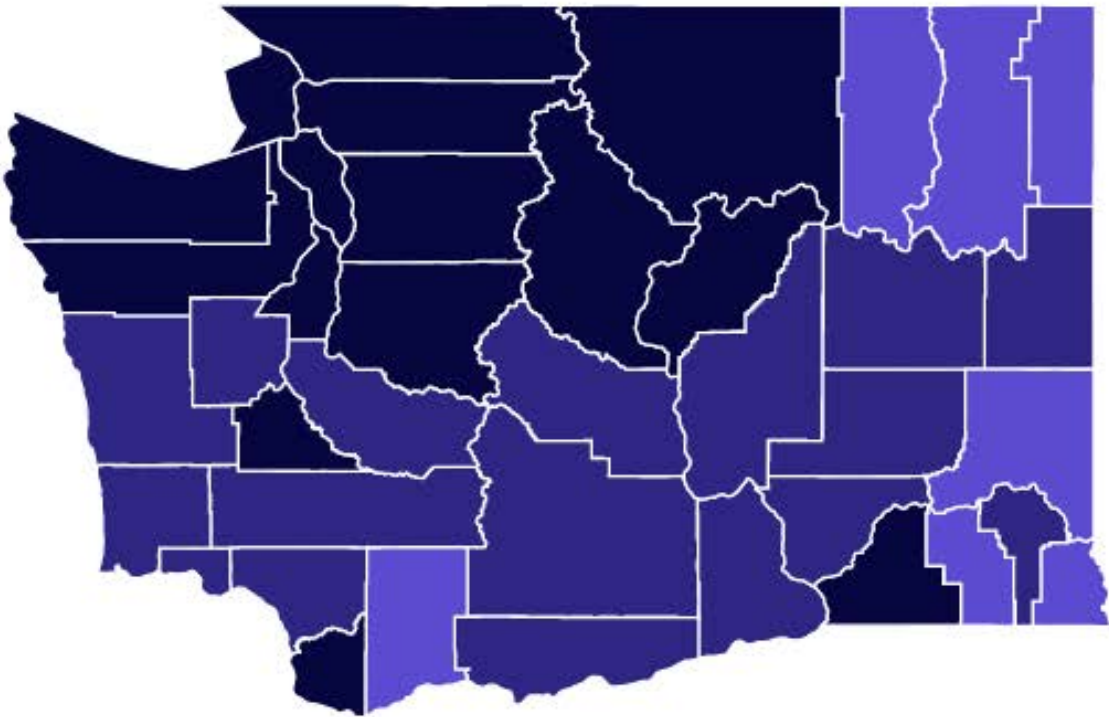
As of November 29,
80.8%*
of the population
12 and up has
received at least one dose
and
74.6%*
is **fully vaccinated.**

*This percent includes aggregate data from the Department of Defense and Department of Veterans Affairs and is higher than the DOH data dashboard.



Vaccination Rates Not Uniform Across the State

TOTAL POPULATION INITIATING VACCINATION (RECEIVING AT LEAST 1 DOSE)



Legend



Percent of Total
Population Initiating
Vaccination **66.7%**

Percent of Total
Population Fully
Vaccinated **61.6%**

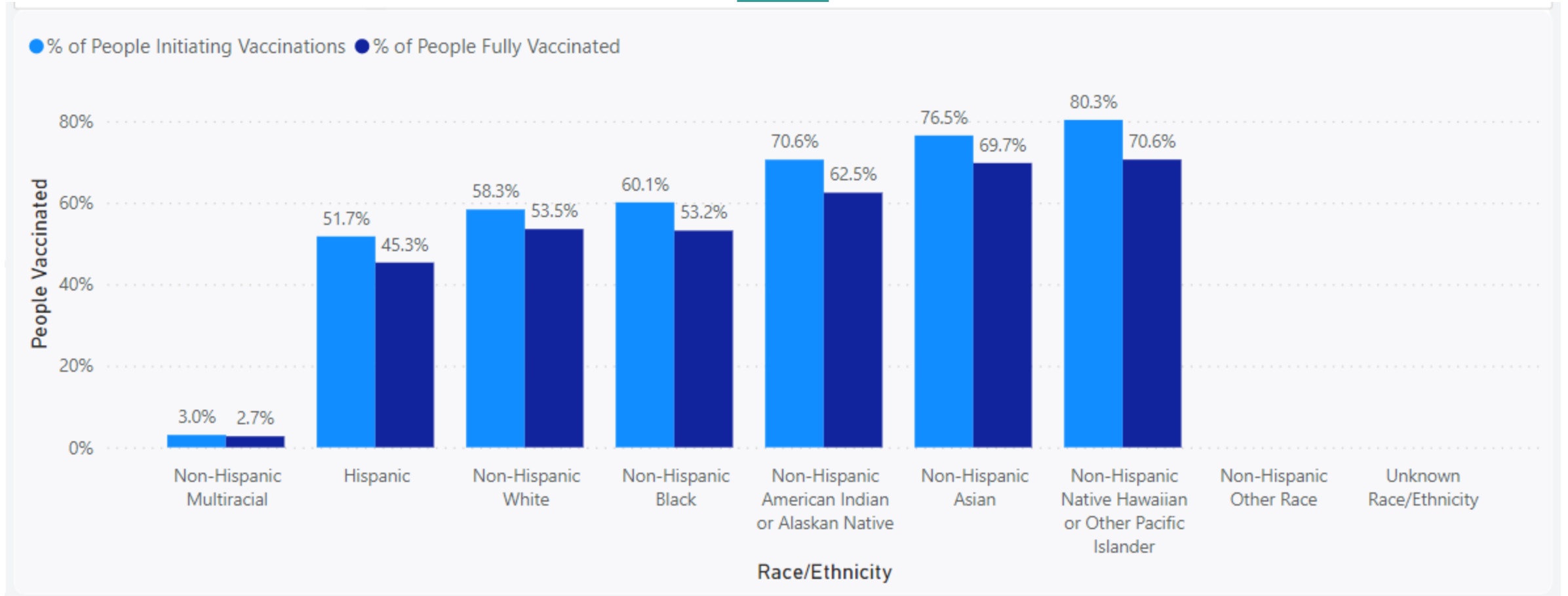
Percent of Population
Initiating Vaccination
(16+) **79.6%**

Percent of Population
Fully Vaccinated (16+) **73.6%**

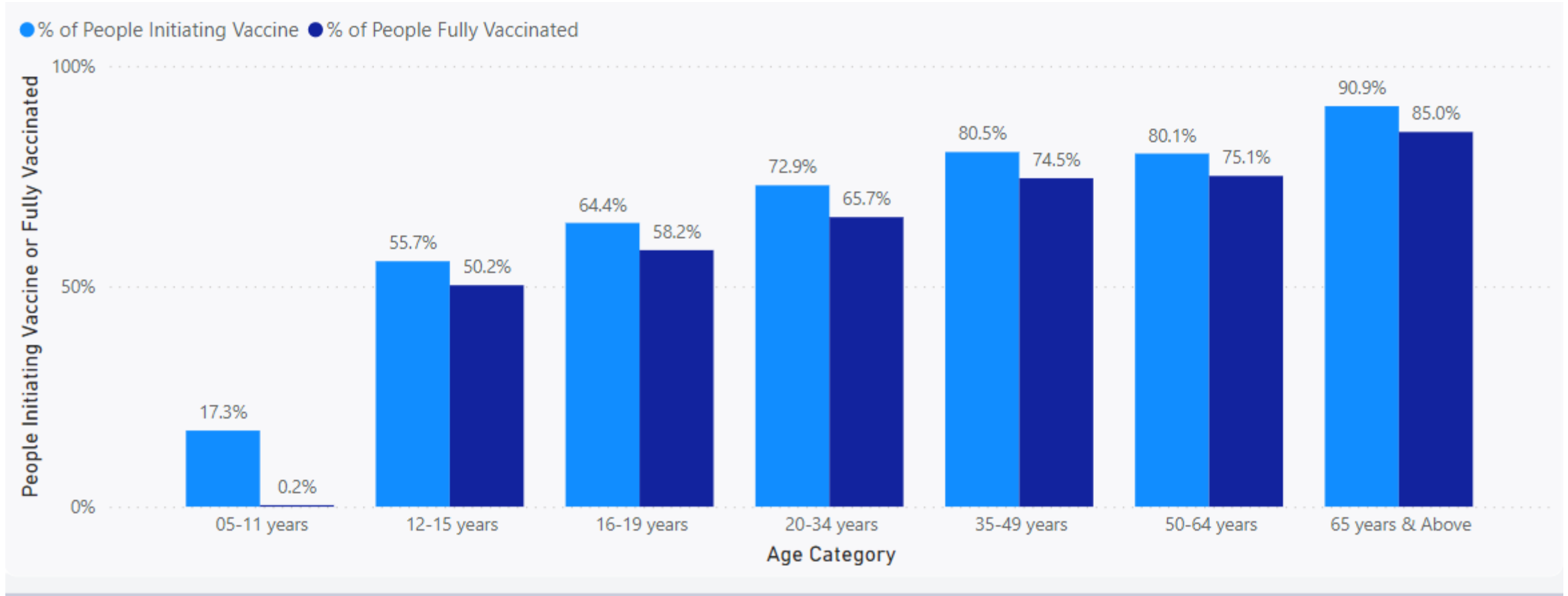
Percent of Population
Initiating Vaccination
(12+) **78.2%**

Percent of Population
Fully Vaccinated (12+) **72.2%**

Race/Ethnicity Coverage



Vaccinations by age group



Source <https://www.doh.wa.gov/Emergencies/COVID19/DataDashboard> (12/1/2021)

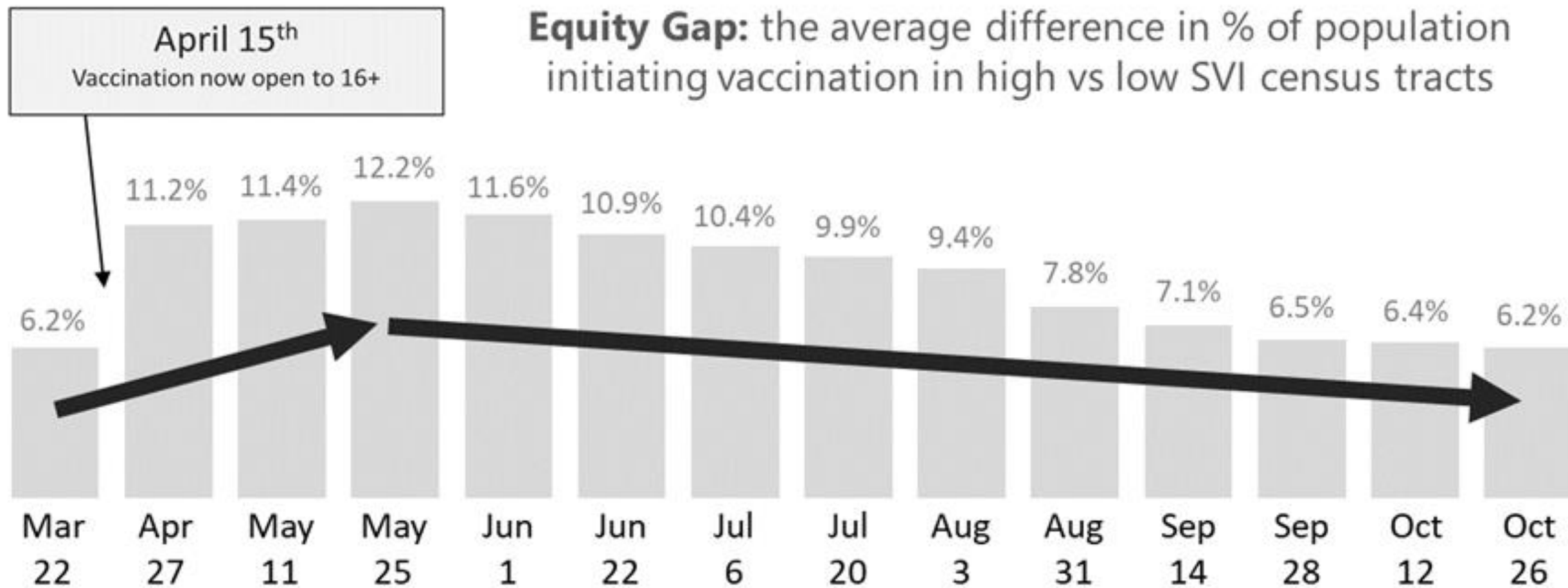


Promoting Health Equity

DOH is committed to addressing concerns regarding equity observed in our initial vaccine efforts.

Strategies:

- Multilingual communication and outreach
- Leveraging community partnerships
- Prioritizing equitable vaccine access in underserved communities
- Using community feedback to address barriers
- Coordinating with community partners to cover gaps in service to reach priority communities





What's coming next?

(Things we are waiting for...)

Moderna for adolescents

Moderna for children (6-11 y)

Moderna full BLA

Smaller Pfizer/Comirnaty package size

J & J for adolescents

J & J for children (6-11 y)

J & J full BLA

Boosters for kids (?)

Vaccine recommendations 6 months+ (?)

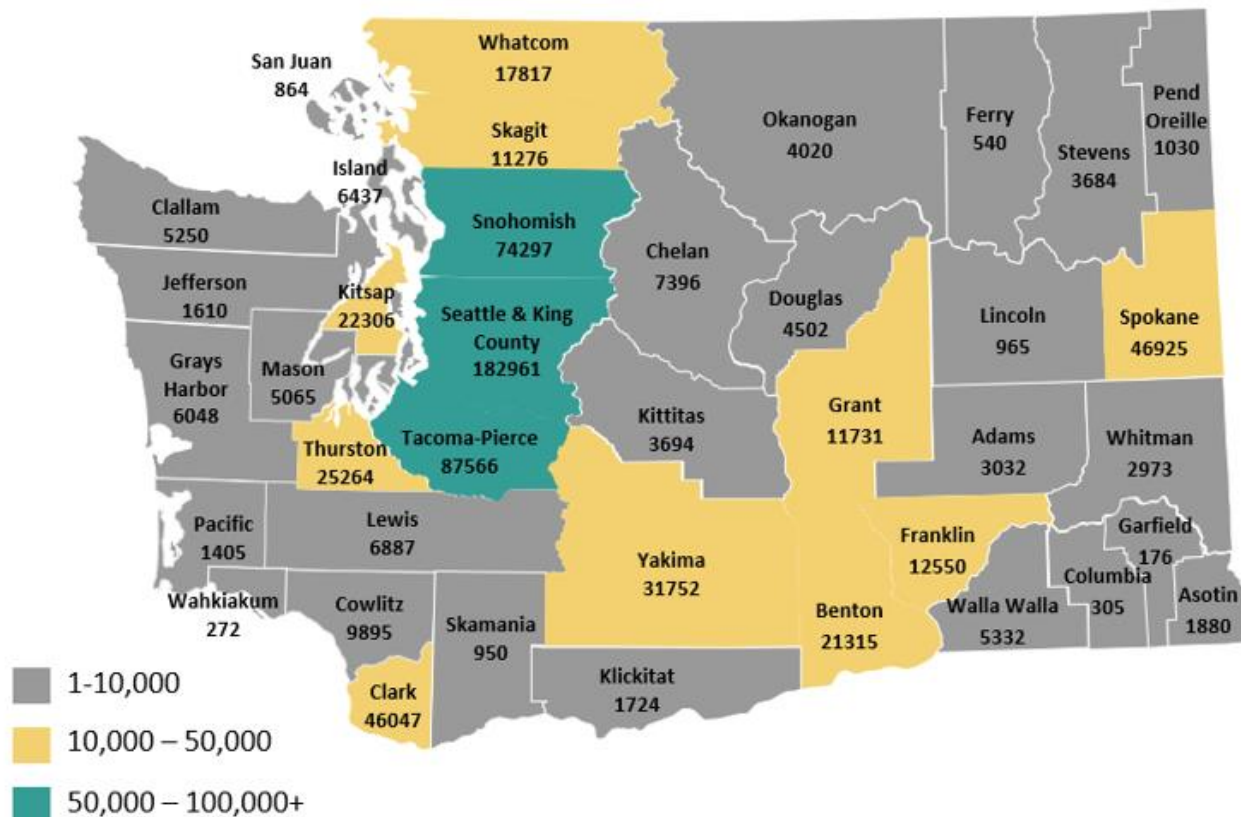


Pediatric vaccination (ages 5-11)

COVID-19 Pediatric Eligibility

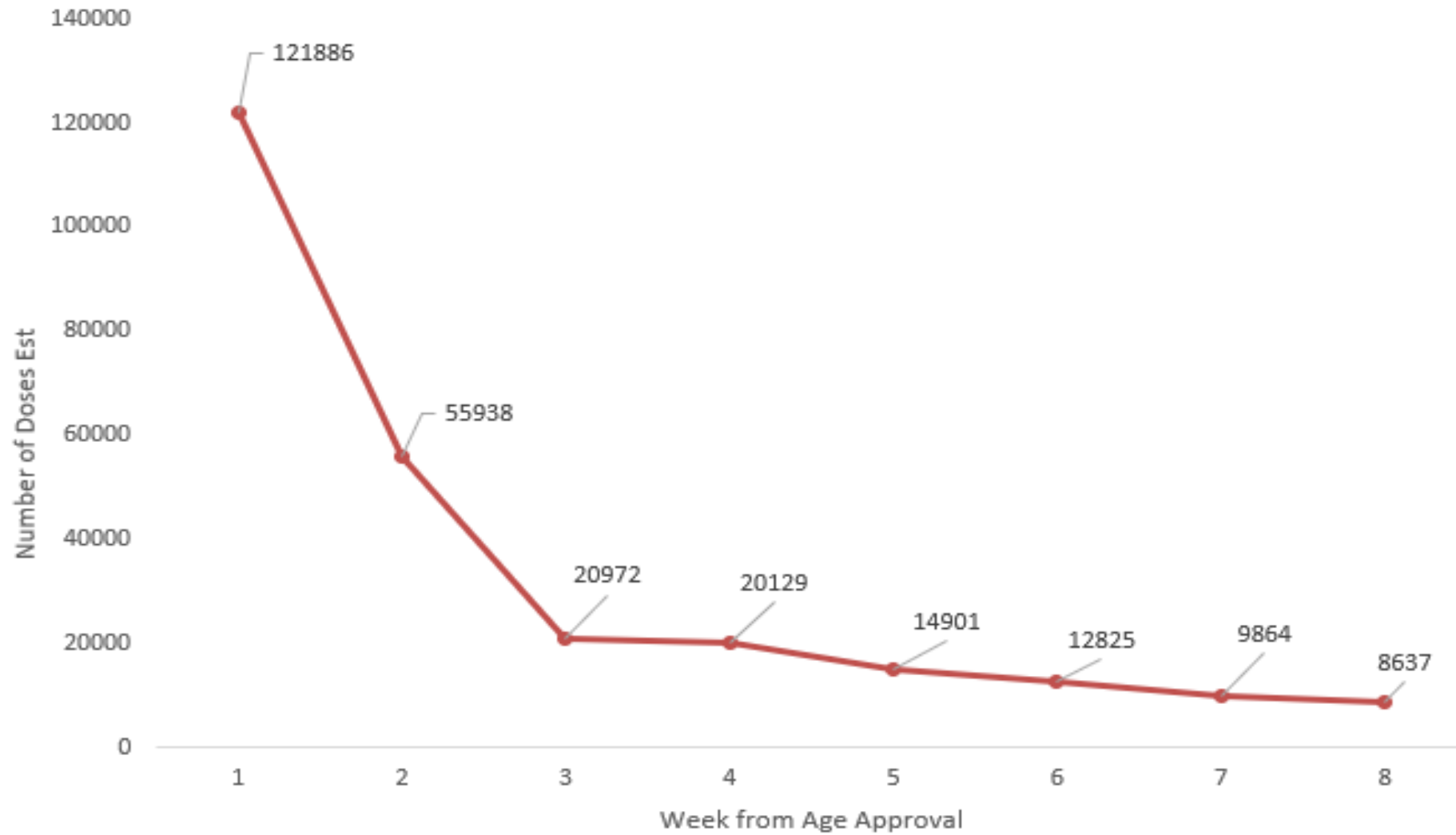
Washington State Local Health Jurisdictions

2020 Population Estimates for 5–11 year olds by county



~677,745 children
between the ages of 5
to 11 in WA.

Washington State Dose Administration for 12-15 Year Olds By Week



Vaccine Locator: types and scheduling



For COVID-19 Information Hotline, dial **1-800-525-0127**, then press #. Language assistance is available.

Find appointments

(within 50 miles)

Filters (0) ^

Clear filters

Vaccine types:

Moderna

Pfizer-BioNTech (Comirnaty), ages 12 and up

Johnson & Johnson's Janssen

Pfizer-BioNTech Pediatric, ages 5 - 11

Scheduling preferences:

Schedule online

Schedule by phone

Schedule by email

Walk-ins accepted

Waitlist available

Vaccine Locator: accessibility

Accessibility:

Walk up services

Waiting area available

Accessible parking

Wheelchair accessible

Vaccine communication card available

Vaccine communication card available in braille

Interpreters available

Individuals needing additional support may have family or friends accompany them

Drive-up services

Vaccine Locator: children and youth services

Children and Youth Services ^

Provide vaccines to children, ages 5-11

Provide vaccines to youth, ages 12-17

Consent allowed from a foster parent or other person authorized by a court to provide consent to medical care for a child in an out-of-home placement

Consent allowed from a person with signed authorization from parent to make health care decisions

Consent allowed from a relative responsible for health care

Consent allowed from school nurse, counselor, or homeless liaison (for a youth defined as homeless under the federal McKinney-Vento Homeless Education Act)

Consent allowed from youth who are legally emancipated or married to an adult

Consent allowed from youth qualifying under the Mature Minor Doctrine

Verbal consent allowed (over the phone)

Written consent allowed

Parent/Guardian/Authorized adult does not need to be physically present



Care-a-Van Updates

- Over 3000 doses administered via the Care-a-Van.
- Our 100th Care-a-Van event is today at Columbia Basin College in Pasco.
- We are beginning to receive requests for January and even into March of next year!

Health Promotion and Education: Coming Up

COVID-19 vaccine for ages 5-11

- New: Toolkit to help schools host a vaccine clinic
- Ongoing: Social media to educate parents
- New video: Misinformation/disinformation

Blog topics coming up (medium.com/wadepthealth)

- WAMVerify
- Vaccination for kids (5-11)
- Before your child's vaccine checklist (Spanish only)

Pending translations

- VaccinateWA.org/kids in 40 languages
- Several documents in large print and in Braille

Health Promotion and Education: New for Flu

New graphics, ads

- Flu partner toolkit updated with new TV ads and social graphics featuring families with young children



Emphasis on flu vaccine for children

- [Concerning data](#) show over 25% decline in flu vaccination rates among kids 6 months – 5 years
- Flu vaccination is important in all ages but especially those too young to receive COVID-19 vaccine. And vaccinate before holiday travel or gatherings

Community Shared Learning: Small Group Discussions



- ☐ Youth Vaccine Access and Engagement: How to Best Reach Youth and Families?
- ☐ Building Vaccine Confidence: Community Concerns?
- ☐ Vaccine Access and Outreach for People with Disabilities
- ☐ Community Care Efforts: Highlighting Lessons Learned, Strategies & Challenges
- ☐ Building Better Access to COVID-19 Information

Community Agreements

- Transparency
- Respect
- Take space, make space
- Grace
- Confidentiality
- Take care of yourselves and others



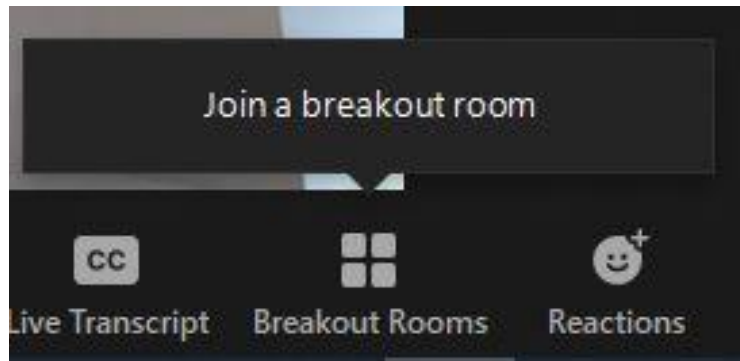
Breakout Rooms

- ASL interpreter paired with Collaborative members
- Spanish interpretation available in the Youth Access room
- Closed captioning available the Community Care room unless otherwise requested

**QUESTIONS
?**

**Please message us
in the Chat!**

Breakout Rooms



Breakout Rooms - In Progress		×
▼ Youth Vaccine Access/Engagement	Join	
▼ Building Vaccine Confidence	Join	
▼ Vacc Access: People w/ disabilities	Join	
▼ Community Care Efforts	Join	
▼ Access to COVID-19 Info	Join	



You can select which breakout room you want to join.

**QUESTIONS
?**

**Please message us
in the Chat!**



Thank You Speakers, Interpreters,
Captioners

Contact Us

DOH Collaborative email: vax.collaborative@doh.wa.gov



Closing Thoughts



To request this document in another format, call 1-800-525-0127. Deaf or hard of hearing customers, please call 711 (Washington Relay) or email civil.rights@doh.wa.gov.