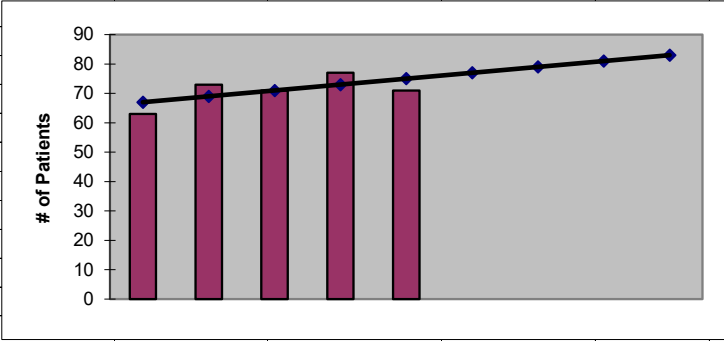




**2022**  
**Lewis County-Updated**  
**ESRD Need Projection Methodology**

Planning Area		6 Year Utilization Data - Resident Incenter Patients					
Lewis		2016	2017	2018	2019	2020	2021
Lewis County		52	63	73	71	77	71
<b>TOTALS</b>		<b>52</b>	<b>63</b>	<b>73</b>	<b>71</b>	<b>77</b>	<b>71</b>
<b>246-310-812(4)(a)</b>	Rate of Change		21.15%	15.87%	-2.74%	8.45%	-7.79%
	6% Growth or Greater?		TRUE	TRUE	FALSE	TRUE	FALSE
	Regression Method:	Linear					
<b>246-310-812(4)(c)</b>			Year 1	Year 2	Year 3	Year 4	Year 5
			2022	2023	2024	2025	2026
Projected Resident Incenter Patients	from 246-310-812(4)(b)		77.00	79.00	81.00	83.00	<b>85.00</b>
Station Need for Patients	Divide Resident Incenter by 4.8		16.04	16.46	16.88	17.29	<b>17.71</b>
	Rounded to next whole number		<b>17</b>	<b>17</b>	<b>17</b>	<b>18</b>	<b>18</b>
<b>246-310-812(4)(d)</b>	subtract (4)(c) from approved stations						
Existing CN Approved Stations	Total		21	21	21	21	<b>21</b>
Results of (4)(c) above			17	17	17	18	<b>18</b>
Net Station Need			4	4	4	3	<b>3</b>
Negative number indicates need for stations							
<b>Planning Area Facilities</b>							
Name of Center	# of Stations						
FMC Chehalis	14						
DaVita Cooks Hill	7						
<b>Total</b>	<b>21</b>						
Source: Northwest Renal Network / Comagine ESRD Network 16 data 2016-2021							
Most recent year-end data: 2021 posted 03/15/2022							

x	y	Linear
2017	63	67
2018	73	69
2019	71	71
2020	77	73
2021	71	75
2022		77.00
2023		79.00
2024		81.00
2025		83.00
2026		85.00



**SUMMARY OUTPUT**

<i>Regression Statistics</i>	
Multiple R	0.620173673
R Square	0.384615385
Adjusted R Square	0.179487179
Standard Error	4.618802154
Observations	5

<b>ANOVA</b>					
	<i>df</i>	<i>SS</i>	<i>MS</i>	<i>F</i>	<i>Significance F</i>
Regression	1	40	40	1.875	0.264406015
Residual	3	64	21.33333333		
Total	4	104			

	<i>Coefficients</i>	<i>Standard Error</i>	<i>t Stat</i>	<i>P-value</i>	<i>Lower 95%</i>	<i>Upper 95%</i>	<i>Lower 95.0%</i>	<i>Upper 95.0%</i>
Intercept	-3967	2948.938973	-1.345229602	0.271199936	-13351.83994	5417.839939	-13351.8	5417.84
X Variable 1	2	1.460593487	1.369306394	0.264406015	-2.648260345	6.648260345	-2.64826	6.64826