



HEALTH EQUITY ZONES INITIATIVE

Community Advisory Council
Monday, April 25, 2022

Land and Labor Acknowledgment

Additional Resources

- Resource map: <https://native-land.ca/>
 - Borders based on seasonal uses and historical understandings.
- Treaties: <https://goia.wa.gov/resources>
 - Legal canons of construction led courts to interpret these treaties in favor of tribes.
- History: <https://www.historylink.org/>

Welcome, Health Equity Zones Community Advisory Council!

We are honored to have Sen. Keiser joining us for this inaugural meeting.

Please introduce yourself to the CAC and Sen. Keiser:

- Name
- Location
- Role/title, place of work or affiliation

Agenda

Relationship Building

Community Agreements

HEZ Community Advisory Council Purpose, Roles, and Commitments

Timeline & Workplan

Break

Guiding Principles

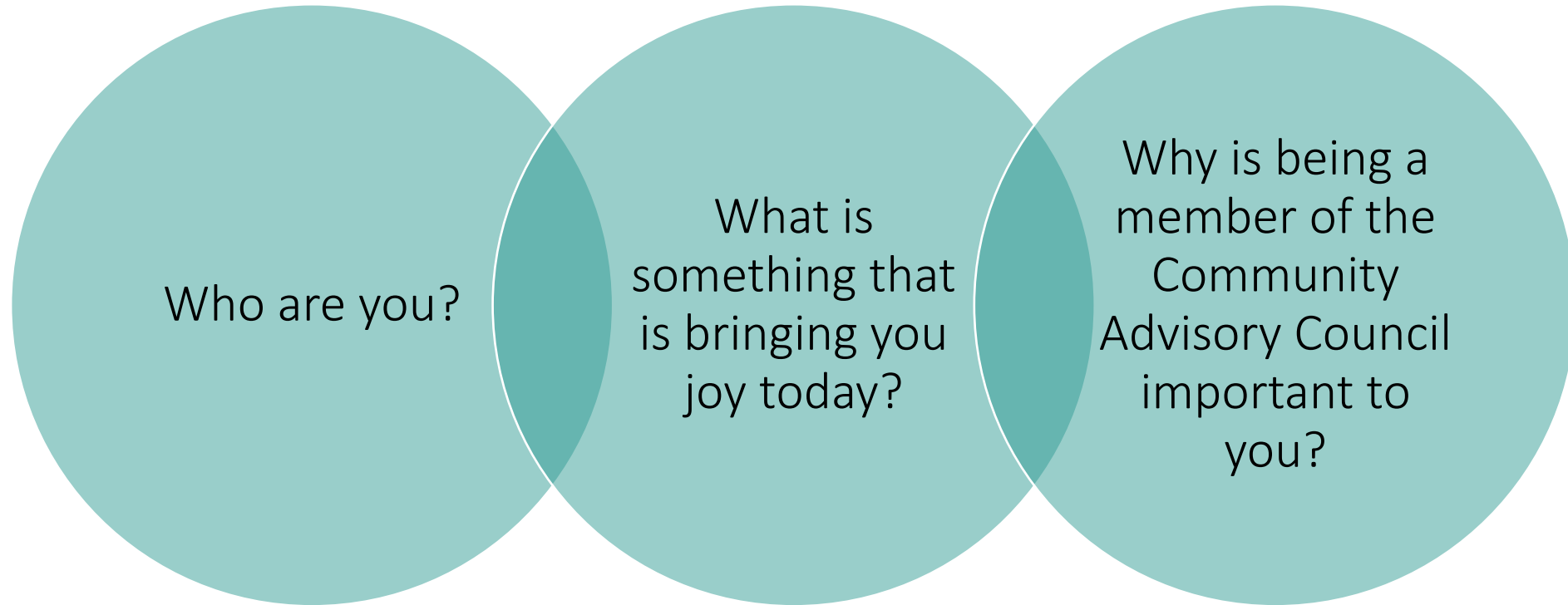
Decision-making Process

Small Group Discussion

Closing & Next Steps

Relationship Building

In your small group, spend the next 15 minutes connecting and getting to know each other.



Community Agreements

- Assume positive intent.
- Engage in dialogue – not debate.
- Hold yourself and others accountable for demonstrating cultural humility.
- Be open, transparent, and willing to make mistakes.
- Embrace the power of humble listening.
- Create trusting and safe spaces – where a little bit of discomfort is okay.
- Commit to having conversations that matter by speaking up to bridge divides.

What agreements would you like to add?

HEZ Community Advisory Council Purpose

- Convene a group of people to establish the foundation of the Washington State Health Equity Zones Initiative - a new initiative to support communities in addressing the health disparities they want to prioritize.
- Ensure efforts are community-centered and health equity-driven, with focused attention given to communities experiencing the greatest health inequities.

HEZ Community Advisory Council Outcomes

- Identify 2-3 geographic Health Equity Zones within Washington state using a council-approved selection criteria and decision-making process.
- Finalize a workplan for Health Equity Zone selection, including major milestones and connections to other Department of Health-supported workgroups.
- Establish shared member commitments, group norms, and how decisions will be made.
- Support the gathering of broad community input and guidance to inform key decisions.

Roles and Commitments

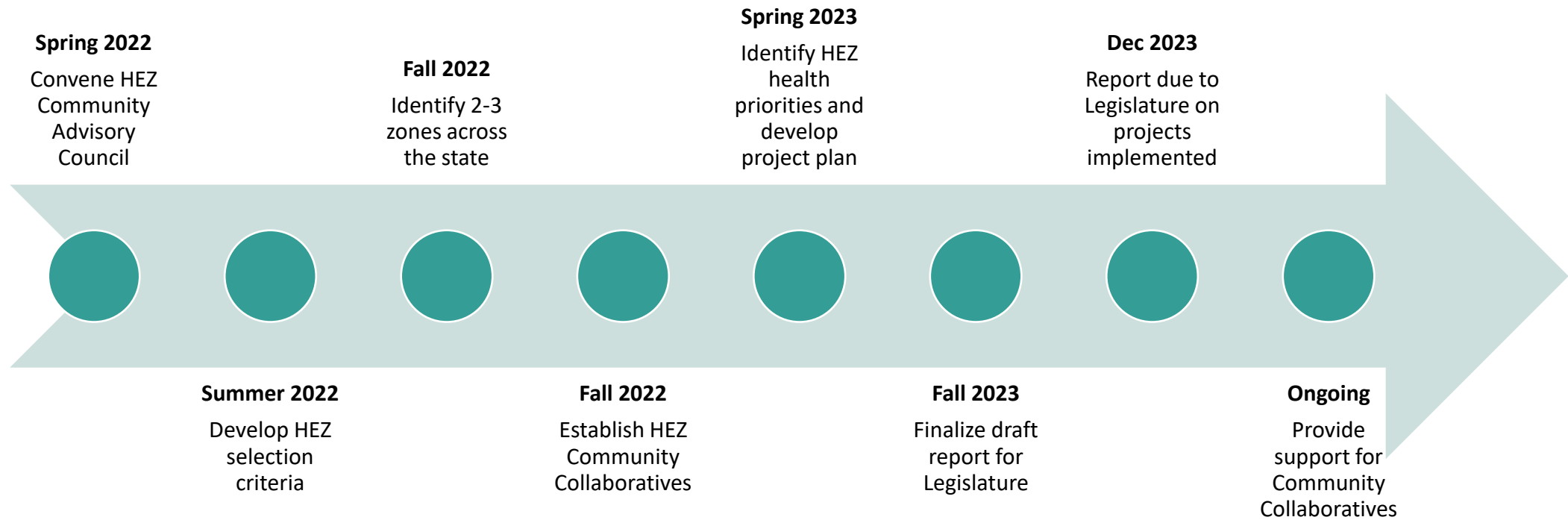
As a HEZ CAC member, your role is to:

- Provide bidirectional communication with community members and stakeholders
- Attend monthly meetings and additional meetings as needed
- Review materials between meetings and come to meetings prepared to provide feedback and contribute to decision-making

Members can anticipate engaging with the HEZ Initiative about 6.5 hours per month.



HEZ Initiative Estimated Timeline

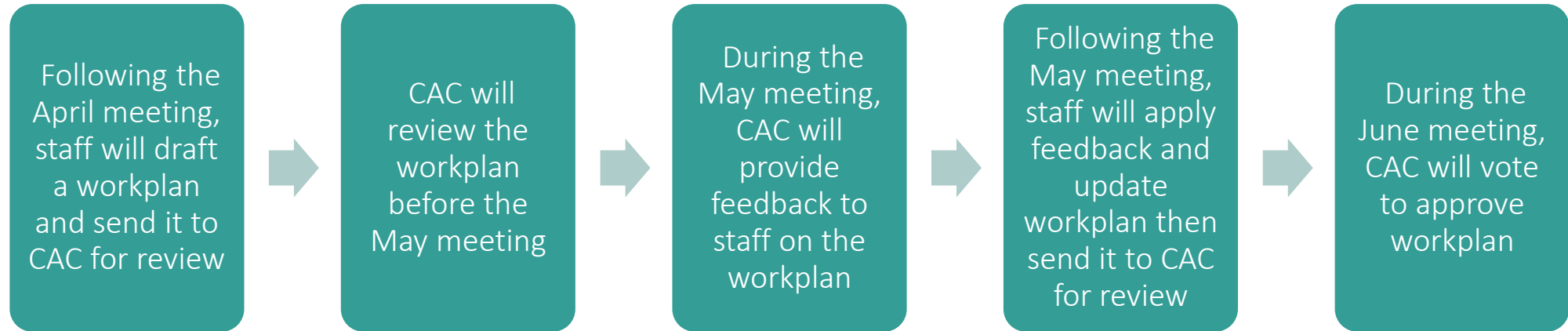


Tentative Milestones

April	May	June	July	August	September	October	November	December
<ul style="list-style-type: none">• Establish CAC structure• Discuss resources and information needed to move forward	<ul style="list-style-type: none">• Develop workplan• Finalize guiding principles and decision-making process	<ul style="list-style-type: none">• Establish how data and storytelling will be used to guide decisions	<ul style="list-style-type: none">• Identify selection criteria	<ul style="list-style-type: none">• Establish selection process	<ul style="list-style-type: none">• Launch selection process• Outreach and engagement	<ul style="list-style-type: none">• Select 2-3 zones• Outreach to existing coalitions and networks within zones	<ul style="list-style-type: none">• Establish Community Collaboratives within each zone	<ul style="list-style-type: none">• Community Collaboratives begin identifying health priorities

Example Process Flow

Below is an example process to develop the workplan:





10 Minute Break

Why are guiding principles important?

On your phone or laptop, please go to the link to the right.



How will the CAC
make decisions?

Health Equity Zone As Defined in Senate Bill 5052

“....“health equity zone” or “zone” means a contiguous geographic area that demonstrates measurable and documented health disparities and poor health outcomes, which may include but are not limited to high rates of maternal complications, newborn health complications, and chronic and infectious disease, is populated by communities of color, Indian communities, communities experiencing poverty, or immigrant communities, and is small enough for targeted interventions to have a significant impact on health outcomes and health disparities.”

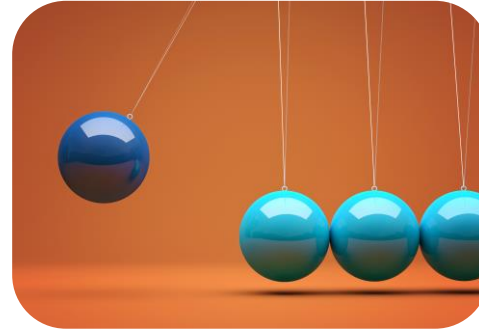
Criteria Considerations



Geography



Population



Metrics



Strengths

Examples

Regions
Counties
Cities/Towns
Zipcodes
Census Tracts/Blocks

Size
Density
Rural-Urban
Demographics
Redlined communities

Socioeconomic
Environmental
Health outcomes
Life expectancy
Health behaviors

Community trust
Partnerships
Experience
Growth potential/capacity
Commitment to equity

Small Group Discussion

In your small groups, please discuss the following questions:

- How will we identify communities experiencing the greatest health disparities or inequities?
- What resources or information are needed to move forward with discussions on criteria and zone selection?

DOH staff will take notes in each group.

Closing & Next Steps

- Bri will send out a Doodle poll to determine meeting schedule
- Request for volunteers to develop decision-making process
- What support do you need from DOH staff to be successful?
- Financial incentives – Bri will reach out for addresses
- Next meeting:
 - Approve decision-making process and guiding principles
 - Develop draft workplan



DOH 141-057

To request this document in another format, call 1-800-525-0127. Deaf or hard of hearing customers, please call 711 (Washington Relay) or email civil.rights@doh.wa.gov.