

Met kopwe fori ika Emon aa wor ren ekewe Esissinen Samwau?



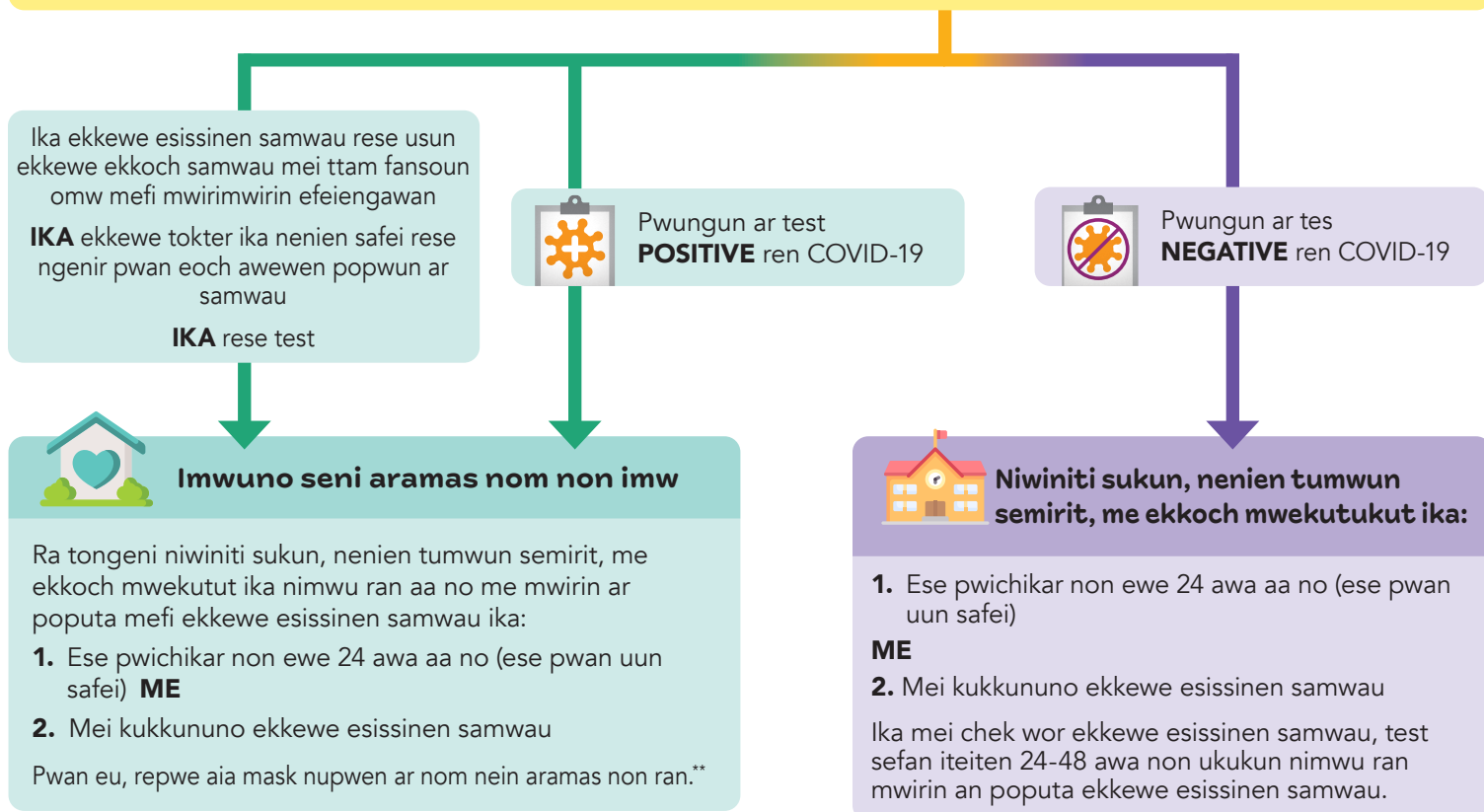
Ei flowchart faniten ekkewe sukun K-12, ekkewe nenien túmwún semirit, me ekkoch ekkewe mwékútúkút mei akéké fengen

Ika ah wor ren emon eu ika napeseni eu ekkei esissinen semwau:

- Pwichikar (nap seni 100.4°F ika 38°C) ika feu
- Mwii ika weires omw ngasangas
- Metekitek inisumw ika neutumw
- Minafe omw kose chiwen neni ika tini mettoch
- Kichimwor (Omw keran mwor, ekkesiwin omw ewe mwor, ika weiresino omw ewe mwor)
- Eningaw, mwus, ika feiseni
- Menu ika apwangapwang
- Metek non chior
- Pin ika sur pweetumw



Imwuno seni aramas nom non imw iwe test ren Covid-19



Ekkewe nenien tumwun semirit repwe katon each nour ekkewe ennuK non Washington (WAC, Washington Administrative Code) me metrepwe need faniten laisen pwan fiti ngeni ekkoch eureur minne ururun repwe fiti ngeni.



DOH 820-229 August 30, 2022 Chuukese Ika ke mochen kopwe nounou ei taropwe non pwan ew sokkun nikinikin, kopwe kokori 1-800-525-0127. Ren ekkewe rese sinei fos me rese tongeni rongorong, repwe kokori 711 (Washington Relay) ika fen mak ngenir non email ngeni ewe civil.rights@doh.wa.gov.

- * Ika ewe semirit mei kukkun seni ier ruu nge EE CHÉK pin ika súr pwéétun, ese pwan need epwe test ika imwuseni aramas nom non imw. Ika mei wattenó ekkewe esissinen samwau ren ewe semirit ika tam seni nimwu ran, kopwe fiti emwenin ewe flowchart faniten semirit watte seni ruu ier iwe mei pwan fokkun pesepes omw kopwe kokkori tokter ika pioing.
- ** Ika kese tongeni aia mask epwe mas each ngeni won sangunum: Kopwe awesi ewe 10-ran omw kopwe imwuno seni aramas nom non imw. Katon en minen kapas emwen fanitan nenien tumwun semirit K-12 [K-12/emwenin túmwúnun semirit](#) ren pwan ekkoch tichikin porous.

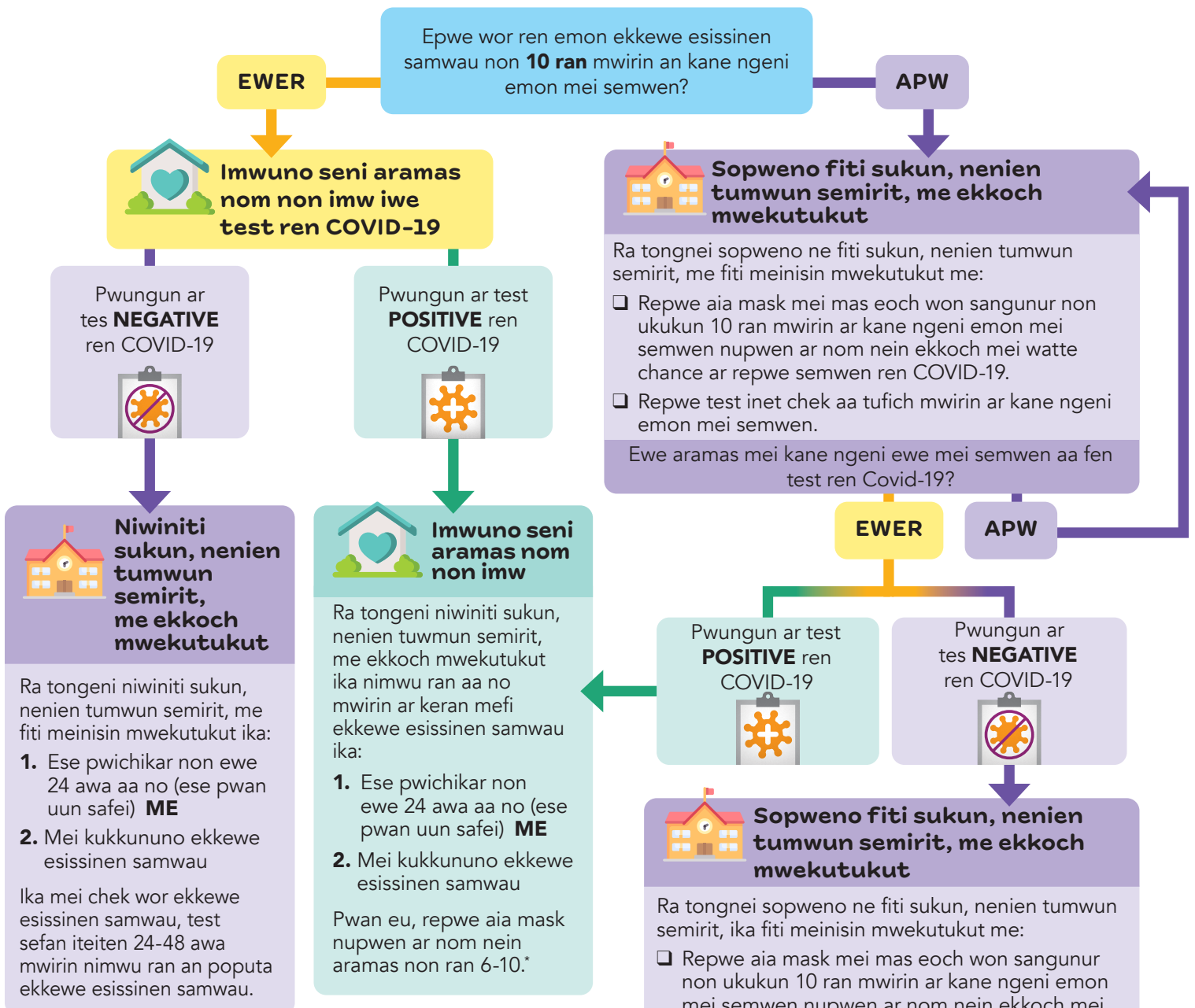
Met kopwe fori ika ah wor esineisin omw kane ngeni emon mei semwen ika ka pwisin mefi pwe en mei kane ngeni emon mei semwen ren Covid-19



Ei flowchart faniten ekkewe sukun K-12, ekkewe nenien túmwún semirit, me ekkoch ekkewe mwékútúkút mei akéké fengen

Ika mwo en mei apwos ika kose apwos, fiti ekkei emwen:

- Sopweno ne fiti sukun, nenien tumwun semt, ika pwan ekkoch mwekutukut.
- Nennengeni ekkewe esissinen samwau non ukukun 10 ran mwirin omw kane ngeni emon mei semwen.
- Kopwe test inet chek ah tufich mwirin omw kane ngeni emon mei semwen.
- Kopwe aia mask mei mas each won sangunumw non ukukun 10 ran mwirin omw kane ngeni emon mei semwen.



* Ika kose tongeni aia mask mei mas each won sangunum: Kopwe awesi ewe 10 ran omw kopwe imwuno seni aramas nom non imw Katon en minen kapas emwen fanitan nenien tumwun semirit K-12 [K-12/emwenin túmwúnún semirit](#) ren pwan ekkoch tichikin porous.