

Ta eo Kwōn Kōmmane ñe Juōn Armij ewōr an Kakōlle



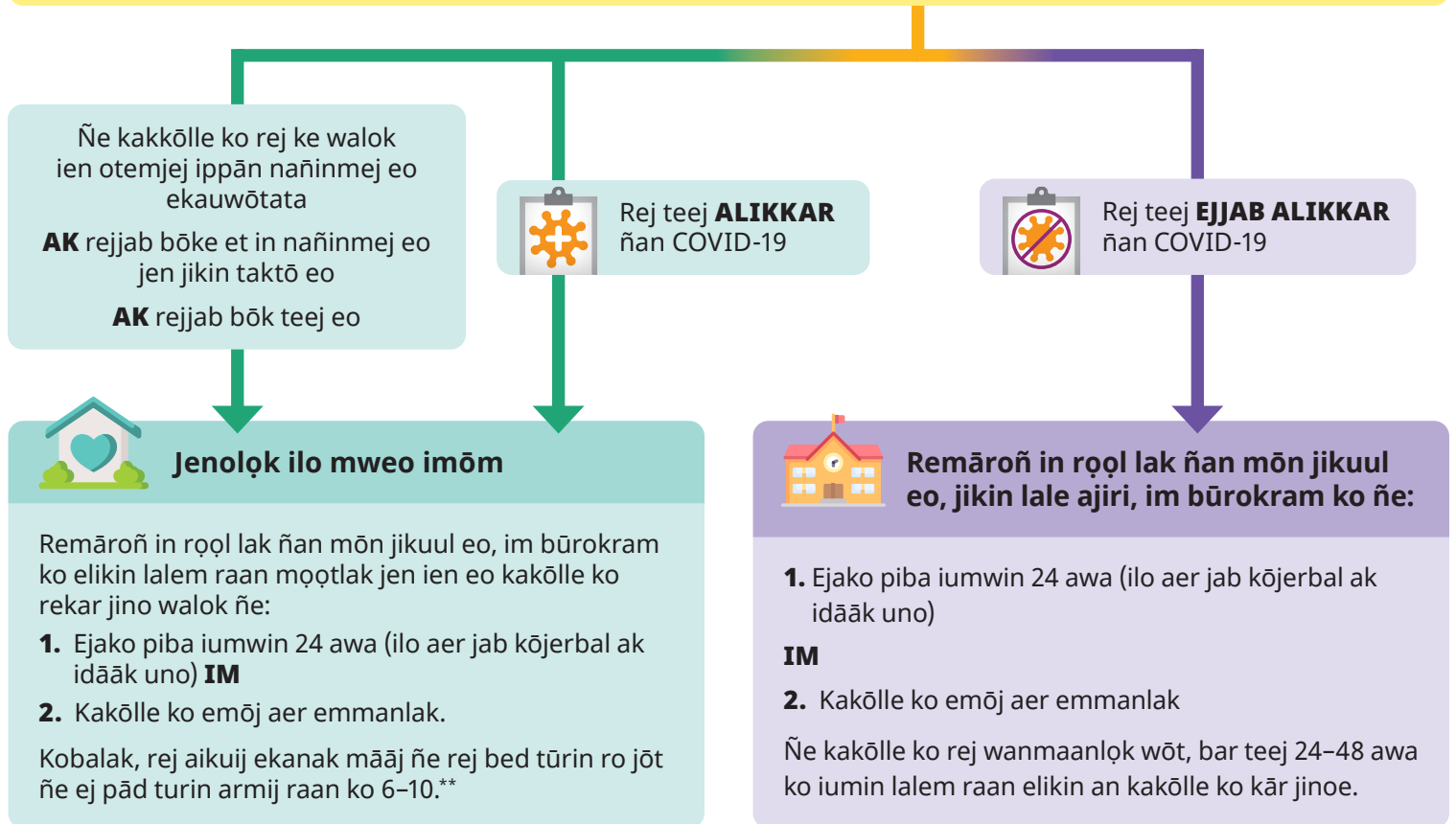
Jaat in ej ñan K-12 jikuul ko, jikin lale ajiri, im etal ñan būrokram ko jōt.

Ñe juōn armij ewōr juōn ak elaploḱ ian kakōlle kein:

- Piba ($\geq 100.4^{\circ}\text{F}/38^{\circ}\text{C}$) ak piḱ
- Ikkijelak ilo am menono ak ben am menono
- Metak majel ak ānbwin
- Ekāāl an jako am edjoñ ak āt bwiin jabdewōt
- Pḱpḱok (kāāl, oktak, ak nana lak)
- Addeboulul, emmōj, ak bidodo lojeem
- Lab mōk
- Metak bōro
- Bon bḱtiim ak uwir bḱtiim*



Jenoloḱ ilo mweo imōm im teej ñan Covid-19



Jikin taktō an ajiri ej aikuj in lale Washington Administrative Code (WAC, Kakien ko an Washington) im aikuj in license im loore jabdewōt buñtoñ ko rej aikuj.



DOH 820-229 August 4, 2022 Marshallese
Ñan kajjitōk bwe ren lewōj peba in ilo bar juon wāwein,
kwōn kaḱḱok 1-800-525-0127. Armej ro rej jarroñroñ ren kaḱḱok
711 (Washington Relay) ak email civil.rights@doh.wa.gov.

* Ñe ajiri eo ej ruo an yiiō im wōr Wōt an nañinmej ilo an bōn/uwirwir bḱtin ippān ejeloḱ bar kakōlle, ejjab aikuj in teej im jenoloḱ. Ñe kakōlle ko an ajiri eo enij laploḱ im aitōklak jān lalem raan ko, loore jaat eo ñan ajiri ro elaploḱ jān ruo im elap rojañ in tōbar juōn jikin taktō.
** Ñe kwōjjab māroñ in ekanak juōn māāj emman-joñan: Kwōj aikuij in kamōj am jenoloḱ iumwin 10 raan ak māke lak iam ilo mweo imōm. Lale [K-12/tōl ñan lale ajiri](#) ñan melele ko relaploḱ.

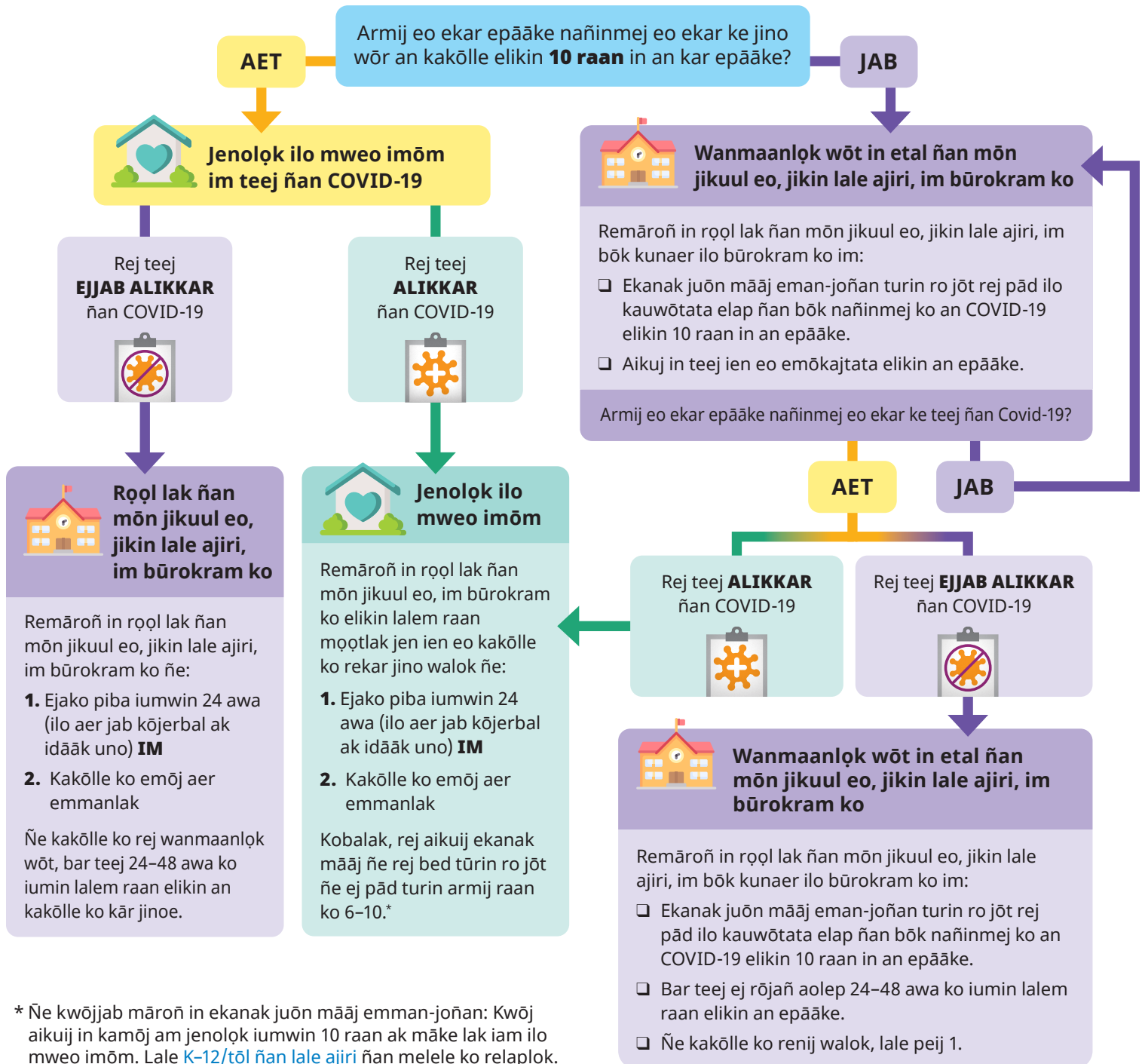
Ta eo kwōn kōmmāne ñe enij iwaj juōn kōjjelā in am kar epāāke nañinmej eo an COVID-19



Jaat in ej ñan K-12 jikuul ko, jikin lale ajiri, im etal ñan būrokram ko jōt.

Jokdoon wāwein wā, tōl kein ej kōjērbale unin tōl kein ilal:

- Wanmaanlōk wōt in etal ñan mōn jikuul eo, jikin lale ajiri, im būrokram ko.
- Waje kakōlle ko 10 raan elikin an epāāke nañinmej eo.
- Aikuj in teej ien eo emōkajata elikin an epāāke.
- Aikuj in ekanak juōn māāj eman-joñan iumin 10 raan elikin an epāāke.



* Ñe kwōjjab māroñ in ekanak juōn māāj emman-joñan: Kwōj aikuij in kamōj am jenolōk iumwin 10 raan ak māke lak iam ilo mweo imōm. Lale [K-12/tōl ñan lale ajiri](#) ñan melele ko relaplōk.