



2023-2024 FLU VACCINE UPDATES WEBINAR

October 5, 2023

Before We Start

- All participants will be muted for the presentation.
- You may ask questions using the Q&A box, and questions will be answered at the end of the presentation.
- Continuing education is available for nurses, medical assistants, and pharmacists/pharmacy techs
- If you're watching in a group setting and wish to claim CE credit, please make sure you register for the webinar and complete the evaluation as an individual.
- You can find more information here: [2023-24 Flu Updates Webinar | Washington State Department of Health](#)

Continuing Education

- This nursing continuing professional development activity was approved by Montana Nurses Association, an accredited approver with distinction by the American Nurses Credentialing Center's Commission on Accreditation. Upon successful completion of this activity, 1.0 contact hours will be awarded.
- This program has been granted prior approval by the American Association of Medical Assistants (AAMA) for 1.0 administrative continuing education unit.
- This knowledge activity was approved by the Washington State Pharmacy Association for 1.0 contact hours. The Washington State Pharmacy Association is accredited by the Accreditation Council for Pharmacy Education as a Provider of continuing pharmacy education.



Disclosures

The planners and speakers of this activity have no relevant financial relationships with any commercial interests pertaining to this activity.

Learning Objectives

- Describe influenza epidemiological data
- Discuss respiratory disease and influenza vaccination dashboards
- Describe vaccine inventory and ordering
- Discuss updated influenza vaccine recommendations
- Identify communication and health promotion strategies

Presenters

Washington State Department of Health staff

- Anna Unutzer, Influenza Epidemiologist
- Molly Simonson, Epidemiologist
- Jacki Stockdale, Operations and Response Coordinator
- Trang Kuss, Acting Section Manager Clinical, Quality, and Schools
- Samantha Seaman, Health Educator
- Robert Rankin, Health Educator



FLU EPIDEMIOLOGY
ANNA UNUTZER

Influenza Background and Transmission

Agent

- Flu is caused by influenza virus. Types A and B infect humans.

Symptoms

- Sudden onset of fever ($\geq 38^{\circ}\text{C}$)
- cough and/or other respiratory symptoms (eg. shortness of breath) and systemic symptoms (fatigue, muscle soreness, headache)
- *Note: symptoms in the elderly may be atypical (Fever may be absent, patients may present with anorexia, mental status changes)*

Complications

- Pneumonia and worsening respiratory status in patients with underlying chronic obstructive lung disease and congestive heart failure

Transmission

- Large respiratory droplets are expelled, direct contact with droplets, followed by touching nose/mouth

Infectiousness

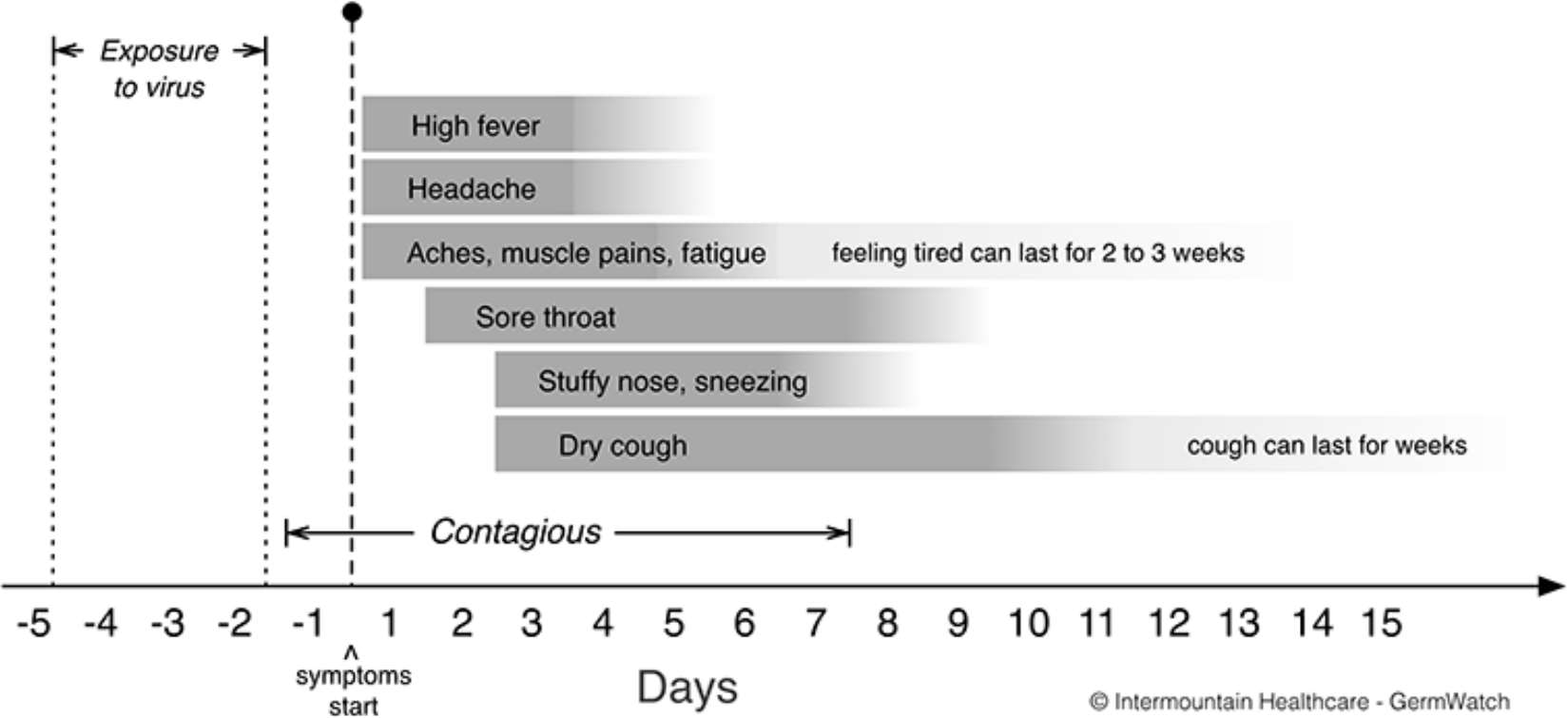
- Begins 24 hours prior to onset of illness. May shed virus for five or more days after symptom onset

Incubation Period

- 1-4 days

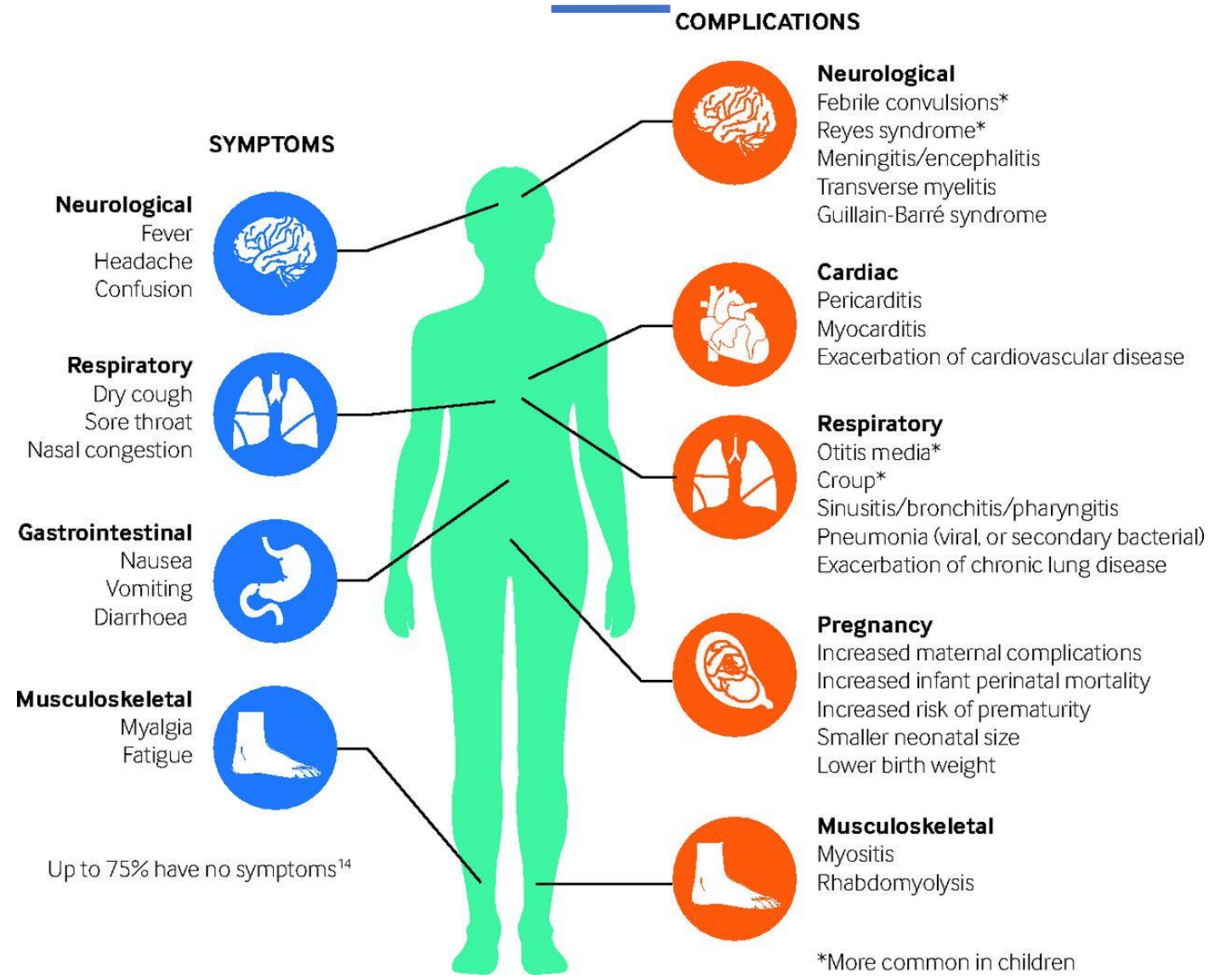
Influenza Background and Transmission

Influenza Virus Infection Timeline



© Intermountain Healthcare - GermWatch

Common Symptoms of Influenza



*More common in children

Introduction to Influenza Epidemiology

CDC flu season

- Week 40 (early October) - Week 20 (mid May)

Influenza surveillance uses a multifaceted approach to estimate morbidity, mortality, characterize viruses and strains, identify viruses with pandemic potential, and guide decisions for intervention.

Components of National Influenza Surveillance

1. Virologic Surveillance
2. Outpatient Illness Surveillance
3. Summary of the Geographic Spread of Influenza
4. Hospitalization Surveillance
5. Mortality Surveillance

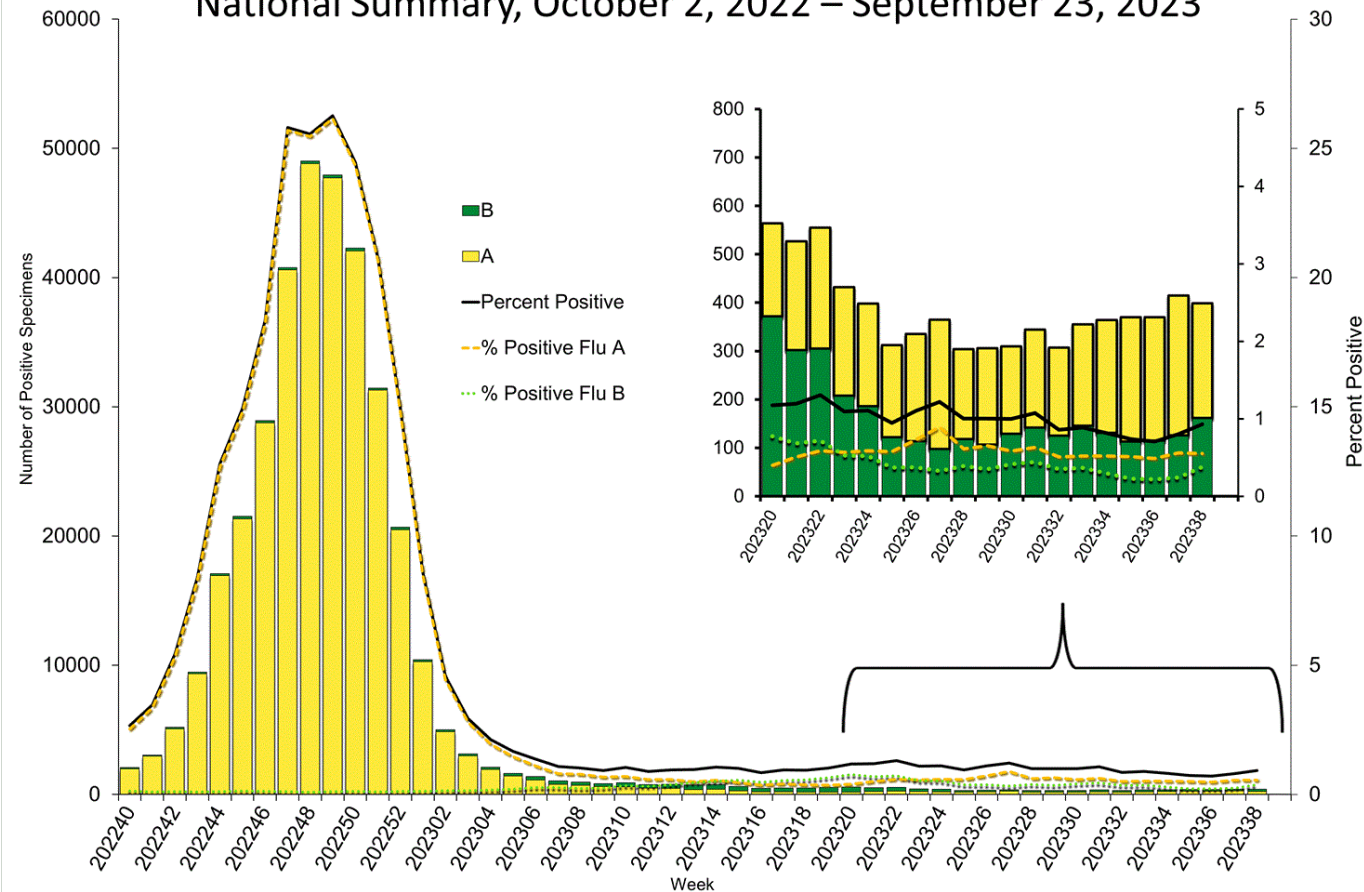
NATIONAL INFLUENZA SURVEILLANCE



2022-2023 SEASON

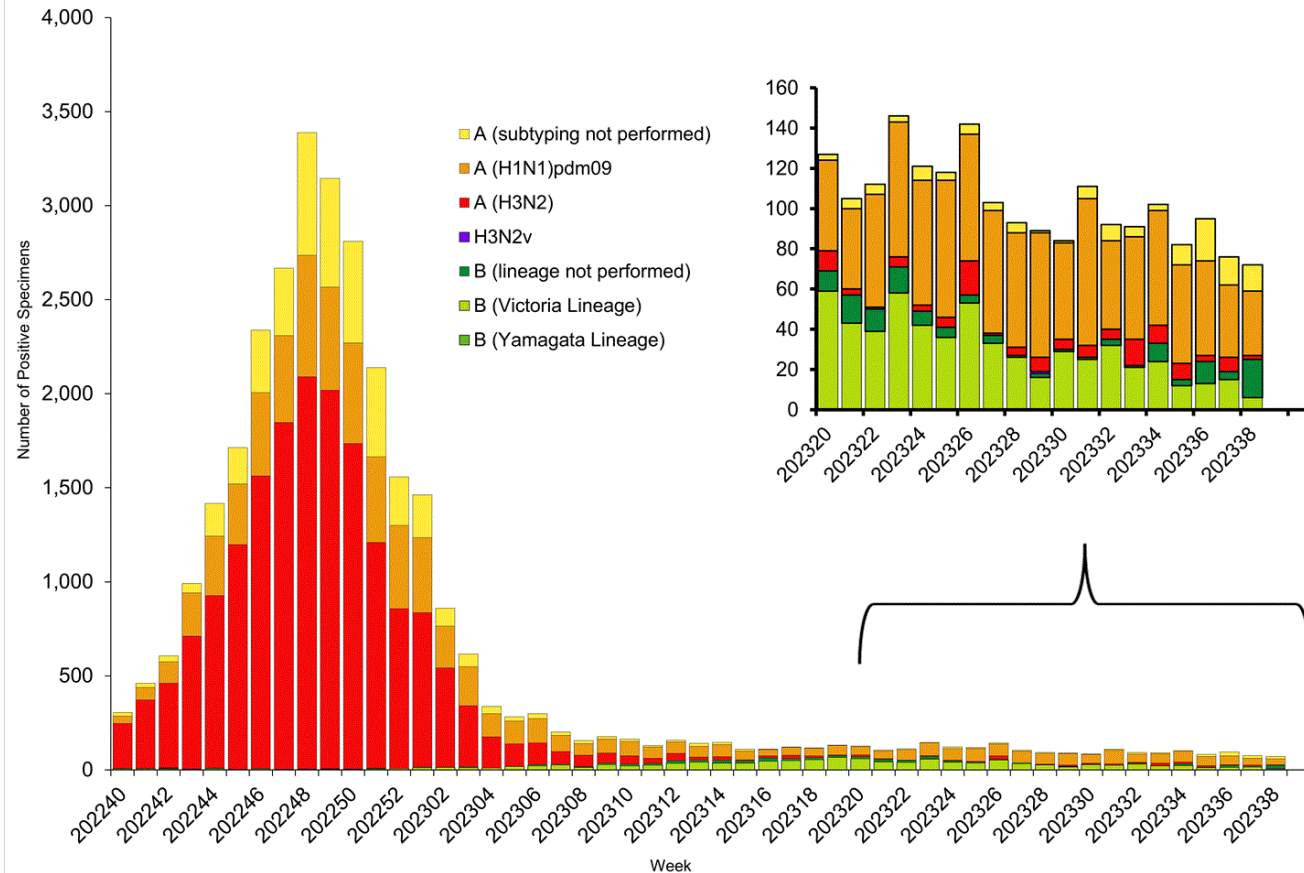
Influenza Positive Tests, National Clinical Laboratories

Influenza Positive Tests Reported to CDC by U.S. Clinical Laboratories,
National Summary, October 2, 2022 – September 23, 2023

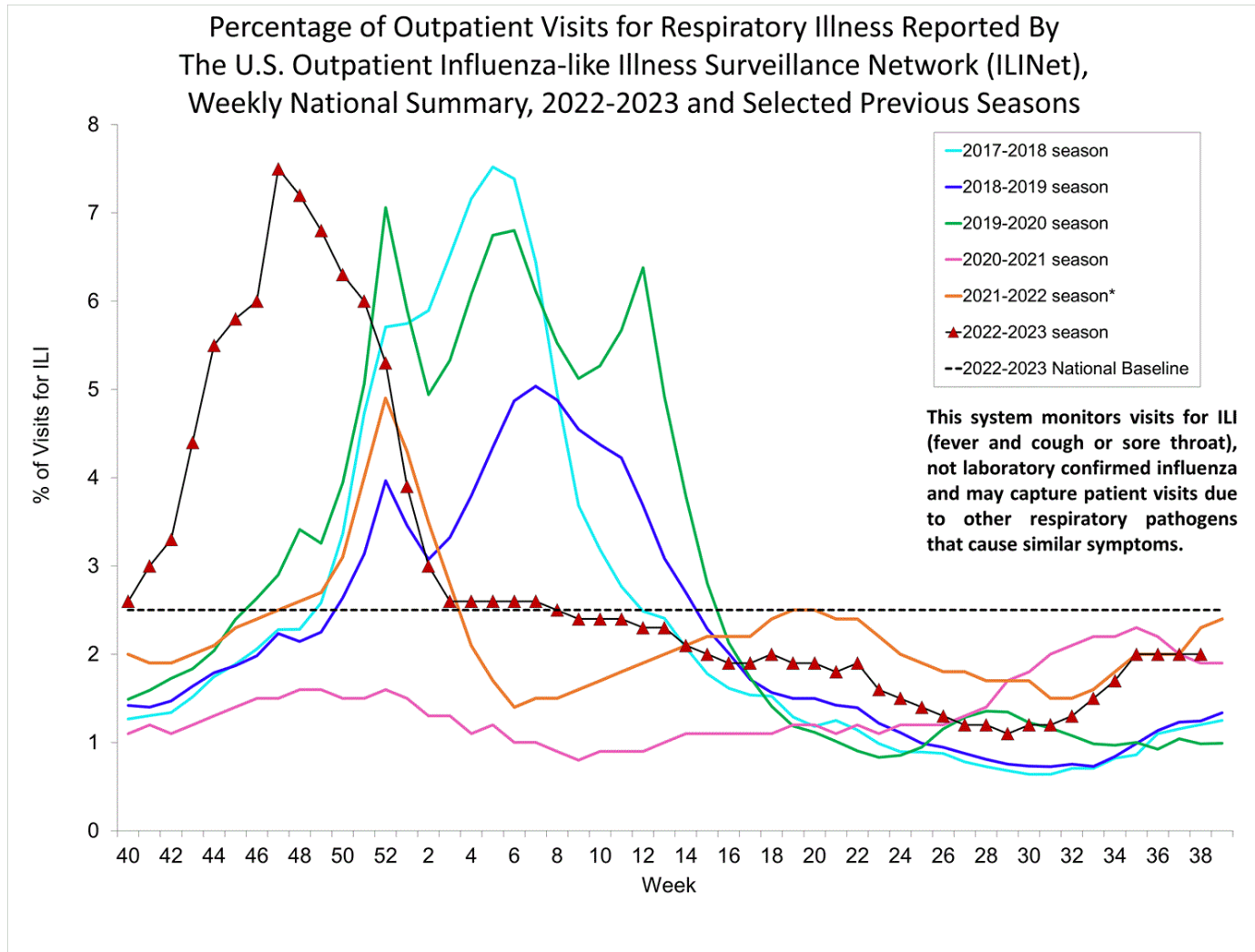


Influenza Positive Tests, National Public Health Laboratories

Influenza Positive Tests Reported to CDC by U.S. Public Health Laboratories,
National Summary, October 2, 2022 – September 23, 2023



National Percentage of Visits for Influenza-Like Illness

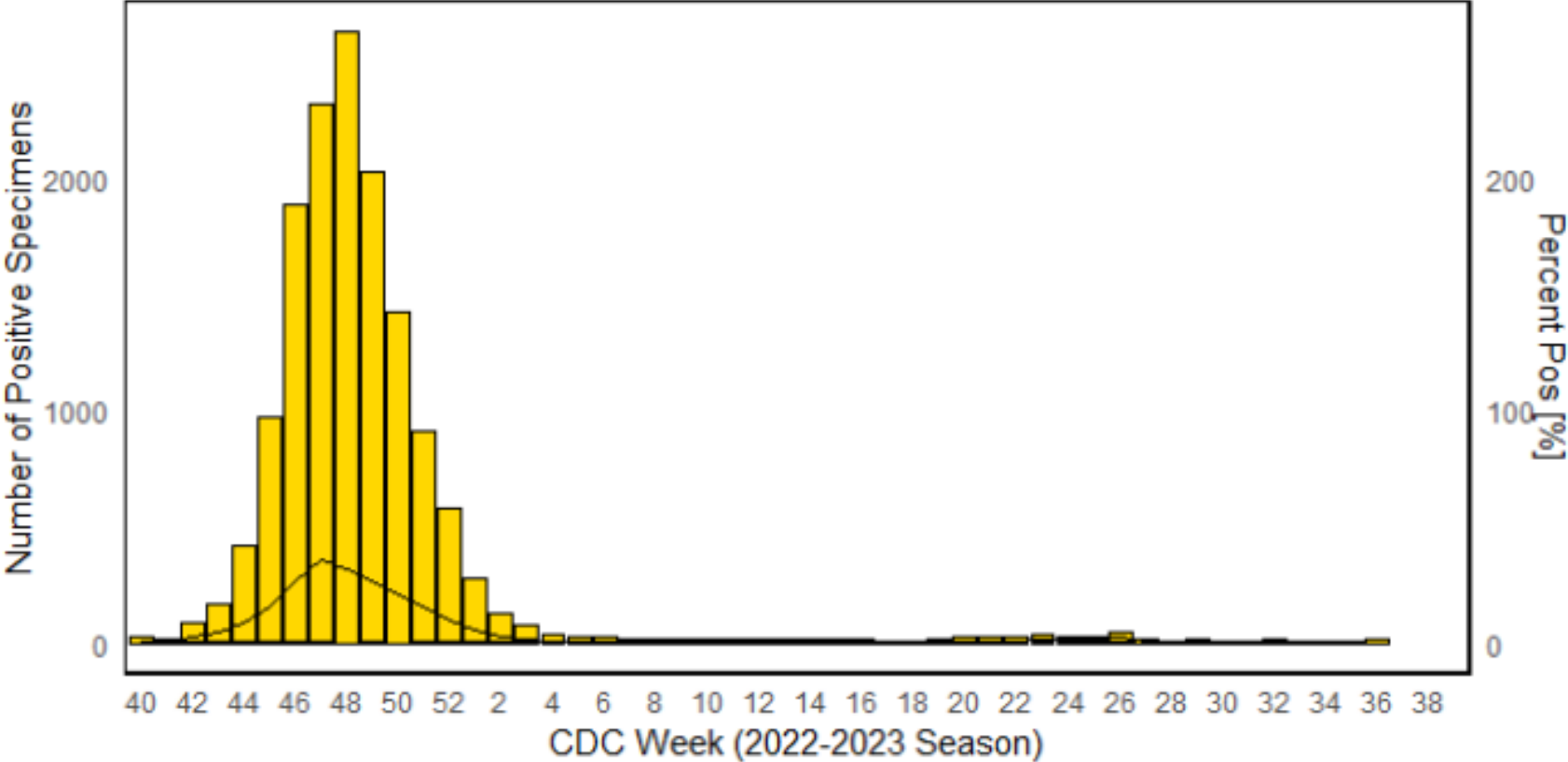


WASHINGTON STATE INFLUENZA SURVEILLANCE

2022-2023 SEASON

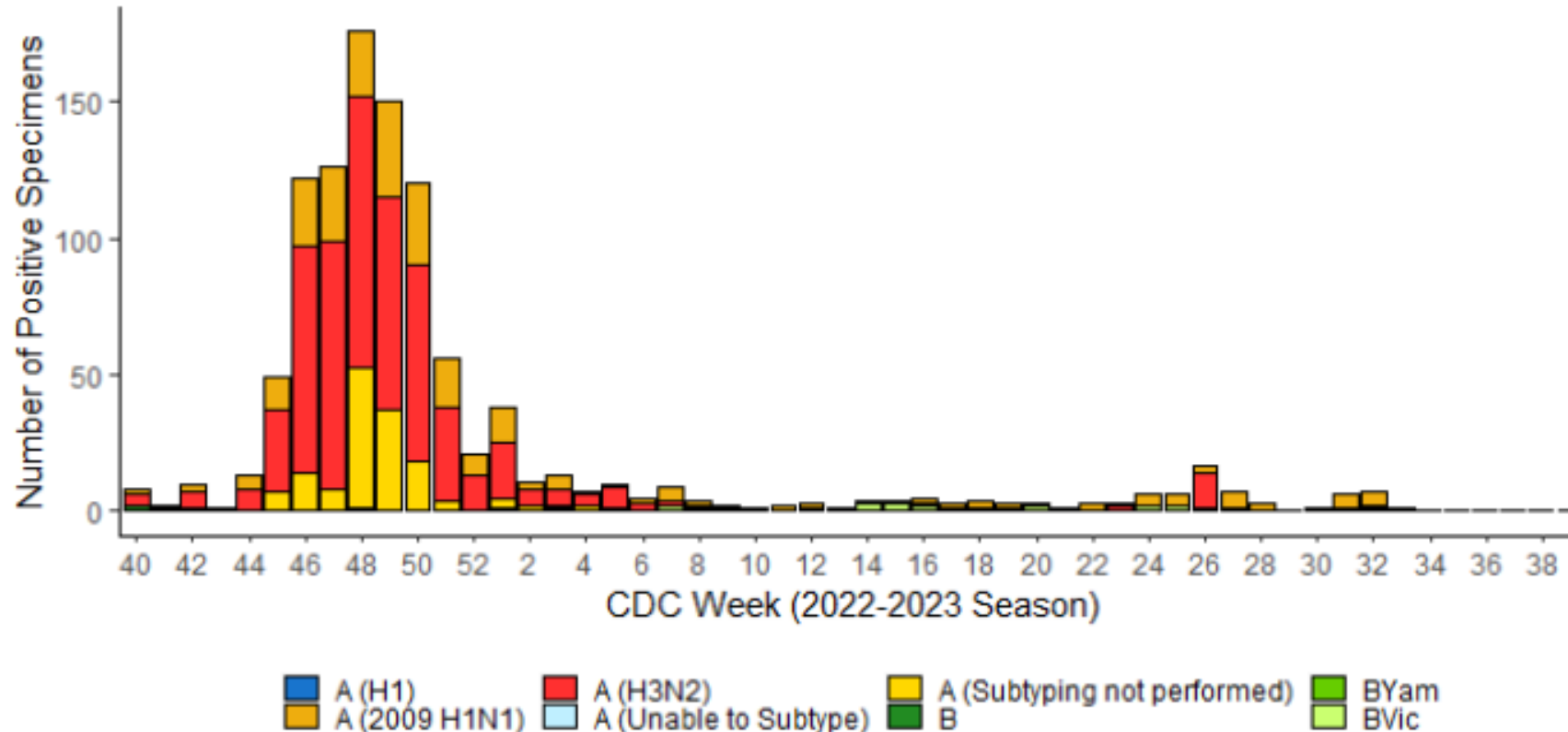
Influenza Positive Tests Reported to CDC, WA Commercial Laboratories

Figure 2: Influenza Positive Tests Reported to CDC, WA Commercial Laboratories



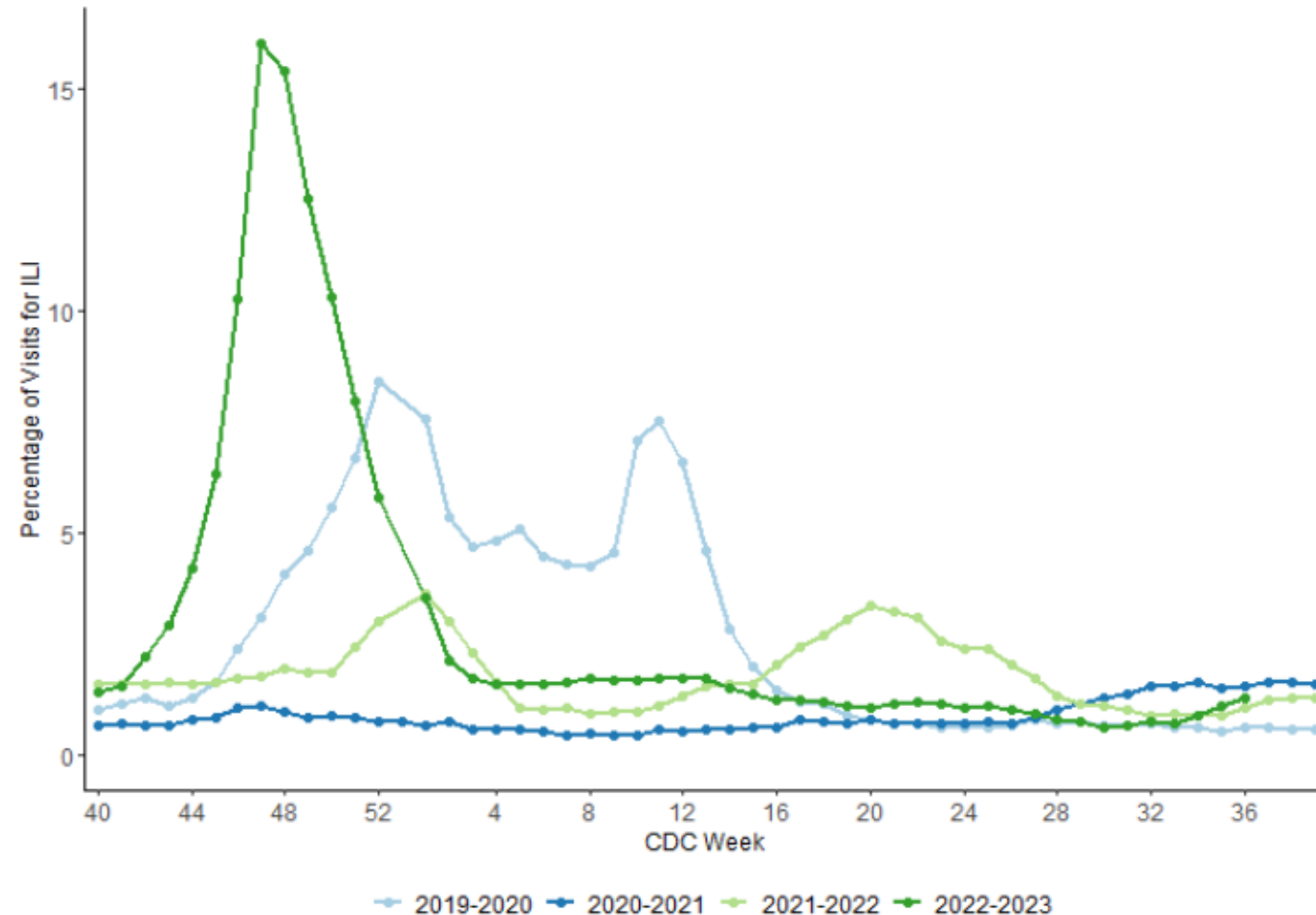
Influenza Positive Tests Reported to CDC, WA Public Health Laboratories

Figure 1: Influenza Positive Tests Reported to CDC, WA Public Health Laboratories



Syndromic Surveillance for Influenza-like Illness, Washington State 2019-2023

Figure 4: Syndromic Surveillance, Percentage of Hospital Visits for a Chief Complaint of ILI, or Discharge Diagnosis of Influenza, by CDC Week, Washington, 2019-2023



Reported Lab-Confirmed Influenza Associated Deaths Washington, 2022-2023

Age Group (in years)	Number of Deaths
0-17	5
18-29	2
30-49	15
50-64	44
65+	201
Total	267

2023-2024 Influenza Season

- Timing and Severity of Flu Season: Unknown
 - Influenza activity levels cannot be predicted from year to year.
- Best Preparation:
 - Vaccination
 - 3 preferentially recommended high-dose or adjuvanted flu vaccines for those 65+
- CDC: [Frequently Asked Influenza \(Flu\) Questions: 2023-2024 Season](#)

Flu Resources

- Washington State Flu Report:
 - https://doh.wa.gov/sites/default/files/filefield_paths/420-100-FluUpdate.pdf
- CDC Weekly Flu Report:
 - www.cdc.gov/flu/weekly
- Global Influenza Surveillance:
 - <https://www.who.int/teams/global-influenza-programme/surveillance-and-monitoring/influenza-updates/current-influenza-update>
- DOH Resources for Public Health and Healthcare Providers:
 - <https://www.doh.wa.gov/ForPublicHealthandHealthcareProviders/PublicHealthSystemResourcesandServices/Immunization/InfluenzaFluInformation>
- Communications Toolkit:
 - [Knock Out Flu Toolkit | Washington State Department of Health \(qa-doh-doh.pantheonsite.io\)](https://qa-doh-doh.pantheonsite.io)



DATA DASHBOARDS
MOLLY SIMONSON

Influenza Vaccination Data Dashboard

- Publicly available at <https://doh.wa.gov/data-statistical-reports/health-behaviors/immunization/influenza-vaccination-data>
- Updated weekly on Wednesdays
- More in depth than Respiratory Surveillance Dashboard
 - Includes data from current and past 3 flu seasons (2020-2021 through 2023-2024)
 - Can slice data by:
 - County
 - Region
 - Race/ethnicity
 - Age
 - Flu season

Respiratory Illness Data Dashboard

<https://doh.wa.gov/data-and-statistical-reports/diseases-and-chronic-conditions/communicable-disease-surveillance-data/respiratory-illness-data-dashboard>

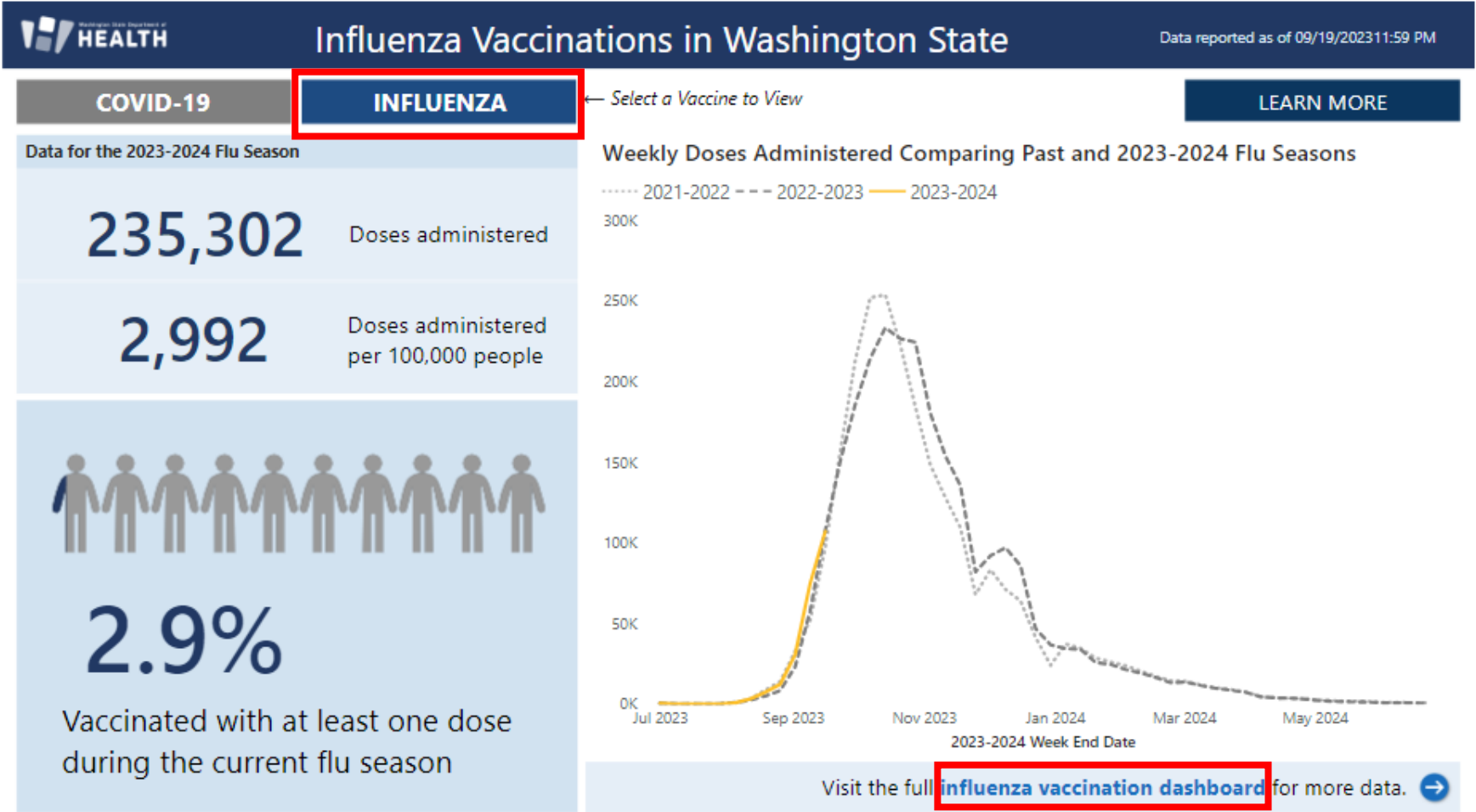
The screenshot shows the top navigation bar of the Washington State Department of Health website. On the left is the logo with the text "Washington State Department of HEALTH". On the right are links for "About Us", "Contact Us", and "Newsroom", along with a search box. Below these is a dark blue menu with categories: "You & Your Family", "Community & Environment", "Licenses, Permits, & Certificates", "Data & Statistical Reports", "Emergencies", and "Public Health & Provider Resources". At the bottom of the navigation bar is a breadcrumb trail: "Home | Data & Statistical Reports | Diseases And Chronic Conditions | Communicable Disease Surveillance Data | Respiratory Illness Data Dashboard".

Respiratory Illness Data Dashboard

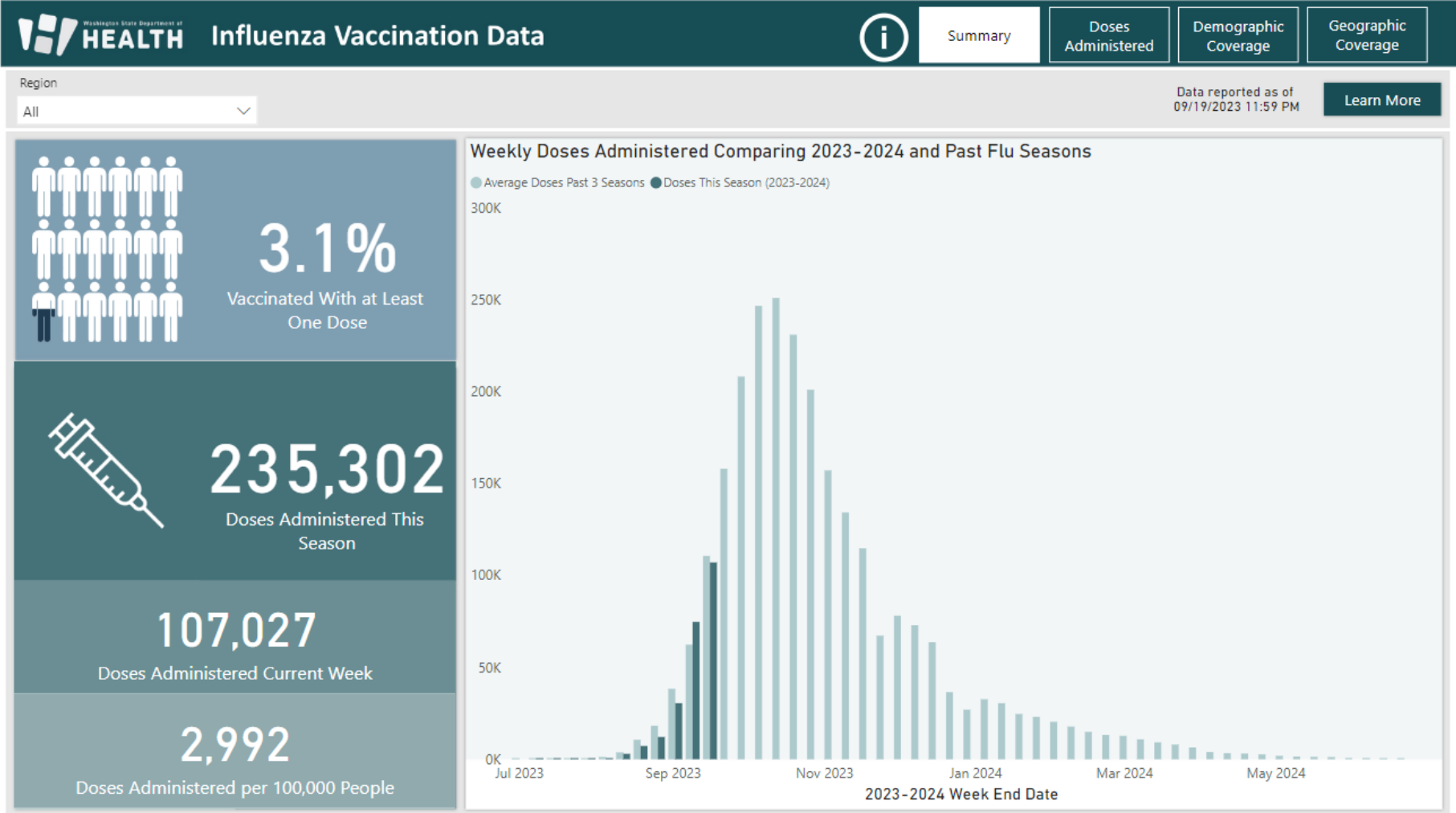
The screenshot shows a row of filter tabs: "Current Status", "Disease Activity", "Vaccination", "Hospital Use", and "Wastewater". The "Vaccination" tab is highlighted with a red border. Below the tabs are links for "Summary Data Tables", "Reports", and "Technical Notes".

Website Last Updated 12:50 PM 9/20/2023
Data shown as of previous day at 11:59 pm PT.

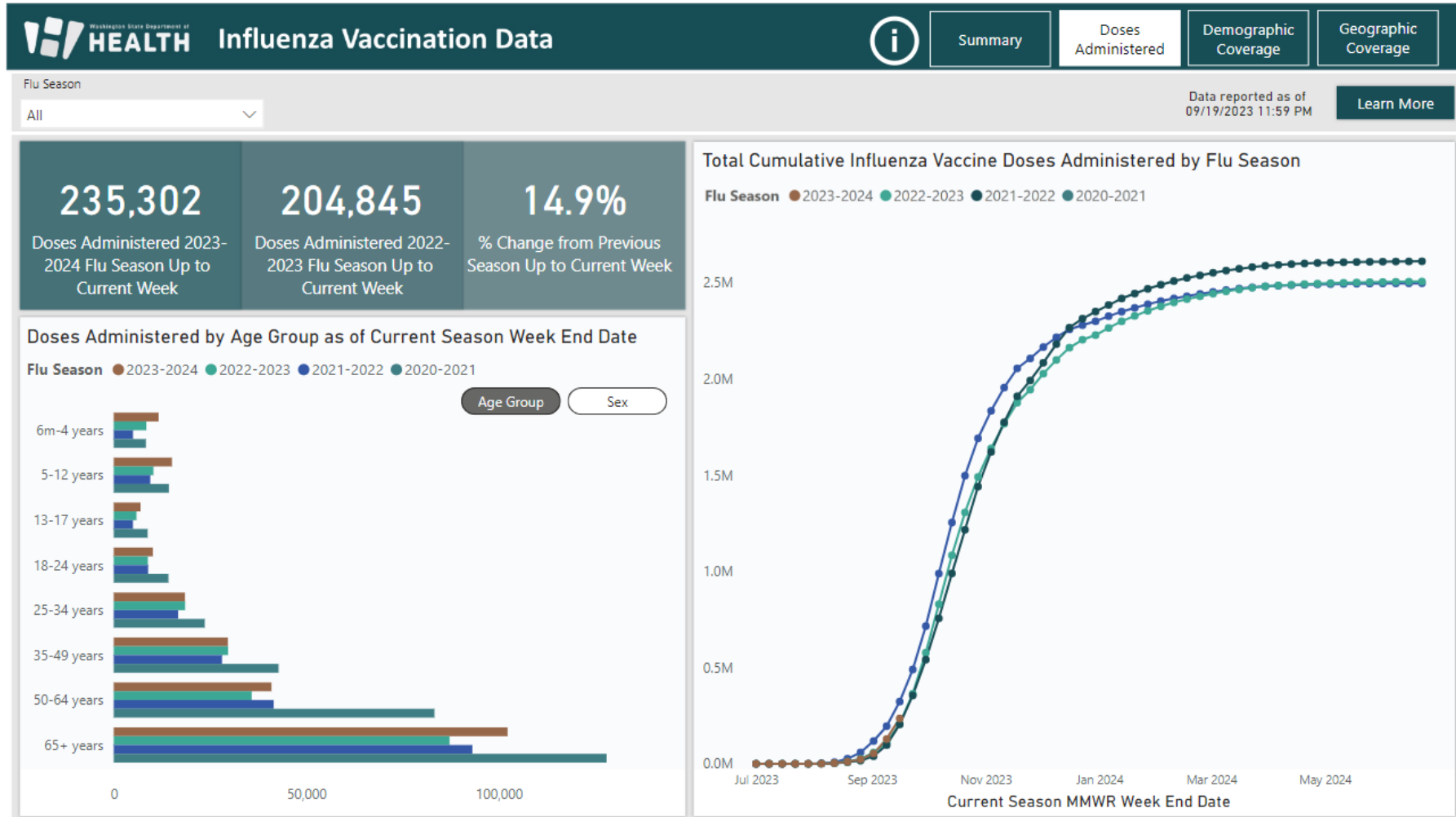
Respiratory Illness Data Dashboard



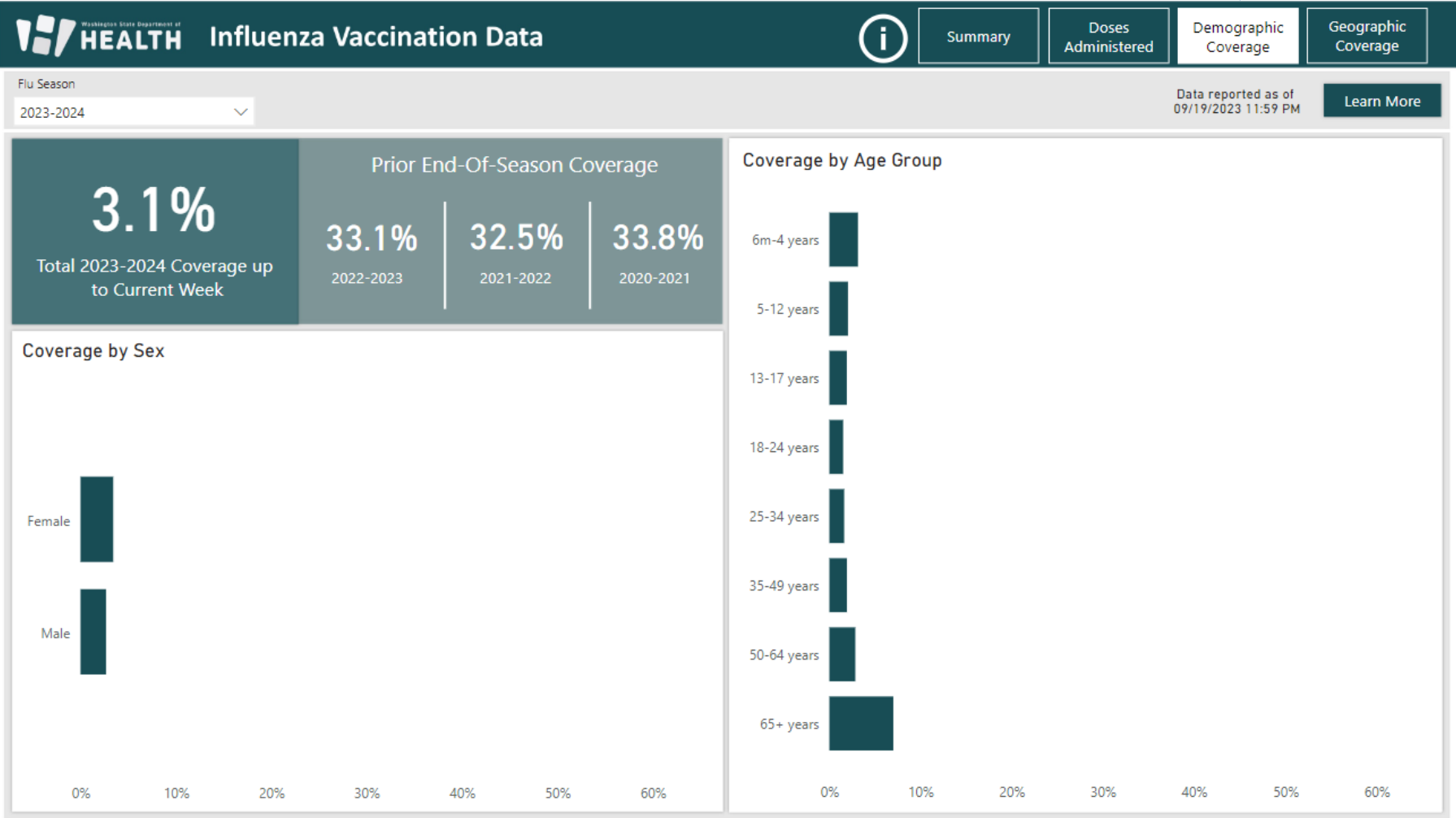
Summary



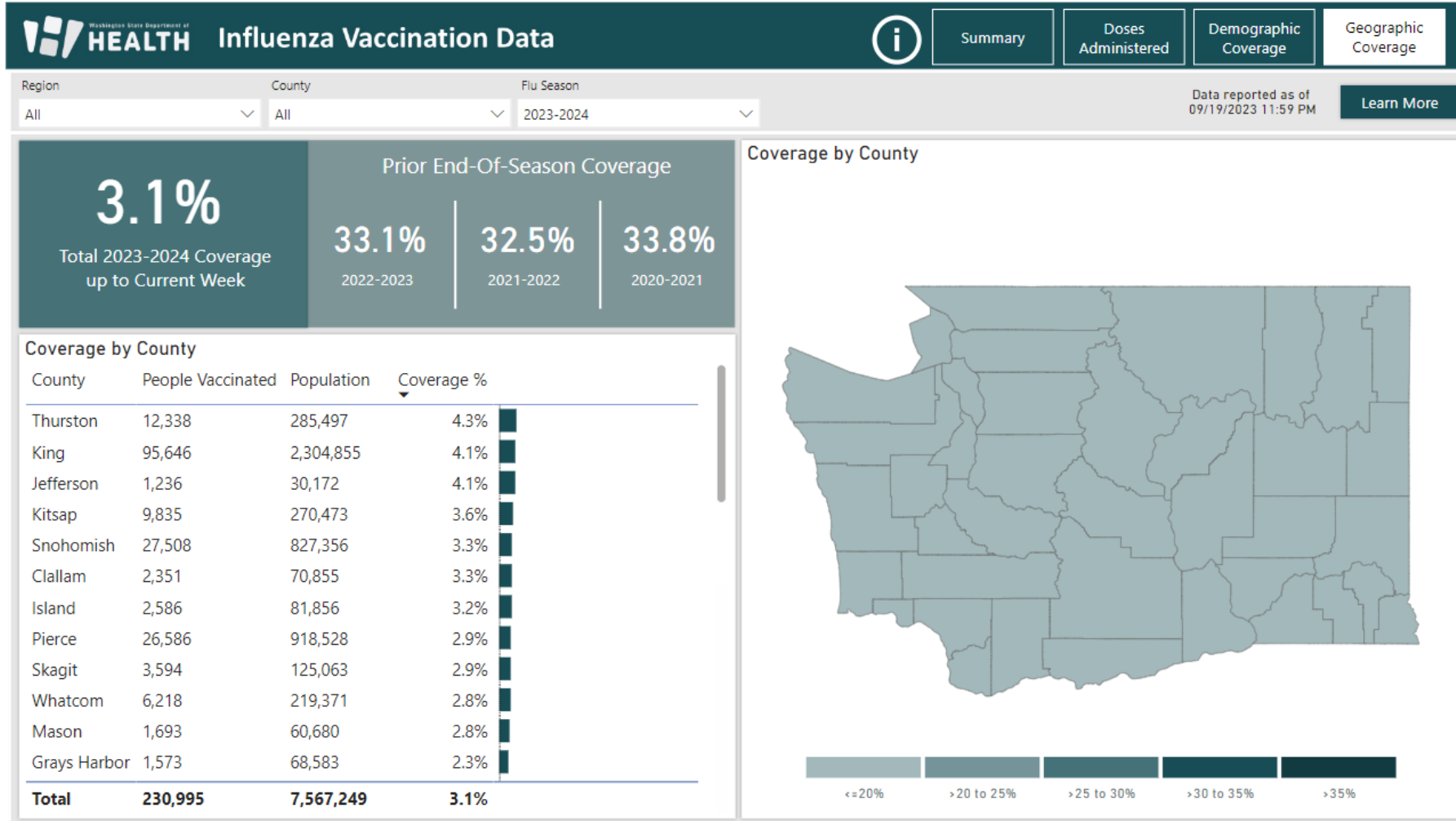
Doses Administered



Demographic Coverage



Geographic Coverage





FLU VACCINES, ALLOCATION, AND ORDERING
JACKI STOCKDALE

2023-2024 Vaccine Strains

Quadrivalent Egg-Based

- H1N1 = A/Victoria/4897/2022; slight change A/Victoria/2570/2019
- H3N2 = A/Darwin/9/2021; slight change A/Darwin/6/2021
- B Victoria = B/Austria/1359417/2021; No Change
- B Yamagata = B/Phuket/3073/2013; No Change

Quadrivalent Cell or Recombinant-Based

- H1N1 pdm09 = A/Wisconsin/67/2022; slight change A/Wisconsin/588/2019
- H3N2 = A/Darwin/6/2021; No Change
- B Victoria = B/Austria/1359417/2021; No Change
- B Yamagata = B/Phuket/3073/2013; No Change

2023-2024 State Supplied Childhood Flu Vaccines At A Glance

Characteristic	Fluzone Quad, PF	Fluzone Quad	FluLaval Quad, PF	FluMist Quad, PF	Flucelvax Quad, PF
Product Name	Fluzone® 0.5mL single dose (ages 6+ months) '22-23	Fluzone® 5.0mL MDV (ages 3+ years) '22-23	FluLaval® 0.5mL single dose (6+ months) '22-23	FluMist® single dose (ages 2-49 years) '22-23	Flucelvax® 0.5mL single dose (ages 6+ months) '22-23
Vaccine Name	Influenza, injectable, quadrivalent, preservative free	influenza, injectable, quadrivalent	influenza, injectable, quadrivalent, preservative free	influenza, live, intranasal, quadrivalent	Influenza, injectable, MDCK, preservative free, quadrivalent
Formulation	0.5mL single dose, pre-filled syringe, preservative free	5.0mL multi-dose vial, contains preservative	0.5mL single dose, pre-filled syringe, preservative free	0.2ml single dose sprayer, preservative free	0.5mL single dose, pre-filled syringe, preservative free
Manufacturer	Sanofi	Sanofi	GlaxoSmithKline	MedImmune	Seqirus
CPT/CVX Codes	90686/150	90688/158	90686/150	90672/149	90674/171
NDC Number	49281-0422-50	49281-0637-15	19515-0808-52	66019-0309-10	70461-0322-03
Age – Licensure	6+ mos	6+ mos	6+ mos	2-49 years	6+ mos
State Eligibility	6 mos-18 years	3-18 years	6 mos-18 years	2-18 years	6 mos-18 years
Storage	Refrigerated, 36°F - 46°F (2°C - 8°C)	Refrigerated, 36°F - 46°F (2°C - 8°C)	Refrigerated, 36°F - 46°F (2°C - 8°C)	Refrigerated, 36°F - 46°F (2°C - 8°C)	Refrigerated, 36°F - 46°F (2°C - 8°C)

Allocation of Flu Vaccines

Why does it vary when flu vaccines become available?

- McKesson receives the vaccine, notifies the CDC.
- CDC allocates doses to all awardees.
- Need sufficient supply of vaccine for majority of providers to benefit.

Childhood Product	NDC	Manufacturer	Doses PreBook	Doses Allocated	% allocated
0.5mL Flucelvax Availability (6 months - 18 years):	70461-0323-03	Seqirus	15,000	15,000	100%
0.5mL FluLaval Availability (6 months - 18 years):	19515-0814-52	GSK	285,000	285,000	100%
0.2mL FluMist Availability (2 - 18 years):	66019-0310-10	AstraZeneca	20,000	18,480	92.4%
0.5mL Fluzone Availability (6 months - 18 years):	49281-0423-50	Sanofi Pasteur	285,000	228,630	80.2%
5.0mL Multi-Dose Vial Fluzone Availability (3 - 18 years):	49281-0639-15	Sanofi Pasteur	15,000	15,000	100.0%

Seasonal and Current Flu Vaccine Allocation

Allocation as of September 28th

Brand	Seasonal Doses	Allocated Doses	Ordered Doses	Available Doses
FluLaval 0.5mL PFS 6+ months	285,000	285,000	67,660	217,340
Fluzone 0.5mL PFS 6+ months	285,000	228,630	72,990	155,640
Fluzone 5.0mL MDV 3+ years	15,000	15,000	3,380	11,620
Flucelvax 0.5mL PFS 6+ months	15,000	15,000	6,300	8,700
FluMist 0.2mL Sprayer 2-49 years	20,000	18,480	8,730	9,750
TOTAL	620,000	562,110	159,060	403,050

Flu Products Available through the Childhood Vaccine Program

Vaccines Eligible for 6 months – 18 years

- Fluzone 0.5mL, preservative free, pre-filled syringe
- FluLaval 0.5mL, preservative free, pre-filled syringe
- Flucelvax 0.5mL, preservative free, pre-filled syringe, egg-free

Vaccines Eligible for 2 years – 18 years

- FluMist 0.2mL, live attenuated, sprayer

Vaccines Eligible for 3 years – 18 years

- Fluzone 5.0mL, multi-dose vial

Flu Vaccine Dosages

Fluzone 0.5mL OR FluLaval 0.5mL pre-filled syringe	Fluzone MDV (0.5mL)	FluMist 0.2mL	Flucelvax 0.5mL pre-filled syringe (Egg-Free)
<ul style="list-style-type: none">• 6 months-18 years• Pregnant Women	<ul style="list-style-type: none">• 3-18 years	<ul style="list-style-type: none">• 2-18 years	<ul style="list-style-type: none">• 6 months-18 years• Pregnant Women

*The 0.5mL pre-filled syringe is considered a full dose. Do not give 0.25mL as this is not a complete dose for the 6-35 month

BOTH Fluzone and FluLaval pre-filled syringes contain 0.5mL, either can be used interchangeably and for ages 6 months-18 years

Flu Vaccine and WA Thimerosal Regulations

- A preservative called thimerosal keeps vaccines from becoming contaminated
- Thimerosal has trace amounts of ethylmercury (a type of mercury)
- Multi-dose flu vaccines is the only vaccine in the Childhood Vaccine Program that contains thimerosal
- Washington State Law (RCW 70.95M.115): restricts the use of vaccines containing more than trace amounts of mercury (thimerosal) in pregnant women and children under 3
- Fluzone 0.5L, FluLaval 0.5mL **OR** Flucelvax 0.5mL pre-filled syringes should be used for children under 3 years of age and pregnant people

Flu Vaccine Ordering Reminders

- ✓ Fluzone multi-dose vial (MDV) is not a required vaccine for providers to utilize this season.
- ✓ Do not order the MDV for use in children under 3 years of age.
- ✓ Don't place vaccine orders as urgent.
- ✓ Flucelvax is egg-free.
- ✓ Why it is recommended to keep only a month of supply on hand.

Resources

Thimerosal Law: <https://doh.wa.gov/you-and-your-family/immunization/vaccine-safety/thimerosal-laws-washington#:~:text=However%2C%20as%20a%20precautionary%20measure,of%20outbreak%20or%20vaccine%20shortage>

doh.wa.gov → You & Your Family → Immunization → Vaccine Safety → Thimerosal Law in Washington

Flu Information for Public Health and Healthcare: <https://doh.wa.gov/public-health-healthcare-providers/public-health-system-resources-and-services/immunization/influenza-flu-information>

doh.wa.gov → For Public Health & Health Care Providers → Public Health System Resources and Services → Immunization → Influenza (Flu) Information

Flu Information General: <https://doh.wa.gov/you-and-your-family/immunization/diseases-and-vaccines-can-prevent-them/influenza-flu-vaccine>

doh.wa.gov → You & Your Family → Immunization → Diseases And Vaccines → Influenza (Flu) Vaccine



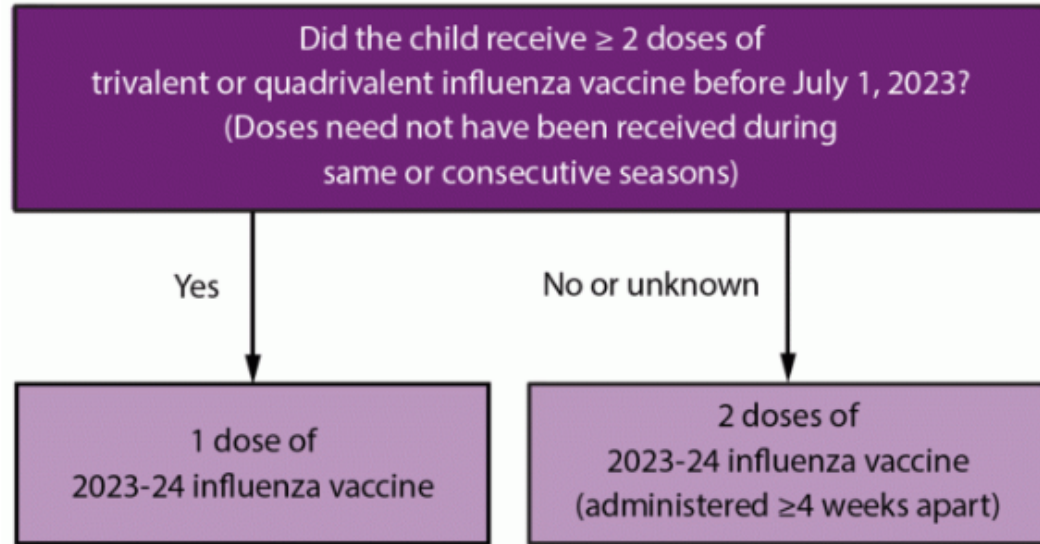
FLU VACCINE RECOMMENDATIONS TRANG KUSS

Updates to Guidelines for Influenza Vaccine Administration to People with Egg Allergy

- Most influenza vaccines are produced with an egg-based manufacturing process and contain a small amount of egg proteins
 - Additional safety measures were *previously recommended* for administration of egg-based influenza vaccine to people who had a history of severe allergic reactions to egg
- **UPDATE** People with egg-allergy may receive any influenza vaccine (egg-based or non-egg based) that is otherwise appropriate for their age and health status; additional safety measures are no longer recommended
- All vaccines should be given in settings where allergic reactions can be recognized and treated quickly.

[2023-2024 Recommendations for Influenza Prevention and Treatment in Children: An Update for Pediatric Providers](#)

FIGURE. Influenza vaccine dosing algorithm for children aged 6 months through 8 years* — Advisory Committee on Immunization Practices, United States, 2023–24 influenza season



* Children aged 6 months through 8 years who require 2 doses of influenza vaccine should receive their first dose as soon as possible (including during July and August, if vaccine is available) to allow the second dose (which must be administered ≥4 weeks later) to be received, ideally, by the end of October. For children aged 8 years who require 2 doses of vaccine, both doses should be administered even if the child turns age 9 years between receipt of dose 1 and dose 2.

[Prevention and Control of Seasonal Influenza with Vaccines: Recommendations of the Advisory Committee on Immunization Practices — United States, 2023–24 Influenza Season | MMWR \(cdc.gov\)](#)

Flu Vaccine Administration Reminders

Date of Birth:	11/07/2008	Age:	10 yrs				
Guardian:		Status:	Inactive				
Vaccination Summary							
Vaccinations outside the ACIP schedule are marked with an 'X'.							
Vaccine	1	2	3	4	5	6	7
DTaP/DTP/Td	01/16/2009 10 weeks	03/17/2009 4 months	05/20/2009 6 months	08/24/2010 21 months	11/21/2013 5 years		
OPV/IPV	01/16/2009 10 weeks	03/17/2009 4 months	05/20/2009 6 months	11/21/2013 5 years			
MMR	11/09/2009 12 months	X 11/21/2013 5 years					
Hib	01/16/2009 10 weeks	03/17/2009 4 months	05/20/2009 6 months	08/24/2010 21 months			
Hep A	11/21/2013 5 years	04/23/2015 6 years					
Hep B - 3 Dose	11/07/2008 0 days	01/16/2009 10 weeks	04/23/2015 6 years				
Varicella	11/09/2009 12 months	X 11/21/2013 5 years					
Rotavirus	03/17/2009 4 months						
Influenza	11/19/2009 12 months	11/18/2010 24 months	X 03/06/2012 3 years	11/18/2013 5 years	12/15/2015 7 years	11/21/2016 8 years	11/05/2018 9 years
Pneumo (PCV)	01/16/2009 10 weeks	03/17/2009 4 months	05/20/2009 6 months	03/06/2012 3 years			
Novel Influenza H1N1-09	11/19/2009 12 months						

- Injectable flu vaccines can be given at the same time as other vaccines
- If FluMist is being used, give at the same time as other live or inactivated vaccines
 - If not given at the same time as another live vaccine (MMR or varicella), wait at least 4 weeks (or 28 days) between live vaccines
 - If less than 4 weeks between live vaccines, repeat the invalid dose 28 days later

[ACIP Timing and Spacing Guidelines for Immunization | CDC](#)

Flu Vaccine Administration Reminders, cont.

- When two doses are required in a season, can mix and match flu vaccine brands.
- The maximum number of doses drawn from a multidose vial is specified in the package insert and should not be exceeded.
- Residual product must be discarded regardless of the remaining volume in the vial.
- A 0.5-mL unit dose of any inactivated flu vaccine should not be split into 2 separate 0.25-mL doses.



Image source: [CDC Digital Media Toolkit](#)

[ACIP Timing and Spacing Guidelines for Immunization | CDC](#)

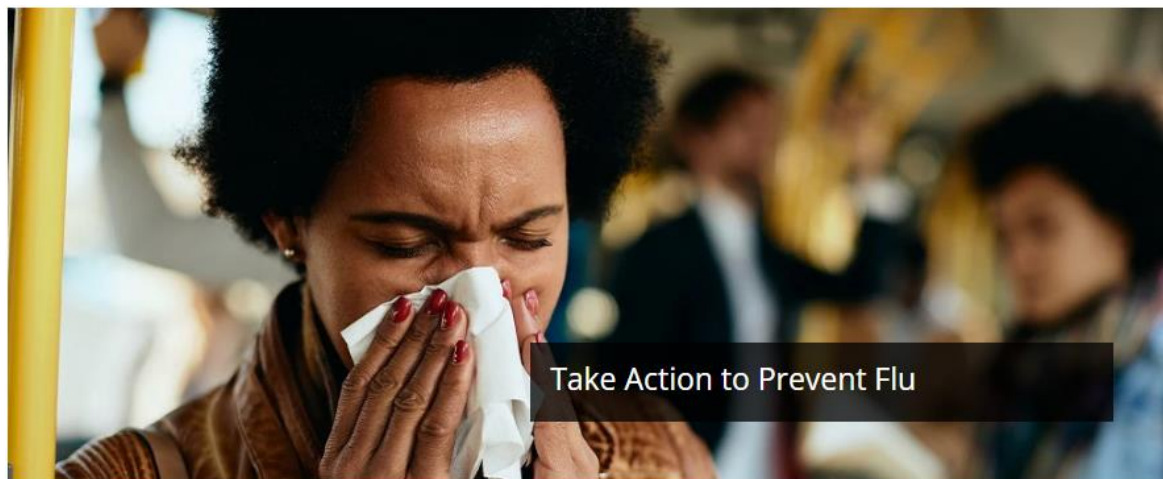
Influenza Vaccination of Persons Aged ≥ 65 Years

- Adults aged ≥ 65 years should preferentially receive any one of the following higher dose or adjuvanted influenza vaccines:
 - Quadrivalent high-dose inactivated influenza vaccine (HD-IIV4),
 - Quadrivalent recombinant influenza vaccine (RIV4), or
 - Quadrivalent adjuvanted inactivated influenza vaccine (aIIV4).
- If none of these three vaccines is available at an opportunity for vaccine administration, then any other age-appropriate influenza vaccine should be used.
- Vaccination of older adults in July and August should be avoided unless later vaccination might not be possible.
 - Due to potential waning of immunity.

[Clinical Outreach and Communication Activity Webinar Preparing for the Upcoming Respiratory Virus Season: Recommendations for Influenza, COVID-19, and RSV Vaccines](#)

Flu Forecast and Vaccination Resources

[Prevent Seasonal Flu | CDC](#)



- Flu forecast not available in WAIS yet
- [Vaccines.gov - Find COVID-19 and flu vaccine locations near you](#)
- [Care-a-Van Mobile Health Services | Washington State Department of Health](#)
 - 6 months and older
 - COVID-19
 - Flu
 - Childhood vaccines
 - Blood pressure and glucose screening

Resources

- [ACIP Influenza Vaccine Recommendations | CDC](#)
- [CDC webinar Preparing for the Upcoming Respiratory Virus Season: Recommendations for Influenza, COVID-19, and RSV Vaccines for Older Adults](#)
- [Immunization Schedules for Healthcare Professionals | CDC](#)
- [Flu Vaccines at a Glance \(wa.gov\)](#)
- [Ask the Experts: Influenza Vaccines \(immunize.org\)](#)
- [Flu Overview | Washington State Department of Health](#)
- [2023-24 Flu Updates Webinar | Washington State Department of Health](#)



FLU FREE WASHINGTON CAMPAIGN
SAMANTHA SEAMAN

flu free

WASHINGTON



DOH 2023-24 FLU CAMPAIGN & MATERIALS

- Office of Public Affairs and Equity
- Health Promotion and Education

Communication Goals



Awareness

The flu can cause serious illness in anyone, especially at-risk individuals.



Education

The flu vaccine is your best defense against serious illness from the flu.

The flu vaccine is widely available, no cost under most insurances, no cost for children under 19 and can be received at the same day as many other vaccines.



Action

Get vaccinated before the end of October (but late is better than never)

Go to [FluFreeWA.org](https://www.flufreeWA.org) to learn more

Priority Populations

Flu illness affects every age and demographic in WA state, but the following populations are at high risk for negative health outcomes due to flu:

- Adults aged 65+
- Children ages 6 months through 18 years
- Pregnant people
- Persons of any age with underlying health conditions

New Branding

flu free
WASHINGTON

WASHINGTON
sin gripe



FluFreeWA.org
WASinGripe.org



2023-24 Paid Campaign

- September – December
- Facebook & Instagram:
 - Static ads (English, Spanish, Traditional Chinese, Simplified Chinese, Vietnamese, Russian)
 - Video ad (English + Spanish)
- Web Banners:
 - English & Spanish
- Radio:
 - English & Spanish

flu free family flu free
work flu free gym
flu free game days
flu free school flu
free camping flu free
friends flu free
everything

flu free
WASHINGTON

FluFreeWA.org - WASinGripe.org

Updated Partner Toolkit:

- Blog Posts Template
- Drop-in Articles
- Social Media Post language
- Email & Email Signature Template

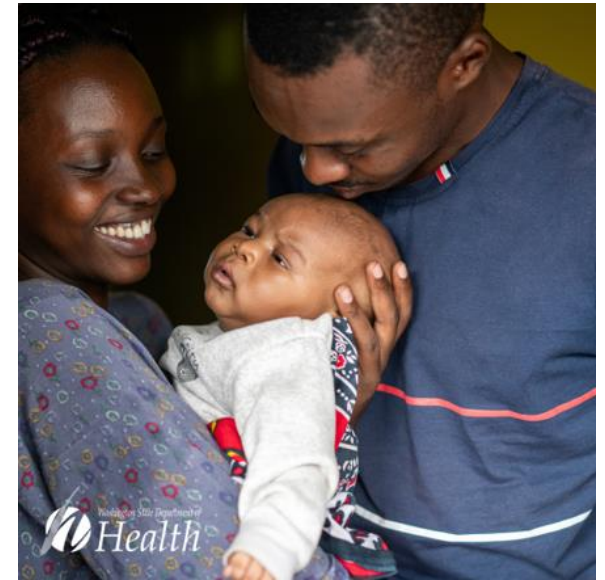
Flu Free Workplace Toolkit

Preventing Respiratory Illnesses in Adult Family Homes

Flu Free School Toolkit

Social Media Posts

- Facebook, Twitter & Instagram posts
- Focus on priority populations:
 - Adults 65+
 - Guardians of children
 - Pregnant people
 - Immunocompromised
 - Anyone who lives with or works with the above
- Posts September through January



Contact

Flu Health Educators:

Samantha Seaman

Samantha.Seaman@doh.wa.gov

Robert Rankin

Robert.Rankin@doh.wa.gov

Obtaining Continuing Education

- Continuing education is available for nurses, medical assistants, pharmacists and pharmacy technicians
- There is no cost for CEs
- Expiration date is 01/05/24
- Successful completion of this continuing education activity includes the following:
 - Attending the entire live webinar or watching the webinar recording, and completing the evaluation
 - **On the evaluation, please specify which type of continuing education you wish to obtain**
- **Please note:** CE certificates are NOT generated after evaluation completion—CE certificates will be sent by DOH via email within a few weeks after evaluation completion
- If you have any questions about CEs, contact Trang Kuss at trang.kuss@doh.wa.gov

Questions?





To request this document in another format, call 1-800-525-0127. Deaf or hard of hearing customers, please call 711 (Washington Relay) or email civil.rights@doh.wa.gov.

DOH 348-1003