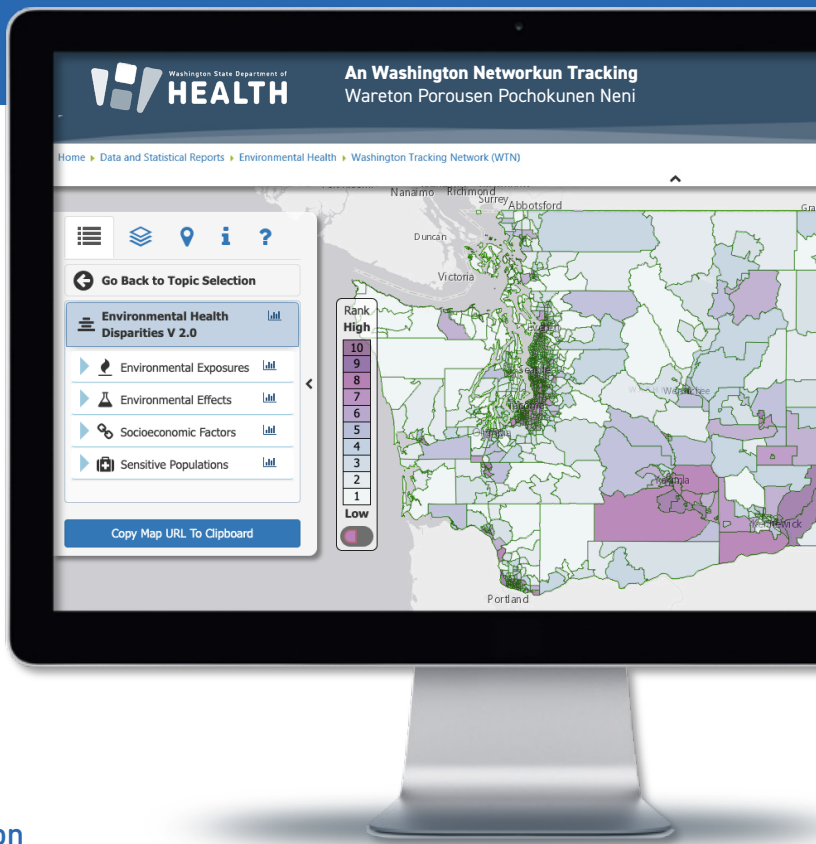


Mappun Sokofesenin Neni non Washington

Ewe Mappun Sokofesenin Neni non Washington ew pisekin anganfengen an epwe anonofengeni neniachkewe non unusen Washington State faniten an epwe kuna sokofesenin pochokunen nenierkewe.

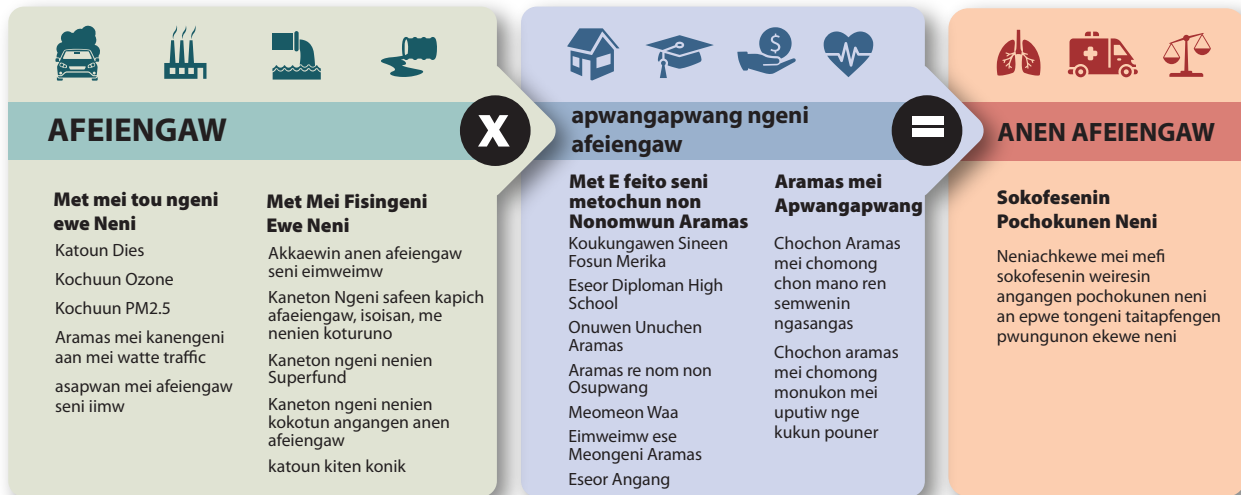
Ewe map mei pacheta won an Washington Tracking Network meren Nenian pisekin angangen map, mine mei pwarano tetenitiwen pochokunen met mei fisita meren pochokunen aramas me nonomwun aramas non neniachkewe. Mwokutun aramas non neniachkewe, mei pachenong met mei fifis, ier/ ika iir mwan ika fefin, me ar choo/ me ia re feitoseni mei pwan nom.

Sokofesinin pochokunen aramas mei riringeni met mei fisita meren nonomwun aramas, nenierkewe, me pwusin kokotun inisin aramas. Ewe mappun EHD e aea ew napanap mei "ochuu tongenian" mine mei pwarano an kokotun inisin aramas, nonomwur, me nenierkewe wewefengen. Ei anapanap mei esina sokofesenin metoch mei ririfengen me met ese imwuno. Ew anapanap mei ochuu tongenian mei anapano anen an ekewe neni ika aramas mei weiresngenir metoch repwe tongeni angang aninis



Sokofesenin Pochokunen Neni non Washington

Afeiengaw X Apwangapwang = Anen Afeiengaw



Kaero Seni Anapanap

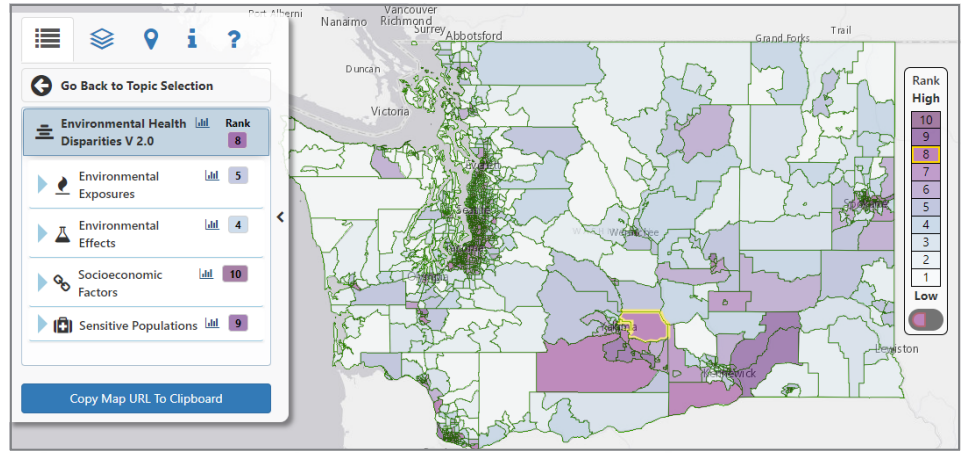
Neniachkewe, agencyn non mwuu, sukun, me ekoch aramas ra nounou ewe map ar repwe anonofengeni me anapanapa ifa ussun an ekewe kapich mei afeiengawa nonomweochun ekoch neniachkewe me non ewe state.

Ewe map mei awora minafon ekiek ren ian mwuu epwe tongeni aninisinong me ia ar repwe ekisano afeiengawen pochokunen neno non neniachkewe me non Washington, an meinisin repwe tongeni angei aninisin nimeochun asapwan, nimeochun konik, me neni mei pochokun.

Iei a wor chon nounou ewe map ne fori ar kokot non sokopaten kinikinin non unusen ewe state. Nounoun ei map iei a pachenong ar awatenoi aninisin moni faniten green energy ngeni neniachkewe rekon feiengaw, anisi neniachkewe ar repwe nounou grants, me neniachkewe ar repwe anganga mokutun eochunon pochokuner me pochokunen nenierkewe.

Tetenitiwen Euclean non Neniachkewe

Ewe map mei pwarano kochuun afeiangawen pochokunen neni me non neniachkewe mei anongonong won 19 metoch. Neniachkewe a tik pwun census tracts. Napengeni ekewe census tracts mei ukukun 5,000 aramas nge mei tongeni epwe seni 2,000 ngeni 8,000 aramas. Neniachkewe mei anonofengen non ar nounou nampa 1-10.



Foruta non Angangfengen

Ewe map a foruta seni an ofesin non neniachkewe, sukun me mwuu angang fengen non ukukun ruu ier. Porous non ewe map a faitoseni ar rongorong ngeni mwiih non neniachkewe faniten sokofesenin afeiangawen ekewe neni ren metochun non ekewe neni non unusen ewe state. Chochon neniachkewe ra awora euclean sokun awewe ren nonomwur ngeni pochokunen ika apwangapwangen nenierkewe. Ekei porous mei anisi foforon ewe map.

'Om zip code, moni tonong, me om choo ika om tongeni foosun merika esapw ina met pochokunom e nongonong won. Uwa mochen epwe nimeoch asapwan faniten ai famini me monun unukui mei riafou faniten ar mwi. Semirit ururun repwe marita non neni mei tumwun, neni ese watte nimengawan.'

— Rosario Maria Medina
chochon Longtime South Seattle
Chon Ota ewe Duwamish River Cleanup Coalition

Mwokutuno non Angang Fengen

Ewe mappun EHD ew pisekin aninis mei manaw; kich mei sopwei ne ekewini me eochuweno, non ach sopwei ne pachenong memefin chochon neniachkewe me minafon porous. Sia pwapwa ach sia rong meremi ifa esin an ewe map tongeni anisikemi. Ika pwun e wor om kapaseis, noninen, ika mefom ren anen ach sipwe tongeni eochuweno ewe mappun EHD, kose mochen esinengenikich. Kich mei awora ach fansoun churuk me kait ren nounoun ewe map ika awewen porous won ewe map, iwe sia men pesengenikemi ami oupwe aporousato ifa usun ami nounou ewe map.

[Emailinikich \(EHDmap@doh.wa.gov\)](mailto:EHDmap@doh.wa.gov)

[Nongeni achewe peichen ewe map \(https://doh.wa.gov/EHDmap\)](https://doh.wa.gov/EHDmap)



DOH 334-426 | June 2024 Chuukese

Ika ke mochen kopwe nounou ei taropwe non ew sokkun nikinikin, kokori 1-800-525-0127. Ren ekkewe kastomer ir mei pung seninger ika weires ar repwe rongorong pworous, kose mochen kokori 711, (Washington Relay) ika email ngeni doh.information@doh.wa.gov.

