

State Health Assessment: Community Partners Assessment

CEPEA/ Assessment & Health Equity





Land Acknowledgement

We would like to acknowledge the ancestral land in which the state of Washington operates on. We honor and thank the ancestors, leaders and stewards of these lands and waters since time immemorial. We recognize that this land acknowledgement is one small step toward true allyship and we commit to uplifting the voices, experiences, and histories of the Indigenous people of this land and beyond.



Table of Content

State Health Assessment

Importance of Equity

Methodology

CPA Findings

Demographics/Characteristics/Populations

Topic areas of focus

Organizations Accountability

Commitment to Equity

Essential Public Health Services

Data Access & Systems

General Capabilities and Strategies

Policy, Advocacy, and Communication

Gaps

State Health Assessment

Community Partner Assessment

An assessment process that looks at community partners systems, processes, and capacities and their collective capacity as a network/across all community partners to address health inequities.

Community Status Assessment

It quantitatively describes the status of the community, including health outcomes, health behaviors, social determinants of health, and systems of power, privilege, and oppression, and across all these variables, existing inequities.

Community Context Assessment

The Community Context Assessment (CCA) is a qualitative data assessment tool aimed at harnessing the unique insights, expertise, and perspectives of individuals and communities directly impacted by social systems to improve the functioning and impact of those systems.

Importance of Equity

Equity is the journey, it is the method, not a check box or a destination. Working to ingrain equity into how public health issues are addressed moves away from the deficit approach of what organizations, communities and groups of people are doing wrong and focusing on the positives of these entities and what they can achieve individually and in collaboration with others.



Importance of Equity within Partnerships, Collaborations and Networks within Public Health Practice

PUBLIC HEALTH DEPARTMENT

Organizational Priorities and Values

- Includes health equity as a core value
- Conducts hiring from communities experiencing inequities
- Leaders prioritize and value health equity

Work Unit Practices

- Allocates staff time for health equity
- Adapts approaches to address inequities
- Designs programs and policies to address health equity
- Implements systems to track progress

Staff Skills

- Describe disparities and causes of inequities
- Describe how one's work advances health equity
- Identify how evidence-based approaches advance equity
- Identify policies to address social determinants

PARTNERING ORGANIZATIONS AND NETWORKS

- Explicitly state health equity as a shared priority in collaborations
- Involve those affected by inequities in processes
- Share decision making and resources among partners

HEALTH EQUITY IN PUBLIC HEALTH PRACTICE

The CPA looked at collaborations across the state seeking to learn more about our capacity as a system. It asked about:



Identity

- 1) Demographics
- 2) Topic Areas
- 3) Organization Structure



Infrastructure

- 4) Ten Essential Public Health Service Capabilities
- 5) Data Access & System



Equity

- 6) Community Engagement Practices
- 7) Policy, Advocacy, & Communications Efforts
- 8) Commitment to Equity

Prevailing Themes

Theme #1

Participatory decision process & a focus on community feedback

Theme #2

Community Engagement

Theme #3

Access to Resources

Theme #4

Education on political efficacy

Theme #5

Providing support where needed, flexible funding.

Theme #6

Focus on upstream, prevention efforts



Methodology



Partnership	Gov Office	DOH	Non-Profit	Other Gov't
American Indian Health Commision				
Poverty Reduction Workgroup				
Governor's Interagency Board for Health Justice & Equity				
Commission on African American Affairs				
WA State Commission on Asian Pacific American Affairs				
Development Disabilities Council				
Environmental Justice Council				
Commission on Hispanic Affairs				
WA State LGBTQ Commission				
Public Health Advisory Board				
Birth Equity Project				
Pacific Island Board of Health				
The Washington State Association of Local Public Health Officials				
Our Valley Our Future/ Neurto Valle Neustro Futuro				
Community Health worker Coalition for Migrants and Refugees				
Community Health Worker Collaborative				
Health Equity Zones				
The Community Collaborative				
The Health Workforce Council				

Top 5 Populations Served

1 Black/African American

2 American Indian/Alaskan Native

3 Communities Experiencing Health Inequities

4 Public Health Workforce

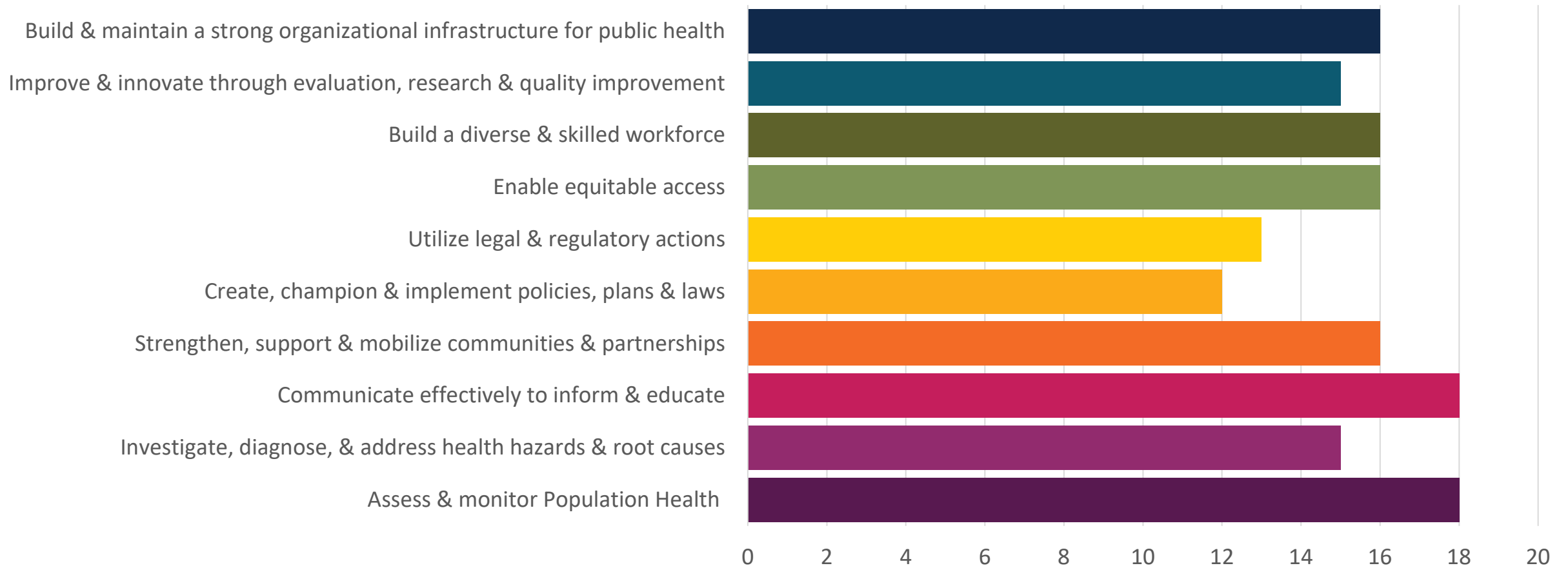
5 Healthcare Workforce



Topic Areas of Organizational Focuses

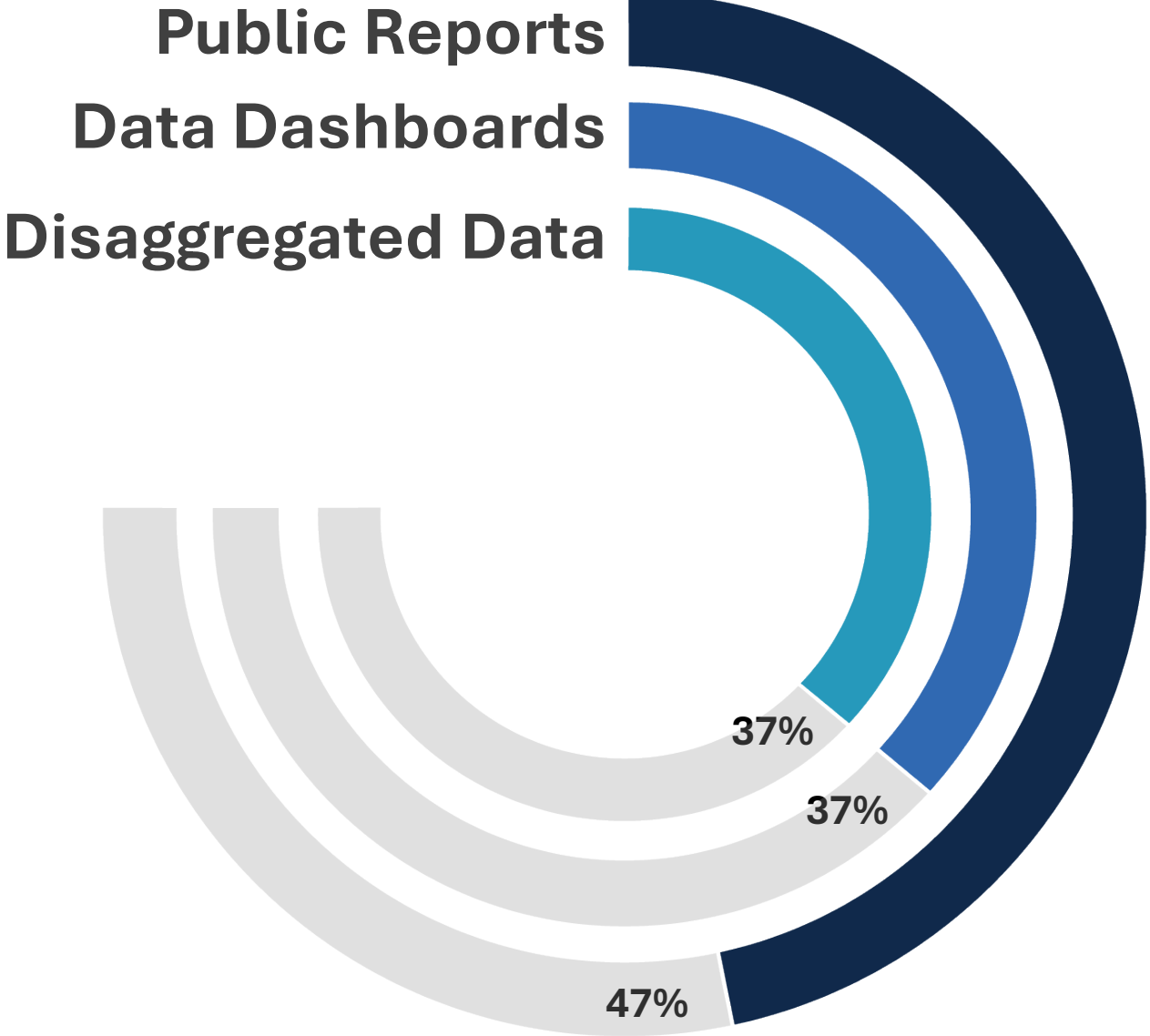


Organizations and the 10 Essential Public Health Services

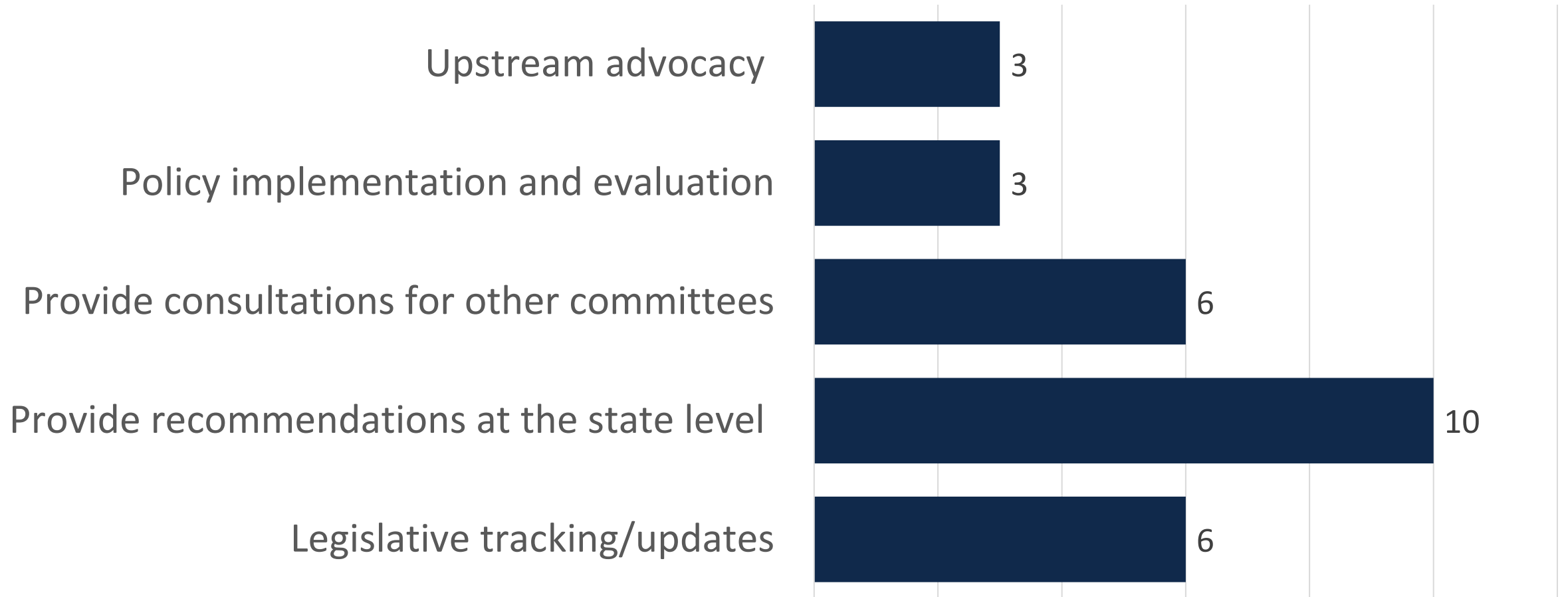


Data Access & Systems

Several collaborating entities did not disclose data to the public. However, they utilized internal administrative data to inform their decision-making purposes.

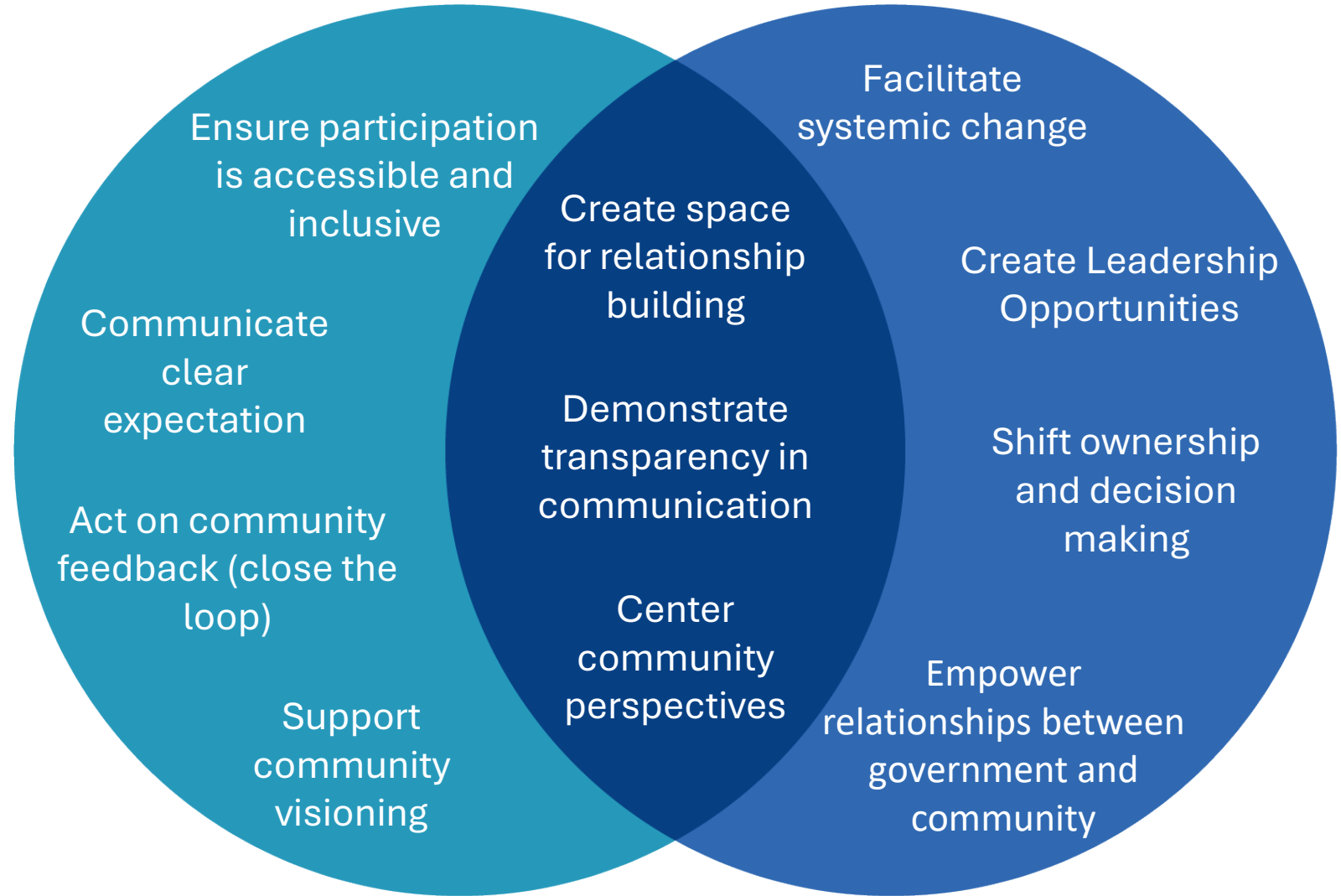


Policy and Advocacy



Community Engagement Practices

What does it mean to meaningfully support community leadership?



Community Engagement Practices



- 15 partnerships provided routes for community feedback/input.
- 16 partnerships offered resources, support to communities, and created connections.
- 12 of the partnerships had community members encompass the steering committees or the commissioners.
- No notes on community led evaluation or assessment of current policies or regulations.

With a focus on health equity at the state level it is important to remember...

"What we must do is commit ourselves to some future that can include each other and to work toward that future with the particular strengths of our individual identities. And in order for us to do this, we must allow each other our differences at the same time as we recognize our sameness."

-Audre Lorde

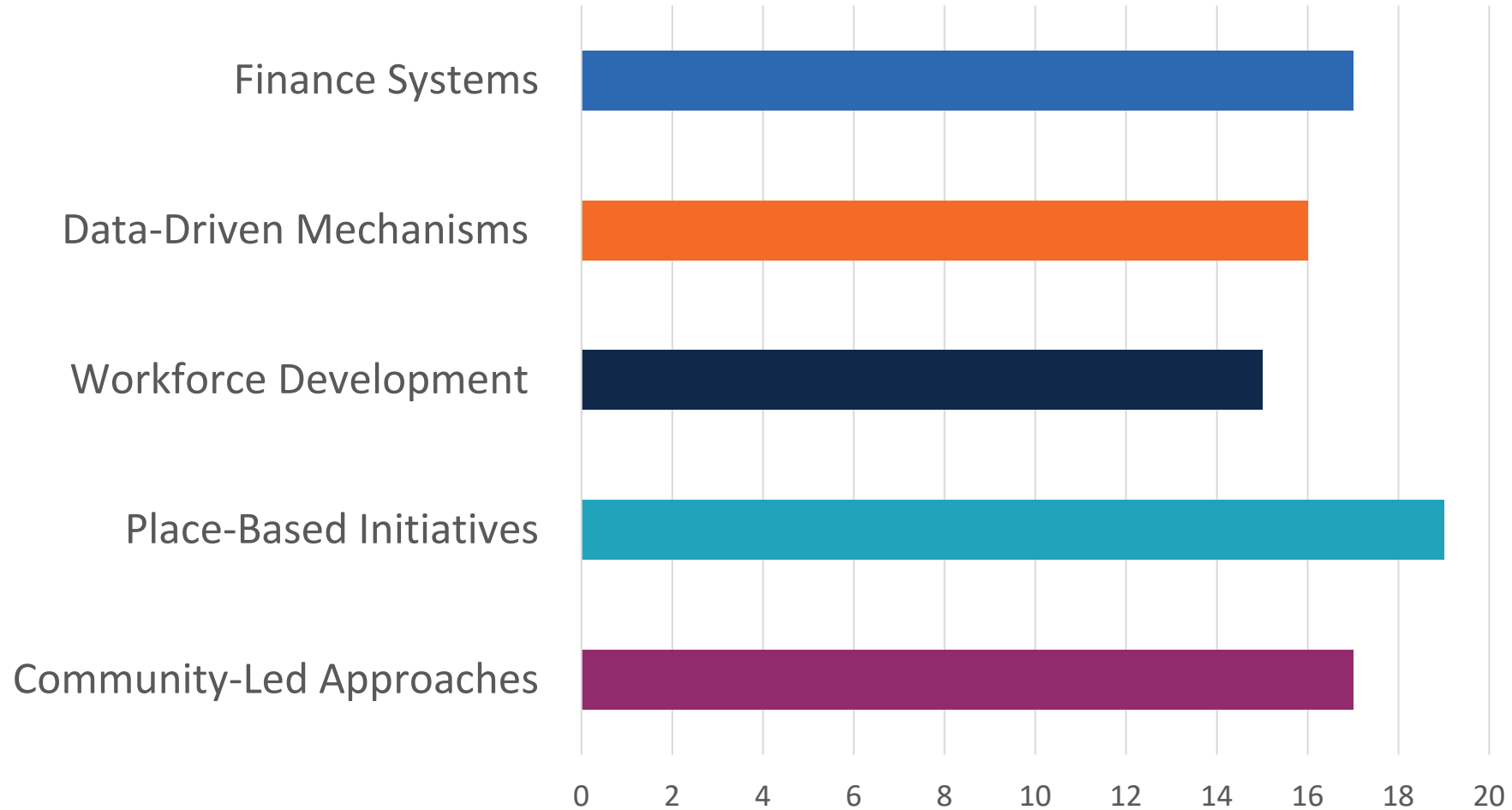


Organizational Commitment to Equity

The CDC Foundations Health Equity Stretch Framework provides the following model on addressing health equity systems change actions. This framework works to address root causes through systems change actions of Community-led approaches, place-based initiatives, workforce development, data-driven mechanisms, and finance systems.



Organizational Commitment to Equity



Conclusion & Opportunities

Equity and community representation is key to the partnerships, collaborations and efforts of the 19 organizations. The organizations cover diverse populations and focus on community led initiatives, participatory decision process, and political efficacy. Many of the topic areas surround **whole person care, providing services from education to healthcare access and environmental health justice.**

Throughout the partnerships, collaborations, and efforts there are promising pathways for social change and strong community ties working towards addressing health inequities. There are some **gaps in evaluation and assessment** of current projects and in showcasing the accomplishments of the efforts of each organization.





To request this document in another format, call 1-800-525-0127. Deaf or hard or hearing customers, please call 711 (Washington Relay) or email doh.information@doh.wa.gov