

Annual Pertussis Summary for Washington State, 2023 (Final data)

Washington State Department of Health

This update summarizes all reports of pertussis in persons with illness onset dates during 2023. The included reports were received by local health jurisdictions (LHJs) and reported to Washington State Department of Health (DOH) – Communicable Disease Epidemiology. The data included in this report from 2023 has now been finalized.

There were a total of 87 confirmed and probable pertussis cases reported statewide in 2023, compared to 76 cases reported in 2022. Dates for the 2022/2023 comparison are based primarily on symptom onset dates. For information about pertussis case counts in prior years, please refer to DOH's [Communicable Disease Annual Reports](#) or the [Annual Pertussis Reports](#).

Figure 1: Number of Pertussis Cases Reported in Washington State by Week of Symptom Onset: 2022 (blue) vs 2023 (red)

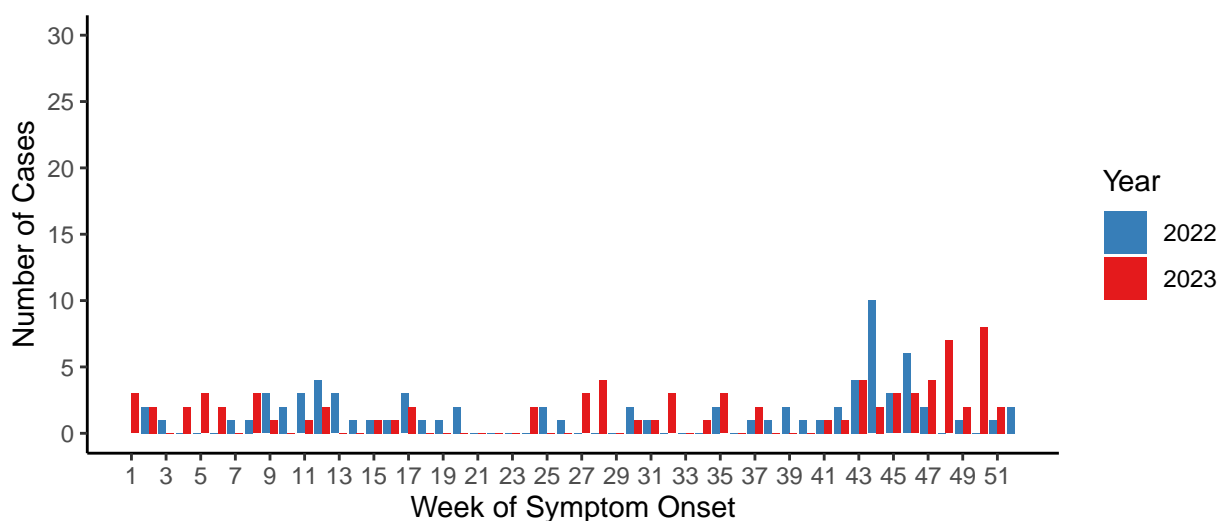


Figure 2: WA State Pertussis Cases Reported by Month and Year (black) with Projected Baseline and Epidemic Thresholds (red dashed lines), 2013-2023

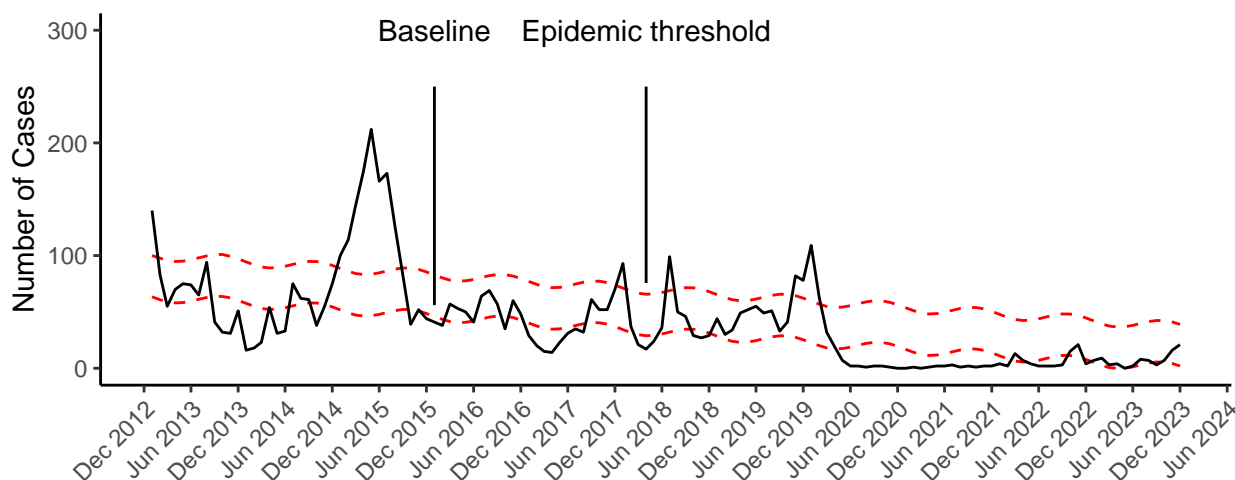


Table 1: WA State Pertussis Cases, Rate, and Percents by Age Group, 2023 (final data)

Age Group	OFM 2023 Population	Number of Cases	Rate per 100,000 persons	% of cases by age group*
< 1	82,255	7	8.5	8
1 - 4	348,258	24	6.9	28
5 - 9	466,940	13	2.8	15
10 - 13	397,192	7	1.8	8
14 - 18	497,827	12	2.4	14
19 - 24	605,359	1	0.2	1
25 - 44	2,265,779	10	0.4	11
45 - 64	1,895,532	8	0.4	9
65+	1,391,963	5	0.4	6
All ages	7,951,105	87	1.1	100

**Due to rounding, percentages may not always add up to 100%*

The overall annual incidence rate was 1.1 pertussis case per 100,000 Washington residents, with an incidence rate among infants under one year of age of 8.5 cases per 100,000 (see Table 1). Infants under one year of age are among the most vulnerable to severe pertussis disease.

Among the 8 infants who had pertussis in 2022, none had received any doses of pertussis-containing vaccine. All of these infants were old enough to receive at least one dose.

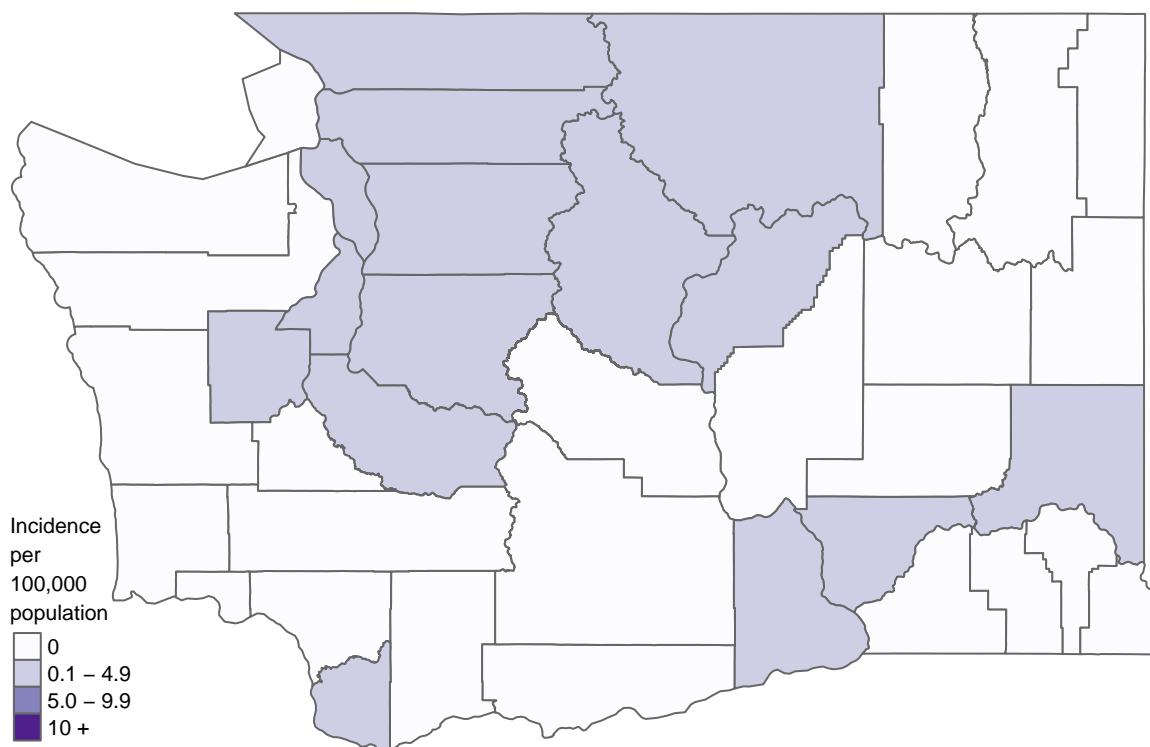
Table 2: WA State Pertussis Cases and Rate by County, 2023 (final data)

County	Number of Cases	OFM 2023 Population	Rate per 100,000 persons
King	29	2,347,799	1.2
Clark	15	527,400	2.8
Pierce	14	946,298	1.5
Whatcom	9	235,800	3.8
Benton	3	215,497	1.4
Kitsap	3	283,200	1.1
Snohomish	3	859,802	0.3
Chelan	2	81,498	2.5
Franklin	2	101,100	2.0
Skagit	2	131,997	1.5
Douglas	1	44,502	2.2
Island	1	88,145	1.1
Mason	1	66,998	1.5
Okanogan	1	42,997	2.3
Whitman	1	48,098	2.1

Among the 15 counties with reported pertussis activity in 2023, the number of pertussis cases in a given county ranged from 1 to 29 and county-level annual incidence rates ranged from 0.3 to 3.8 per 100,000 persons (see Table 2).

- The median and mean county-level year-to-date incidence rates in counties reporting pertussis activity are 1.5 and 1.8 per 100,000 persons, respectively.
- 24 counties had zero reported pertussis cases during 2023.

Figure 3: Annual Pertussis Incidence Rates by County, 2023 (final data)



NOTE: To request this document in another format, call 1-800-525-0127. Deaf or hard of hearing customers, please call 711 (Washington Relay) or email doh.information@doh.wa.gov.