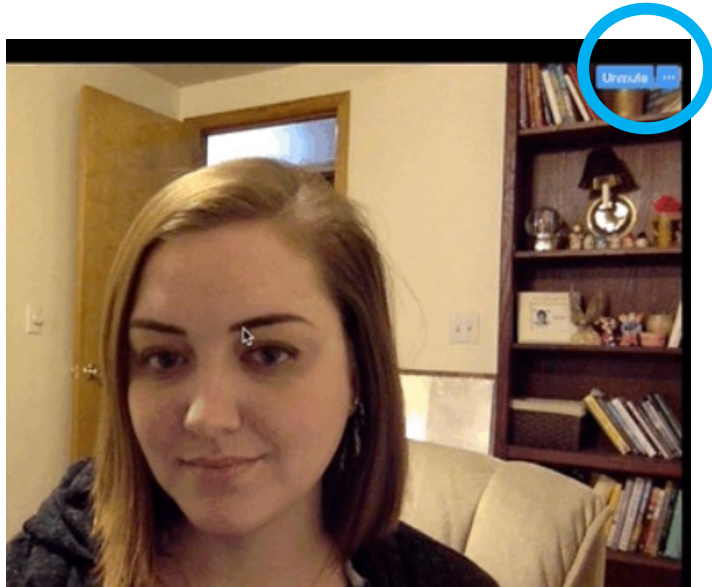


Welcome to the COMM NET Meeting



- ✓ Click the 3 dots in the top right of your image
- ✓ Select RENAME
- ✓ Enter...
 - ✓ First name,
 - ✓ Pronouns,
 - ✓ Your organization/agency name
- ✓ If you don't see your image, check your view settings at the top of the bar and set to see all webcams or Side-by-Side Gallery View
- ✓ Please make sure you are **muted**, and your **camera is turned off** if not speaking.

Spotlighted Sign Language Interpreters

For those needing sign language interpreters, we have spotlighted them. Their names are Saamanta and Vanessa.

Please send a direct message to them if you have any issues.

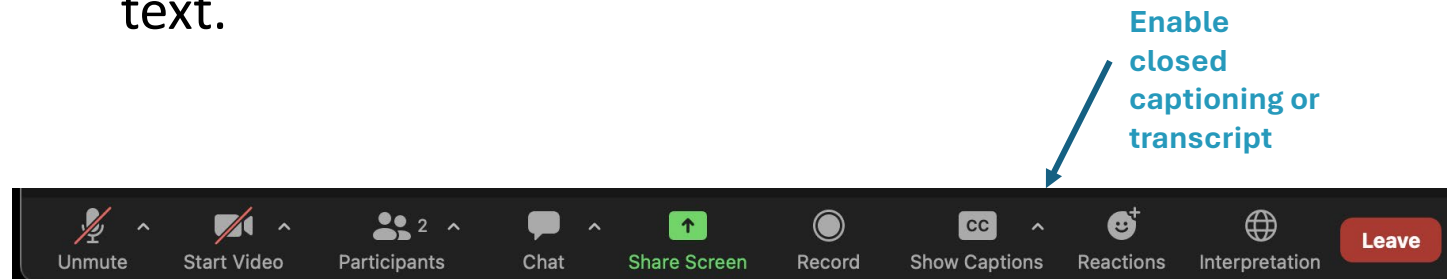
During this meeting

- Speak loudly and clearly
- Speak at a moderate pace
- Please avoid idioms, jargon, and technical vocabulary
- State your name when you start speaking for our interpreters

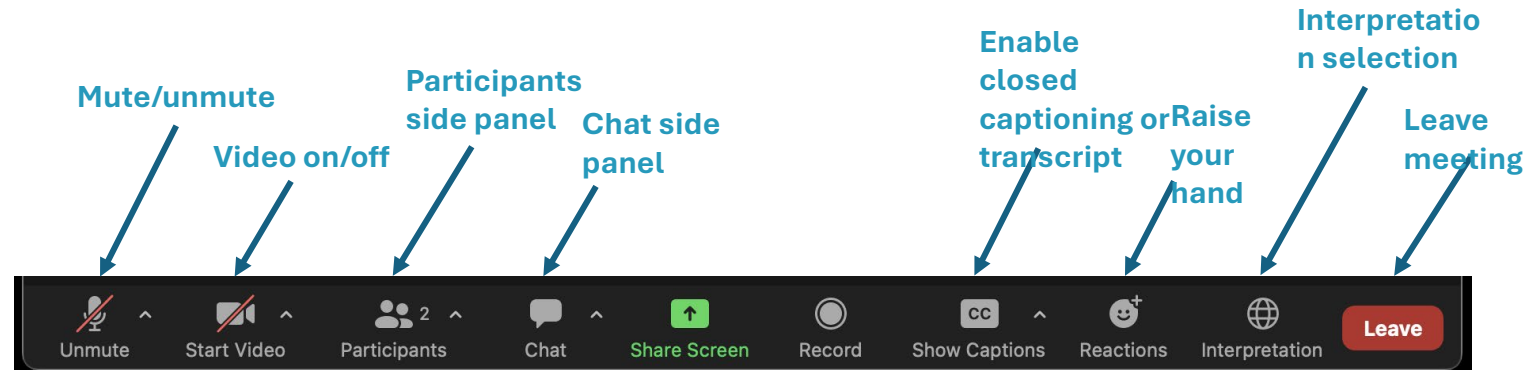


Captions and Transcript

- To view live captions, click on the menu arrow next to the Closed Caption button.
- Choose from showing subtitles, a full transcript, or both.
- You may adjust the size of the captions if you wish.
- You can also Hide Subtitles if you do not want to see the text.



Zoom navigation



NEED HELP? For help with interpretation or other accessibility concerns, direct message Linda Ramirez.



**Thank you,
interpreters!**



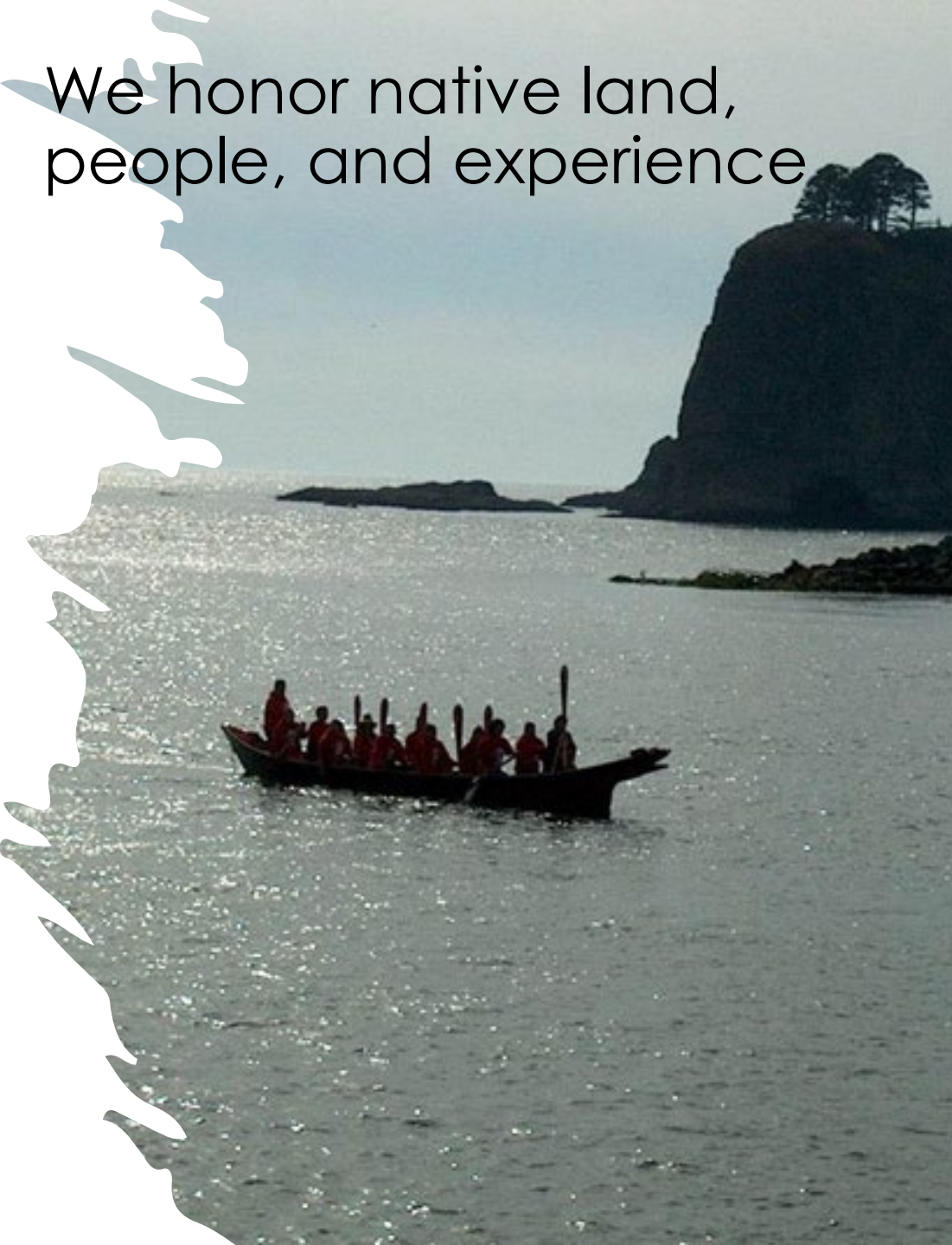
COMMUNICATION NETWORK 7/10/2025

Children and Youth with Special Health Care Needs

Housekeeping Items

- Please list your NAME, PRONOUNS and AFFILIATION in the chat
- **Ice breaker:** What is your favorite refreshing summer beverage?
- If you are new, please add your email address in the chat so we can make sure you are added to our future communication network list
- This meeting will be recorded except for the breakout sessions

We honor native land, people, and experience



- The Washington State Department of Health Children and Youth with Special Healthcare Needs (CYSHCN) program recognizes and honor the original occupants and stewards of the land where we all individually and collectively gather.
- Many of us are occupying space from lands that are of the traditional home of the Coast Salish people, the traditional home of all tribes and bands within the Duwamish, Suquamish, Tulalip, and Muckleshoot nations.
- The CYSHCN program honors the survival, the adaptations, the forced assimilation, the resilience and creativity of Native peoples—past, present, and future. We encourage CYSHCN partners to consider their responsibilities to the people and land, both here and elsewhere, and to stand in solidarity with Native, Indigenous, and First Nations People, and their sovereignty, cultural heritage, and lives.
- We also pause to recognize and acknowledge the labor upon which our country, state, and institutions are built.
- We remember that our country is built on the labor of enslaved people who were kidnapped and brought to the U.S. from the African continent and recognize the continued contribution of their survivors. We also acknowledge all immigrant labor, including voluntary, involuntary, trafficked, forced, and undocumented peoples who contributed to the building of the country and continue to serve within our labor force. We acknowledge all unpaid care-giving labor.
- To the people who contributed this immeasurable work and their descendants, we acknowledge our/their indelible mark on the space in which we gather today. It is our collective responsibility to critically interrogate these histories, to repair harm, and to honor, protect, and sustain this land.

**This land acknowledgement is adapted from Seattle Colleges*

Please share the people you honor of the land you are occupying in the chat
[Native-Land.ca](https://www.native-land.ca) | [Our home on native land \(native-land.ca\)](https://www.native-land.ca)

Agenda:

Time	Topic	Presenter
9:00-9:30	Welcome, Agenda, Care Coordination Overview	Monica Burke
9:30-10:00	Skipping the Phone Tree and Streamlining Communication	Ian Scott, WCAAP
10:00-11:00	Care Coordination Strategy Session	Amanda Simon, DOH Monica Burke, DOH
10:15-10:25	Break	
11:10-12:00	Care Coordination Strategy Session	Amanda Simon, DOH Monica Burke, DOH
11:50-12:00	Break	
12:10-1:00	Care Coordination Strategy Session Wrap Up	ALL

DOH-CYSHCN Team:



Monica Burke, PhD
CYSHCN Program Director



Nikki Dyer, MA Ed
Family Engagement Specialist



Linda Ramirez
CYSHCN Communications & Early Childhood Consultant



Khimberly Schoenacker, RDN, CD
CYSHCN Nutrition Consultant



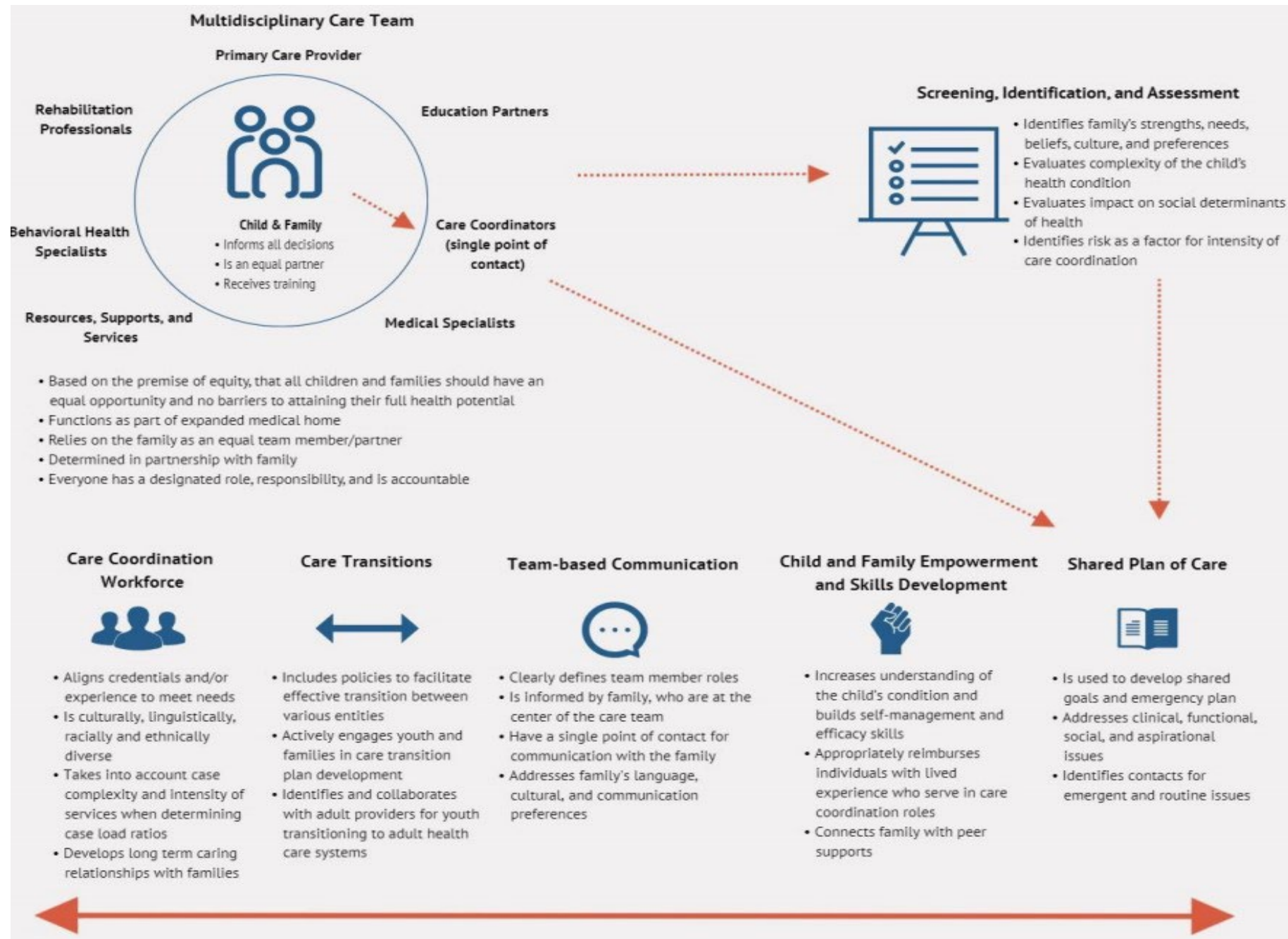
Amanda Simon, MPH, CTRS
Process Improvement Specialist

CYSHCN Care Coordination

Care Coordination Definition:

- patient- and family-centered, assessment-driven, team-based activities designed to meet the needs of children and youth.
- Care coordination addresses interrelated medical, social, developmental, behavioral, educational and financial needs to achieve optimal health and wellness outcomes, and efficient delivery of health-related services and resources within and across systems

National Care Coordination Standards



National Care Coordination Standards for Children and Youth with Special Health Care Needs (Oct. 2020)

Care Coordination Blueprint Implementation Project



Care Coordination



Peer Support



Ace Kids Act

Blueprint Aim

We aim to align cross-sector systems to support multi/interdisciplinary care coordination that includes use of shared plans of care with a peer support component because family centered care coordination increases equity in access and well-being of families

What have we learned?

- Many care coordination resources, but barriers exist:
 - Tied to specific eligibility requirements
 - May focus on one program/condition and not all areas
 - Hard to find out where to go
 - May not have knowledge of local resources (especially for rural areas)
- Peer support is key
- Coordinated care reduces the need for care coordination

Next Steps

- Continue Care Coordination Workgroup (MCHBG Strategy)
- Refine Care Coordination Toolkit & offer trainings (MCHBG Strategy)
- Work with Medicaid on innovative models (CMMP)
- Define local/state CYSHCN roles and strategies (Learning Journey, MCHBG Strategy)
- Increase network cohesion and communication (CommNet)
- Develop referral pathways between state agencies
- Enhance domain specific coordination (e.g., SMART, Nutrition Network, T1D)
- Integrate peer support

Skipping the Phone Tree and Streamlining Communication

Ian Scott

July 10, 2025



WCAAP Values

Advocacy

Equity

Collaboration

Partners in Student Health: Supporting school, LHJ, and provider collaboration



**“How do we foster relationship
and trust in times of transition?”**

Model: Lewis County

Weekly Zoom meetings starting September 2020 with local health officer, public health director, pediatricians, superintendents.

Streamlined communication between clinic and schools, **quicker return to in-person learning.**

School-based Covid vaccine clinics and testing sites.

Letter to community encouraging continued vigilance as community cases of Covid increased.

Current Partnerships

Thurston County

- Twice monthly meetings with school nurse workgroup, in partnership with ESD 113
- School nurse and provider surveys
- Meet and greet event held on March 12, 2024
- Back to school planning event – May 15, 2024
- **Measles and Infectious Disease – March 25, 2025**

NE Tri County Region

- Planning group convening 2nd week of July
- June 5th, 6th meetings share about PISH and Immunization Toolkit

Clallam County

- Formation of workgroup – ESD 114, North Olympic Health Network, Clallam Public Health
- **Meet & Greet event held on May 6, 2025**

Location Expansion

Lewis County

- Restart project where it all started (with new faces)

Jefferson County

- Closely affiliated with Clallam County

Others?

- Highly effective way to provide basic services through community led design in a funding landscape strapped for \$\$\$

**“This program allowed for our
community’s genius to thrive”**

Impact

Local partnerships help streamline communication, promote collaborative problem-solving, and prevent siloing of work.

Digital Directory

WCAAP is positioned to share strategies and learnings from around the state, offer resources, and make connections.



Back-To-School!





**“Advocating for kids, adolescents, families,
and all who care for kids”**

Thank you!

If you would like to learn more or discuss the current needs in your community, please contact:

Maria Huang, MD (mchuang8@gmail.com)

Ian Scott (iscott@wcaap.org)

Lori Gosselin (lgosselin@wcaap.org)

Questions?



Impromptu Networking

What perspective(s) are you bringing to this space?

What do you hope to give to this meeting?

What do you hope to get from this meeting?

Mural Links

- [Group 1 Mural Link](#)
- [Group 2 Mural Link](#)
- [Group 3 Mural Link](#)
- [Group 4 Mural Link](#)
- [Group 5 Mural Link](#)
- [Group 6 Mural Link](#)



10-MINUTE BREAK

Please return by 10:39



10-MINUTE BREAK

Please return by 12:10

IDD/AUTISM RESOURCES & RESOURCE NAVIGATION ECHO

The purpose of the **Intellectual and/or Developmental Disabilities (IDD) Resource ECHO** is to provide evidence-based resources, services, and information for those providing navigation support for **individuals with IDD and/or Autism**.

Every third Wednesday of the month, 8:30 am – 10:30 am via zoom with a break in July and August.

You can register anytime.

ECHO is an acronym that stands for **Extension for Community Healthcare Outcomes**. ECHO is a virtual, interactive program that accelerates knowledge and information sharing through an “All Teach, All Learn” framework.

What You Gain:

- Getting Started
- Resource Navigation
- Cultural Humility for Life-long Learning
- Parent and Caregiver Readiness
- Neurodiversity and Autism Pride
- Profound Autism-Unique Needs
- Navigating Early Intervention
- State & Federal resources
- Therapies and Interventions
- Behavioral Health Services
- Challenging Behaviors
- Crisis Services
- Transition to Adulthood / Lifespan
- Effective Advocacy
- Other Vital Resources, Info, and Supports

Registration

Visit: <https://wainclude.org/>

Follow these 2-step instructions:

- **Become a WA INCLUDE Collaborative member.**
- **Register for Autism Resource Navigation ECHO. You must do both to activate registration.**

Questions?



Contact us at: echoidd@uw.edu



LEARN, SHARE, & APPLY KNOWLEDGE

Who Should Attend?

Anyone who supports the IDD/Autism community in a professional capacity* including:

- Care Coordinators
- Social Workers
- Clinical Supervisors
- Case Managers
- Community Health Workers
- Healthcare Workers
- Clinicians and Providers
- Advocates

1.
* sessions include discussion of actual cases so not open to the public

WA INCLUDE

EDUCATE. PROMOTE. EMPOWER.

Closing and Next Steps

- Meeting Minutes and Recording will be available in the coming weeks
 - Please fill out [evaluation](#)
 - Please fill out [networking survey](#)
 - Please fill out [form](#) with any program updates
 - Send questions or additional info to:
CYSHCN@doh.wa.gov



To request this document in another format, call 1-800-525-0127. Deaf or hard of hearing customers, please call 711 (Washington Relay) or email civil.rights@doh.wa.gov.