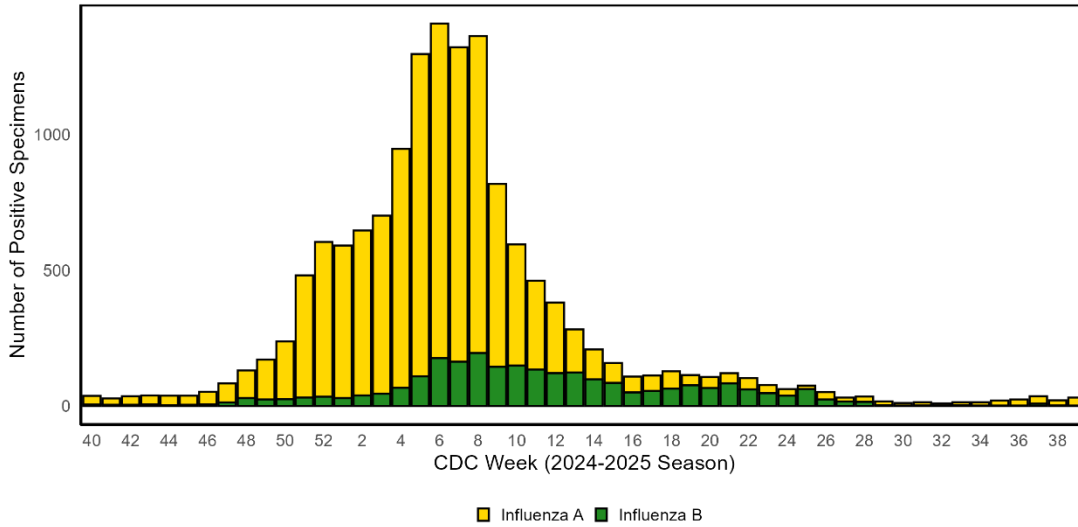




**Figure 2: Influenza Positive Tests Reported to CDC, WA Commercial Laboratories**

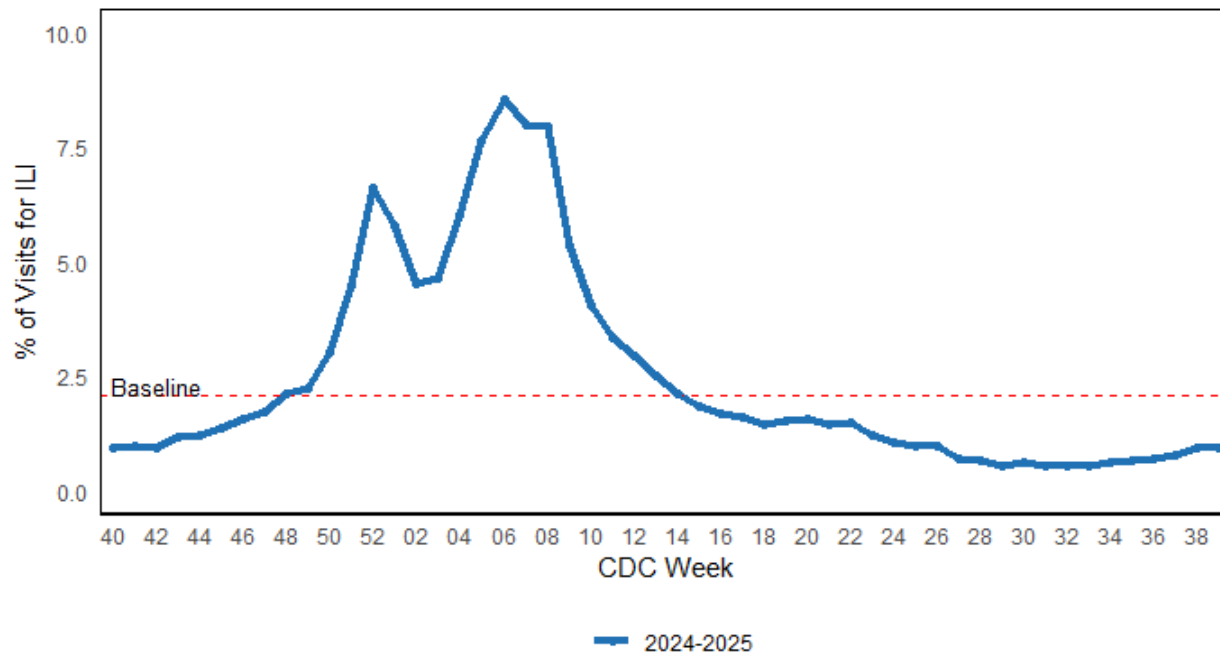


## Outpatient Influenza-like Illness Surveillance

### Outpatient Influenza-like Illness Surveillance Network (ILINet) Data

Information on patient visits to health care providers for influenza-like illness is collected through the U.S. Outpatient Influenza-like Illness Surveillance Network (ILINet). Each week, healthcare providers in Washington reported data to CDC on the total number of patients seen and the number of those patients with influenza-like illness (ILI) by age group. For the purposes of ILINet, ILI is defined as fever (temp 100°F/37.8°C or higher) plus cough and/or sore throat. More information about ILINet is available [here](#).

**Figure 3: Percentage of ILI Visits Reported by Sentinel Providers, Washington, 2024-2025**



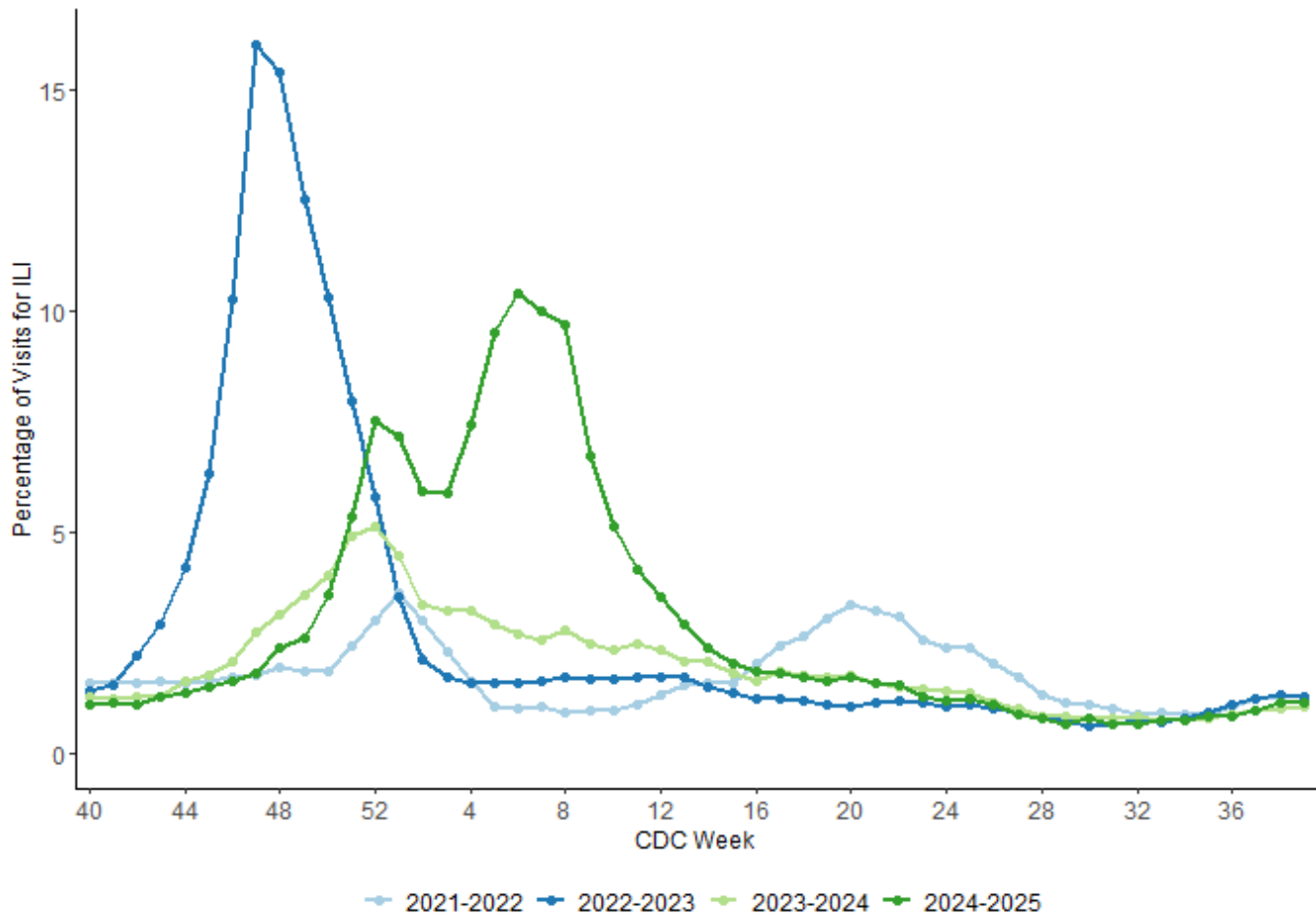
## Influenza-like Illness Syndromic Surveillance Data

### ESSENCE Syndromic Surveillance Data

Figure 4 shows the proportion of visits at a subset of emergency departments across Washington where patients had a chief complaint of influenza-like illness, or were given a discharge diagnosis of influenza, by CDC week. For this purpose, ILI is defined as “influenza”, fever with cough, or fever with sore throat.

Read the [Syndromic Surveillance \(Rhino\) web page](#) for more information.

**Figure 4: Syndromic Surveillance, Percentage of Hospital Visits for a Chief Complaint of ILI, or Discharge Diagnosis of Influenza, by CDC Week, Washington, 2021-2025**



## Influenza-like Illness Outbreaks in Long Term Care Facilities

During the 2024-2025 influenza season, 233 influenza-like illness outbreaks in long-term care facilities were reported to the Washington State Department of Health.

Long term care facilities are required to report all suspected and confirmed outbreaks to their [local health jurisdiction](#) per Washington Administrative Code (WAC) [246-101-305](#). Long-term care facilities are required to report the following:

- A sudden increase in acute febrile respiratory illness over the normal background rate (e.g., 2 or more cases of acute respiratory illness occurring within 72 hours of each other) OR
- Any resident who tests positive for influenza

Local health jurisdictions in turn report long-term care facility influenza-like illness outbreaks to the Washington State Department of Health.

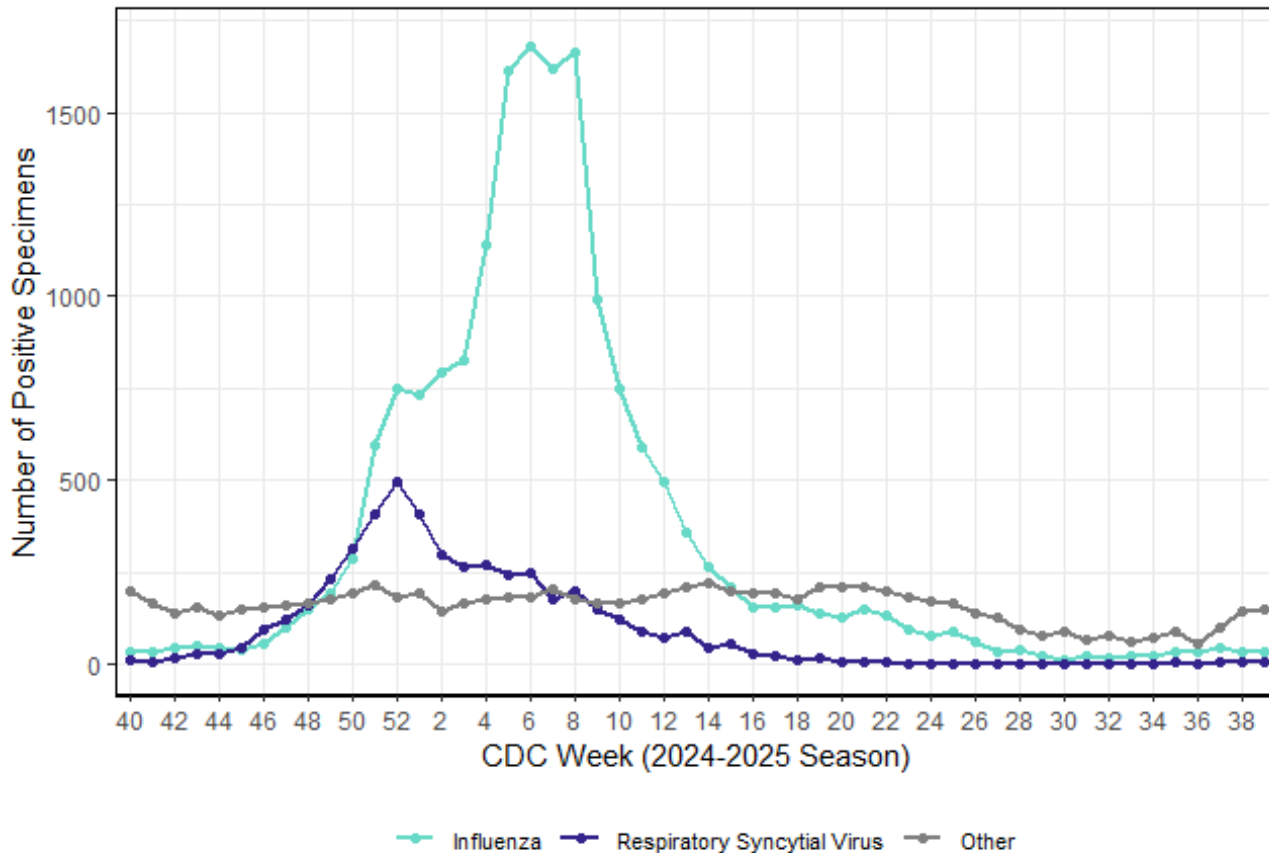
## Other Causes of Respiratory Infections

During the 2024-2025 season, the following respiratory viruses were reported to the National Respiratory and Enteric Surveillance System (NREVSS). NREVSS does not capture [COVID-19](#) testing data.

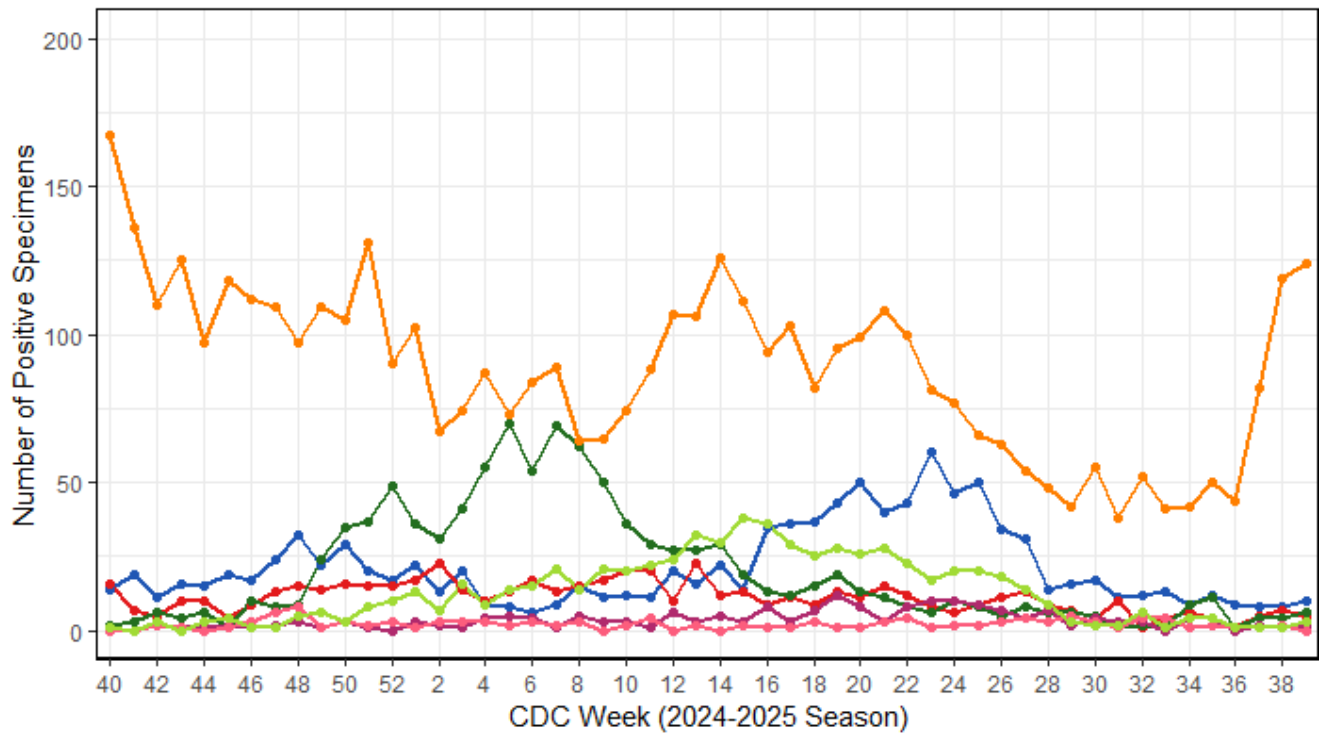
For more information about NREVSS, see the [CDC Interactive Dashboard](#).

Figure 5 shows more common respiratory viruses reported to NREVSS during the 2024-2025 season including Influenza, Respiratory Syncytial Virus, and Other Viruses. Figure 6 shows less common respiratory viruses reported to NREVSS during the 2024-2025 season including Adenovirus, Seasonal Coronavirus, Rotavirus, Enteric Adenovirus, Human Metapneumovirus, Rhinovirus/Enterovirus.

**Figure 5: More Common Respiratory and Enteric Viruses, Washington, 2024-2025 Season**



**Figure 6: Less Common Respiratory and Enteric Viruses, Washington, 2024-2025 Season**



- Human Parainfluenza Virus
 —●— Seasonal Coronavirus
 —●— Enteric Adenovirus
 —●— Rhinovirus/Enterovirus
- Adenovirus
 —●— Rotavirus
 —●— Human Metapneumovirus

## Laboratory Confirmed Influenza-Associated Deaths

### Reported Laboratory-Confirmed Influenza Associated Deaths

Note that these counts reflect only deaths officially reported to the Washington State Department of Health and are likely underreported for a variety of reasons. Influenza may not be listed as a cause of death, influenza testing may not have been performed, and lab-confirmed influenza deaths may not have been appropriately reported to public health. CDC has published information about [estimating seasonal influenza-associated deaths](#).

507 laboratory-confirmed influenza-associated deaths were reported since week 40 of 2024; 492 influenza A, 14 influenza B, and 1 type unknown.

**Table 1: Count of Reported Laboratory-Confirmed Influenza-Associated Deaths by Age Group, Washington, 2024-2025 season**

| Age Group<br>(in years) | Count of Deaths |
|-------------------------|-----------------|
| 0-4                     | 2               |
| 5-17                    | 2               |
| 18-29                   | 6               |
| 30-49                   | 33              |
| 50-64                   | 75              |
| 65+                     | 389             |
| Total                   | 507             |

### Reported Laboratory-Confirmed Influenza-Associated Deaths, Past Seasons

Lab-confirmed influenza-associated death totals reported to the Department of Health for past seasons are presented below in Table 2. Note that for the purposes of tables 1 and 2, each influenza season runs from week 40 of one year to week 39 of the next (roughly October to October). Past season summaries are available on the [Department of Health website](#).

**Table 2: Count of Reported Laboratory-Confirmed Influenza-Associated Deaths, Past Seasons**

| Season             | Count of Deaths Reported for the Entire Season<br>(week 40 to week 39) |
|--------------------|--|
| 2024-2025, to date | 507  |
| 2023-2024          | 132  |
| 2022-2023          | 272  |
| 2021-2022          | 26   |
| 2020-2021          | 0  |
| 2019-2020          | 114  |
| 2018-2019          | 241  |
| 2017-2018          | 296  |
| 2016-2017          | 276  |

## Additional Resources

International Influenza Data: <https://www.who.int/teams/global-influenza-programme/surveillance-and-monitoring/influenza-updates/current-influenza-update>

National Influenza Surveillance Report: <https://www.cdc.gov/fluview/index.html>

Washington DOH Influenza Information for Public Health and Healthcare Providers:

<http://www.doh.wa.gov/ForPublicHealthandHealthcareProviders/PublicHealthSystemResourcesandServices/Immunization/InfluenzaFluInformation>

Washington Joint Respiratory Disease Dashboard: <https://doh.wa.gov/data-and-statistical-reports/diseases-and-chronic-conditions/communicable-disease-surveillance-data/respiratory-illness-data-dashboard>

Washington Local Health Department Influenza Surveillance Reports:

Benton-Franklin Counties: [https://www.bfhd.wa.gov/data\\_reports/data\\_dashboards](https://www.bfhd.wa.gov/data_reports/data_dashboards)

Clallam County: <https://www.clallamcountywa.gov/1865/Data-and-Assessment>

Clark County: <https://clark.wa.gov/public-health/respiratory-illness-data>

Grant County: <https://www.granthealth.org/228/Respiratory-Viruses-Seasonal-Trends>

Island County: <https://www.islandcountywa.gov/1015/Current-Respiratory-Illness-Activity>

Jefferson County: <https://jeffersoncountypublichealth.org/979/Provider-Advisories-Messages>

King County: <https://kingcounty.gov/en/dept/dph/health-safety/disease-illness/respiratory-virus-data>

Kitsap County: <https://www.kitsappublichealth.org/cd/respiratoryreport>

Pierce County: <https://tpchd.org/health/diseases/respiratory-illness/data-dashboard/>

Skagit County: <https://www.skagitcounty.net/departments/healthdiseases/main.htm>

Snohomish County: <https://www.snohd.org/546/Respiratory-Illness-Dashboards>

Spokane County: <https://srhd.org/respiratory-illness-dashboard>

Thurston County: <https://www.thurstoncountywa.gov/departments/public-health-and-social-services/disease-control-and-prevention/respiratory-illnesses>

Walla Walla County:

[https://dch.wwcowa.gov/epidemiology\\_and\\_prevention/data\\_and\\_reports/data\\_dashboard.php](https://dch.wwcowa.gov/epidemiology_and_prevention/data_and_reports/data_dashboard.php)

Whatcom County: <https://www.whatcomcounty.us/4281/Respiratory-Virus-Data-Dashboards>

Whitman County: <https://whitmancountypublichealth.org/community-health/disease-prevention/community-activity-levels>

Yakima County: <http://www.yakimacounty.us/365/RSV-Flu-Stats>

DOH 420-100 December 2025

To request this document in another format, call 1-800-525-0127. Deaf or hard of hearing customers, please call 711 (Washington Relay) or email [doh.information@doh.wa.gov](mailto:doh.information@doh.wa.gov).

