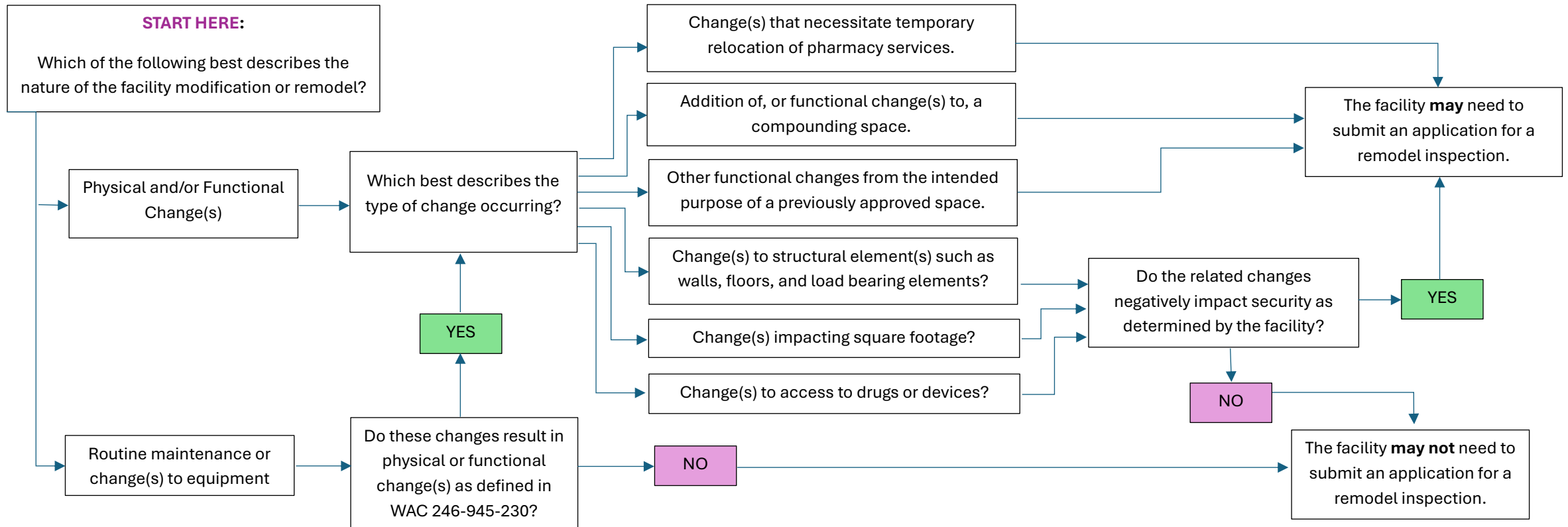


# Guidance Document: Modification(s) and Remodel Inspections

WAC 246-945-230

This flow chart is intended to serve as a resource and starting point for applicable facilities listed under WAC 246-945-230(1) in determining when changes to a previously approved area, building, room, or compounding space of a facility may require a remodel inspection. Please see WAC 246-945-230 for complete rule pertaining to modifications and remodels.



Select Definitions from **WAC 246-945-230(1)**:

"Facility" includes pharmacies, nonresident pharmacies, health care entities, hospital pharmacy associated clinics, wholesalers, and manufacturers.

"Physical change" or "physical changes" are alterations to a previously approved space, including: (i) Changes to structural element(s) such as walls, floors, and load bearing elements that negatively impact security as determined by the facility; (ii) Changes impacting square footage that negatively impact security as determined by the facility; (iii) Changes to access to drugs or devices that negatively impact security as determined by the facility; (iv) Changes that necessitate temporary relocation of pharmacy services; or (v) Addition of, or functional changes to, a compounding space.

"Functional change" or "functional changes" are alterations to the intended purpose of the previously approved space, including repurposing a previously approved compounding space for a different function, such as conversion of a nonhazardous to a hazardous compounding space.



To request this document in another format, call 1-800-525-0127. Deaf or hard of hearing customers, please call 711 (Washington Relay) or email [doh.information@doh.wa.gov](mailto:doh.information@doh.wa.gov).