

### Total Patients Per Day

2017	2020	2022
69	91	124



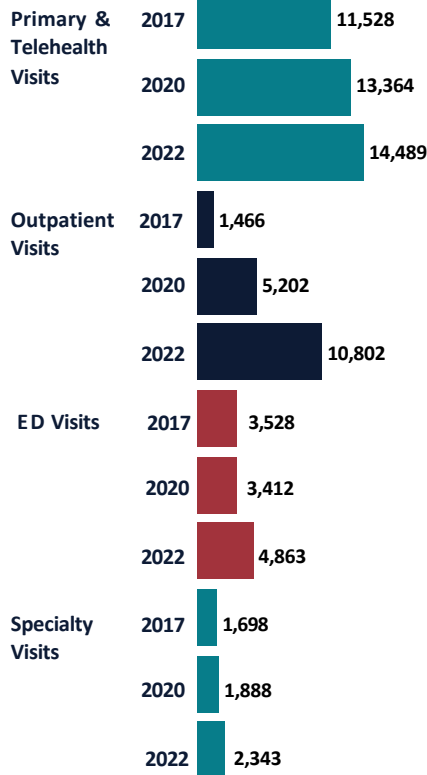
### Acute Inpatients Per Day

2017	2020	2022
0.8	0.6	0.6

### Services Offered

Advanced Imaging	✓
Behavioral Health	✓
Emergency	✓
Inpatient	✓
Lab	✓
Primary Care	✓
Rehabilitation	✓
Specialty	✓
Surgery	✓
TeleHealth	✓

### Service Volume



### History

The Inter Island Medical Center (IIMC), a privately owned, rural health clinic began serving San Juan and adjacent islands in 1973. The San Juan County Public Hospital District No. 1 (the District) formed in 1989 to help support the IIMC. By 2006, the District, along with concerned Islanders began exploring options for meeting future health care needs. A 2007 study determined that the IIMC could not be economically upgraded. The best solution to restore financial stability and to provide 24/7 care was determined to be the creation of a critical access hospital and that a partnership with a mainland health care provider was needed. PeaceHealth was selected and a 50-year contract, which provided that PeaceHealth would build and operate the hospital while the District would subsidize certain services, was finalized. The new hospital, Peace Island Medical Center, opened in 2012 as a Critical Access Hospital after meeting the federal and state designation requirements in the Washington State Rural Health Plan and the Medicare Conditions of Participation. However, due to changes to state law, Peace Island is the only CAH in the State that is not cost-based reimbursed by Medicaid.

### Today

Peace Island's primary care clinic now provides the majority of the primary care in the District. The primary care clinic also provides behavioral health services to ensure the integration of behavioral and physical health. Specialty services are provided through visiting specialists in cancer care; cardiology; obstetrics and gynecology; ear, nose, and throat medicine; orthopedics; gastroenterology and general surgery. A collaboration with the Joyce L. Sobel Family Resource Center and Sea Mar Community Health Centers provides periodic pop-up health fairs for Latinx residents on San Juan Island.

Peace Island has been recognized with several awards by Press Ganey, the national leader in healthcare consumer and workforce engagement, including the Human Experience Guardian of Excellence Award seven years in a row for Patient Experience in the Emergency Department. The survey captures patient responses related to communication, wait times, respect and courtesy, patient privacy, and pain control.

### Workforce

9% of total budgeted FTEs are unfilled (6.5 FTEs). The most pressing unfilled positions today are Surgery Technicians, Registered Nurses, Physicians, and ED Techs.

Top issues in recruiting include a lack of qualified candidates, affordable/available housing, and professional and quality of life opportunities for spouses.



**2.2K**  
COVID-19  
Vaccines  
Administered  
Since 2020

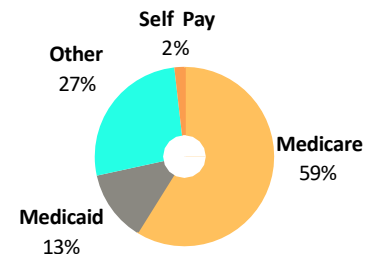
### Maternal Health

In 2022, 47 District babies were born in a hospital. Peace Island does not provide OB, and the next closest birthing hospital is located on the mainland.

### Financial Indicators & Market Share

	2017	2020	2022
Charity Care	215,166	1,299,429	650,827
Cost of Bad Debt	\$590,288	\$260,931	\$1,190,703
Net Patient Revenue	17,299,982	17,863,267	23,204,721
Operating Margin	24.7%	12.4%	4.8%
Total Margin (Operations & Taxes)	11.5%	2.5%	-3.8%
Service Area Inpatient Market Share	17.3%	15.6%	15.3%
Inpt Mkt Share Medicare/caid	19.6%	15.9%	17.4%
Inpt Mkt Share HMO/Commercial	6.3%	7.4%	2.2%

### 2022 Payer Mix



Unless indicated, all data is from CHARS or internal sources.

This publication was made possible by Grant Number U2WRH33326 from the Health Resources and Services Administration (HRSA), an operating division of the U.S. Department of Health and Human Services. Its contents are solely the responsibility of the authors and do not necessarily represent the official views of the HRSA or the U.S. Department of Health and Human Services.

## Our Community

Peace Island's main service area is defined as San Juan Island (SJI) and Public Hospital District #1 which includes SJI as well as Stuart, Henry, John's, Spieden, and Pearl Islands. Peace Island also serves the entirety of San Juan County for inpatient care.

At approximately 621 square miles, San Juan County is the smallest County (39th out of 39th) in land area and 32nd in population with more than 17,000 residents. SJI is the largest island in the county representing nearly 48% of the county's population.

Peace Island's service area has rapidly aged and is one of the oldest areas in Washington state with more than 40% of residents aged 65+.

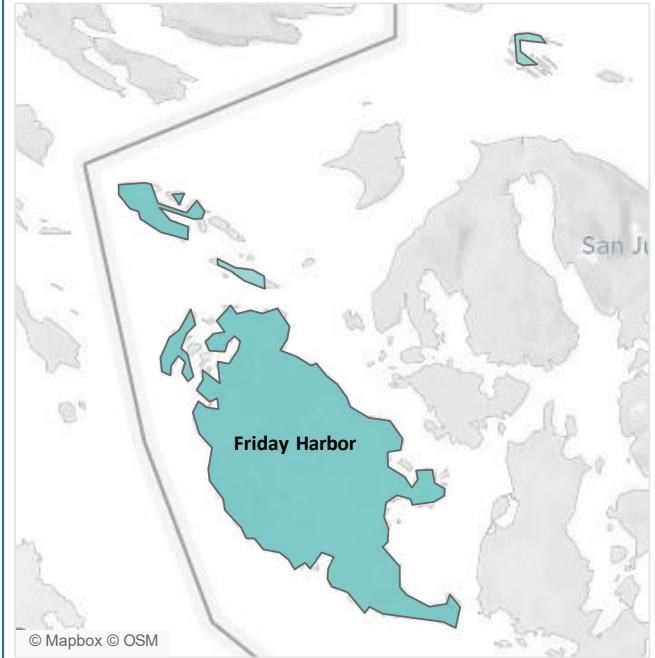
## Top Employers

- Tourism
- Retail/Service
- Real Estate
- Construction
- Management/Administration

## Community Benefit

- Care Coordination & Transitions
- Chronic Disease Management
- Community Health Worker/Outreach
- Diabetes Education
- Health Education & Screenings
- Immunizations
- Nutrition and Physical Activity
- Obesity Prevention
- Smoking Cessation
- Substance Abuse
- Support Groups
- Weight Loss Classes

## Service Area



## Socioeconomic Characteristics



**96% of those age 25 and Older are High School Graduates**  
4% Better than Washington



**22% of Households with Income Less than 200% of the FPL**  
4% Better than Washington



**30% of residents who rent spend more than 30% of income on rent**  
35% Better than Washington



**7% are Uninsured**  
3% Worse than Washington

Source: American Community Survey

## Health Factors

Adults Who Smoke  
**8%**  
23% Lower than Washington

Binge Drinking  
**19%**  
17% Higher than Washington

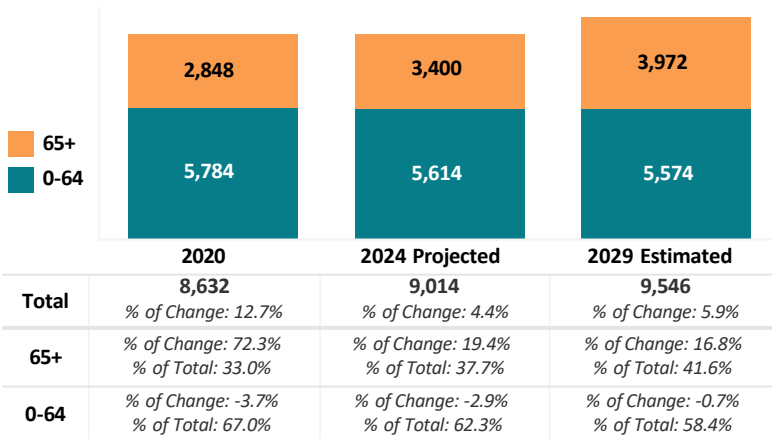
Rate of Obesity  
**21%**  
29% Lower than Washington

**Adults Who Smoke:** Adults who report having smoke 100 or more cigarettes in their lifetime and currently smoke every day or some days.  
**Binge Drinkers:** Males having 5+ drinks on one occasion; females having 4+ or more drinks on one occasion.

Source: BRFSS

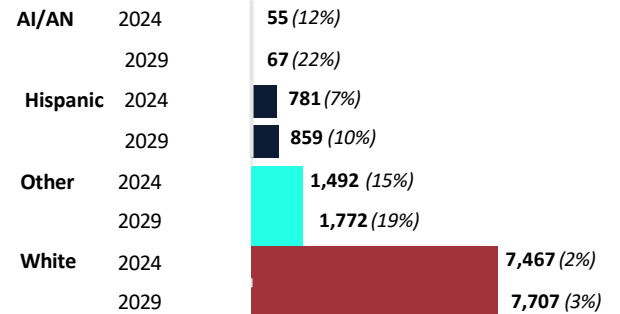
## Population

(% Change from Prior Datapoint, 2020 Compared to 2010)



## Race & Ethnicity

(% Change from Prior Datapoint, 2024 Compared to 2020)



Hispanic category includes entire Hispanic population regardless of race. Other includes Asian, Black, Native Hawaiian/Pacific Islander, 2+ Races, and Other.  
Source: Claritas