



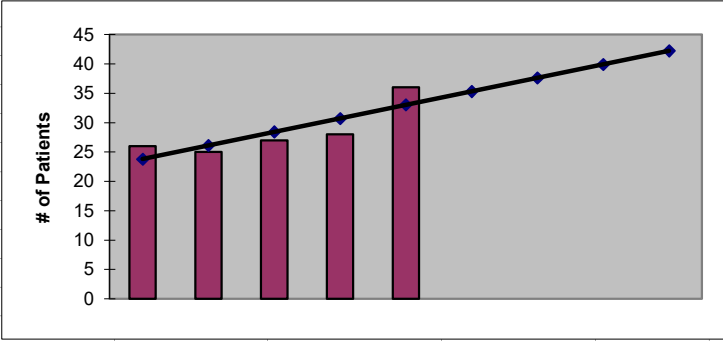
2022
Adams County
ESRD Need Projection Methodology

Planning Area		6 Year Utilization Data - Resident Incenter Patients					
Adams		2016	2017	2018	2019	2020	2021
Adams County		21	26	25	27	28	36
TOTALS		21	26	25	27	28	36
246-310-812(4)(a)	Rate of Change		23.81%	-3.85%	8.00%	3.70%	28.57%
	6% Growth or Greater?		TRUE	FALSE	TRUE	FALSE	TRUE
	Regression Method:	Linear					
246-310-812(4)(c)			Year 1 2022	Year 2 2023	Year 3 2024	Year 4 2025	Year 5 2026
Projected Resident Incenter Patients	from 246-310-812(4)(b)		35.30	37.60	39.90	42.20	44.50
Station Need for Patients	Divide Resident Incenter by 3.2		11.03	11.75	12.47	13.19	13.91
	Rounded to next whole number		12	12	13	14	14
246-310-812(4)(d)	subtract (4)(c) from approved stations						
Existing CN Approved Stations	Total		11	11	11	11	11
Results of (4)(c) above			12	12	13	14	14
Net Station Need			-1	-1	-2	-3	-3
Negative number indicates need for stations							
Planning Area Facilities							
Name of Center	# of Stations						
FMC Leah Layne Dialysi	11						
Total	11						
Source: Northwest Renal Network / Comagine ESRD Network 16 data 2016-2021							
Most recent year-end data: 2021 posted 03/15/2022							



2022
Adams County
ESRD Need Projection Methodology

x	y	Linear
2017	26	24
2018	25	26
2019	27	28
2020	28	31
2021	36	33
2022		35.30
2023		37.60
2024		39.90
2025		42.20
2026		44.50



SUMMARY OUTPUT

<i>Regression Statistics</i>	
Multiple R	0.827788113
R Square	0.685233161
Adjusted R Square	0.580310881
Standard Error	2.846049894
Observations	5

ANOVA					
	<i>df</i>	<i>SS</i>	<i>MS</i>	<i>F</i>	<i>Significance F</i>
Regression	1	52.9	52.9	6.530864198	0.08353706
Residual	3	24.3	8.1		
Total	4	77.2			

	<i>Coefficients</i>	<i>Standard Error</i>	<i>t Stat</i>	<i>P-value</i>	<i>Lower 95%</i>	<i>Upper 95%</i>	<i>Lower 95.0%</i>	<i>Upper 95.0%</i>
Intercept	-4615.3	1817.100446	-2.539925633	0.084685034	-10398.1246	1167.5246	-10398.1	1167.525
X Variable 1	2.3	0.9	2.555555556	0.08353706	-0.564201675	5.164201675	-0.5642	5.164202