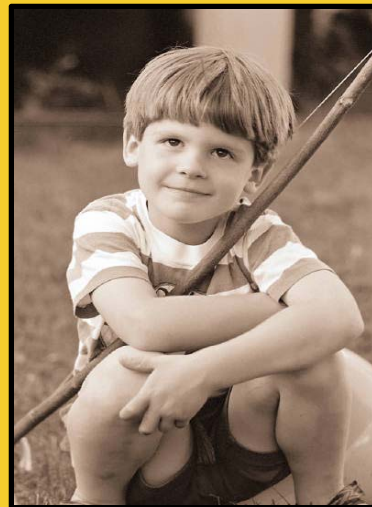


# Improving the Health of Adams County Residents



Adams County Health  
Department 2011

# What Are We Talking About Today

COUNTY INDICATORS

COMMUNICABLE  
DISEASES



# Why Health Indicator Data?



TO ANSWER THESE QUESTIONS:

How healthy are Adams County residents



How does Adams County compare to the state average?



# What Are The Indicators?

- 32 Indicators
- Criterion: at least 80% of LHJs must have data
- Focus: Comparison among all LHJs and state average

# What Are The Indicators

- **Communicable Disease (4 indicators)**

Reported Chlamydia infection

Treated Chlamydia infections

Influenza vaccination (65 years or older)

Reported child immunizations (new for 2010)

- **Prevention and Health Promotion(8 indicators)**

Years of healthy life expected at age 20

Adult cigarette smoking

Adult physical activity

Adults overweight/obese

Adult binge drinking

Adult fruit/vegetable consumption

Adults with diabetes

Adult poor mental health

- **Environmental Health (3 Indicators)**

Solid waste facilities in compliance

On site sewage system corrections (new for 2010)

Food service safety (new for 2010)

# What Are The Indicators (cont.)

- **Maternal and Child Health (9 indicators)**

First trimester prenatal care

Teen birth rate

Teen physical activity

Teens overweight

Childhood unintentional injury hospitalizations

Maternal cigarette smoking

Low birth rate

Teen cigarette smoking

Teen alcohol use

- **Assess to care (8 indicators)**

Adults with unmet medical need

Adults preventive cancer screening –Breast

Adult preventive cancer screening –Cervical

Adults with health insurance

Children with health insurance (new for 2010)

Adults with personal healthcare provider

Adults preventive cancer screening - Colorectal

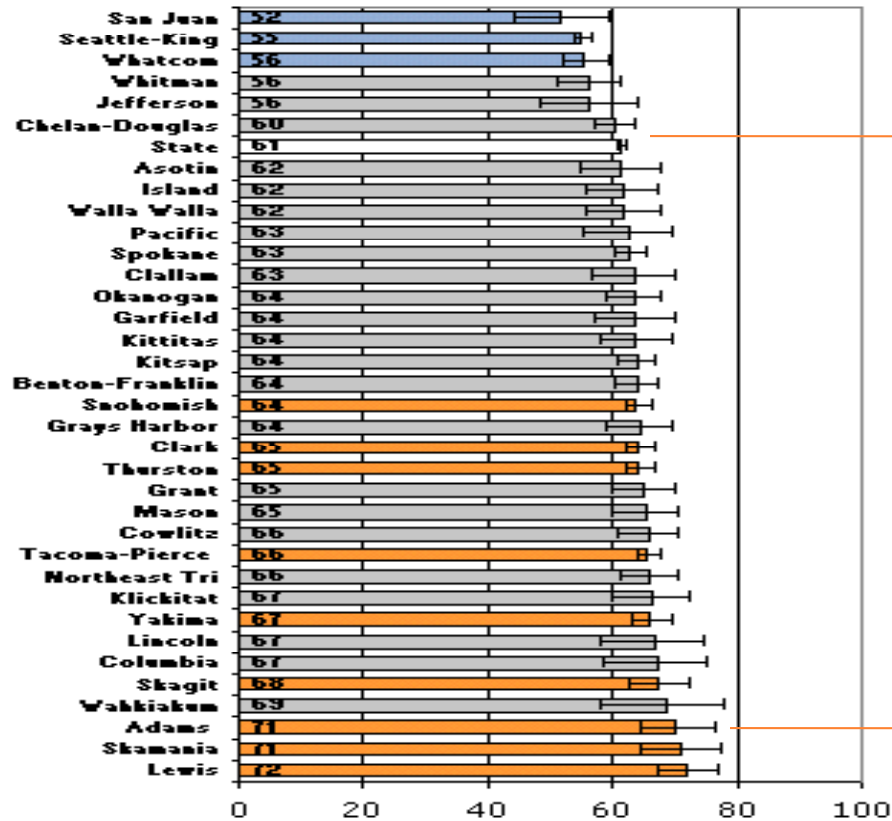
Adult dental care

# Local Public Health Indicators

Areas where Adams County residents' health is worse than the state average

- Adult obesity
- Adult diabetes
- Adult fruit/vegetable consumption
- Teen birth rates

# Adult Obesity 2007-2008

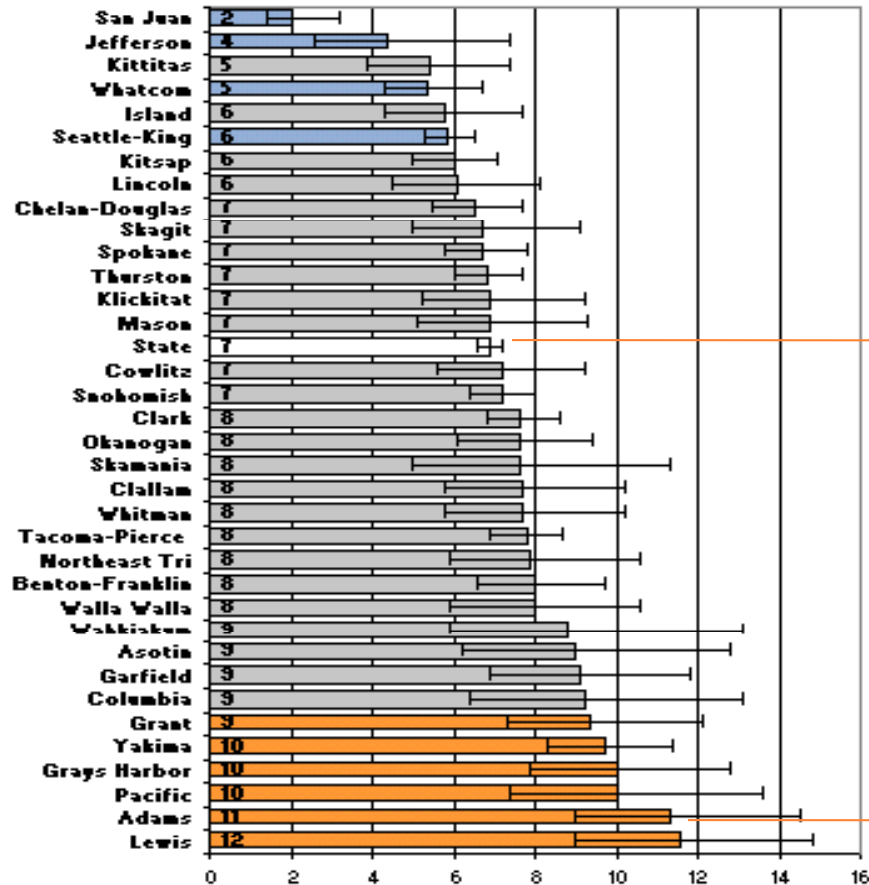


State

Adams County



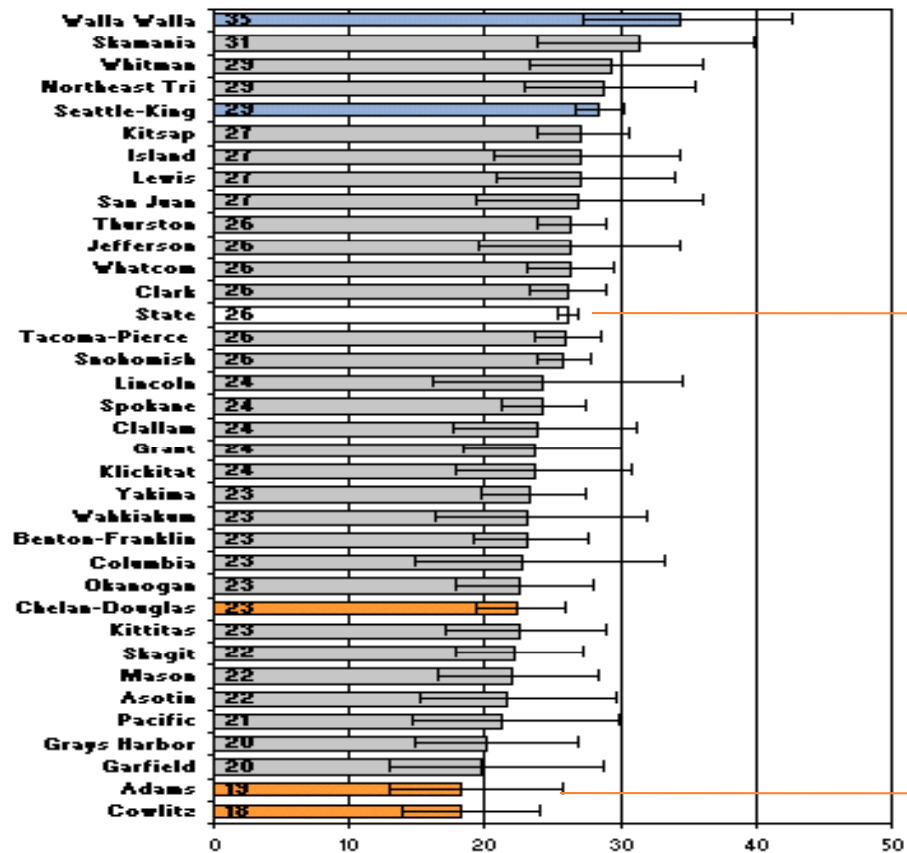
# Adults with Diabetes 2007-2008



State

Adams County

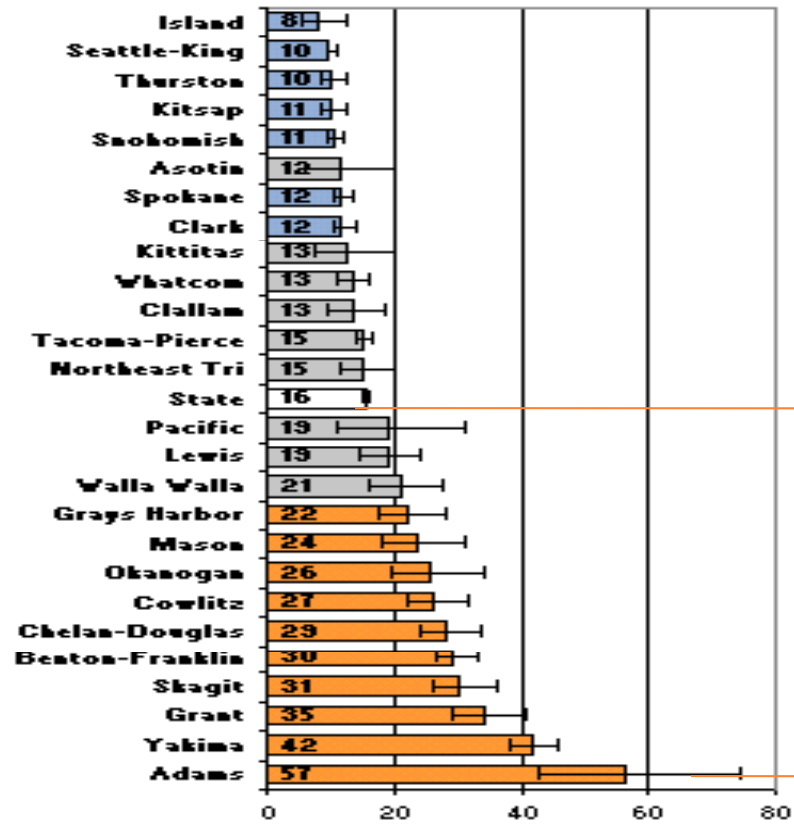
# Adult Fruit/Fruit Consumption 2007



State

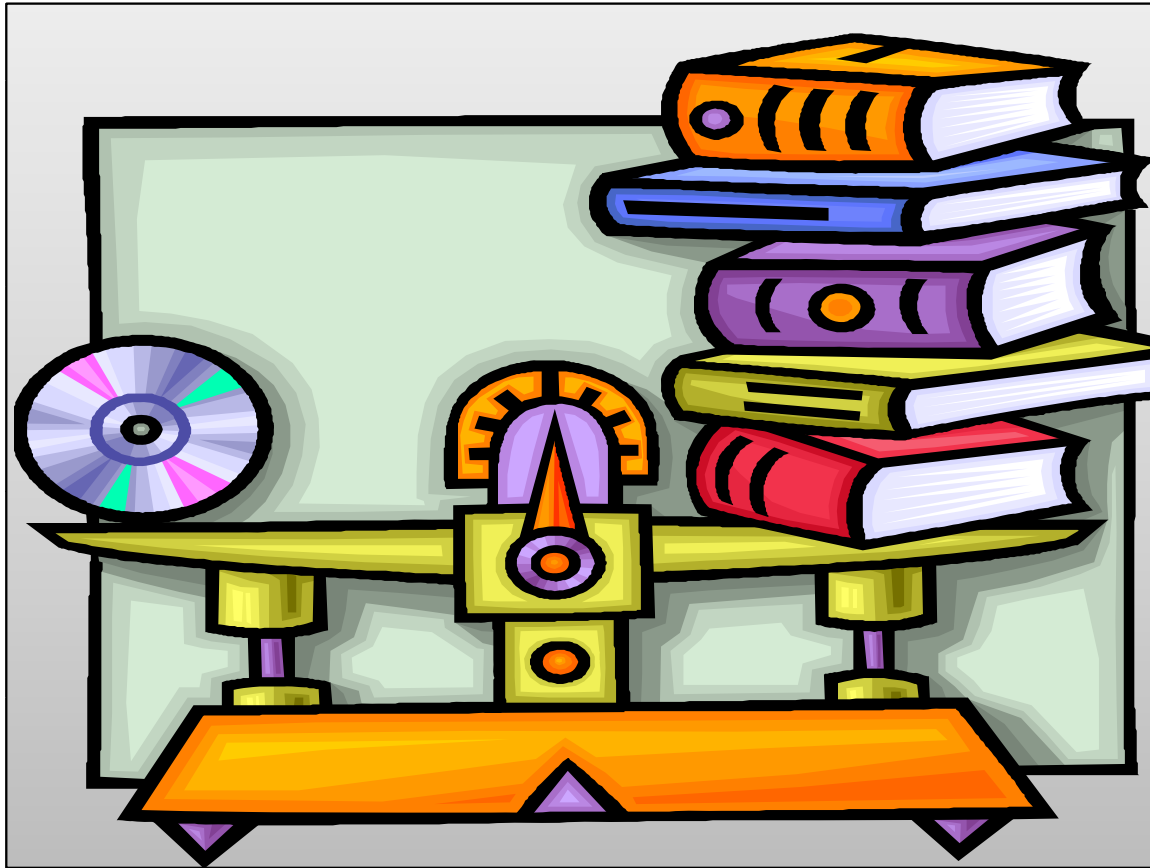
Adams County

# Teen Birth Rate 2006-2007



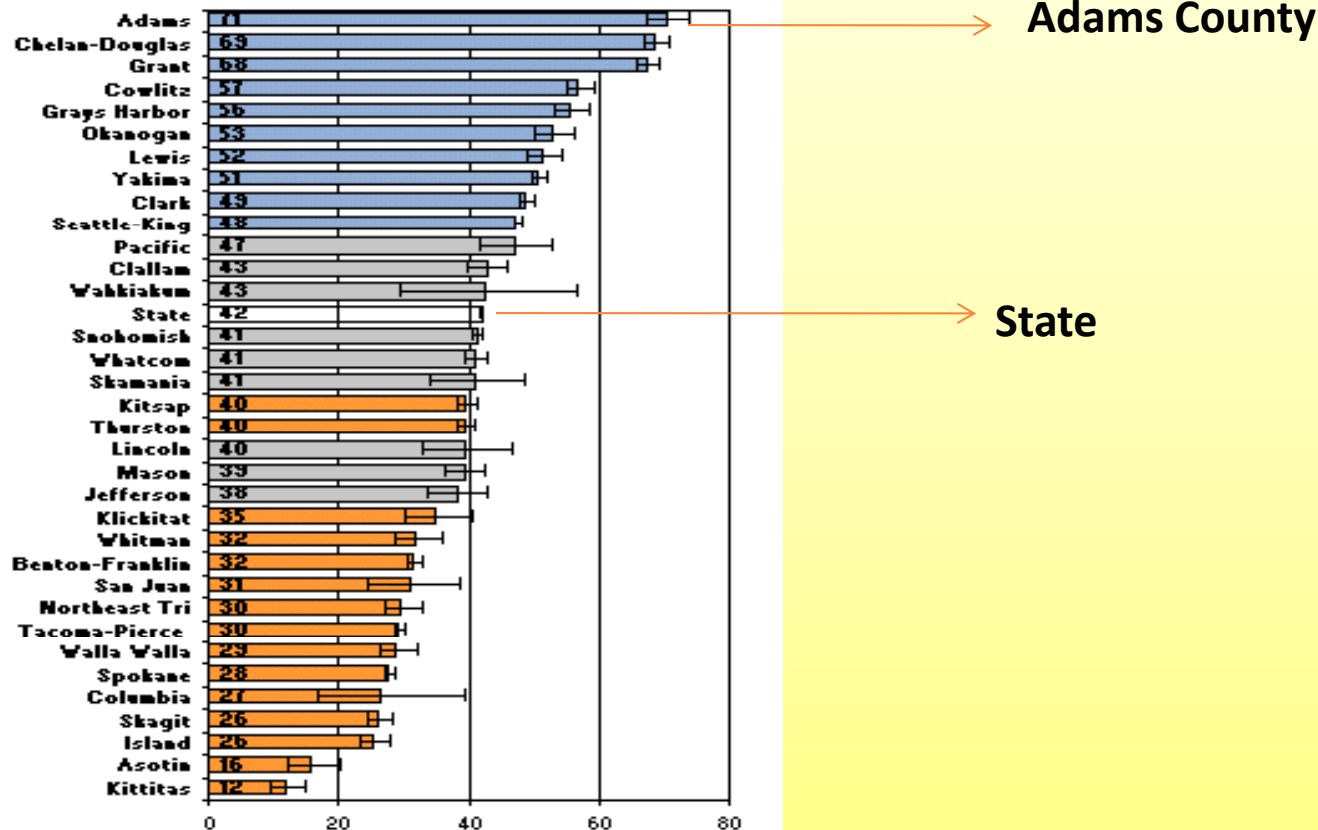
→ State

→ Adams County



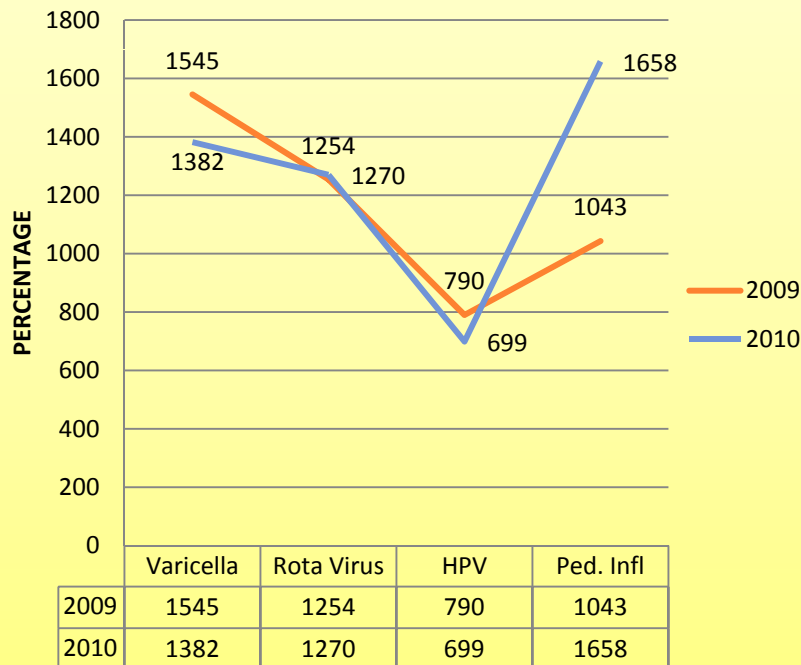
**Equal Or Better Than The State Average**

# Reported Child Immunizations 2008



# Under-Utilized Vaccines In Adams County 2010

**UNDER-UTILIZED VACCINES IN ADAMS COUNTY 2009/2010**



## COMPARISON 2009/2010

Varicella: 163 less in 2010

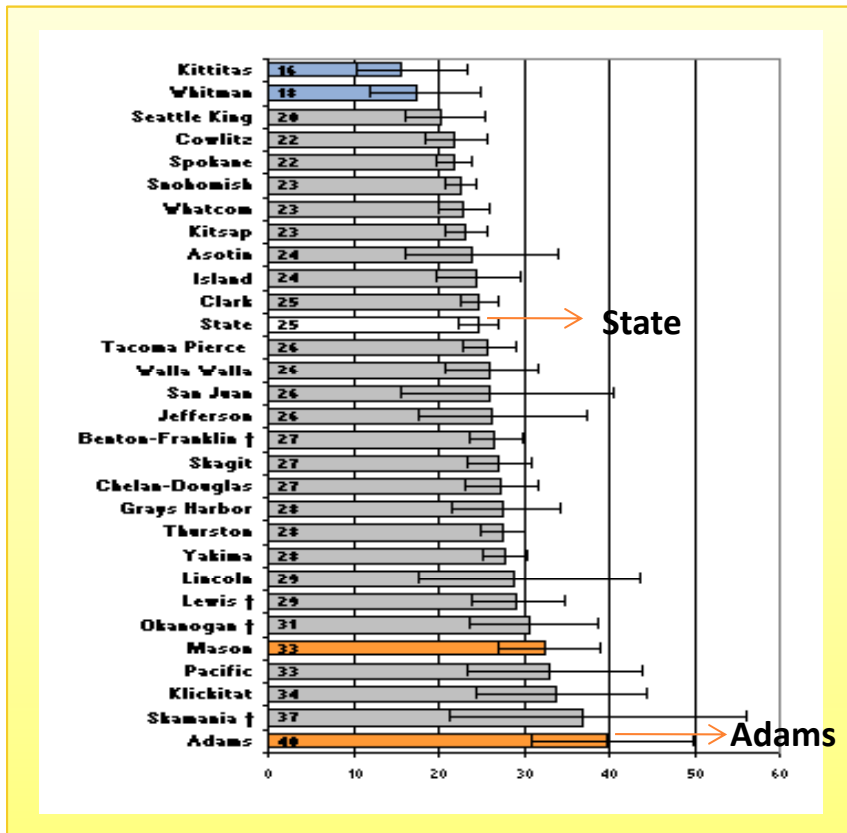
RotaVirus: 16 more in 2010

HPV: 91 less in 2010

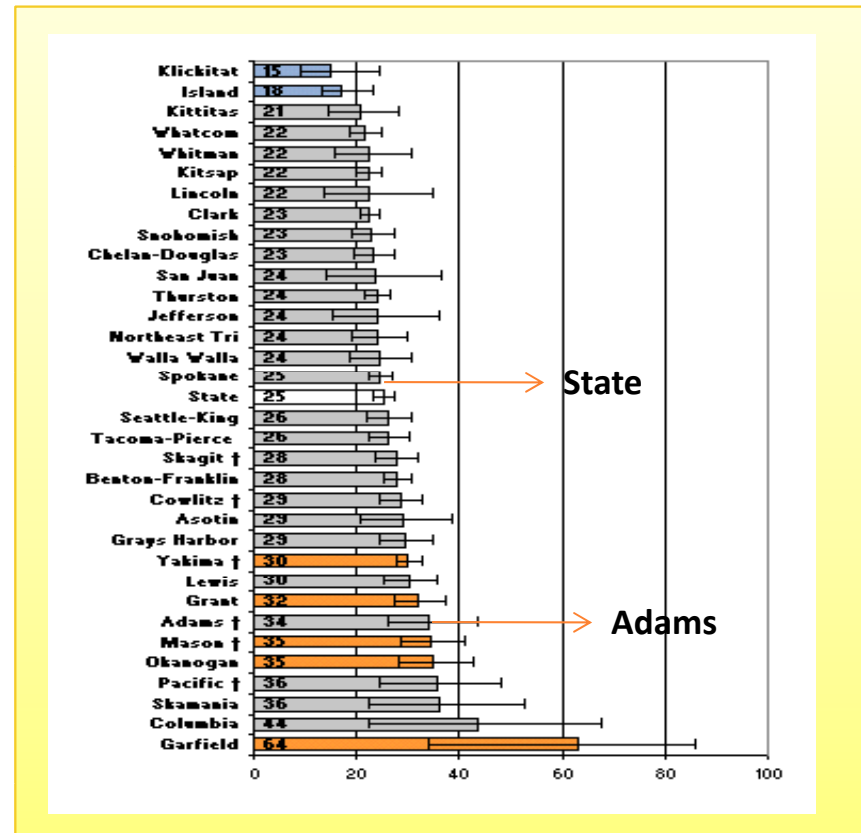
Ped. Infl. 615 more in 2010

# Teen Obesity

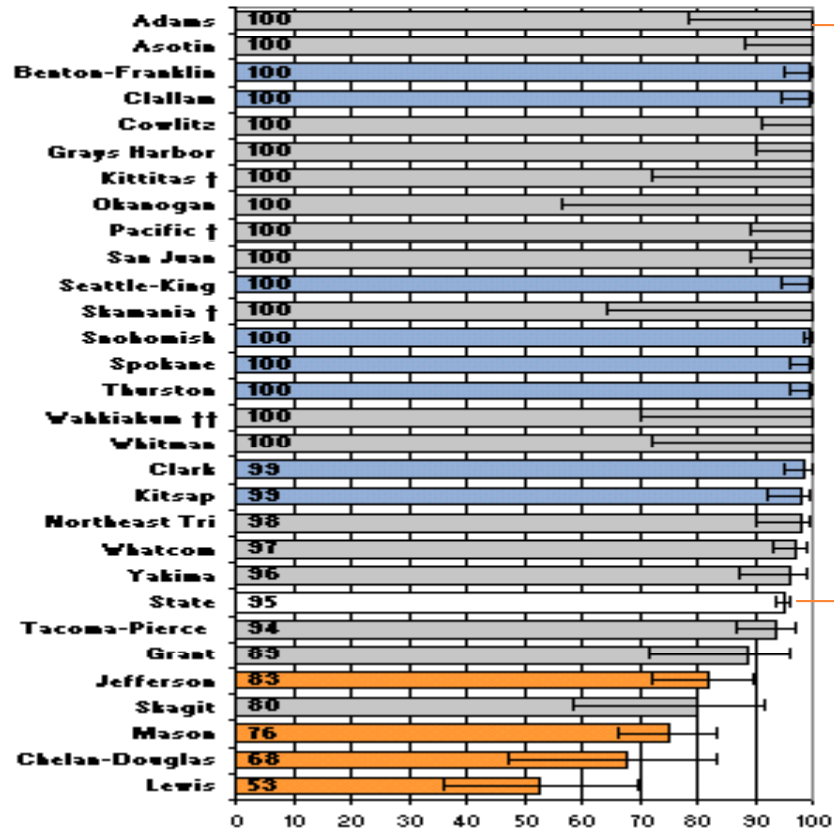
2006



2008



# On-Site Sewage System Corrections 2008



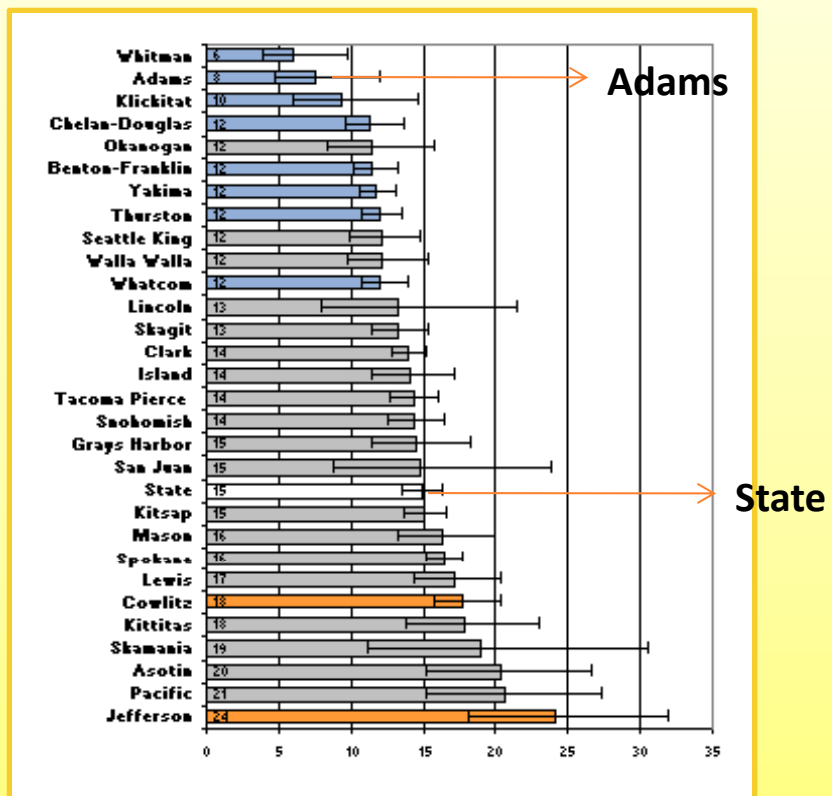
Adams County

State

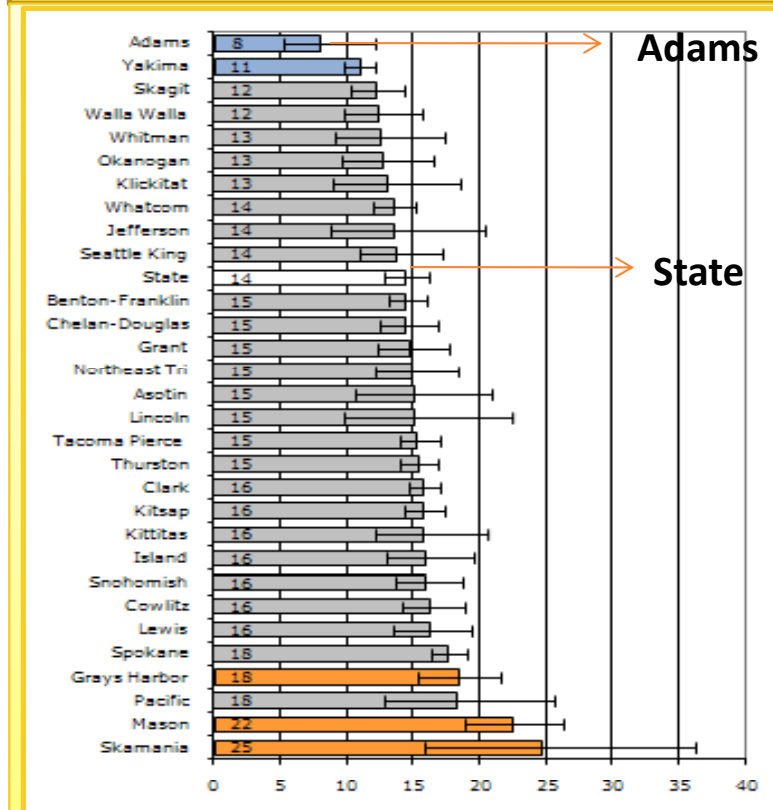


# Teen Cigarette Smoking

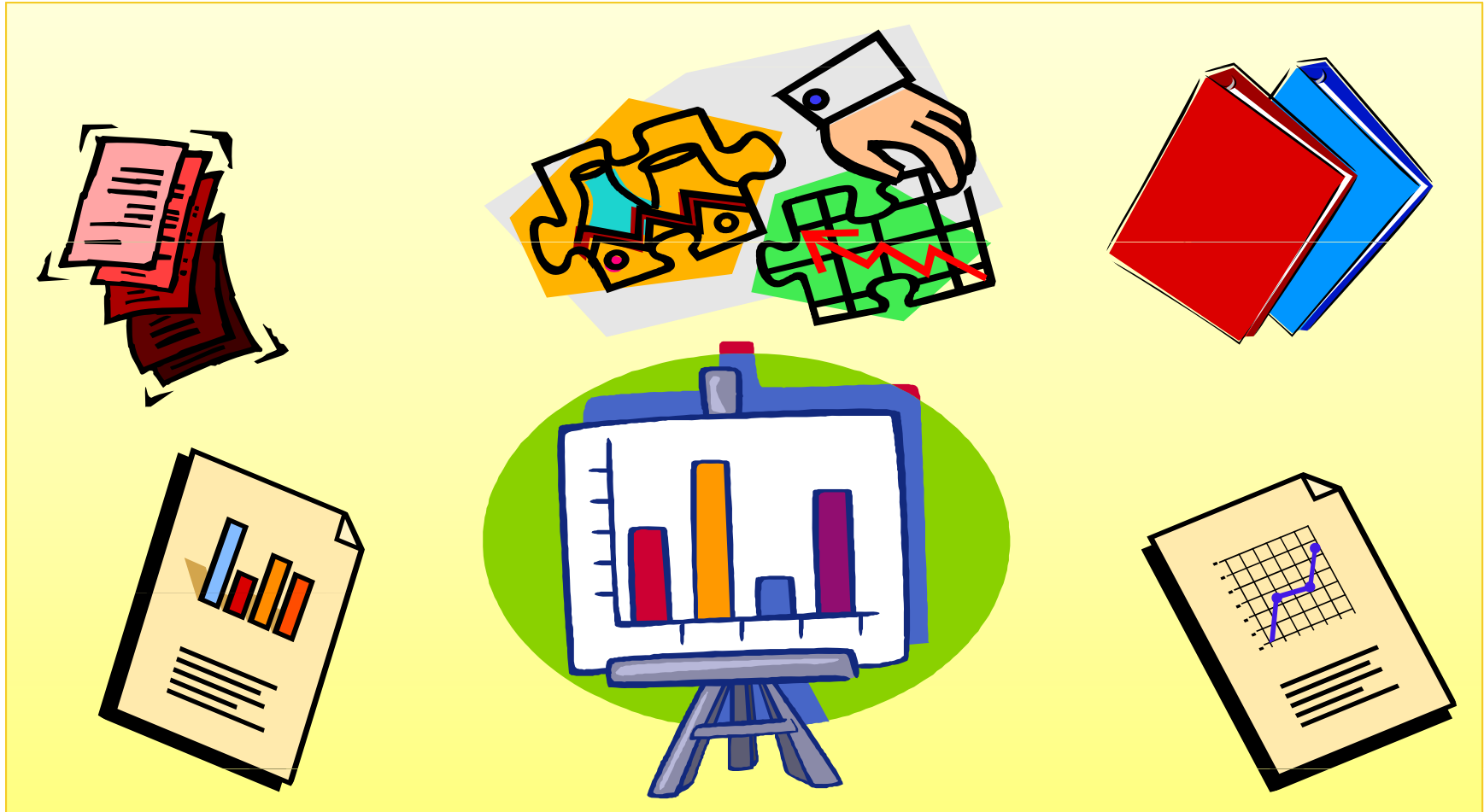
2006



2008



# Communicable Diseases Reported in Adams County



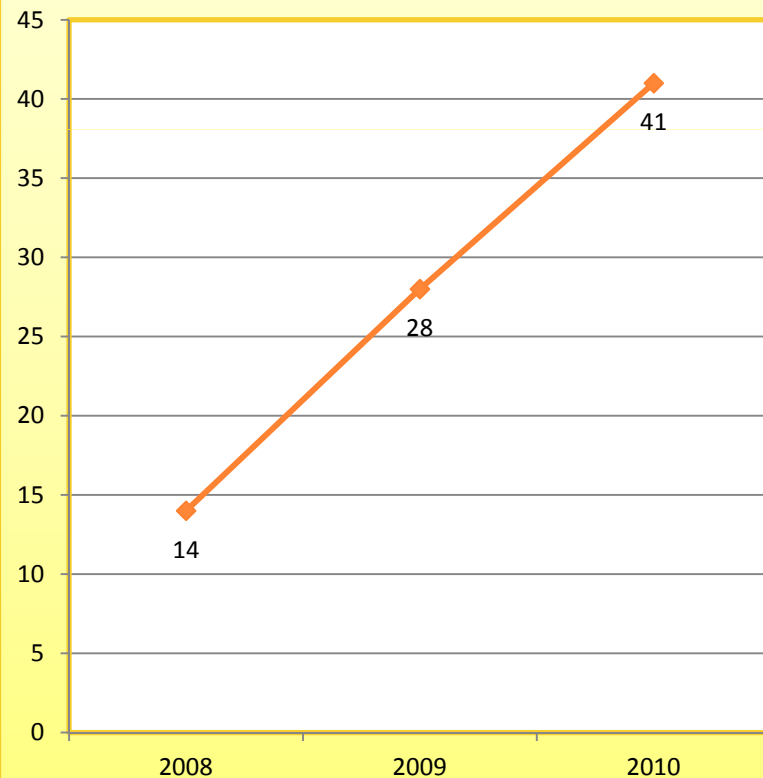
# Communicable Disease Reports

## Communicable Diseases Reported to Adams County 2008-2010

- Arboviral Disease
- Campylobacter
- Dog bites
- E-Coli
- Giardiasis
- Hantavirus
- Hepatitis B
- Hepatitis C
- Influenza
- Lyme Disease
- Meningococcal \*
- Mumps \*
- Pertussis \*
- Q-fever \*
- Salmonella
- Shigella

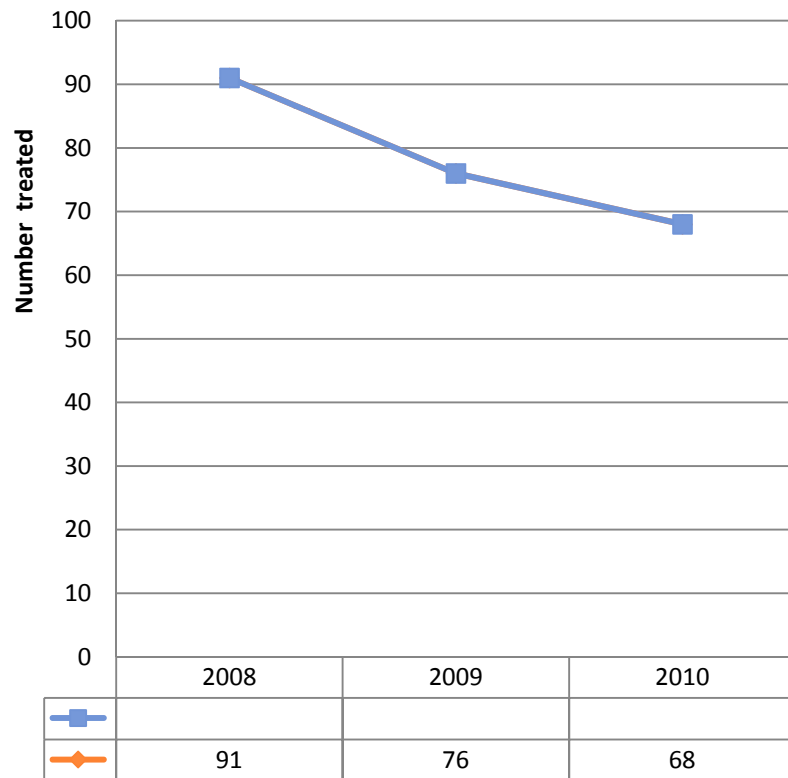
\* Diseases not reported in 2008 and 2009

## Increase In Reported Communicable Diseases



# Chlamydia Reports for 2009-2010

**Chlamydia Results  
2008-2010**



Adams County STD's decrease as ongoing reporting and support of local doctors in the EPT program continue.

EPT (Expedited Partner Treatment) initiated in Adams County in 2009.

# QUESTIONS?



Karen Palmer

Adams County Assessment Coordinator

(509)488-2031

[karenpa@co.adams.wa.us](mailto:karenpa@co.adams.wa.us)

