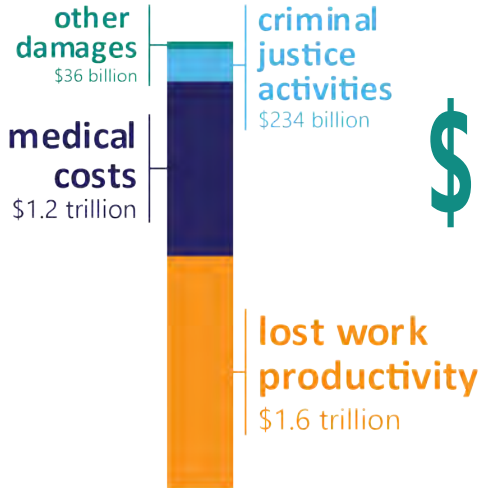


Sexual Violence Impacts Health Outcomes in Washington State



What is 'sexual violence'? ^{1a}

Sexual violence includes rape, being made to penetrate someone else, sexual coercion, unwanted sexual contact, and non-contact unwanted sexual experiences such as harassment and flashing.



The estimated lifetime cost of rape is

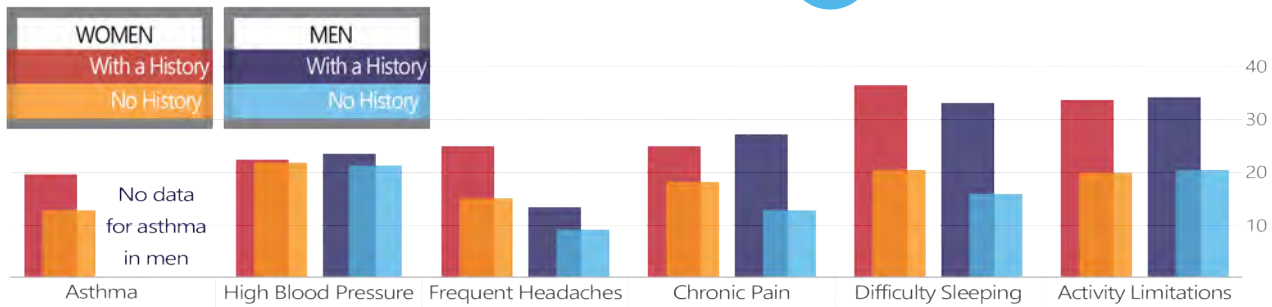
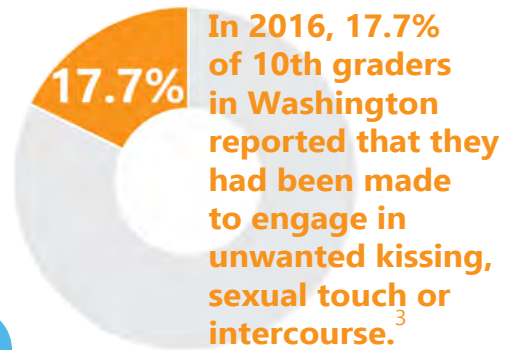
\$122,461 ²

per victim, for a total of nearly **\$3.1 trillion** for all victims in the United States. This includes over **\$1 trillion** in medical costs.

Reported lifetime sexual violence for Washingtonians ^{1b}

Men: 22%

Women: 45%



Physical and Mental Health Conditions Among Those With and Without a History of Contact Sexual Violence or Stalking by Any Perpetrator, or Physical Violence by an Intimate Partner Washington State 2010-2012 ^{1c}

National data shows that some sexual minority and racial/ethnic groups are disproportionately impacted by sexual violence. Washington does not have state-level sexual violence data by ethnicity or sexual orientation. ⁴



1 Smith, S.G., Chen, J., Basile, K.C., Gilbert, L.K., Merrick, M.T., Patel, N., Walling, M., & Jain, A. (2017). The National Intimate Partner and Sexual Violence Survey (NISVS): 2010-2012 State Report. Atlanta, GA: National Center for Injury Prevention and Control, Centers for Disease Control and Prevention. (a) p. 17 (b) tables 3.9, 3.14 (c) tables 7.3, 7.4

2 Peterson, C., DeGue, S., Florence, C., & Lokey, C. N. (2017). Lifetime economic burden of rape among US adults. American journal of preventive medicine, 52(6), 691-701. Based on 2011 data.

3 Washington State Healthy Youth Survey. Q129

4 Basile, K.C., DeGue, S., Jones, K., Freire, K., Dills, J., Smith, S.G., Raiford, J.L. (2016). STOP SV: A Technical Package to Prevent Sexual Violence. Atlanta, GA: National Center for Injury Prevention and Control, Centers for Disease Control and Prevention.