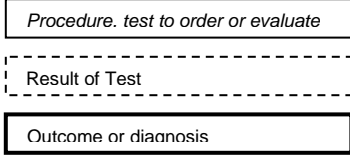


FOR EDUCATIONAL PURPOSES ONLY

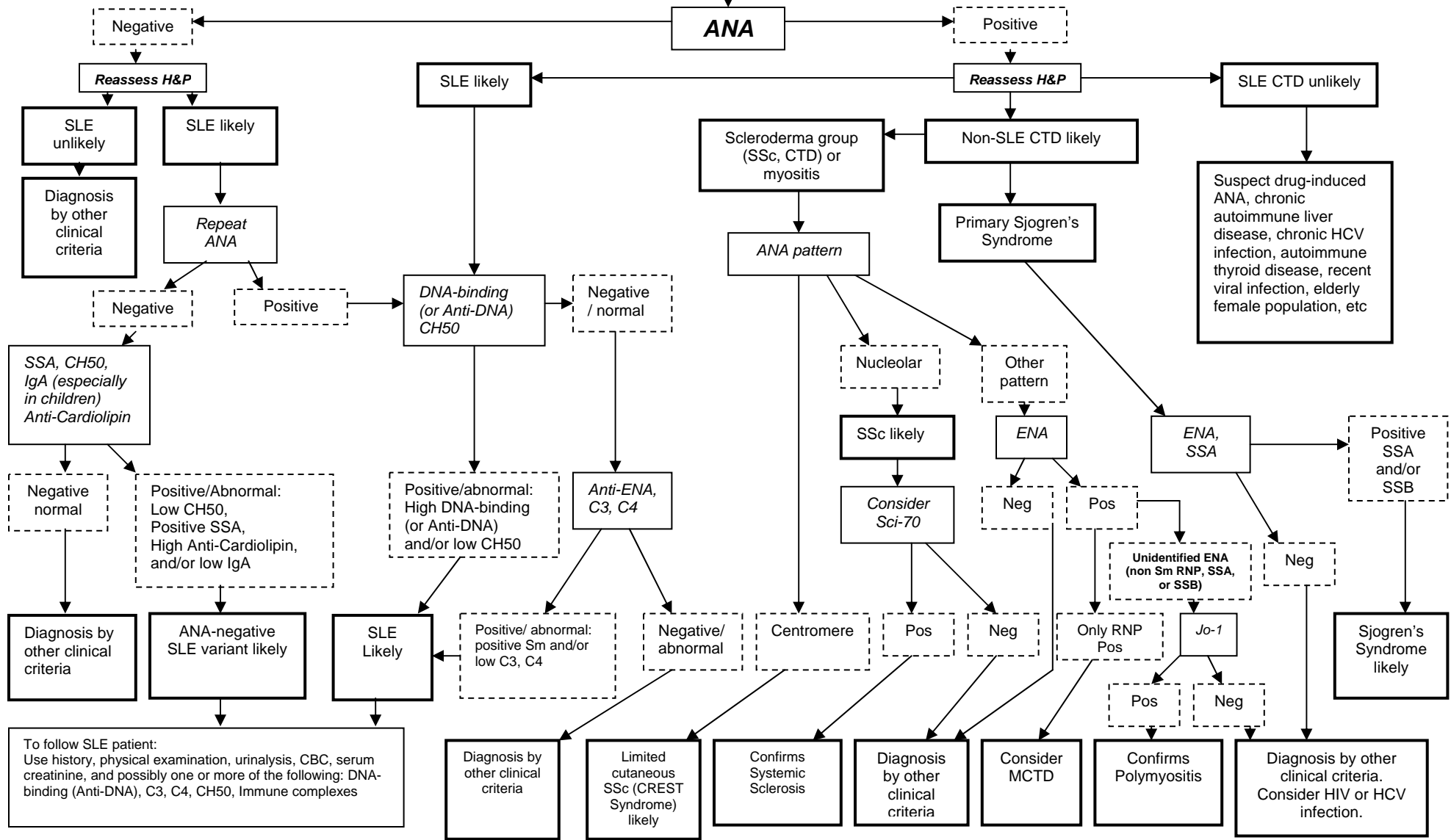
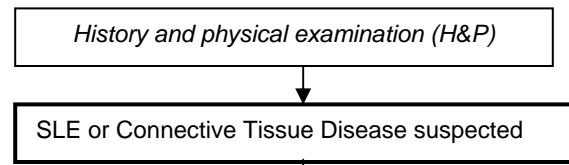
The individual clinician is in the best position to determine which tests are most appropriate for a particular patient.



ANA Testing Guidelines

Washington State Clinical Laboratory Advisory Council

ANA	Anti Nuclear Antibodies
ENA	Extractable Nuclear Antigen
SLE	Systemic Lupus Erythematosus
SSA	Sjogren's Syndrome A Antibody
SSB	Sjogren's Syndrome B Antibody
SSc	Systemic Sclerosis
CTD	Connective Tissue Disease
MCTD	Mixed Connective Tissue Disease
Sci-70	Antibody to Sci-70 (topoisomerase I)
Jo-1	Antibody to histidyl transfer RNA synthetase
Sm	Smith Antibody
CREST	Calcinosis, Raynaud's, Esophageal hypomotility, Sclerodactyly, Telangiectasia
RNP	Ribonucleoprotein Antibody



References:

1. Schiel WCJ, Jason M. The diagnostic associations of patients with antinuclear antibodies referred to a community rheumatologist. *J Rheumatology* 1989;16:782-5
2. Hollingsworth PN, Pummer SC, Dawkins, RL. Anti-Nuclear Antibodies. In: Peter JB, Schoenfeld Y, eds. *Autoantibodies*. Amsterdam: Elsevier Science B.V., 1996:74-90
3. Wener M. Immunologic laboratory testing in rheumatology. *Primary Care Rheumatol* 1991; 1(2):2-10
4. Wener MH, Hutchinson K. Anti-Nuclear Antibodies Group. *Handbook of Diagnostic Immunology Tests*. Seattle: Community Services, Department of Laboratory Medicine, University of Washington, 3-4.
5. Copywritten (modified from original) by Department of Laboratory Medicine, University of Washington and used by permission.