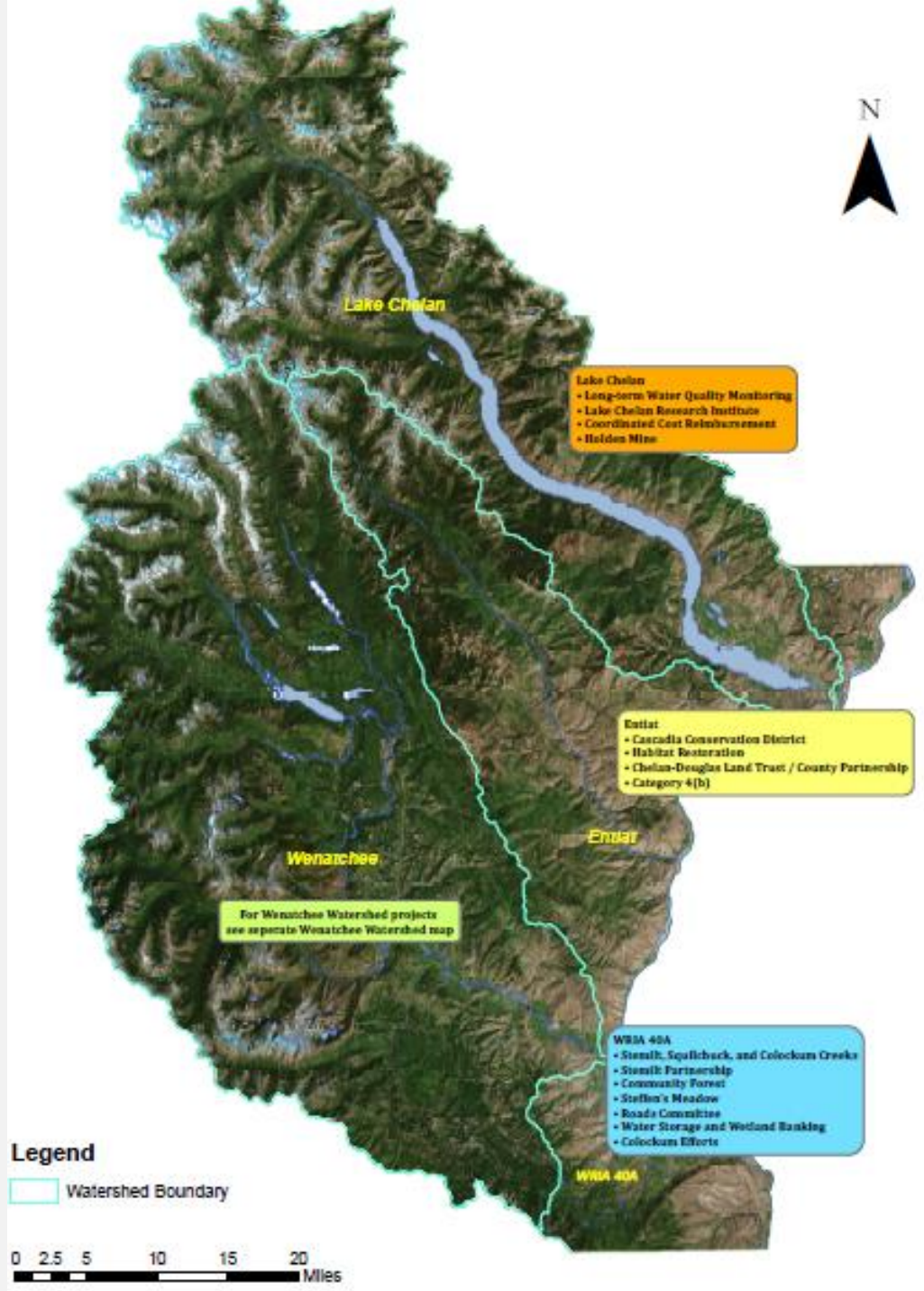


**INTEGRATED NATURAL RESOURCE
PLANNING
IN CHELAN COUNTY**

April 9, 2018

COLLABORATION ACROSS CHELAN COUNTY

- Lake Chelan Watershed Planning Unit
- Entiat Watershed Planning Unit
- Wenatchee Basin Efforts
- Stemilt Partnership



ICICLE WORK GROUP

- Improve instream flow
- Protect tribal and non-tribal fisheries
- Secure domestic water supply
- Sustain fish hatchery
- Protect agriculture and irrigation district needs

ICICLE WORK GROUP MEMBERS

- Ecology – OCR
- Chelan County
- Confederated Tribes of the Yakama Indian Nation
- Confederated Tribes of the Colville Reservation
- WA State Department of Fish and Wildlife
- Icicle Peshastin Irrigation District
- USFWS – LNFH
- Cascadia Conservation District
- City of Leavenworth
- NOAA Fisheries
- Cascade Orchard Irrigation Company
- Icicle Creek Watershed Council
- US Forest Service
- Trout Unlimited
- City of Cashmere
- US Bureau of Reclamation
- Agricultural Representatives
- WA Water Trust

LAKE CHELAN WATERSHED
PLANNING UNIT

- Protect and monitor water quality
- Ensure long-term water availability
- Improve habitat
- Protect drinking water supply
- Address possible AIS



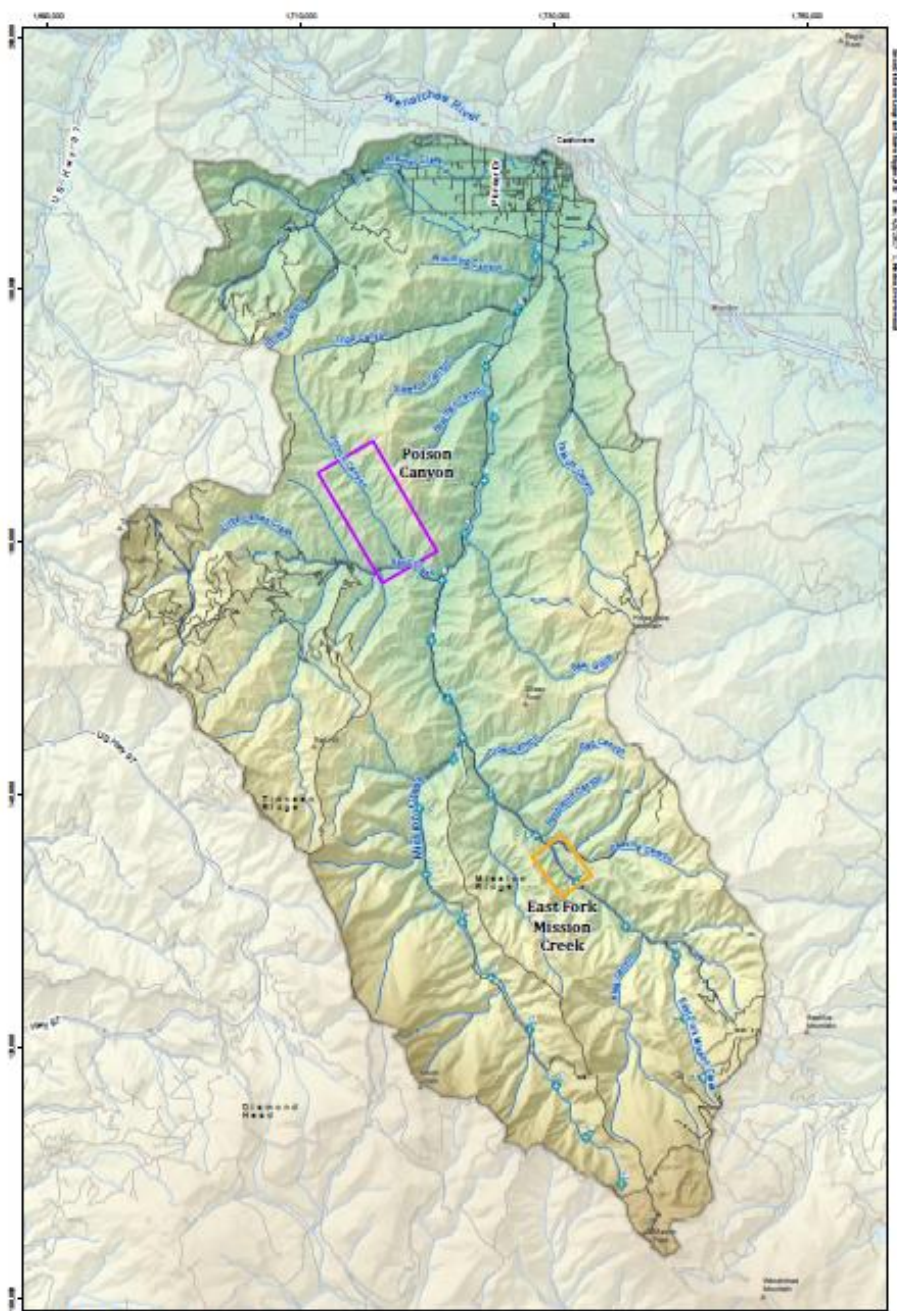
STEMILT PARTNERSHIP

- Protect water, wildlife and recreation
- Land protection
- Forest health
- Recreation planning



MISSION CREEK

- Watershed council
- Integrated approach:
 - Water supply
 - Water quality
 - Drinking water protection
 - Forest health
 - Agriculture
 - Habitat restoration
 - Recreation



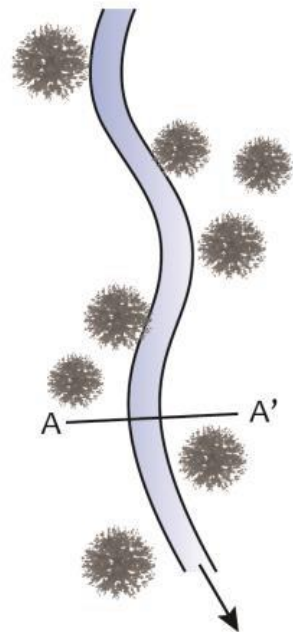
Map 1. Overview of watershed and study reach locations
Mission Creek, Chelan County, Washington

Data Sources: USGS 10m Digital Elevation Model, Stream Network and 800-foot boundaries from National Hydrography Dataset, Lambert conformal conic projection, NAD 1983, State Plane Coordinate System

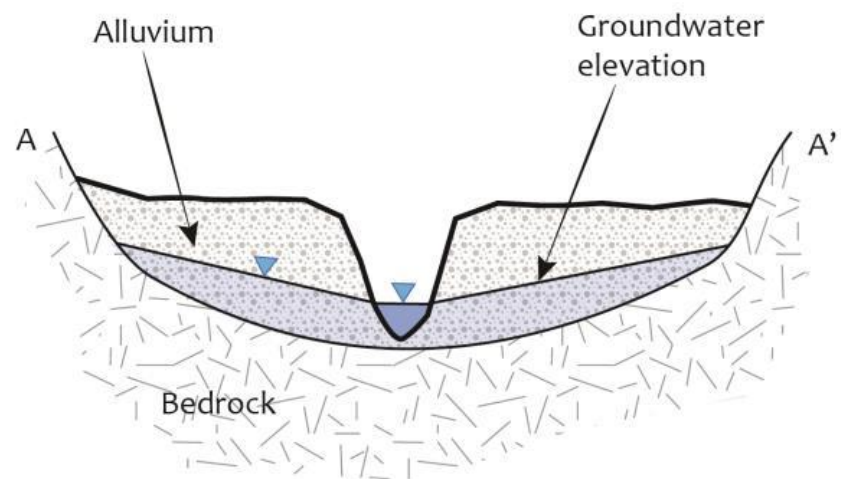


EXISTING

Plan View

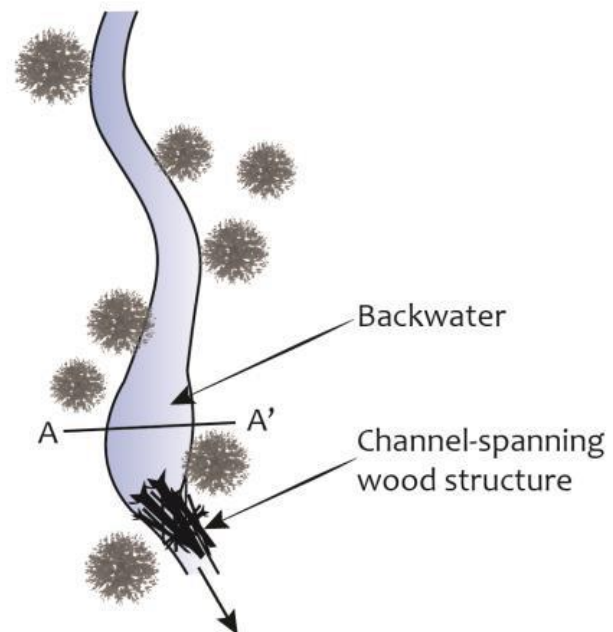


Cross-section View

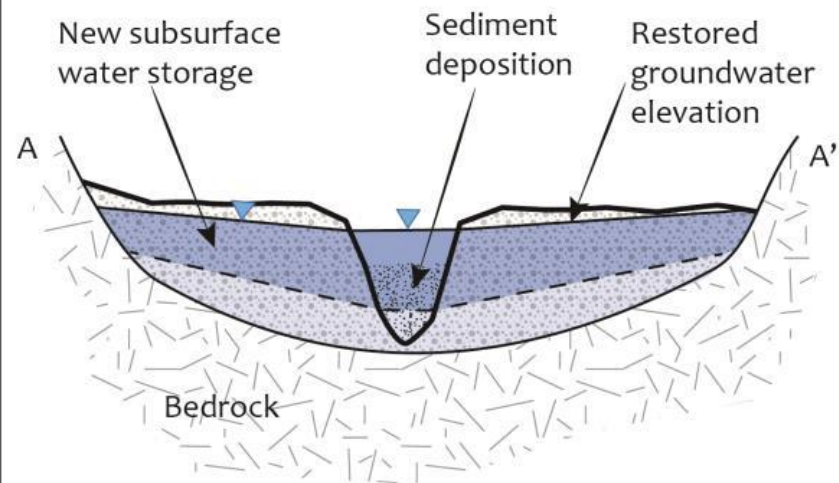


RESTORED

Plan View



Cross-section View









LESSONS LEARNED

- Integrated planning works
- Collaboration should be focused
- Multiple benefits can result from various protection and restoration initiatives
- Drinking water protection efforts may be under-represented