

Alden Bank

Annual Shellfish Growing Area Review



Prepared By: Patrick Biondo

Area: Alden Bank

Year Ending: December 31, 2024

Classification: Approved, Restricted, Prohibited

Activities in the Growing Area in 2024

Marine water stations 32 and 33, located in the Approved portion of the growing area, were sampled two times using the Adverse Pollution Condition (APC) criteria. This area is in Remote status. Stations 403, 404, 405, 406, and 427 were sampled seven times, adding one sampling event missing from the previous year's dataset. These stations are sampled using the Systematic Random Sampling (SRS) criteria. There is an approved relay from the Restricted portion of the growing area to the Shoal Bay Growing Area for scallop harvest.

Analytical Results of Water Samples

Table 1 summarizes the results of the last 30 samples collected from the area. This summary shows that all stations pass the NSSP water quality standard.

Change in Actual Pollution Sources that Impact the Growing Area

We currently have no information indicating that the area has any new sources of pollution.

Classification Status

- ☒ Well within the classification standards
- ☐ Meets standards, but threatened with downgrade in classification
- ☐ Fails to meet current classification standards

Remarks and Recommendations

Table 1 and 2 shows that the stations meet the NSSP water quality standard for an Approved classification and the area is correctly classified. Station 427 has achieved 30 samples and is undergoing internal and external review to classify approximately eight acres adjacent to Station 427 as Approved.

TABLE 1. Summary of Marine Water Data (SRS) for the Alden Bank Growing Area

Sampling Event Type: Regulatory

Maximum Number of Samples: 30

Tides Included: All

Station Number	Classification	Date Range	Range (FC/100mL)	Geomean (FC/100mL)	Est. 90 th Percentile (FC/100mL)	Meets Standard
403	Approved	12/11/2019 - 12/4/2024	1.7 - 350.0	2.4	8.5	Y
404	Approved	12/11/2019 - 12/4/2024	1.7 - 6.8	1.9	2.7	Y
405	Approved	12/11/2019 - 12/4/2024	1.7 - 7.8	1.8	2.6	Y
406	Approved	12/11/2019 - 12/4/2024	1.7 - 7.8	1.9	3.1	Y
427	Unclassified	12/11/2019 - 12/4/2024	1.7 - 7.8	1.8	2.6	Y

The standard for approved shellfish growing waters is fecal coliform geometric mean not greater than 14 organisms/ 100 mL with an estimated 90th percentile not greater than 43 organisms/ 100 mL. The above table shows bacteriological results in relation to program standards.

TABLE 2. Summary of Marine Water Data (APC) of the Alden Bank Growing Area

Sampling Event Type: Regulatory

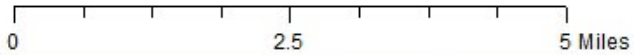
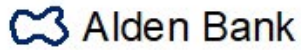
Maximum Number of Samples: 30

Tides Included: All

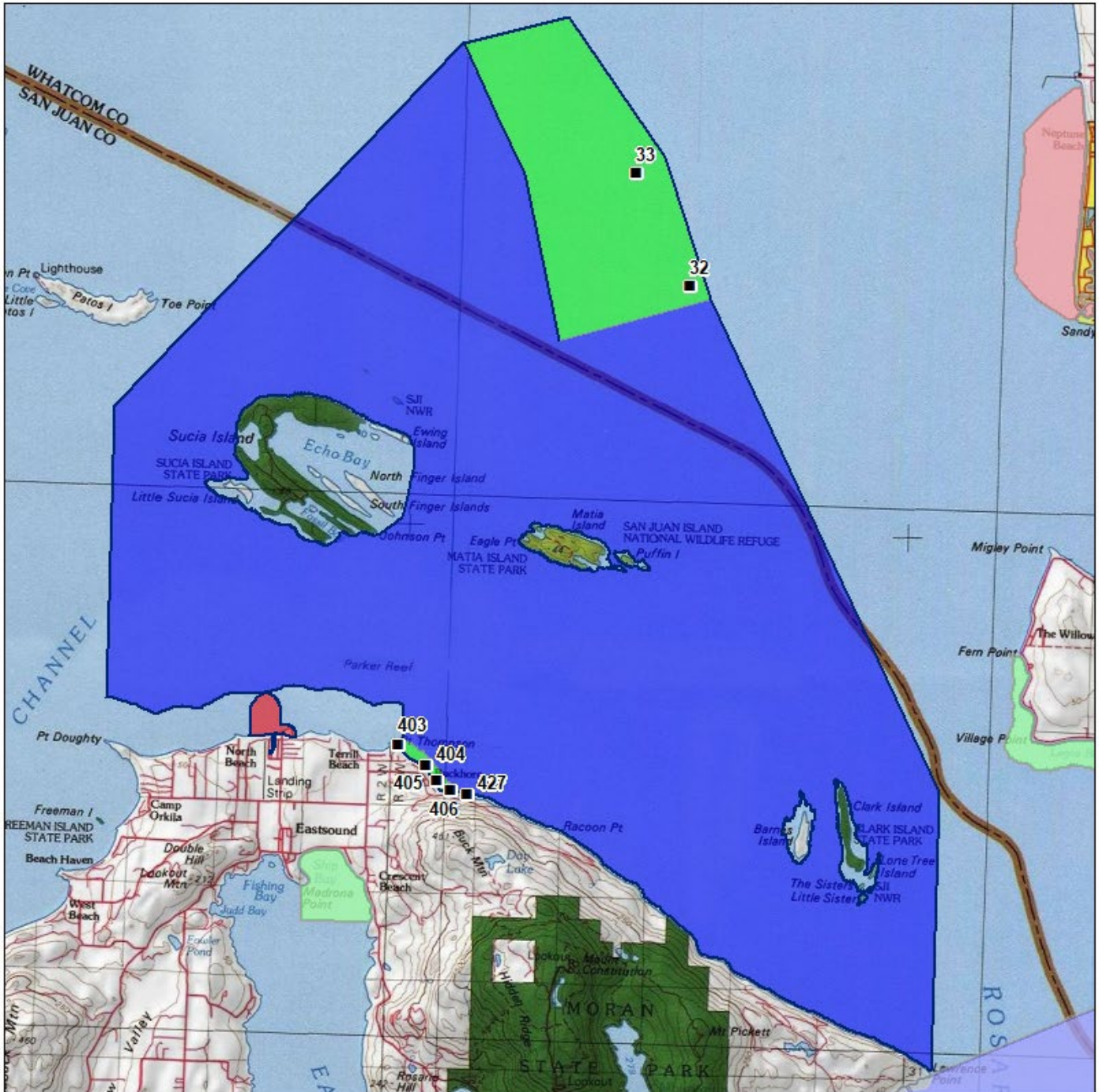
Station Number	Classification	Date Range	Range (FC/100mL)	Geomean (FC/100mL)	% of Samples >43 FC/100mL	Meets Standard
32	Approved	5/10/2011 - 10/8/2024	1.7 - 2.0	1.7	0.00	Y
33	Approved	5/10/2011 - 10/8/2024	1.7 - 1.8	1.7	0.00	Y

The standard for approved shellfish growing waters is fecal coliform geometric mean not greater than 14 organisms / 100 mL with not more than 10 percent greater than 43 organisms / 100 mL. The above table shows bacteriological results in relation to program standards.

MAP 1. Alden Bank Growing Area

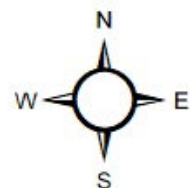


Date Updated: 1/13/2022



Classification

Sampling Stations



* Some sampling stations are highlighted with grey box for ease of reading.