

# Budd Inlet

## Annual Shellfish Growing Area Review



Prepared By: Merita Trohimovich

Area: Budd Inlet

Year Ending: December 31, 2023

Classification: Approved, Prohibited

### Activities in the Growing Area in 2023

The growing area was sampled six times in accordance with the National Shellfish Sanitation Program (NSSP) Systematic Random Sampling criteria. A shoreline survey was conducted in the Prohibited portion of the growing area due to harvest request for subtidal geoduck tracts. A previously identified on-site sewage system failure on a parcel in Closed status was considered an ongoing Direct Impact and no Indirect Impacts were identified. During September, 232 acres were reclassified from Prohibited to Approved. The change was based on the evaluation of point sources, shoreline conditions, and marine water quality at station 873 and 874 meeting Approved standards.

Thurston County Environmental Health received grant funding from the National Estuary Program to continue enhanced on-site sewage system O&M in the Approved portion of the growing area.

### Analytical Results of Water Samples

Table 1 summarizes the results of the last 30 samples collected from the area. This summary shows that all stations pass the NSSP water quality standard.

### Change in Actual Pollution Sources that Impact the Growing Area

We currently have no information indicating that the area has new sources of pollution.

### Classification Status

- Well within the classification standards
- Meets standards, but threatened with downgrade in classification
- Fails to meet current classification standards

### Remarks and Recommendations

Table 1 shows that all stations meet the NSSP water quality standard for an Approved classification and the area is correctly classified.

**TABLE 1. Summary of Marine Water Data (SRS) for the Budd Inlet Growing Area**

Sampling Event Type: Regulatory

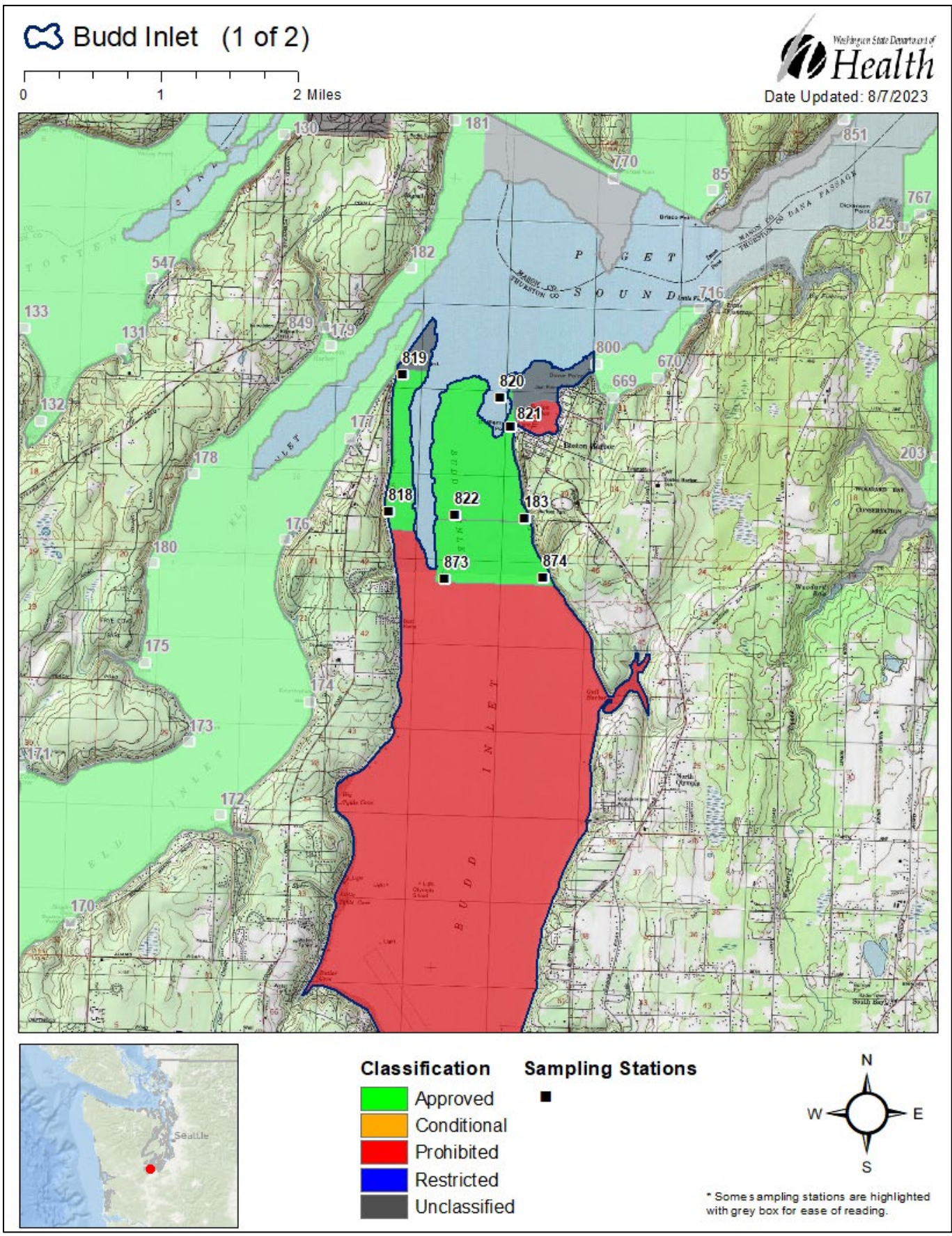
Maximum Number of Samples: 30

Tides Included: All

Station Number	Classification	Date Range	Range (FC/100mL)	Geomean (FC/100mL)	Est. 90 <sup>th</sup> Percentile (FC/100mL)	Meets Standard
183	Approved	3/11/2019 -12/18/2023	1.7-79.0	2.4	7.0	Y
818	Approved	3/11/2019 -12/18/2023	1.7-49.0	2.2	6.4	Y
819	Approved	3/11/2019 -12/18/2023	1.7-4.5	1.8	2.3	Y
820	Approved	3/11/2019 -12/18/2023	1.7-11.0	2.0	3.3	Y
821	Approved	3/11/2019 -12/18/2023	1.7-33.0	2.4	6.3	Y
822	Approved	3/11/2019 -12/18/2023	1.7-23.0	2.0	4.0	Y
873	Approved	3/11/2019 -12/18/2023	1.7-13.0	1.9	3.2	Y
874	Approved	3/11/2019 -12/18/2023	1.7-49.0	2.6	7.7	Y

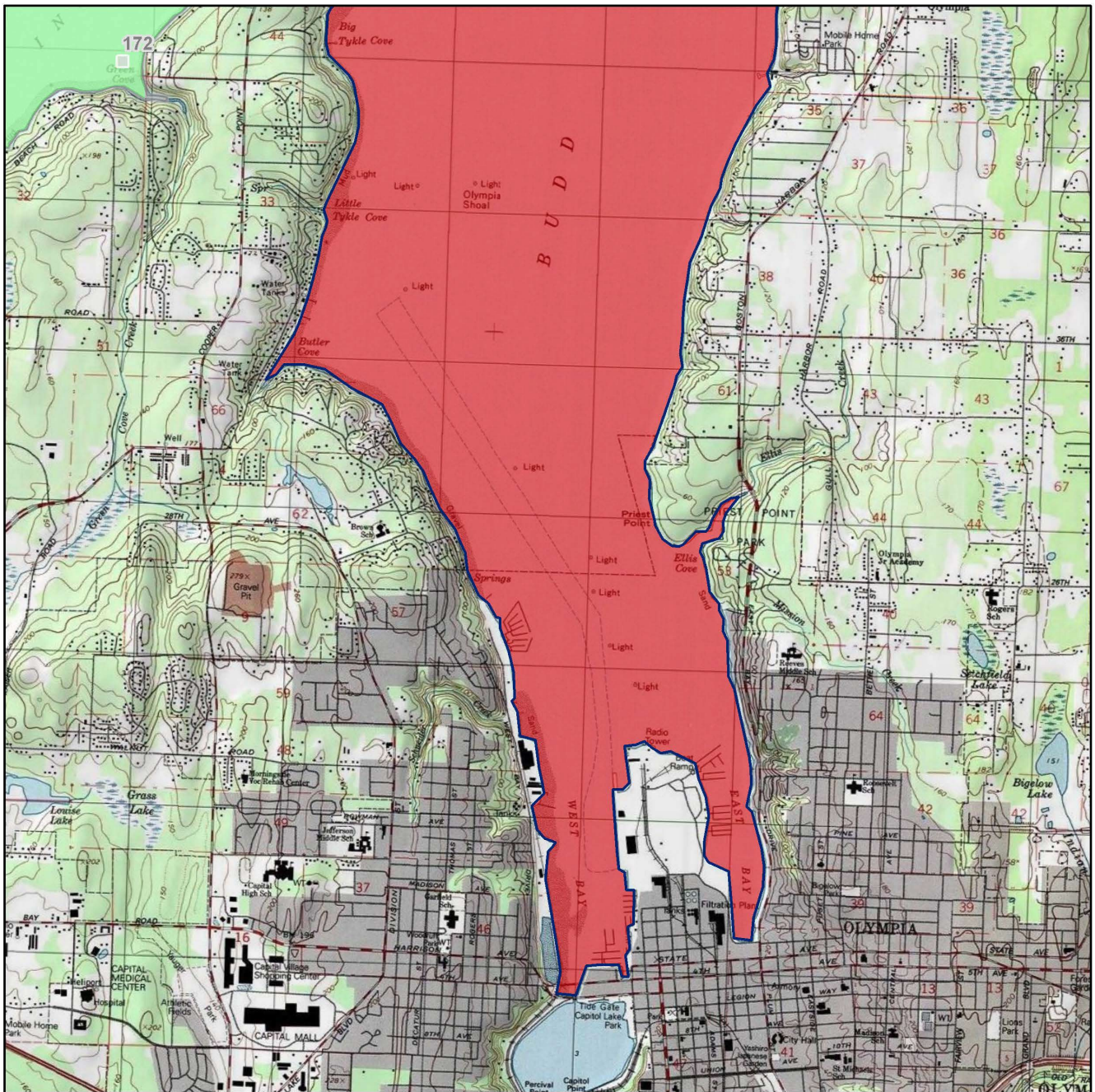
The standard for approved shellfish growing waters is fecal coliform geometric mean not greater than 14 organisms/ 100 mL with an estimated 90th percentile not greater than 43 organisms/ 100 mL. The above table shows bacteriological results in relation to program standards.

MAP 1. Budd Inlet Growing Area (1 of 2)

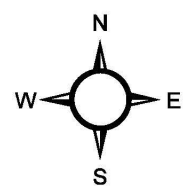


MAP 2. Budd Inlet Growing Area (2 of 2)

 Budd Inlet (2 of 2)



Classification	Sampling Stations
 Approved	
 Conditional	
 Prohibited	
 Restricted	
 Unclassified	



\* Some sampling stations are highlighted with grey box for ease of reading.