

# Burrows Bay

## Annual Shellfish Growing Area Review



Prepared By: Casey Deligeannis

Area: Burrows Bay

Year Ending: December 31, 2024

Classification: Restricted

### Activities in the Growing Area in 2024

The growing area is classified for the subtidal harvest of scallops only. Product harvested from the growing area was relayed to a grow-out site in Shoal Bay. Relay activities are approved from November 1 through April 30 each year.

### Analytical Results of Water Samples

A marine station (102) is located in the growing area solely for the purposes of approving relay harvest activities. The station is not shown on the growing area map. No water samples are collected from this station.

### Change in Actual Pollution Sources that Impact the Growing Area

We currently have no information indicating that the area has new sources of pollution.

### Classification Status

- Well within the classification standards
- Meets standards, but threatened with downgrade in classification
- Fails to meet current classification standards

### Remarks and Recommendations

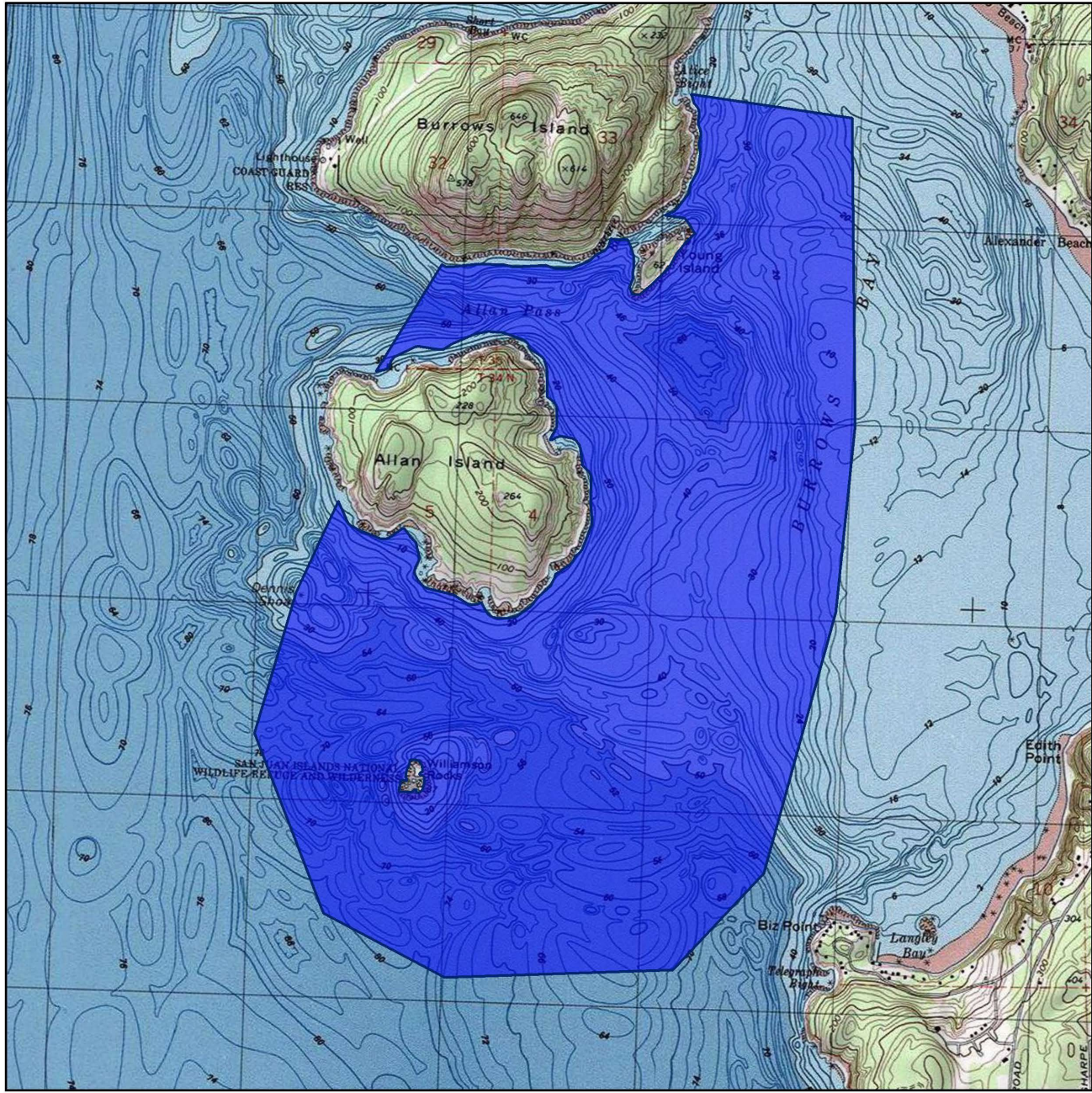
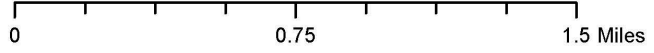
The area meets the appropriate standards to be classified Restricted.







**MAP 1. Burrows Bay Growing Area**

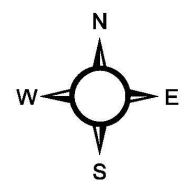
 **Burrows Bay**



Date Updated: 7/11/2018



Classification		Sampling Stations
	Approved	
	Conditional	
	Prohibited	
	Restricted	
	Unclassified	



\* Some sampling stations are highlighted with grey box for ease of reading.