

Colvos Passage

Annual Shellfish Growing Area Review



Prepared By: Michael Ulrich

Area: Colvos Passage

Year Ending: December 31, 2024

Classification: Approved, Prohibited

Activities in the Growing Area in 2024

The growing area was sampled six times in accordance with the National Shellfish Sanitation Program (NSSP) Systematic Random Sampling criteria. Public Health-Seattle & King County implemented a pollution identification and correction and enhanced on-site sewage system project in the northern Prohibited area using NEP grant funds.

Analytical Results of Water Samples

Table 1 summarizes the results of the last 30 samples collected from the area. This summary shows that all stations pass the NSSP water quality standard.

Change in Actual Pollution Sources that Impact the Growing Area

We currently have no information indicating that the area has new sources of pollution.

Classification Status

- ☒ Well within the classification standards
- ☐ Meets standards, but threatened with downgrade in classification
- ☐ Fails to meet current classification standards

Remarks and Recommendations

Table 1 shows that all stations meet the NSSP water quality standard for an Approved classification and the area is correctly classified.

TABLE 1. Summary of Marine Water Data (SRS) for the Colvos Passage Growing Area

Sampling Event Type: Regulatory

Maximum Number of Samples: 30

Tides Included: All

Station Number	Classification	Date Range	Range (FC/100mL)	Geomean (FC/100mL)	Est. 90 th Percentile (FC/100mL)	Meets Standard
353	Approved	1/22/2020 - 11/13/2024	1.7 - 4.5	1.8	2.3	Y
354	Approved	1/22/2020 - 11/13/2024	1.7 - 14.0	1.9	3.1	Y
355	Approved	1/22/2020 - 11/13/2024	1.7 - 11.0	1.8	2.8	Y
356	Approved	1/22/2020 - 11/13/2024	1.7 - 6.8	1.9	2.8	Y
357	Approved	1/22/2020 - 11/13/2024	1.7 - 540.0	2.8	17.1	Y
358	Approved	1/22/2020 - 11/13/2024	1.7 - 23.0	2.2	5.0	Y
359	Approved	1/22/2020 - 11/13/2024	1.7 - 2.0	1.8	1.9	Y
563	Approved	1/22/2020 - 11/13/2024	1.7 - 7.8	1.9	3.1	Y
587	Approved	1/22/2020 - 11/13/2024	1.7 - 23.0	2.2	4.7	Y
588	Approved	1/22/2020 - 11/13/2024	1.7 - 13.0	1.9	3.0	Y
590	Approved	1/22/2020 - 11/13/2024	1.7 - 23.0	2.3	4.9	Y
592	Approved	1/22/2020 - 11/13/2024	1.7 - 49.0	2.6	8.6	Y
659	Approved	1/22/2020 - 11/13/2024	1.7 - 79.0	3.2	12.8	Y
660	Approved	1/22/2020 - 11/13/2024	1.7 - 79.0	2.1	5.5	Y
725	Approved	1/22/2020 - 11/13/2024	1.7 - 11.0	2.2	4.3	Y
726	Approved	1/22/2020 - 11/13/2024	1.7 - 7.8	1.9	2.8	Y
727	Approved	1/22/2020 - 11/13/2024	1.7 - 31.0	1.9	3.8	Y
728	Approved	1/22/2020 - 11/13/2024	1.7 - 4.5	1.8	2.3	Y
729	Approved	1/22/2020 - 11/13/2024	1.7 - 17.0	1.9	3.3	Y
730	Approved	1/22/2020 - 11/13/2024	1.7 - 17.0	2.0	3.8	Y
732	Approved	1/22/2020 - 11/13/2024	1.7 - 33.0	2.0	4.1	Y
733	Approved	1/22/2020 - 11/13/2024	1.7 - 23.0	2.1	4.3	Y
734	Approved	1/22/2020 - 11/13/2024	1.7 - 170.0	2.6	10.1	Y
736	Approved	1/22/2020 - 11/13/2024	1.7 - 7.8	1.8	2.6	Y
737	Approved	1/22/2020 - 11/13/2024	1.7 - 4.5	1.8	2.5	Y
738	Approved	1/22/2020 - 11/13/2024	1.7 - 7.8	2.0	3.3	Y
739	Approved	1/22/2020 - 11/13/2024	1.7 - 33.0	2.3	5.6	Y
743	Approved	1/22/2020 - 11/13/2024	1.7 - 4.5	1.8	2.3	Y
840	Approved	1/22/2020 - 11/13/2024	1.7 - 130.0	2.2	6.2	Y
589	Prohibited	1/22/2020 - 11/13/2024	1.7 - 49.0	2.4	6.6	Y
740	Prohibited	1/22/2020 - 11/13/2024	1.7 - 79.0	2.3	6.0	Y

Station Number	Classification	Date Range	Range (FC/100mL)	Geomean (FC/100mL)	Est. 90 th Percentile (FC/100mL)	Meets Standard
741	Prohibited	1/22/2020 - 11/13/2024	1.7 - 23.0	2.2	4.6	Y
742	Prohibited	1/22/2020 - 11/13/2024	1.7 - 11.0	1.8	2.8	Y
731	Unclassified	1/22/2020 - 11/13/2024	1.7 - 11.0	2.2	4.4	Y
735	Unclassified	1/22/2020 - 11/13/2024	1.7 - 120.0	2.0	5.4	Y

The standard for approved shellfish growing waters is fecal coliform geometric mean not greater than 14 organisms/ 100 mL with an estimated 90th percentile not greater than 43 organisms/ 100 mL. The above table shows bacteriological results in relation to program standards.

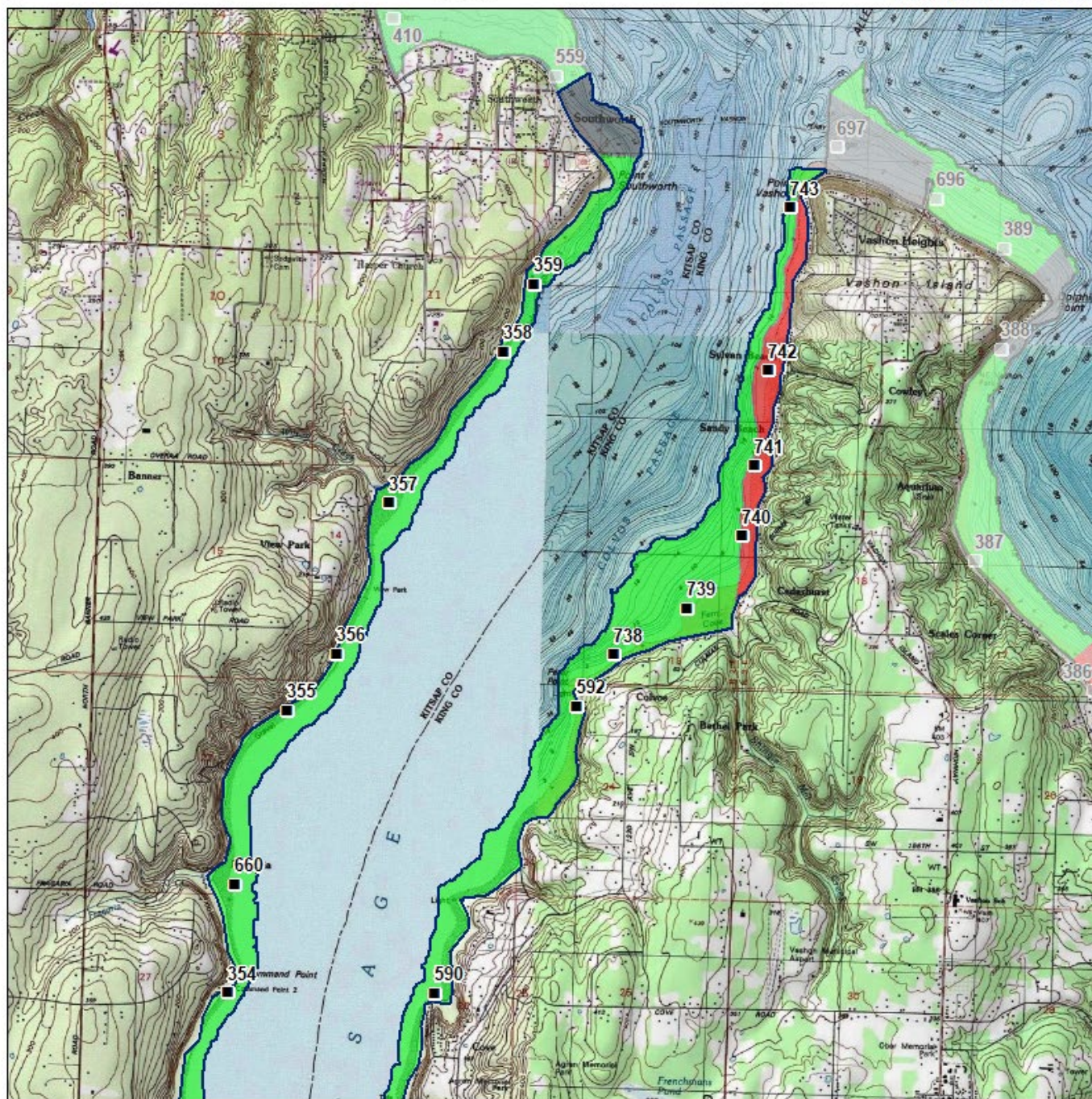
MAP 1. Colvos Passage Growing Area

Colvos Passage (1 of 3)

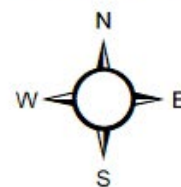


Date Updated: 4/30/2020

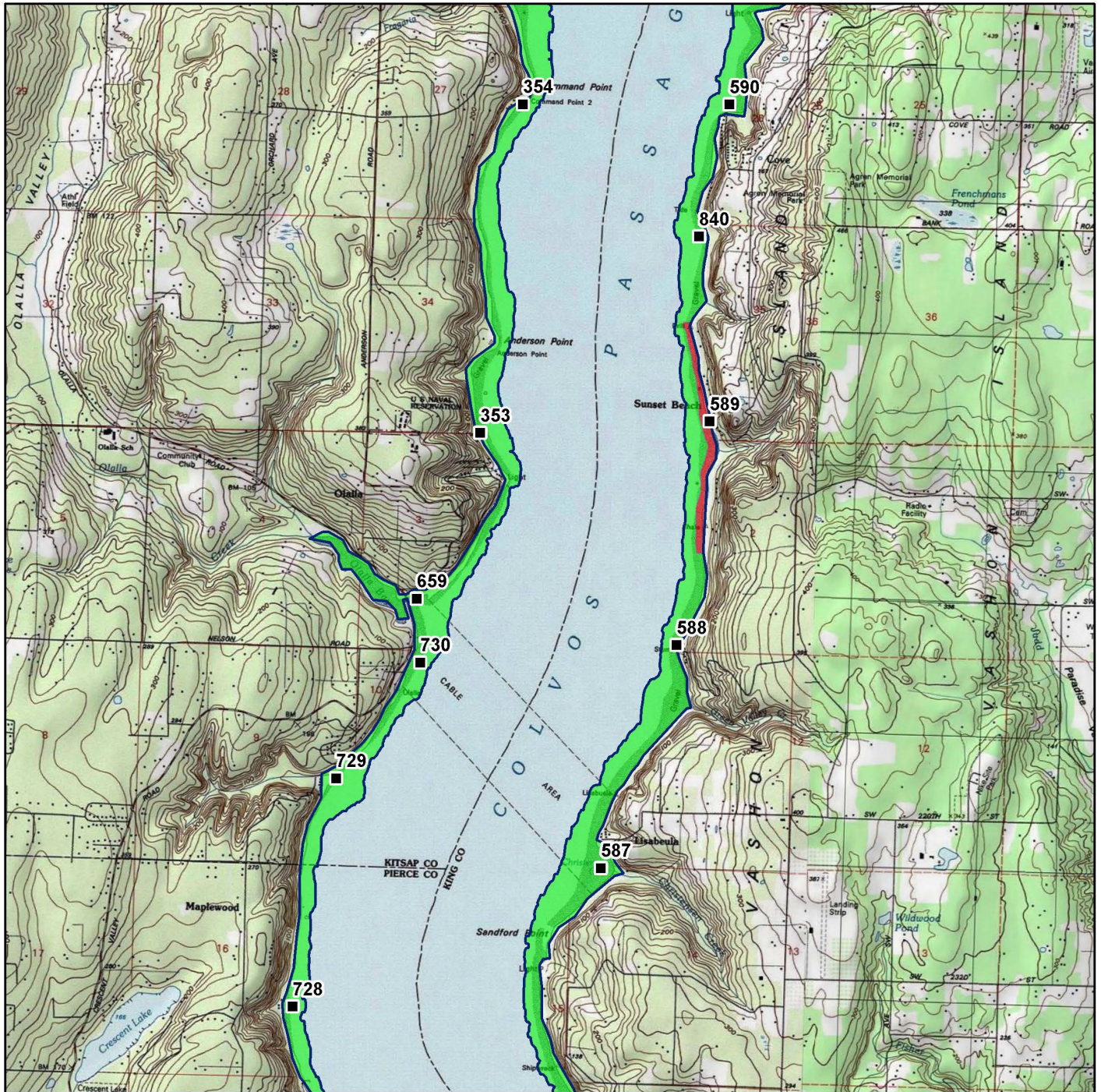
0 1 2 Miles



Classification	Sampling Stations
■ Approved	■
■ Conditional	
■ Prohibited	
■ Restricted	
■ Unclassified	



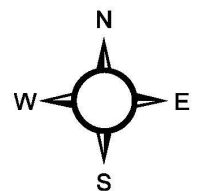
* Some sampling stations are highlighted with grey box for ease of reading.



Classification

- Approved
- Conditional
- Prohibited
- Restricted
- Unclassified

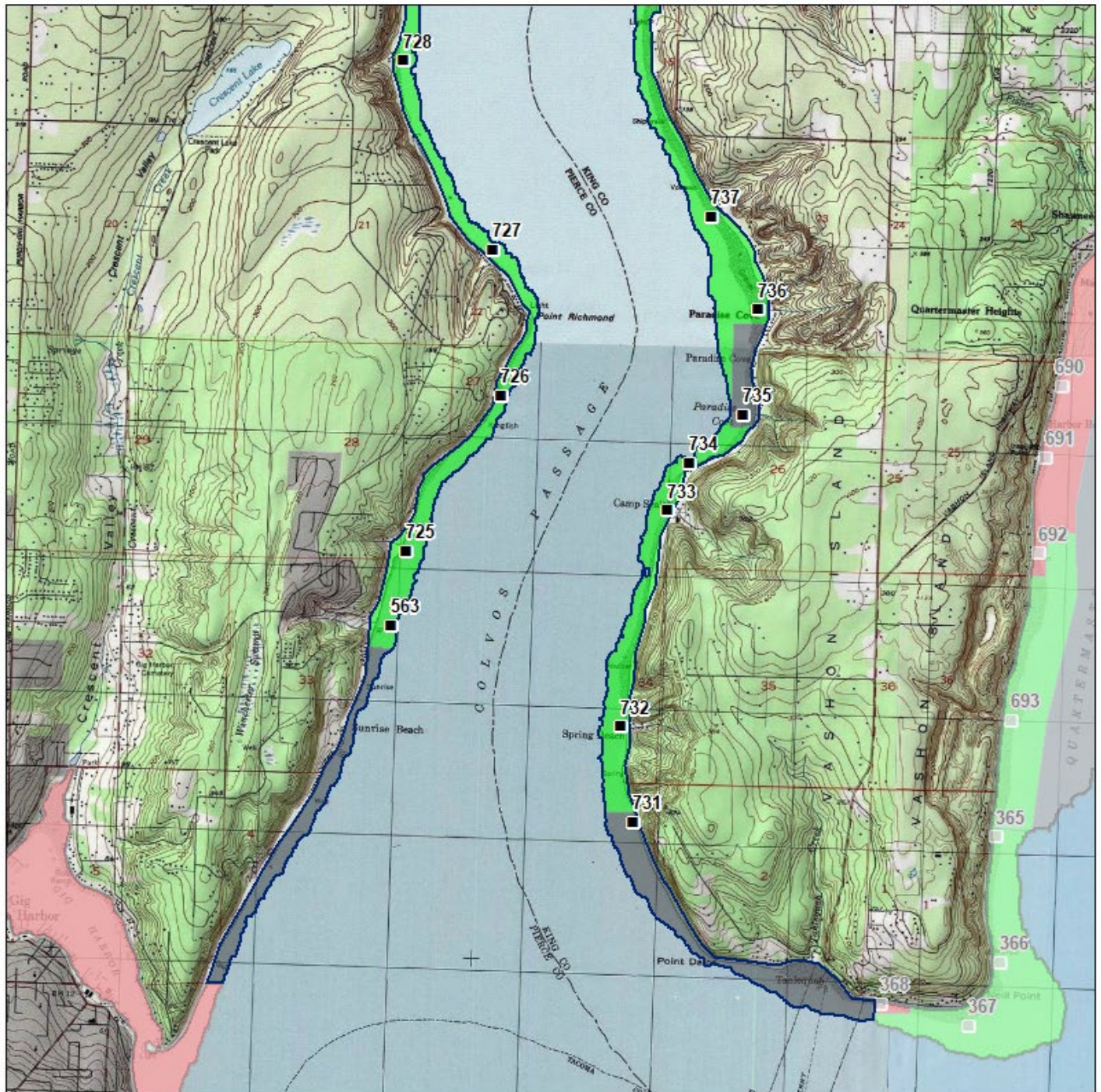
Sampling Stations



* Some sampling stations are highlighted with grey box for ease of reading.

Colvos Passage (3 of 3)

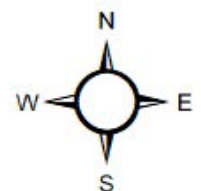
0 1 2 Miles



Classification

- Approved
- Conditional
- Prohibited
- Restricted
- Unclassified

Sampling Stations



* Some sampling stations are highlighted with grey box for ease of reading.