

Hood Canal 4

Annual Shellfish Growing Area Review



Prepared By: Casey Deligeannis

Area: Hood Canal 4

Year Ending: December 31, 2023

Classification: Approved

Activities in the Growing Area in 2023

The growing area was sampled six times in accordance with the National Shellfish Sanitation Program (NSSP) Systematic Random Sampling (SRS) criteria. A routine three-year shoreline evaluation was completed, and six on-site sewage systems, wildlife and boating activities, and 80 drainages were evaluated. Six drainages were considered sites of concern due to periodic elevated bacteria levels, but no new pollution sources were identified that impact the growing area.

Kitsap Public Health District received grant funding from the National Estuary Program to provide O&M rebates and conduct Hood Canal Regional pollution and identification projects within the growing area.

Analytical Results of Water Samples

Table 1 summarizes the results of the last 30 samples collected from the area. This summary shows that all stations pass the NSSP water quality standard.

Change in Actual Pollution Sources that Impact the Growing Area

We currently have no information indicating that the area has new sources of pollution.

Classification Status

- Well within the classification standards
- Meets standards, but threatened with downgrade in classification
- Fails to meet current classification standards

Remarks and Recommendations

Table 1 shows that all stations meet the NSSP water quality standard for an Approved classification and the area is correctly classified.

TABLE 1. Summary of Marine Water Data (SRS) for the Hood Canal 4 Growing Area

Sampling Event Type: Regulatory

Maximum Number of Samples: 30

Tides Included: All

Station Number	Classification	Date Range	Range (FC/100mL)	Geomean (FC/100mL)	Est. 90 th Percentile (FC/100mL)	Meets Standard
144	Approved	1/31/2019 - 11/13/2023	1.7 - 4.5	1.8	2.3	Y
145	Approved	1/31/2019 - 11/13/2023	1.7 - 2.0	1.7	1.9	Y
146	Approved	1/31/2019 - 11/13/2023	1.7 - 17.0	2.3	5.0	Y
147	Approved	1/31/2019 - 11/13/2023	1.7 - 7.8	2.1	3.5	Y
148	Approved	1/31/2019 - 11/13/2023	1.7 - 4.5	1.9	2.8	Y
149	Approved	1/31/2019 - 11/13/2023	1.7 - 4.5	2.0	3.1	Y
150	Approved	1/31/2019 - 11/13/2023	1.7 - 4.5	1.9	2.6	Y
151	Approved	1/31/2019 - 11/13/2023	1.7 - 4.5	1.9	2.7	Y
152	Approved	1/31/2019 - 11/13/2023	1.7 - 4.0	1.8	2.2	Y
153	Approved	1/31/2019 - 11/13/2023	1.7 - 33.0	2.0	4.3	Y
154	Approved	1/31/2019 - 11/13/2023	1.7 - 2.0	1.7	1.9	Y
155	Approved	1/31/2019 - 11/13/2023	1.7 - 7.8	2.0	3.2	Y
156	Approved	1/31/2019 - 11/13/2023	1.7 - 4.5	1.9	2.8	Y
157	Approved	1/31/2019 - 11/13/2023	1.7 - 79.0	2.0	4.9	Y
158	Approved	1/31/2019 - 11/13/2023	1.7 - 9.2	2.2	4.2	Y
159	Approved	1/31/2019 - 11/13/2023	1.7 - 13.0	2.1	4.0	Y
160	Approved	1/31/2019 - 11/13/2023	1.7 - 280.0	2.4	8.5	Y
161	Approved	1/31/2019 - 11/13/2023	1.7 - 7.8	1.8	2.6	Y
162	Approved	1/31/2019 - 11/13/2023	1.7 - 17.0	1.9	3.2	Y
163	Approved	1/31/2019 - 11/13/2023	1.7 - 2.0	1.7	1.8	Y
164	Approved	1/31/2019 - 11/13/2023	1.7 - 2.0	1.8	1.9	Y
165	Approved	1/31/2019 - 11/13/2023	1.7 - 2.0	1.8	1.9	Y
166	Approved	1/31/2019 - 11/13/2023	1.7 - 2.0	1.7	1.9	Y
307	Unclassified	1/31/2019 - 11/13/2023	1.7 - 2.0	1.7	1.8	Y

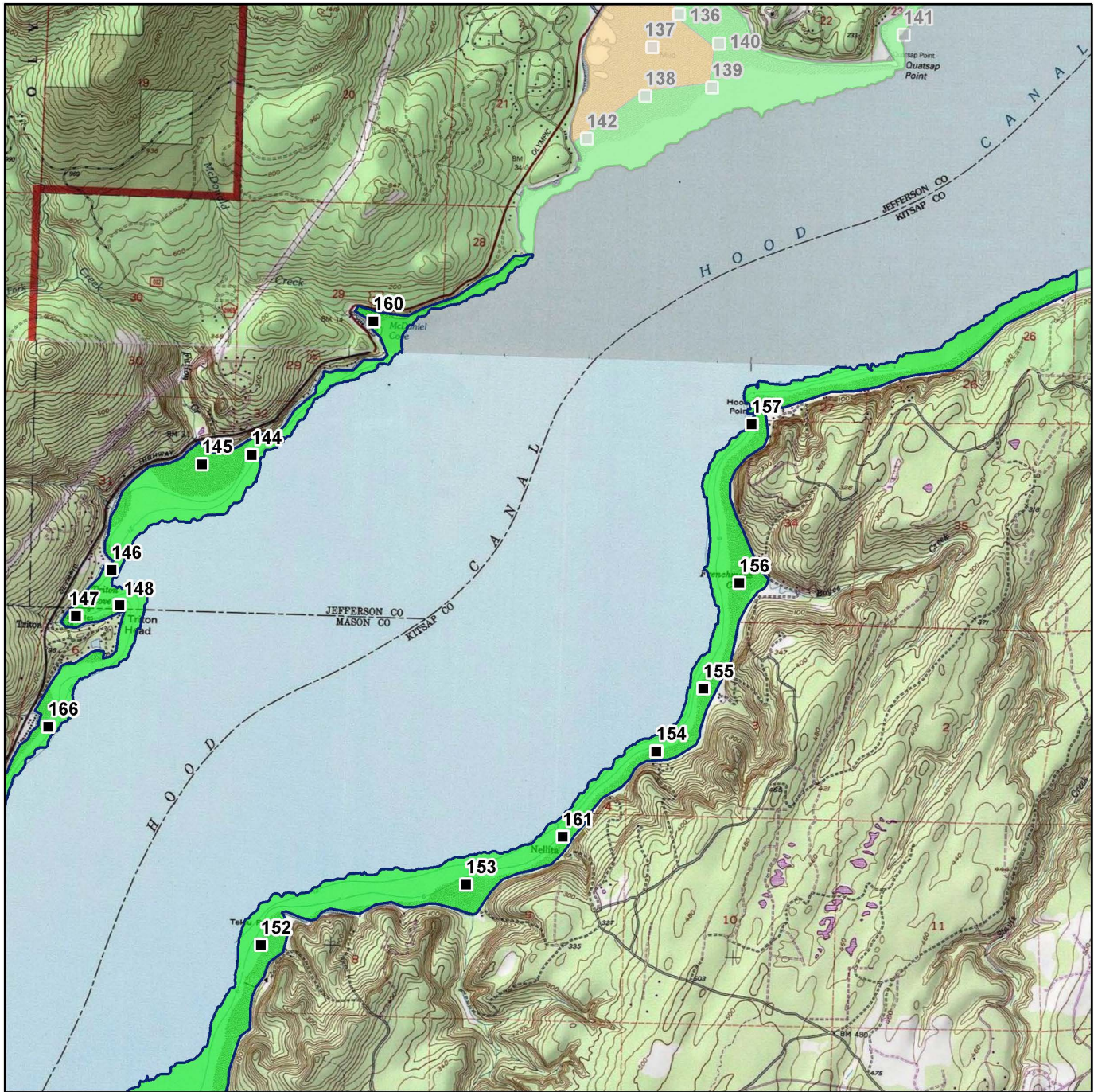
The standard for approved shellfish growing waters is fecal coliform geometric mean not greater than 14 organisms/ 100 mL with an estimated 90th percentile not greater than 43 organisms/ 100 mL. The above table shows bacteriological results in relation to program standards.

MAP 1. Hood Canal 4 Growing Area (1 of 2)

Hood Canal #4 (1 of 2)



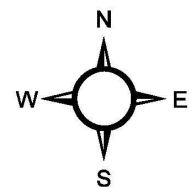
Date Updated: 7/11/2018



Classification

- Approved
- Conditional
- Prohibited
- Restricted
- Unclassified

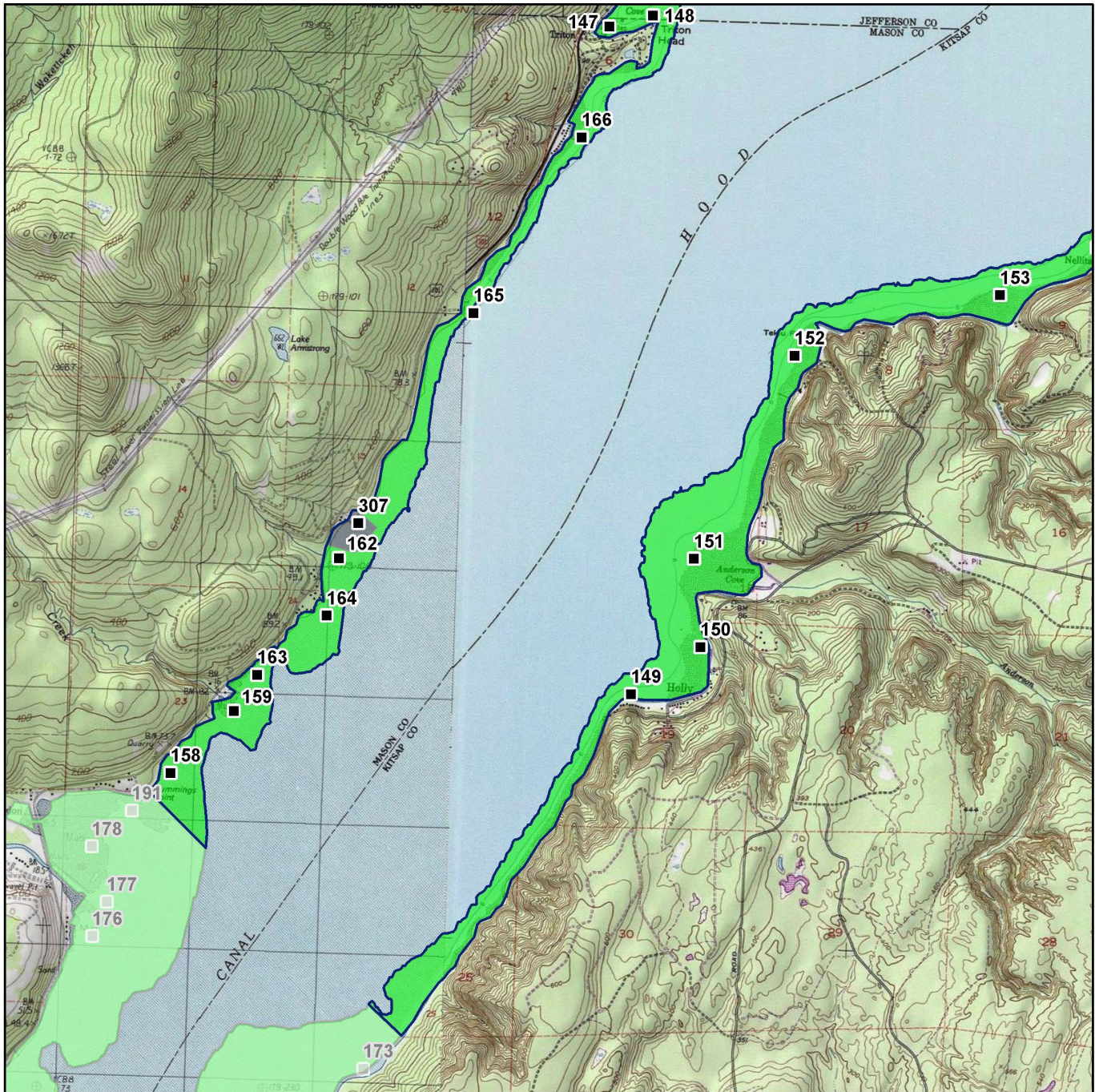
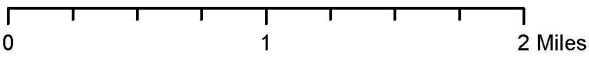
Sampling Stations



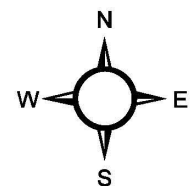
* Some sampling stations are highlighted with grey box for ease of reading.

MAP 2. Hood Canal 4 Growing Area (2 of 2)

 Hood Canal #4 (2 of 2)



Classification		Sampling Stations
	Approved	
	Conditional	
	Prohibited	
	Restricted	
	Unclassified	



* Some sampling stations are highlighted with grey box for ease of reading.