

Ketron Island

Annual Shellfish Growing Area Review



Prepared By: Mark Toy

Area: Ketron Island

Year Ending: December 31, 2021

Classification: Approved, Prohibited

Activities in the Growing Area in 2021

The growing area was sampled six times in accordance with National Shellfish Sanitation Program (NSSP) Systematic Random Sampling criteria. Marine Station 882 was added in the Approved area between Stations 826 and 827. Station 826 location on the growing area map was moved closer to the sanitary line to align with the actual sampling location.

Analytical Results of Water Samples

Table 1 summarizes the results of the most recent 30 water samples collected from the area. This summary shows that all stations meet the NSSP water quality standard.

Change in Actual Pollution Sources that Impact the Growing Area

We currently have no information indicating that the area has new sources of pollution.

Classification Status

- Well within the classification standards
- Meets standards, but some concerns
- Meets standards, but threatened with downgrade in classification
- Fails to meet current classification standards

Remarks and Recommendations

Table 1 shows that all stations meet the NSSP water quality standard for an Approved classification and the area is correctly classified.

TABLE 1. Summary of Marine Water Data (SRS) for the Ketron Island Growing Area

Sampling Event Type: Regulatory

Maximum Number of Samples: 30

Tides Included: All

Station Number	Classification	Date Range	Range (FC/100 mL)	GeoMean (FC/100 mL)	Est. 90 th Percentile (FC/100 mL)	Meets Standard
801	Approved	5/17/2017 - 11/29/2021	1.7 - 4.0	1.9	2.5	Y
802	Approved	5/17/2017 - 11/29/2021	1.7 - 4.5	1.9	2.5	Y
803	Approved	5/17/2017 - 11/29/2021	1.7 - 7.8	2.0	3.2	Y
804	Approved	5/17/2017 - 11/29/2021	1.7 - 17.0	1.9	3.2	Y
826	Approved	5/17/2017 - 11/29/2021	1.7 - 7.8	2.0	2.9	Y
827	Approved	5/17/2017 - 11/29/2021	1.7 - 17.0	2.0	3.7	Y
882	Approved	11/29/2021 - 11/29/2021	4.5 - 4.5	4.5	4.5	*N/A

The standard for approved shellfish growing waters is fecal coliform geometric mean not greater than 14 organisms/ 100 mL with an estimated 90th percentile not greater than 43 organisms/ 100 mL. The above table shows bacteriological results in relation to program standards.

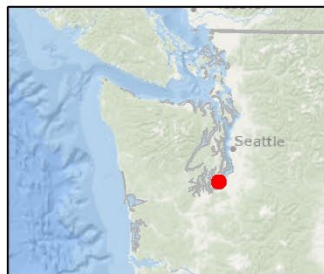
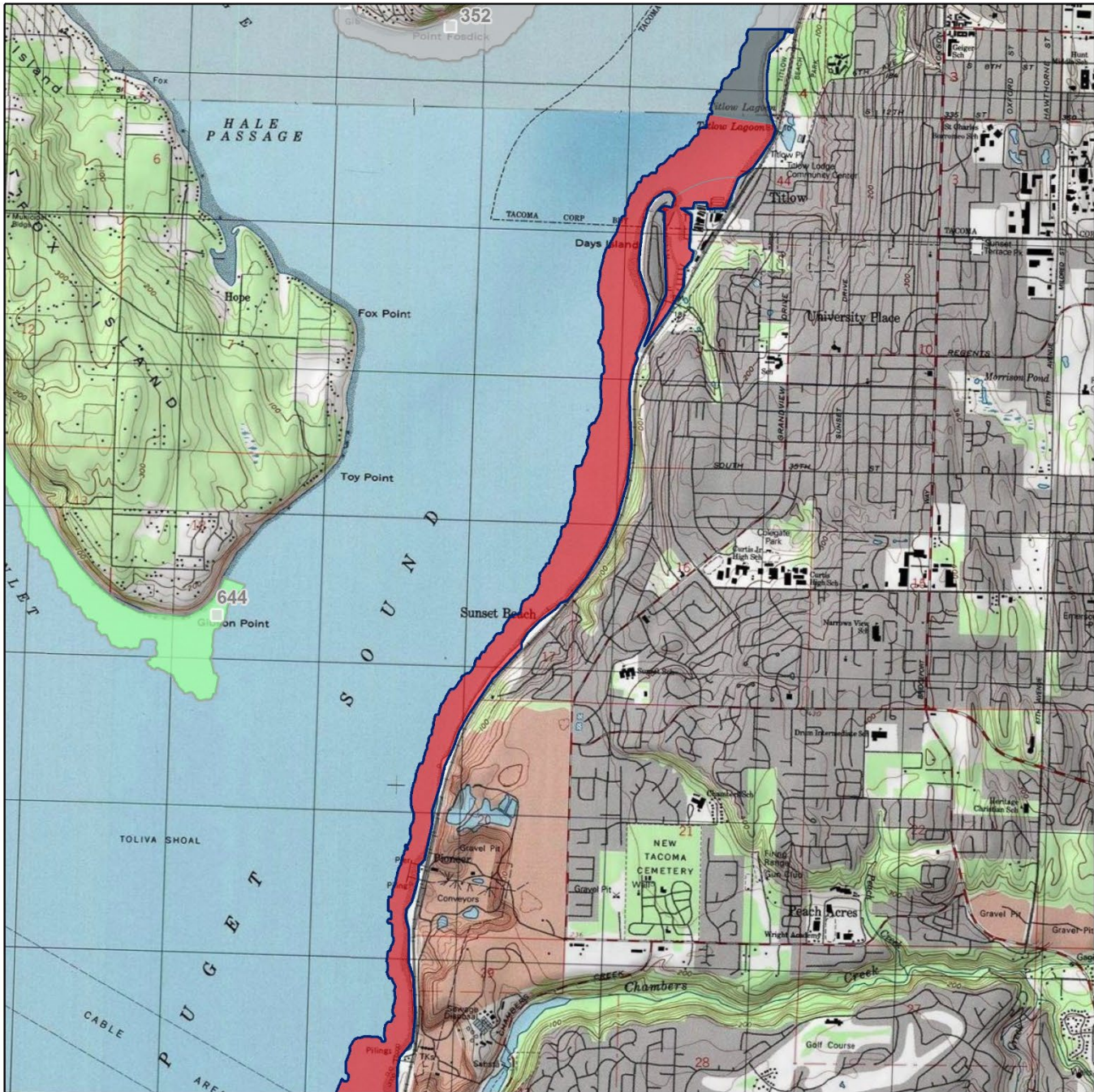
MAP 1. Ketron Island Growing Area 1 of 2

Ketron Island (1 of 2)



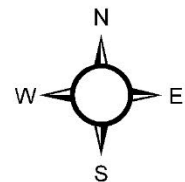
Date Updated: 8/27/2018

0 1 2 Miles



Classification **Sampling Stations**

- Approved
- Conditional
- Prohibited
- Restricted
- Unclassified



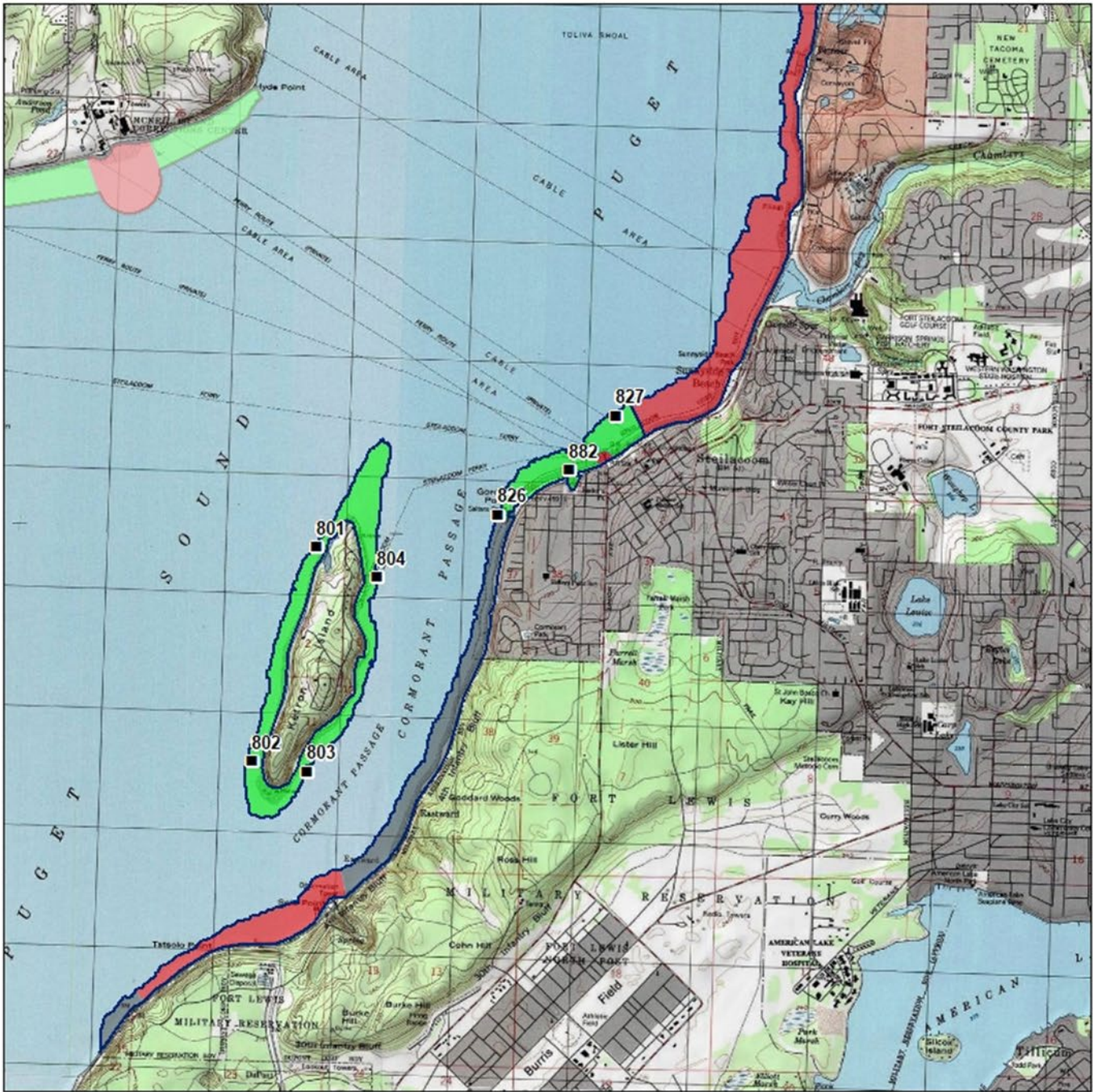
* Some sampling stations are highlighted with grey box for ease of reading.

MAP 2. Ketron Island Growing Area 2 of 2

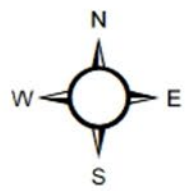
Ketron Island (2 of 2)



Date Updated: 10/20/2021



Classification	Sampling Stations
 Approved	
 Conditional	
 Prohibited	
 Restricted	
 Unclassified	



* Some sampling stations are highlighted with grey box for ease of reading.