

# Lopez Island Southeast

## Annual Shellfish Growing Area Review



Prepared By: Fiona Dahl

Area: Lopez Island Southeast

Year Ending: December 31, 2024

Classification: Restricted

### Activities in the Growing Area in 2024

The growing area is classified for subtidal scallop harvest only. There are currently no relay activities approved in this area.

### Analytical Results of Water Samples

Two marine water stations (103 and 104) are in the growing area for the purpose of approving relay harvest activities. The stations are not shown on the growing area map. No bacterial samples are required from these stations.

### Change in Actual Pollution Sources that Impact the Growing Area

We currently have no information indicating that the area has new sources of pollution.

### Classification Status

- ☒ Well within the classification standards
- ☐ Meets standards, but threatened with downgrade in classification
- ☐ Fails to meet current classification standards

### Remarks and Recommendations

The area meets the appropriate standards to be classified as Restricted.

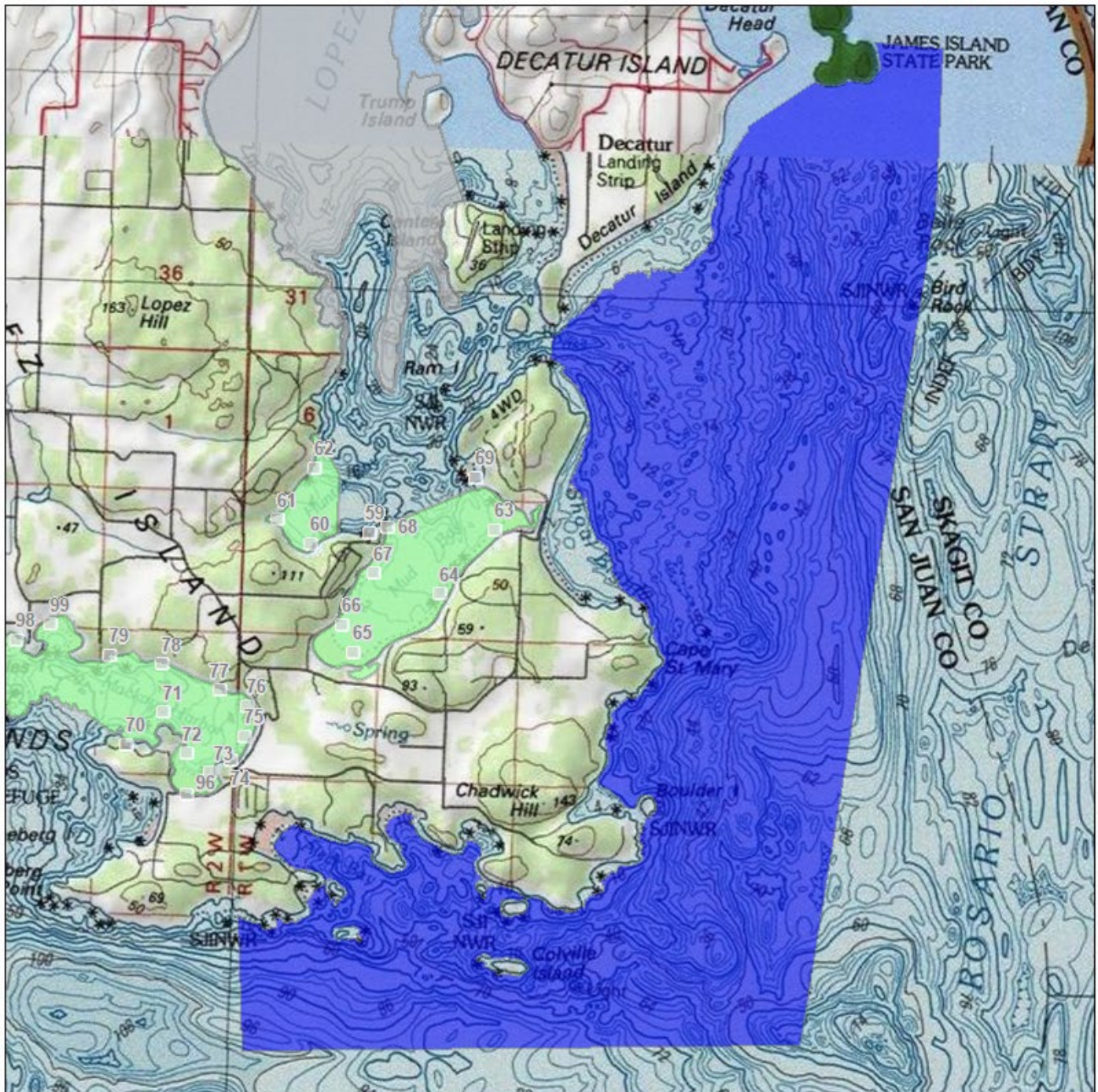
MAP 1. Lopez Island Southeast Growing Area

# Lopez Island Southeast



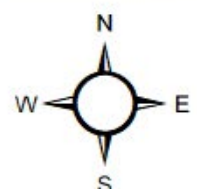
Date Updated: 8/14/2019

0 1.5 3 Miles



Classification	
<span style="color: green;">■</span>	Approved
<span style="color: orange;">■</span>	Conditional
<span style="color: red;">■</span>	Prohibited
<span style="color: blue;">■</span>	Restricted
<span style="color: grey;">■</span>	Unclassified

## Sampling Stations



\* Some sampling stations are highlighted with grey box for ease of reading.