

Nahcotta

Annual Shellfish Growing Area Review



Prepared By: Patrick Biondo

Area: Nahcotta

Year Ending: December 31, 2022

Classification: Approved, Prohibited

Activities in the Growing Area in 2022

The growing area was sampled six times in accordance with National Shellfish Sanitation Program (NSSP) Systematic Random Sampling criteria. Follow up shoreline sampling at 17 drainages during dry weather season was completed and bacteria levels were low. No additional activities have been documented in the growing area.

Analytical Results of Water Samples

Table 1 summarizes the results of the last 30 samples collected from the area. This summary shows that all stations pass the NSSP water quality standard. Station 228 only has 23 samples.

Change in Actual Pollution Sources that Impact the Growing Area

We currently have no information indicating that the area has new sources of pollution.

Classification Status

- Well within the classification standards
- Meets standards, but some concerns
- Meets standards, but threatened with downgrade in classification
- Fails to meet current classification standards

Remarks and Recommendations

Table 1 shows that all stations meet the NSSP water quality standard for an Approved classification and the area is correctly classified.

TABLE 1. Summary of Marine Water Data (SRS) for the Nahcotta Growing Area

Sampling Event Type: Regulatory

Maximum Number of Samples: 30

Tides Included: All

Station Number	Classification	Date Range	Range (FC/100mL)	Geomean (FC/100mL)	Est. 90 th Percentile (FC/100mL)	Meets Standard
163	Approved	2/13/2018 - 12/6/2022	1.7 - 13.0	1.9	3.0	Y
165	Approved	2/13/2018 - 12/6/2022	1.7 - 7.8	1.9	2.9	Y
166	Approved	2/13/2018 - 12/6/2022	1.7 - 13.0	1.9	3.2	Y
167	Approved	2/13/2018 - 12/6/2022	1.7 - 4.5	1.8	2.3	Y
169	Approved	2/13/2018 - 12/6/2022	1.7 - 17.0	2.1	4.2	Y
171	Approved	2/13/2018 - 12/6/2022	1.7 - 4.5	1.9	2.7	Y
172	Approved	2/13/2018 - 12/6/2022	1.7 - 4.5	1.9	2.8	Y
173	Approved	2/13/2018 - 12/6/2022	1.7 - 13.0	1.9	3.2	Y
175	Approved	2/13/2018 - 12/6/2022	1.7 - 49.0	1.9	4.2	Y
176	Approved	2/13/2018 - 12/6/2022	1.7 - 14.0	1.9	3.1	Y
179	Approved	2/13/2018 - 12/6/2022	1.7 - 4.5	1.9	2.8	Y
180	Approved	2/13/2018 - 12/6/2022	1.7 - 14.0	1.9	3.4	Y
182	Approved	2/13/2018 - 12/6/2022	1.7 - 11.0	2.1	3.6	Y
186	Approved	2/13/2018 - 12/6/2022	1.7 - 4.5	1.8	2.5	Y
200	Approved	2/13/2018 - 12/6/2022	1.7 - 33.0	2.7	8.0	Y
201	Approved	2/13/2018 - 12/6/2022	1.7 - 49.0	2.4	6.4	Y
212	Approved	2/13/2018 - 12/6/2022	1.7 - 9.3	2.3	4.7	Y
213	Approved	2/13/2018 - 12/6/2022	1.7 - 46.0	2.2	5.2	Y
217	Approved	2/13/2018 - 12/6/2022	1.7 - 4.5	1.9	2.7	Y
228	Approved	3/5/2019 - 12/6/2022	1.7 - 4.5	1.8	2.4	*N/A

The standard for approved shellfish growing waters is fecal coliform geometric mean not greater than 14 organisms/ 100 mL with an estimated 90th percentile not greater than 43 organisms/ 100 mL. The above table shows bacteriological results in relation to program standards.

* N/A – SRS criteria require a minimum of 30 samples from each station

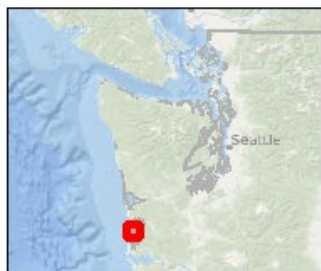
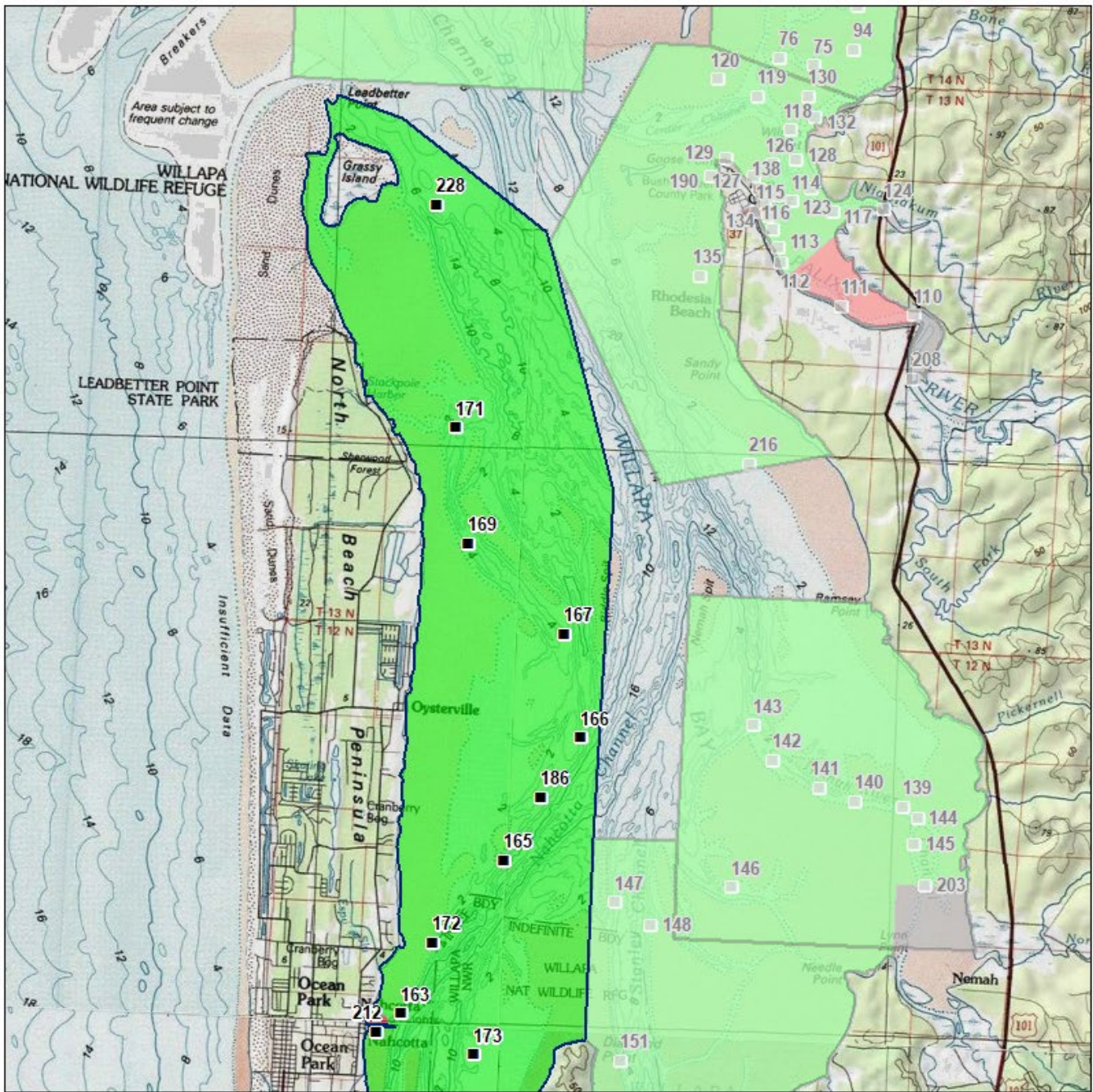
MAP 1. Nahcotta Growing Area 1 of 2

Nahcotta (1 of 2)

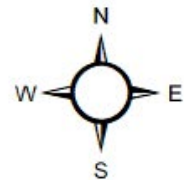


Date Updated: 12/22/2020

0 2.5 5 Miles



Classification	Sampling Stations
 Approved	
 Conditional	
 Prohibited	
 Restricted	
 Unclassified	



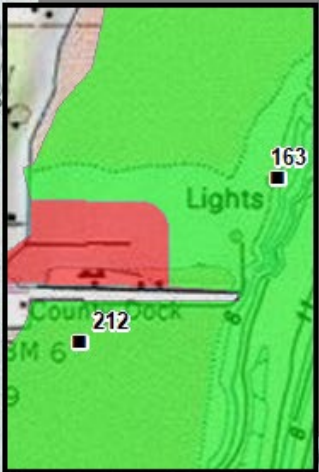
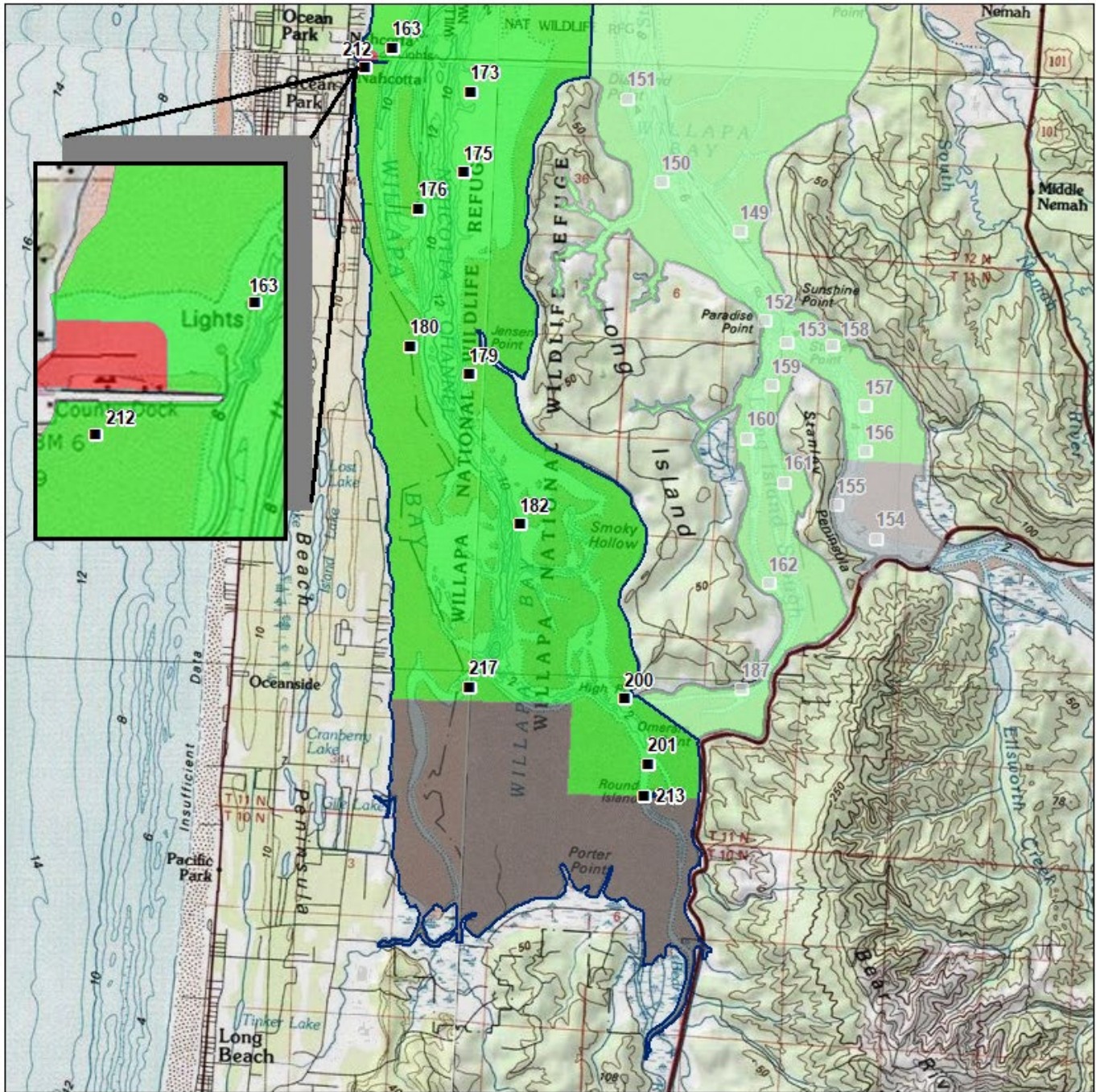
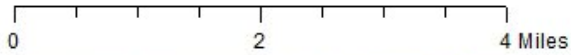
* Some sampling stations are highlighted with grey box for ease of reading.

MAP 2. Nahcotta Growing Area 2 of 2

Nahcotta (2 of 2)

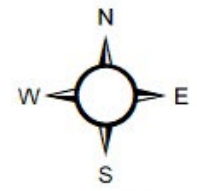


Date Updated: 2/14/2019



- Classification**
- Approved
 - Conditional
 - Prohibited
 - Restricted
 - Unclassified

- Sampling Stations**
-



* Some sampling stations are highlighted with grey box for ease of reading.