

# Naselle River

## Annual Shellfish Growing Area Review

---



Prepared By: Michael Frieese

Area: Naselle River

Year Ending: December 31, 2024

Classification: Approved

### Activities in the Growing Area in 2024

The growing area was sampled five times in accordance with the National Shellfish Sanitation Program (NSSP) Systematic Random Sampling criteria. Due to gale force winds on 12/17/2024, the sampling event was cancelled. This sampling event will be made up in 2025. No additional activities have been documented in the growing area.

### Analytical Results of Water Samples

Table 1 summarizes the results of the last 30 samples collected from the area. This summary shows that all stations pass the NSSP water quality standard. Station 229, in an unclassified portion of the growing area, has 26 samples.

### Change in Actual Pollution Sources that Impact the Growing Area

We currently have no information indicating that the area has new sources of pollution.

### Classification Status

- ☒ Well within the classification standards
- ☐ Meets standards, but threatened with downgrade in classification
- ☐ Fails to meet current classification standards

### Remarks and Recommendations

Table 1 shows that all stations meet the NSSP water quality standard for an Approved classification and the area is correctly classified.

**TABLE 1. Summary of Marine Water Data (SRS) for the Naselle River Growing Area**

Sampling Event Type: Regulatory

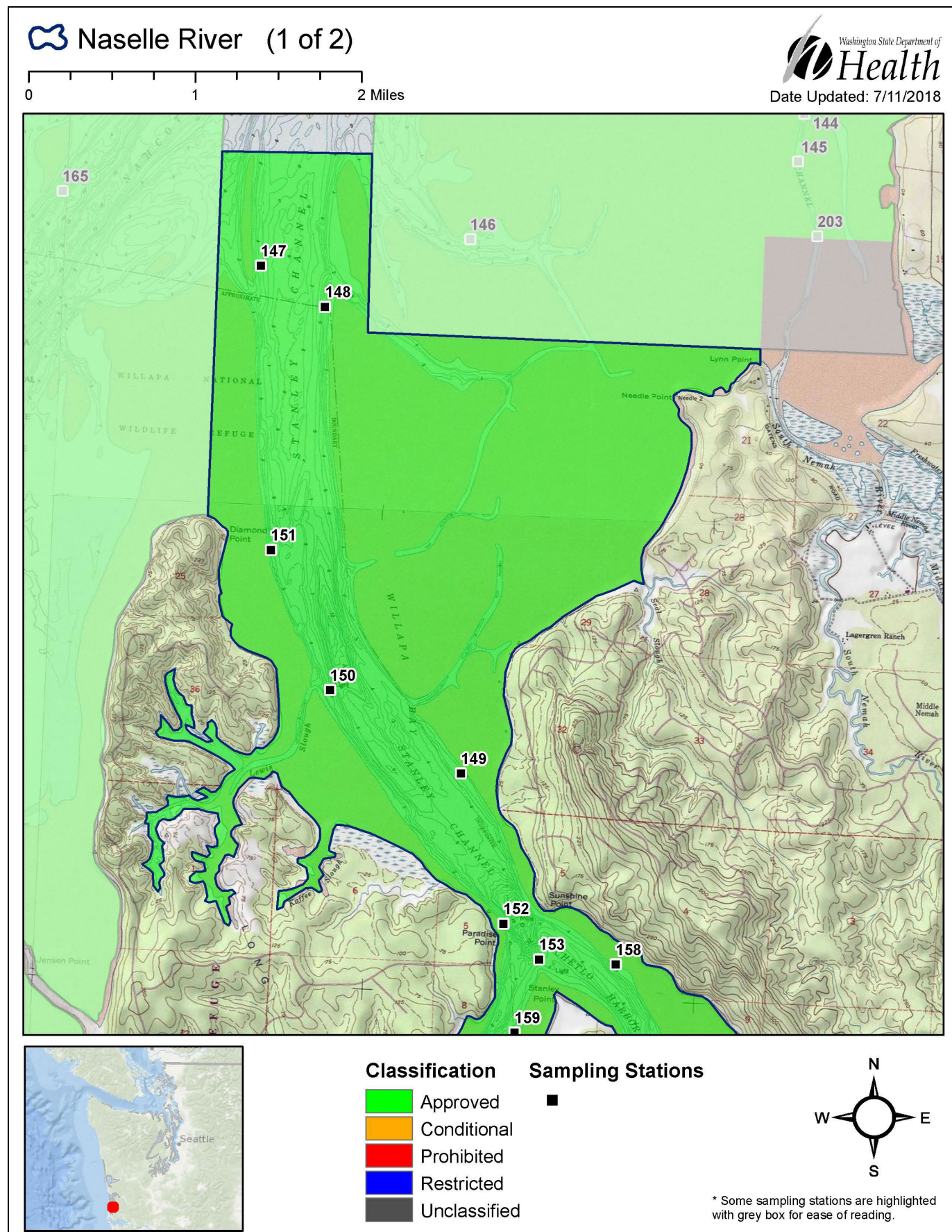
Maximum Number of Samples: 30

Tides Included: All

Station Number	Classification	Date Range	Range (FC/100mL)	Geomean (FC/100mL)	Est. 90 <sup>th</sup> Percentile (FC/100mL)	Meets Standard
147	Approved	11/13/2019 - 10/2/2024	1.7 - 7.8	1.9	2.8	Y
148	Approved	11/13/2019 - 10/2/2024	1.7 - 23.0	2.0	3.9	Y
149	Approved	11/13/2019 - 10/2/2024	1.7 - 70.0	2.5	6.9	Y
150	Approved	11/13/2019 - 10/2/2024	1.7 - 13.0	2.1	4.0	Y
151	Approved	11/13/2019 - 10/2/2024	1.7 - 13.0	1.9	3.0	Y
152	Approved	11/13/2019 - 10/2/2024	1.7 - 130.0	3.7	18.3	Y
153	Approved	11/13/2019 - 10/2/2024	1.7 - 64.0	3.0	8.8	Y
154	Approved	11/13/2019 - 10/2/2024	1.7 - 94.0	5.3	23.3	Y
155	Approved	11/13/2019 - 10/2/2024	1.7 - 79.0	4.4	19.9	Y
156	Approved	11/13/2019 - 10/2/2024	1.7 - 46.0	3.7	13.5	Y
157	Approved	11/13/2019 - 10/2/2024	1.7 - 46.0	3.3	9.1	Y
158	Approved	11/13/2019 - 10/2/2024	1.7 - 70.0	3.1	11.6	Y
159	Approved	11/13/2019 - 10/2/2024	1.7 - 70.0	3.3	12.0	Y
160	Approved	11/13/2019 - 10/2/2024	1.7 - 70.0	3.8	14.3	Y
161	Approved	11/13/2019 - 10/2/2024	1.7 - 33.0	4.8	18.3	Y
162	Approved	11/13/2019 - 10/2/2024	1.7 - 79.0	4.5	19.3	Y
187	Approved	11/13/2019 - 10/2/2024	1.7 - 79.0	5.0	24.3	Y
229	Unclassified	10/27/2020 - 10/2/2024	1.7 - 130.0	5.0	25.1	*N/A

The standard for approved shellfish growing waters is fecal coliform geometric mean not greater than 14 organisms/ 100 mL with an estimated 90th percentile not greater than 43 organisms/ 100 mL. The above table shows bacteriological results in relation to program standards

# MAP 1. Naselle Growing Area (1 of 2)





**Naselle River (2 of 2)**

Washington State Department of **Health**

Date Updated: 1/11/2021

0 1 2 Miles

**Classification**

- Approved
- Conditional
- Prohibited
- Restricted
- Unclassified

**Sampling Stations**

149, 152, 153, 158, 159, 160, 161, 162, 157, 156, 155, 154, 229, 187, 200, 182, 201

Some sampling stations are highlighted with grey box for ease of reading.