

Nisqually Reach

Annual Shellfish Growing Area Review



Prepared By: Michael Ulrich

Area: Nisqually Reach

Year Ending: December 31, 2024

Classification: Approved, Prohibited

Activities in the Growing Area in 2024

The growing area was sampled six times in accordance with the National Shellfish Sanitation Program (NSSP) Systematic Random Sampling criteria. A routine three-year shoreline evaluation was completed and follow-up sampling will continue in 2025. No new or changes in pollution sources were identified from the completed shoreline evaluation that impact the growing area.

The Thurston County local health jurisdiction and Conservation District have continued Pollution Identification and Correction (PIC) and Enhanced OSS Operations & Maintenance (O&M) activities in the growing area.

An administrative change to the Prohibited area associated with the Beachcrest Marina was made to accurately reflect on the classification map.

Analytical Results of Water Samples

Table 1 summarizes the results of the last 30 samples collected from the area. This summary shows that all stations pass the NSSP water quality standard.

Change in Actual Pollution Sources that Impact the Growing Area

We currently have no information indicating that the area has new sources of pollution.

Classification Status

- Well within the classification standards
- Meets standards, but threatened with downgrade in classification
- Fails to meet current classification standards

Remarks and Recommendations

Table 1 shows that all stations meet the NSSP water quality standard for an Approved classification and the area is correctly classified.

TABLE 1. Summary of Marine Water Data (SRS) for the Nisqually Reach Growing Area

Sampling Event Type: Regulatory

Maximum Number of Samples: 30

Tides Included: All

Station Number	Classification	Date Range	Range (FC/100mL)	Geomean (FC/100mL)	Est. 90 th Percentile (FC/100mL)	Meets Standard
222	Approved	2/3/2020 - 12/10/2024	1.7 - 13.0	2.1	4.0	Y
223	Approved	2/3/2020 - 12/10/2024	1.7 - 13.0	2.0	3.3	Y
225	Approved	2/3/2020 - 12/10/2024	1.7 - 13.0	2.3	4.6	Y
227	Approved	2/3/2020 - 12/10/2024	1.7 - 4.5	1.9	2.7	Y
231	Approved	2/3/2020 - 12/10/2024	1.7 - 11.0	2.3	4.7	Y
233	Approved	2/3/2020 - 12/10/2024	1.7 - 4.5	1.8	2.3	Y
237	Approved	2/3/2020 - 12/10/2024	1.7 - 7.8	1.9	2.9	Y
240	Approved	2/3/2020 - 12/10/2024	1.7 - 2.0	1.7	1.8	Y
242	Approved	2/3/2020 - 12/10/2024	1.7 - 8.3	1.9	2.9	Y
243	Approved	2/3/2020 - 12/10/2024	1.7 - 4.0	1.8	2.2	Y
245	Approved	2/3/2020 - 12/10/2024	1.7 - 13.0	2.0	3.5	Y
246	Approved	2/3/2020 - 12/10/2024	1.7 - 33.0	2.4	5.4	Y
247	Approved	2/3/2020 - 12/10/2024	1.7 - 13.0	2.2	4.4	Y
248	Approved	2/3/2020 - 12/10/2024	1.7 - 14.0	2.1	4.5	Y
250	Approved	2/3/2020 - 12/10/2024	1.7 - 2.0	1.7	1.9	Y
251	Approved	2/3/2020 - 12/10/2024	1.7 - 4.5	1.8	2.3	Y
252	Approved	2/3/2020 - 12/10/2024	1.7 - 6.1	1.8	2.7	Y
253	Approved	2/3/2020 - 12/10/2024	1.7 - 13.0	2.2	4.8	Y
709	Approved	2/3/2020 - 12/10/2024	1.7 - 22.0	2.8	6.8	Y
759	Approved	11/7/2019 - 12/10/2024	1.7 - 7.8	2.0	3.2	Y
876	Approved	2/3/2020 - 12/10/2024	1.7 - 2.0	1.7	1.8	Y
224	Prohibited	11/7/2019 - 12/10/2024	1.7 - 13.0	2.7	6.1	Y
234	Prohibited	2/3/2020 - 12/10/2024	1.7 - 33.0	3.4	9.6	Y
235	Prohibited	2/3/2020 - 12/10/2024	1.7 - 110.0	9.0	36.0	Y
249	Prohibited	2/3/2020 - 12/10/2024	1.7 - 6.8	1.9	3.0	Y

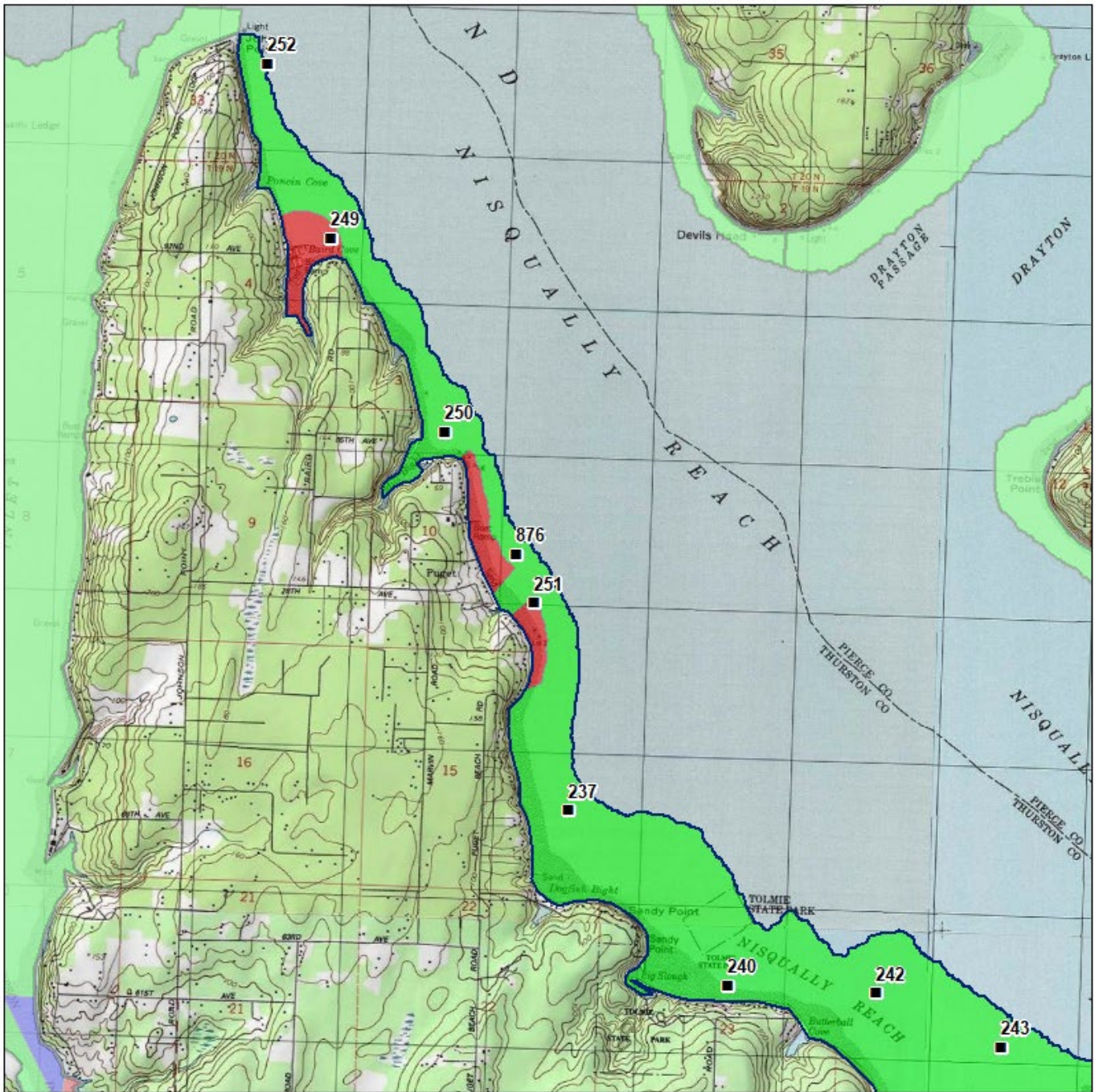
The standard for approved shellfish growing waters is fecal coliform geometric mean not greater than 14 organisms/ 100 mL with an estimated 90th percentile not greater than 43 organisms/ 100 mL. The above table shows bacteriological results in relation to program standards.

MAP 1. Nisqually Reach Growing Area

Nisqually Reach (1 of 2)

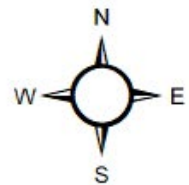


Date Updated: 1/13/2022



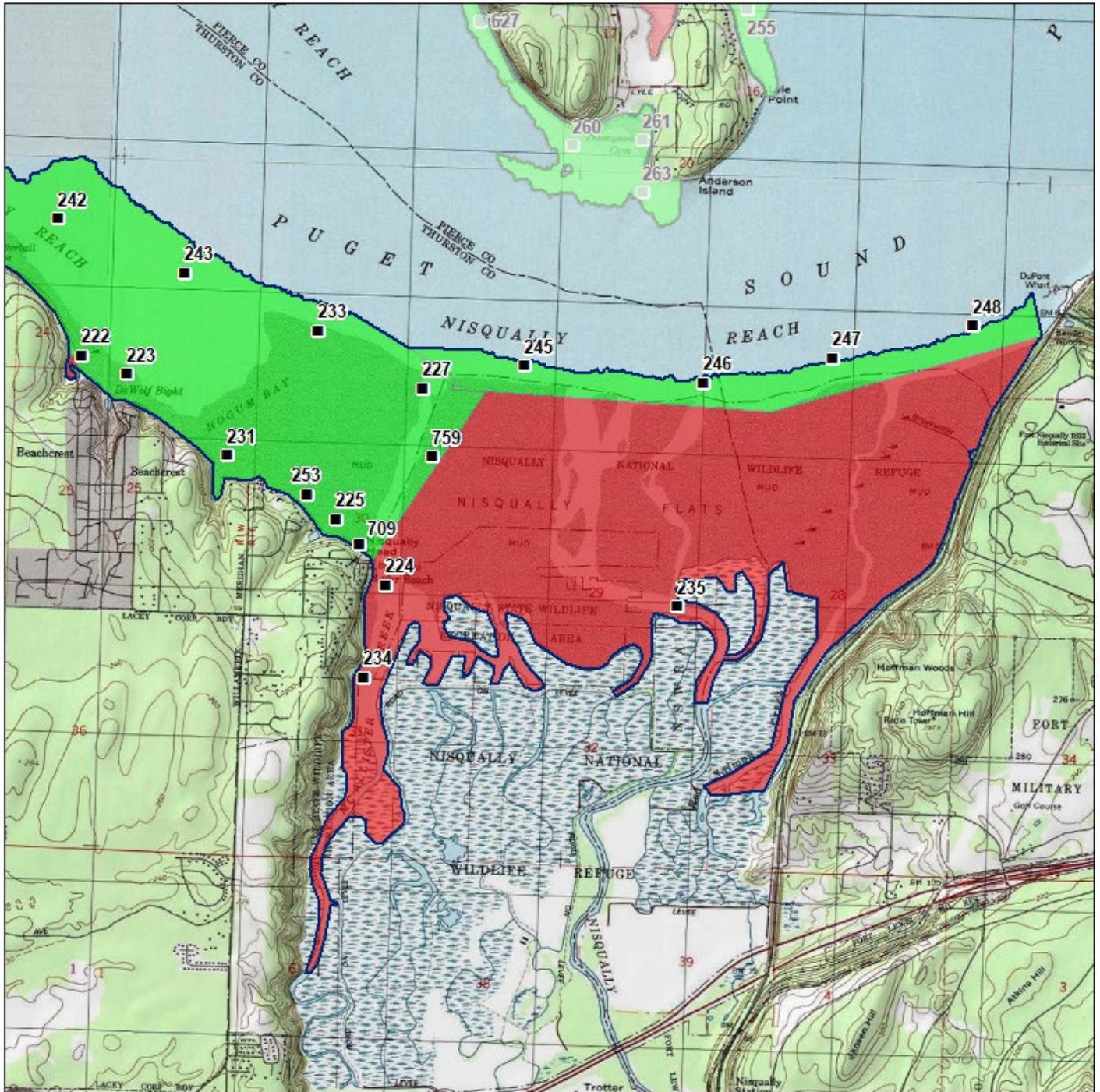
- Classification**
- Approved
 - Conditional
 - Prohibited
 - Restricted
 - Unclassified

- Sampling Stations**
-

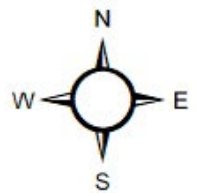


* Some sampling stations are highlighted with grey box for ease of reading.

Nisqually Reach (2 of 2)



Classification	Sampling Stations
 Approved	
 Conditional	
 Prohibited	
 Restricted	
 Unclassified	



* Some sampling stations are highlighted with grey box for ease of reading.