

North River

Annual Shellfish Growing Area Review



Prepared By: Casey Deligeannis

Area: North River

Year Ending: December 31, 2022

Classification: Approved

Activities in the Growing Area in 2022

The growing area was sampled six times in accordance with the National Shellfish Sanitation Program (NSSP) Systematic Random Sampling (SRS) criteria. The growing area was closed from January 6 – 14 due to flooding along the Willapa River.

Analytical Results of Water Samples

Table 1 summarizes results of the 30 most recent samples collected from the area. All stations in the Approved area meet NSSP water quality standard.

Change in Actual Pollution Sources that Impact the Growing Area

We currently have no information indicating that the area has new sources of pollution.

Classification Status

- Well within the classification standards
- Meets standards, but some concerns
- Meets standards, but threatened with downgrade in classification
- Fails to meet current classification standards

Remarks and Recommendations

Table 1 shows that all stations in the Approved area meet NSSP standard for an Approved classification and the area is correctly classified.

TABLE 1. Summary of Marine Water Data (SRS) for the North River Growing Area

Sampling Event Type: Regulatory

Maximum Number of Samples: 30

Tides Included: All

| Station Number | Classification | Date Range | Range (FC/100mL) | Geomean (FC/100mL) | Est. 90 th Percentile (FC/100mL) | Meets Standard |
|----------------|----------------|-----------------------|------------------|--------------------|---|----------------|
| 60 | Approved | 2/15/2018 - 12/7/2022 | 1.7 - 79.0 | 3.3 | 14.0 | Y |
| 65 | Approved | 2/15/2018 - 12/7/2022 | 1.7 - 33.0 | 2.7 | 8.5 | Y |
| 67 | Approved | 2/15/2018 - 12/7/2022 | 1.7 - 31.0 | 2.8 | 8.0 | Y |
| 68 | Approved | 2/15/2018 - 12/7/2022 | 1.7 - 33.0 | 2.9 | 9.1 | Y |
| 72 | Approved | 2/15/2018 - 12/7/2022 | 1.7 - 49.0 | 2.6 | 7.6 | Y |
| 73 | Approved | 2/15/2018 - 12/7/2022 | 1.7 - 79.0 | 2.4 | 8.1 | Y |
| 74 | Approved | 2/15/2018 - 12/7/2022 | 1.7 - 79.0 | 3.0 | 12.0 | Y |
| 61 | Unclassified | 2/15/2018 - 12/7/2022 | 1.7 - 49.0 | 4.3 | 17.4 | Y |
| 62 | Unclassified | 2/15/2018 - 12/7/2022 | 1.7 - 540.0 | 9.9 | 59.6 | N |
| 63 | Unclassified | 2/15/2018 - 12/7/2022 | 1.7 - 170.0 | 9.6 | 55.7 | N |

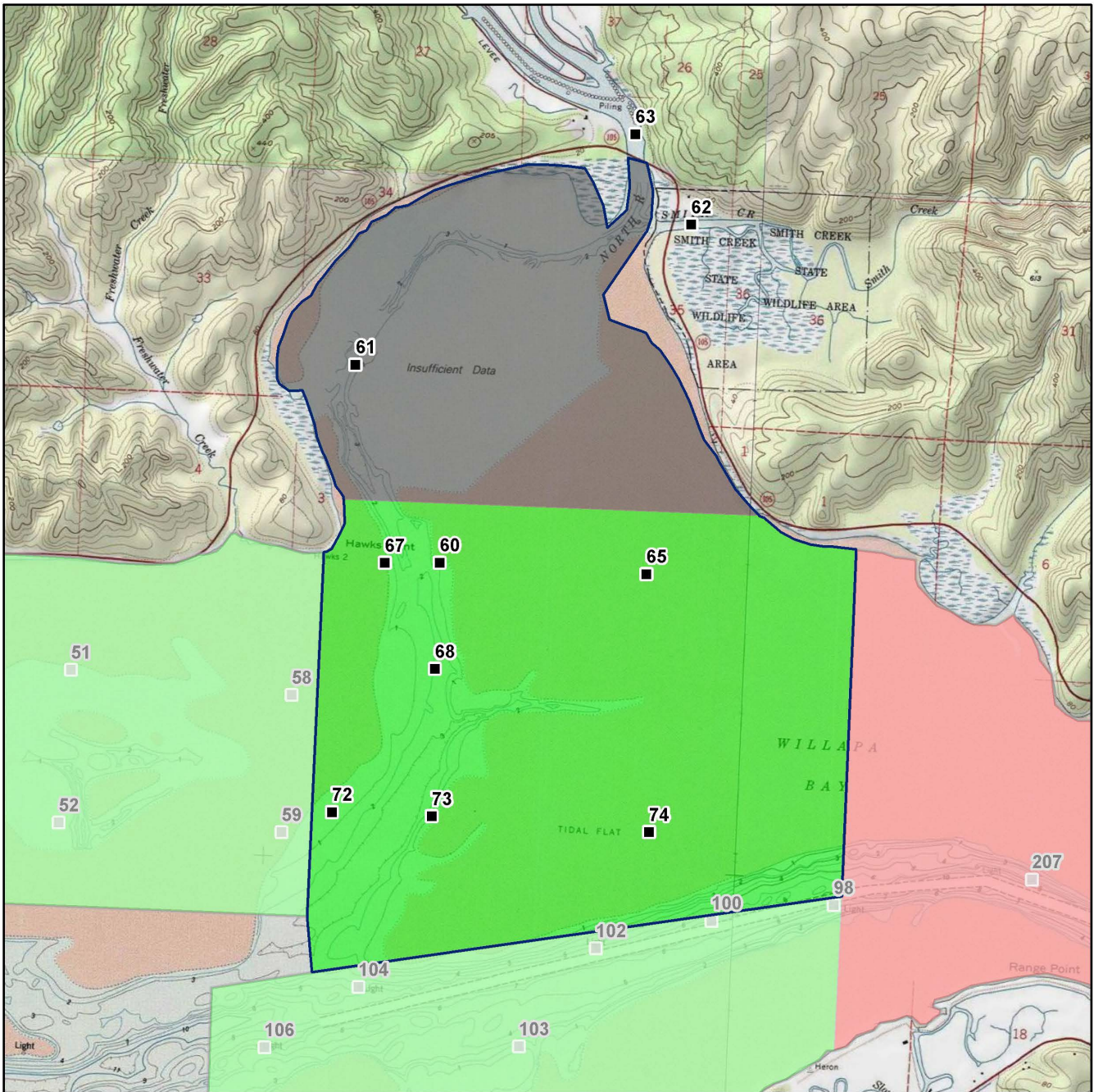
The standard for approved shellfish growing waters is fecal coliform geometric mean not greater than 14 organisms/ 100 mL with an estimated 90th percentile not greater than 43 organisms/ 100 mL. The above table shows bacteriological results in relation to program standards.

MAP 1. North River Growing Area

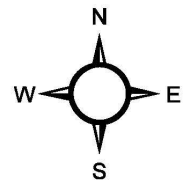
 North River



Date Updated: 7/11/2018



| Classification | Sampling Stations |
|--|---|
|  Approved |  |
|  Conditional | |
|  Prohibited | |
|  Restricted | |
|  Unclassified | |



* Some sampling stations are highlighted with grey box for ease of reading.