

Peale Passage

Annual Shellfish Growing Area Review



Prepared By: Dave Serdar

Area: Peale Passage

Year Ending: December 31, 2021

Classification: Approved

Activities in the Growing Area in 2021

The growing area was sampled a minimum of six times in accordance with National Shellfish Sanitation Program (NSSP) Systematic Random Sampling criteria. No additional activities have been documented in the growing area.

Analytical Results of Water Samples

Table 1 summarizes the results of the last 30 samples collected from the area. This summary shows that all stations pass the NSSP water quality standard.

Change in Actual Pollution Sources that Impact the Growing Area

We currently have no information indicating that the area has new sources of pollution.

Classification Status

- Well within the classification standards
- Meets standards, but some concerns
- Meets standards, but threatened with downgrade in classification
- Fails to meet current classification standards

Remarks and Recommendations

Table 1 shows that all stations meet the NSSP water quality standard for an Approved classification and the area is correctly classified.

TABLE 1. Summary of Marine Water Data (SRS) for the Peale Passage Growing Area

Sampling Event Type: Regulatory

Maximum Number of Samples: 30

Tides Included: All

| Station Number | Classification | Date Range | Range (FC/100mL) | Geomean (FC/100mL) | Est. 90 th Percentile (FC/100mL) | Meets Standard |
|----------------|----------------|----------------------|------------------|--------------------|---|----------------|
| 78 | Approved | 2/1/2017 - 12/9/2021 | 1.7 - 6.8 | 1.8 | 2.5 | Y |
| 79 | Approved | 2/1/2017 - 12/9/2021 | 1.7 - 2.0 | 1.7 | 1.8 | Y |
| 80 | Approved | 2/1/2017 - 12/9/2021 | 1.7 - 4.5 | 1.8 | 2.2 | Y |
| 81 | Approved | 2/1/2017 - 12/9/2021 | 1.7 - 2.0 | 1.8 | 1.9 | Y |
| 82 | Approved | 2/1/2017 - 12/9/2021 | 1.7 - 4.5 | 1.8 | 2.3 | Y |
| 83 | Approved | 2/1/2017 - 12/9/2021 | 1.7 - 4.5 | 1.9 | 2.5 | Y |
| 84 | Approved | 2/1/2017 - 12/9/2021 | 1.7 - 7.8 | 1.8 | 2.6 | Y |
| 85 | Approved | 2/1/2017 - 12/9/2021 | 1.7 - 13.0 | 1.8 | 3.0 | Y |
| 86 | Approved | 2/1/2017 - 12/9/2021 | 1.7 - 4.5 | 1.8 | 2.2 | Y |
| 87 | Approved | 2/1/2017 - 12/9/2021 | 1.7 - 7.8 | 1.8 | 2.6 | Y |
| 88 | Approved | 2/1/2017 - 12/9/2021 | 1.7 - 2.0 | 1.7 | 1.8 | Y |
| 744 | Approved | 2/1/2017 - 12/9/2021 | 1.7 - 4.5 | 1.8 | 2.5 | Y |

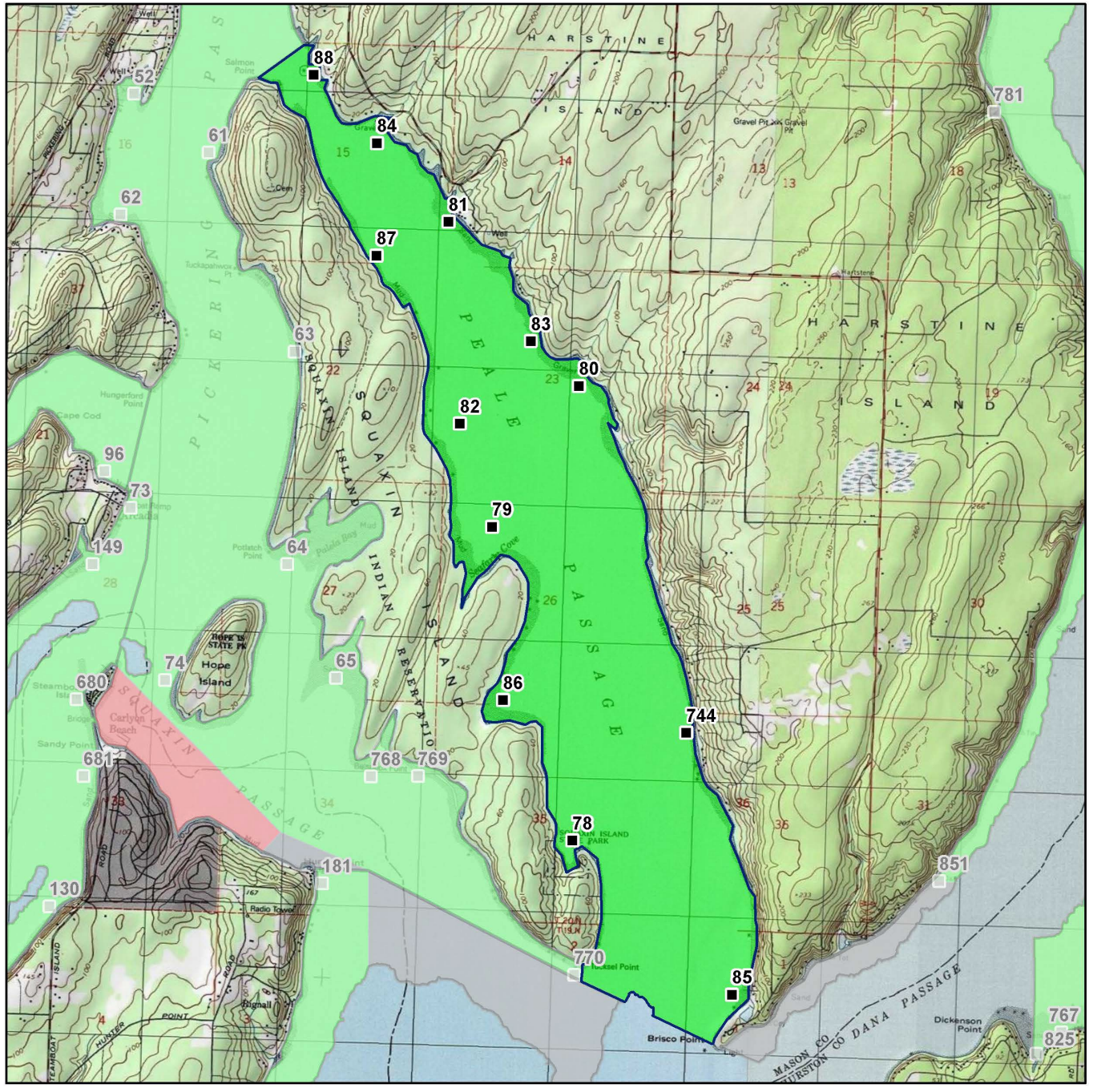
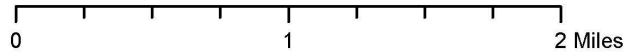
The standard for approved shellfish growing waters is fecal coliform geometric mean not greater than 14 organisms/ 100 mL with an estimated 90th percentile not greater than 43 organisms/ 100 mL. The above table shows bacteriological results in relation to program standards.

MAP 1. Peale Passage Growing Area

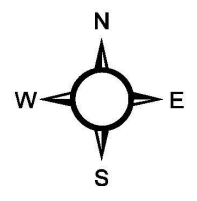
Peale Passage



Date Updated: 7/11/2018



| Classification | Sampling Stations |
|---|--|
| Approved | |
| Conditional | |
| Prohibited | |
| Restricted | |
| Unclassified | |



* Some sampling stations are highlighted with grey box for ease of reading.