

Penn Cove

Annual Shellfish Growing Area Review



Prepared By: Mark Toy

Area: Penn Cove

Year Ending: December 31, 2021

Classification: Conditionally Approved, Prohibited

Activities in the Growing Area in 2021

The growing area was sampled five times in accordance with National Shellfish Sanitation Program (NSSP) Systematic Random Sampling criteria. Weather and staffing shortage/COVID issues eliminated one sampling event. The Penn Cove Growing Area was closed for six days in November due to Skagit River flooding.

An annual evaluation of the Coupeville and Penn Cove Park wastewater treatment plants was completed and no additional changes to the classification or the CAAMP were needed.

The Coupeville Outfall Study (NTA 2018-0324) to evaluate the feasibility of adding stormwater treatment facilities to stormwater outfalls within the town limits of Coupeville is being implemented after delays partly due to the pandemic. Island County Public Health also received NEP funds to conduct enhanced onsite sewage system O&M and community outreach.

Analytical Results of Water Samples

Table 1 summarizes results of the 30 most recent samples collected from the area. This summary shows that all stations in the Conditionally Approved area meet the NSSP water quality standard, although Station 209 is Concerned.

Change in Actual Pollution Sources that Impact the Growing Area

We currently have no information indicating that the area has new sources of pollution.

Classification Status

- Well within the classification standards
- Meets standards, but some concerns
- Meets standards, but threatened with downgrade in classification
- Fails to meet current classification standards

Remarks and Recommendations

Current information indicates that the area is correctly classified as Conditionally Approved.

Management Plan Evaluation

1. Have all parties involved complied with the conditions of the management planYes
2. Has reporting been adequate to manage the conditional area.....Yes
3. Does the area consistently meet approved area criteria when it is open for harvest Yes
4. Has a field inspection of critical pollution sources been conducted Yes

TABLE 1. Summary of Marine Water Data (SRS) for the Penn Cove Growing Area

Sampling Event Type: Regulatory

Maximum Number of Samples: 30

Tides Included: All

Station Number	Classification	Date Range	Range (FC/100mL)	Geomean (FC/100mL)	Est. 90 th Percentile (FC/100mL)	Meets Standard
206	Conditionally Approved	9/17/2018 - 9/27/2021	1.7 - 11.0	2.0	3.4	Y
207	Conditionally Approved	9/17/2018 - 9/27/2021	1.7 - 6.8	2.1	3.6	Y
208	Conditionally Approved	9/17/2018 - 9/27/2021	1.7 - 11.0	2.1	4.2	Y
209	Conditionally Approved	9/17/2018 - 9/27/2021	1.7 - 240.0	3.8	22.3	Y
210	Conditionally Approved	9/17/2018 - 9/27/2021	1.7 - 33.0	2.5	7.1	Y
215	Conditionally Approved	9/17/2018 - 9/27/2021	1.7 - 7.8	2.2	3.9	Y
217	Conditionally Approved	9/17/2018 - 9/27/2021	1.7 - 7.8	2.3	4.2	Y
218	Conditionally Approved	9/17/2018 - 9/27/2021	1.7 - 11.0	2.1	4.0	Y
220	Conditionally Approved	9/17/2018 - 9/27/2021	1.7 - 33.0	2.1	4.5	Y
221	Conditionally Approved	9/17/2018 - 9/27/2021	1.7 - 13.0	1.9	3.2	Y
279	Conditionally Approved	9/17/2018 - 9/27/2021	1.7 - 7.8	2.0	3.3	Y
321	Conditionally Approved	9/17/2018 - 9/27/2021	1.7 - 7.8	1.9	3.1	Y
202	Prohibited	9/17/2018 - 9/27/2021	1.7 - 11.0	2.1	3.7	Y
204	Prohibited	8/6/2018 - 9/27/2021	1.7 - 22.0	2.6	6.1	Y
205	Prohibited	9/17/2018 - 9/27/2021	1.7 - 23.0	2.3	5.5	Y
211	Prohibited	9/17/2018 - 9/27/2021	1.7 - 7.8	2.0	3.4	Y
212	Prohibited	9/17/2018 - 9/27/2021	1.7 - 23.0	2.7	6.9	Y
216	Prohibited	9/17/2018 - 9/27/2021	1.7 - 11.0	2.1	3.8	Y
219	Prohibited	9/17/2018 - 9/27/2021	1.7 - 46.0	2.4	5.7	Y

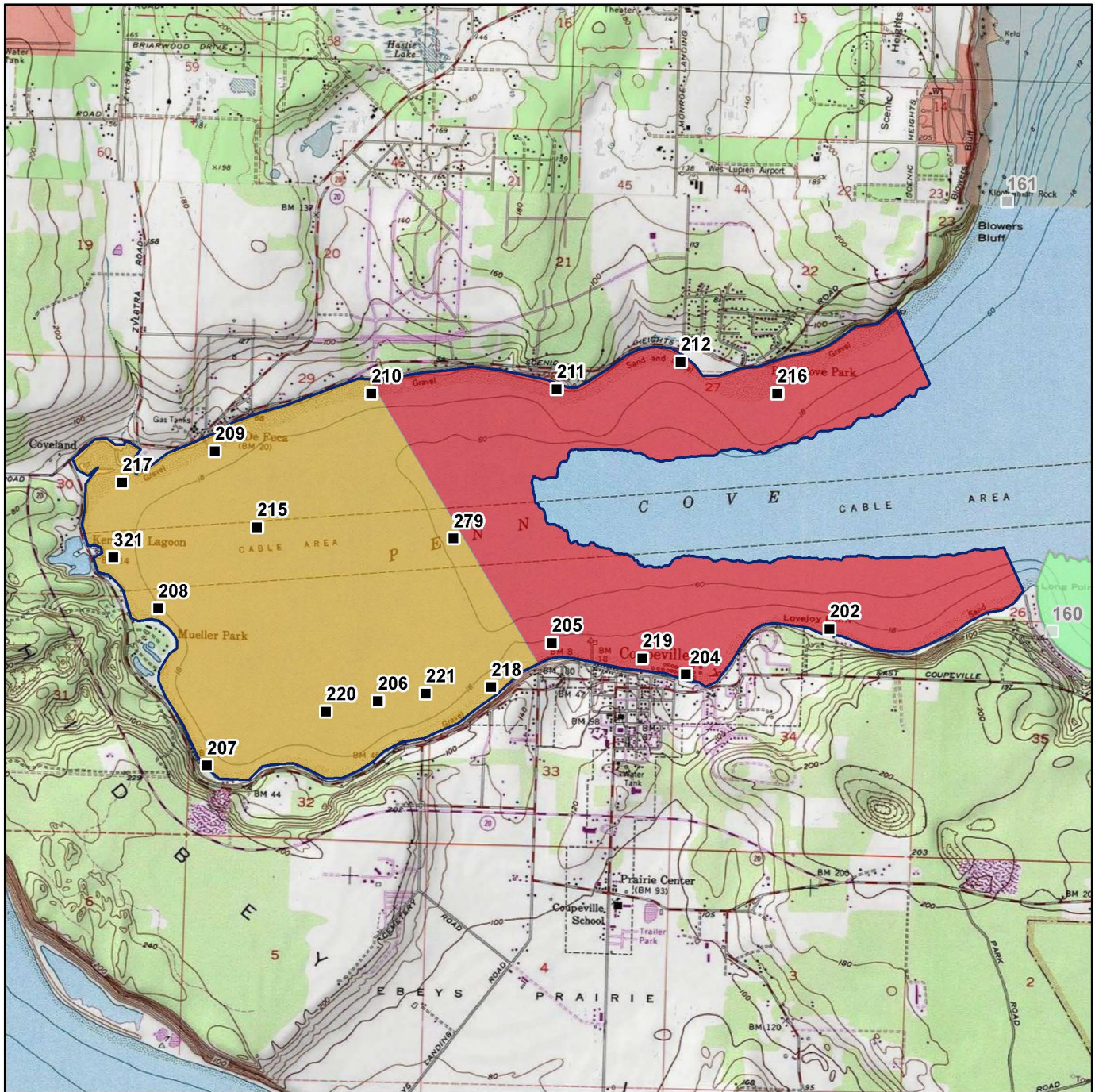
The standard for approved shellfish growing waters is fecal coliform geometric mean not greater than 14 organisms / 100 mL with not more than 10 percent greater than 43 organisms / 100 mL. The above table shows bacteriological results in relation to program standards

MAP 1. Penn Cove Growing Area

 Penn Cove

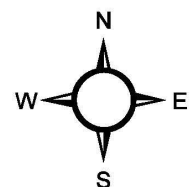


Date Updated: 7/11/2018



Classification Sampling Stations

-  Approved
-  Conditional
-  Prohibited
-  Restricted
-  Unclassified



* Some sampling stations are highlighted with grey box for ease of reading.