

Port Madison

Annual Shellfish Growing Area Review



Prepared By: Tim Jahraus

Area: Port Madison

Year Ending: December 31, 2022

Classification: Approved, Prohibited

Activities in the Growing Area in 2022

The growing area was sampled six times in accordance with National Shellfish Sanitation Program (NSSP) Systematic Random Sampling criteria. A routine three-year shoreline evaluation and follow-up sampling at three shoreline drainages were completed. Bacteria concentrations in the drainages had decreased but additional sampling will continue to determine potential impact to the growing area. No new or changes in pollution sources were identified. An evaluation of the Suquamish WWTP was completed and no changes to the closure zone are recommended. A comprehensive evaluation report is in the central growing area file.

Analytical Results of Water Samples

Table 1 summarizes the results the last 30 samples collected from the area. This summary shows that all stations pass the NSSP water quality standard.

Change in Actual Pollution Sources that Impact the Growing Area

We currently have no information indicating that the area has new sources of pollution.

Classification Status

- Well within the classification standards
- Meets standards, but some concerns
- Meets standards, but threatened with downgrade in classification
- Fails to meet current classification standards

Remarks and Recommendations

Table 1 shows that all stations meet the NSSP water quality standard for an Approved classification and the area is correctly classified.

TABLE 1. Summary of Marine Water Data (SRS) for the Port Madison Growing Area

Sampling Event Type: Regulatory

Maximum Number of Samples: 30

Tides Included: All

Station Number	Classification	Date Range	Range (FC/100mL)	Geomean (FC/100mL)	Est. 90 th Percentile (FC/100mL)	Meets Standard
508	Approved	2/26/2018 - 12/5/2022	1.7 - 4.5	1.9	2.5	Y
509	Approved	2/26/2018 - 12/5/2022	1.7 - 4.5	2.0	2.8	Y
510	Approved	2/26/2018 - 12/5/2022	1.7 - 4.5	1.8	2.3	Y
511	Approved	2/26/2018 - 12/5/2022	1.7 - 27.0	2.0	4.1	Y
512	Approved	2/26/2018 - 12/5/2022	1.7 - 4.5	1.8	2.5	Y
513	Approved	2/26/2018 - 12/5/2022	1.7 - 13.0	2.0	3.5	Y
514	Approved	2/26/2018 - 12/5/2022	1.7 - 9.2	1.9	2.9	Y
515	Approved	2/26/2018 - 12/5/2022	1.7 - 7.8	1.8	2.6	Y
516	Approved	2/26/2018 - 12/5/2022	1.7 - 17.0	2.0	3.7	Y
517	Approved	2/26/2018 - 12/5/2022	1.7 - 21.0	1.9	3.4	Y
518	Approved	2/26/2018 - 12/5/2022	1.7 - 4.5	1.8	2.5	Y
519	Approved	2/26/2018 - 12/5/2022	1.7 - 4.5	1.8	2.3	Y
520	Approved	2/26/2018 - 12/5/2022	1.7 - 7.8	1.8	2.6	Y
521	Approved	2/26/2018 - 12/5/2022	1.7 - 13.0	1.9	3.0	Y
522	Approved	2/26/2018 - 12/5/2022	1.7 - 17.0	2.0	3.6	Y
597	Approved	2/26/2018 - 12/5/2022	1.7 - 49.0	2.2	5.4	Y

TABLE 1. Continued

Station Number	Classification	Date Range	Range (FC/100mL)	Geomean (FC/100mL)	Est. 90 th Percentile (FC/100mL)	Meets Standard
602	Approved	2/26/2018 - 12/5/2022	1.7 - 7.8	1.9	2.7	Y
637	Approved	2/26/2018 - 12/5/2022	1.7 - 6.1	1.9	2.7	Y
638	Approved	2/26/2018 - 12/5/2022	1.7 - 17.0	1.9	3.4	Y
648	Approved	2/26/2018 - 12/5/2022	1.7 - 17.0	2.8	7.4	Y
773	Approved	2/26/2018 - 12/5/2022	1.7 - 7.8	2.0	3.1	Y

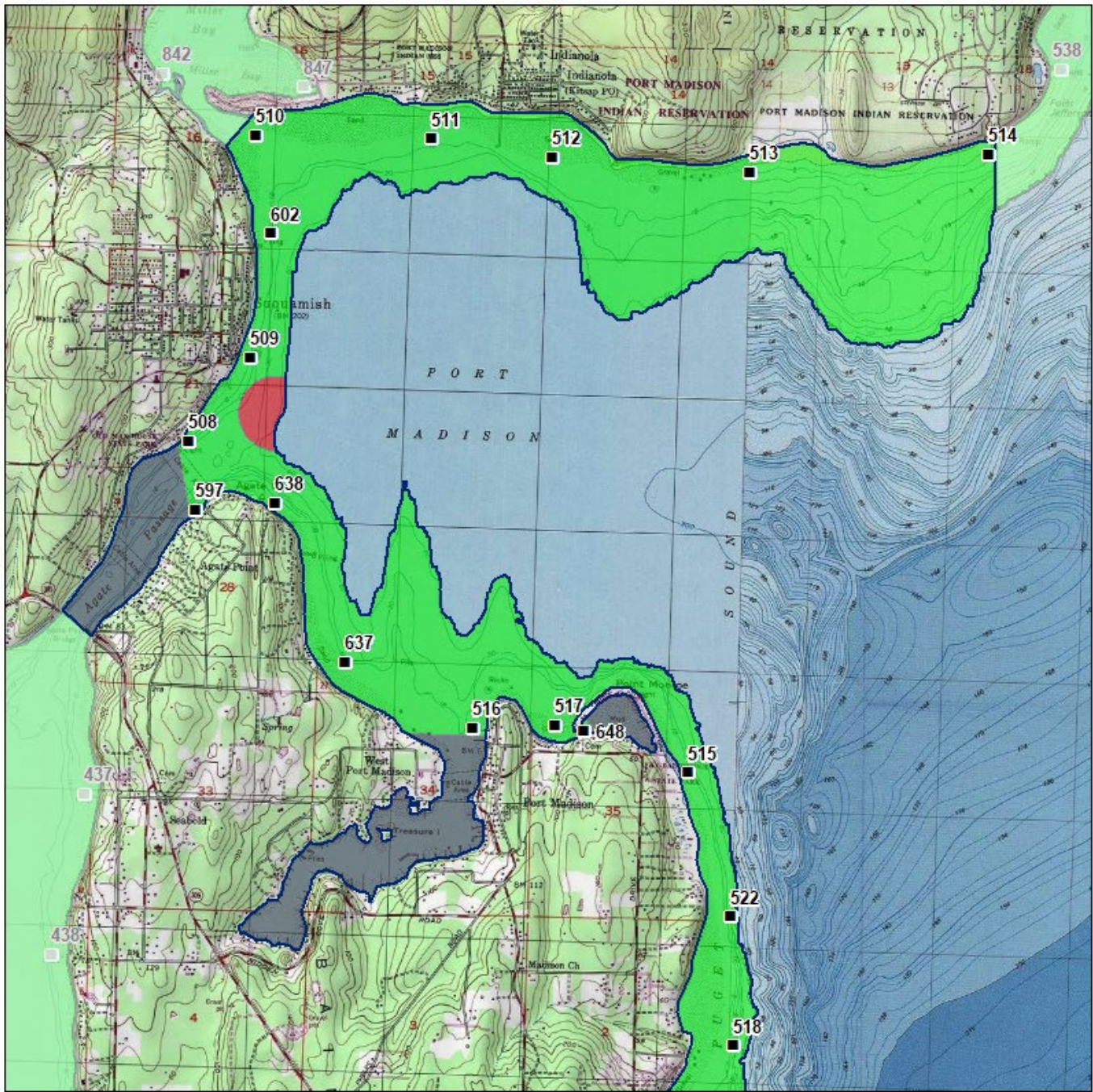
The standard for approved shellfish growing waters is fecal coliform geometric mean not greater than 14 organisms/ 100 mL with an estimated 90th percentile not greater than 43 organisms/ 100 mL. The above table shows bacteriological results in relation to program standards.

MAP 1. Port Madison Growing Area Map 1 of 2

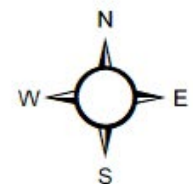
Port Madison (1 of 2)



Date Updated: 4/30/2020



Classification		Sampling Stations
■	Approved	■
■	Conditional	
■	Prohibited	
■	Restricted	
■	Unclassified	



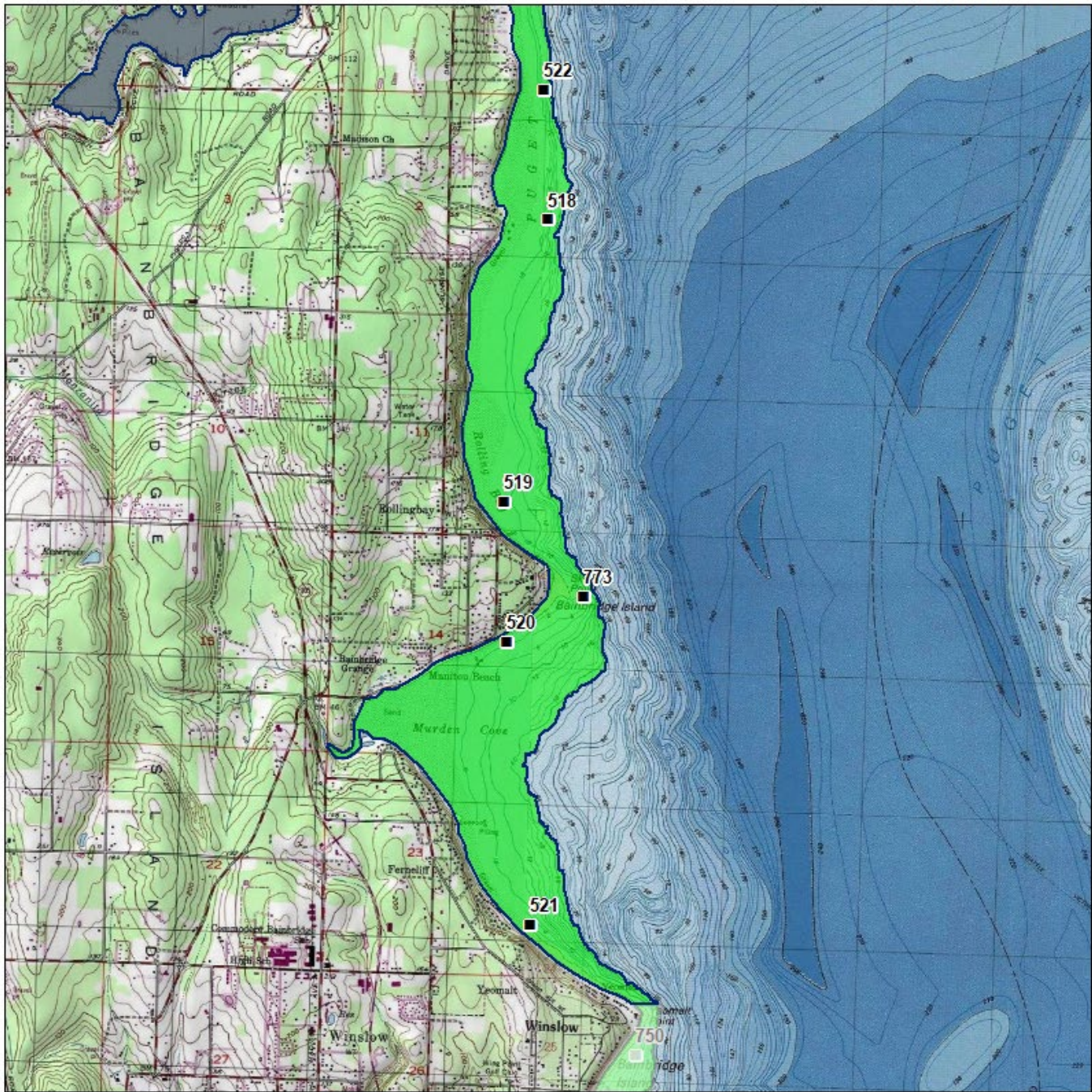
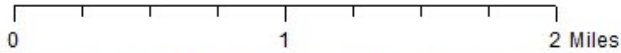
* Some sampling stations are highlighted with grey box for ease of reading.






MAP 2. Port Madison Growing Area Map 2 of 2

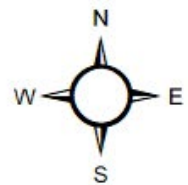
Port Madison (2 of 2)



Date Updated: 4/30/2020



Classification		Sampling Stations
	Approved	
	Conditional	
	Prohibited	
	Restricted	
	Unclassified	



* Some sampling stations are highlighted with grey box for ease of reading.