

Port Orchard Passage

Annual Shellfish Growing Area Review



Prepared By: Tim Jahraus

Area: Port Orchard Passage

Year Ending: December 31, 2021

Classification: Approved, Prohibited

Activities in the Growing Area in 2021

The growing area was sampled a minimum of six times in accordance with National Shellfish Sanitation Program (NSSP) Systematic Random Sampling criteria. A routine shoreline survey was completed. Three Indirect Impacts were identified in the form of nonpoint pollution and resulted in small closures around shoreline drainage sites 702, 725, and 788. Additionally, two historical Indirect Impacts remain. A portion of the Port Orchard Passage Growing Area, from the Agate Pass Bridge south to a line from Point Bolin east to Bainbridge Island was closed for 21 days in January due to an illness outbreak.

Analytical Results of Water Samples

Table 1 summarizes the results of the last 30 samples collected from the area. This summary shows that all stations pass the NSSP water quality standard.

Change in Actual Pollution Sources that Impact the Growing Area

Small areas around shoreline drainage sites 702, 725, and 788 were put into Closed status due to nonpoint pollution sources.

Classification Status

- Well within the classification standards
- Meets standards, but some concerns
- Meets standards, but threatened with downgrade in classification
- Fails to meet current classification standards

Remarks and Recommendations

Table 1 shows that all stations meet the NSSP water quality standard for an Approved classification and the area is correctly classified.

TABLE 1. Summary of Marine Water Data (SRS) for the Port Orchard Passage

Sampling Event Type: Regulatory

Maximum Number of Samples: 30

Tides Included: All

Station Number	Classification	Date Range	Range (FC/100mL)	Geomean (FC/100mL)	Est. 90 th Percentile (FC/100mL)	Meets Standard
436	Approved	12/19/2016 - 11/22/2021	1.7 - 79.0	2.1	5.9	Y
437	Approved	12/19/2016 - 11/22/2021	1.7 - 3.7	1.8	2.1	Y
438	Approved	12/19/2016 - 11/22/2021	1.7 - 4.5	1.9	2.5	Y
439	Approved	12/19/2016 - 11/22/2021	1.7 - 31.0	1.9	3.8	Y
440	Approved	12/19/2016 - 11/22/2021	1.7 - 2.0	1.8	1.9	Y
441	Approved	12/19/2016 - 11/22/2021	1.7 - 17.0	2.2	4.4	Y
443	Approved	12/19/2016 - 11/22/2021	1.7 - 7.8	1.9	2.9	Y
444	Approved	12/19/2016 - 11/22/2021	1.7 - 540.0	2.3	9.4	Y
445	Approved	12/19/2016 - 11/22/2021	1.7 - 7.8	2.0	3.5	Y
446	Approved	12/19/2016 - 11/22/2021	1.7 - 33.0	2.2	5.7	Y
448	Approved	11/30/2016 - 11/22/2021	1.7 - 4.0	1.8	2.2	Y
449	Approved	12/19/2016 - 11/22/2021	1.7 - 23.0	2.2	4.3	Y
450	Approved	12/19/2016 - 11/22/2021	1.7 - 4.5	2.0	2.9	Y
451	Approved	12/19/2016 - 11/22/2021	1.7 - 70.0	2.2	5.8	Y
452	Approved	12/19/2016 - 11/22/2021	1.7 - 11.0	1.9	3.0	Y
453	Approved	12/19/2016 - 11/22/2021	1.7 - 4.0	1.8	2.2	Y
454	Approved	12/19/2016 - 11/22/2021	1.7 - 110.0	2.7	8.8	Y
455	Approved	12/19/2016 - 11/22/2021	1.7 - 6.8	1.8	2.5	Y
456	Approved	12/19/2016 - 11/22/2021	1.7 - 13.0	1.9	3.3	Y
457	Approved	12/19/2016 - 11/22/2021	1.7 - 33.0	3.3	11.4	Y
504	Approved	12/19/2016 - 11/22/2021	1.7 - 21.0	2.1	4.2	Y
505	Approved	12/19/2016 - 11/22/2021	1.7 - 14.0	1.9	3.0	Y
506	Approved	12/19/2016 - 11/22/2021	1.7 - 4.5	1.9	2.6	Y
583	Approved	12/19/2016 - 11/22/2021	1.7 - 2.0	1.7	1.8	Y
603	Approved	12/19/2016 - 11/22/2021	1.7 - 33.0	2.5	6.4	Y
753	Approved	12/19/2016 - 11/22/2021	1.7 - 23.0	2.5	6.1	Y
754	Approved	12/19/2016 - 11/22/2021	1.7 - 920.0	2.7	12.7	Y
755	Approved	12/19/2016 - 11/22/2021	1.7 - 11.0	1.9	3.1	Y
782	Approved	12/19/2016 - 11/22/2021	1.7 - 11.0	2.1	3.7	Y
815	Approved	12/19/2016 - 11/22/2021	1.7 - 13.0	2.0	3.3	Y
442	Prohibited	12/19/2016 - 11/22/2021	1.7 - 14.0	2.0	3.7	Y

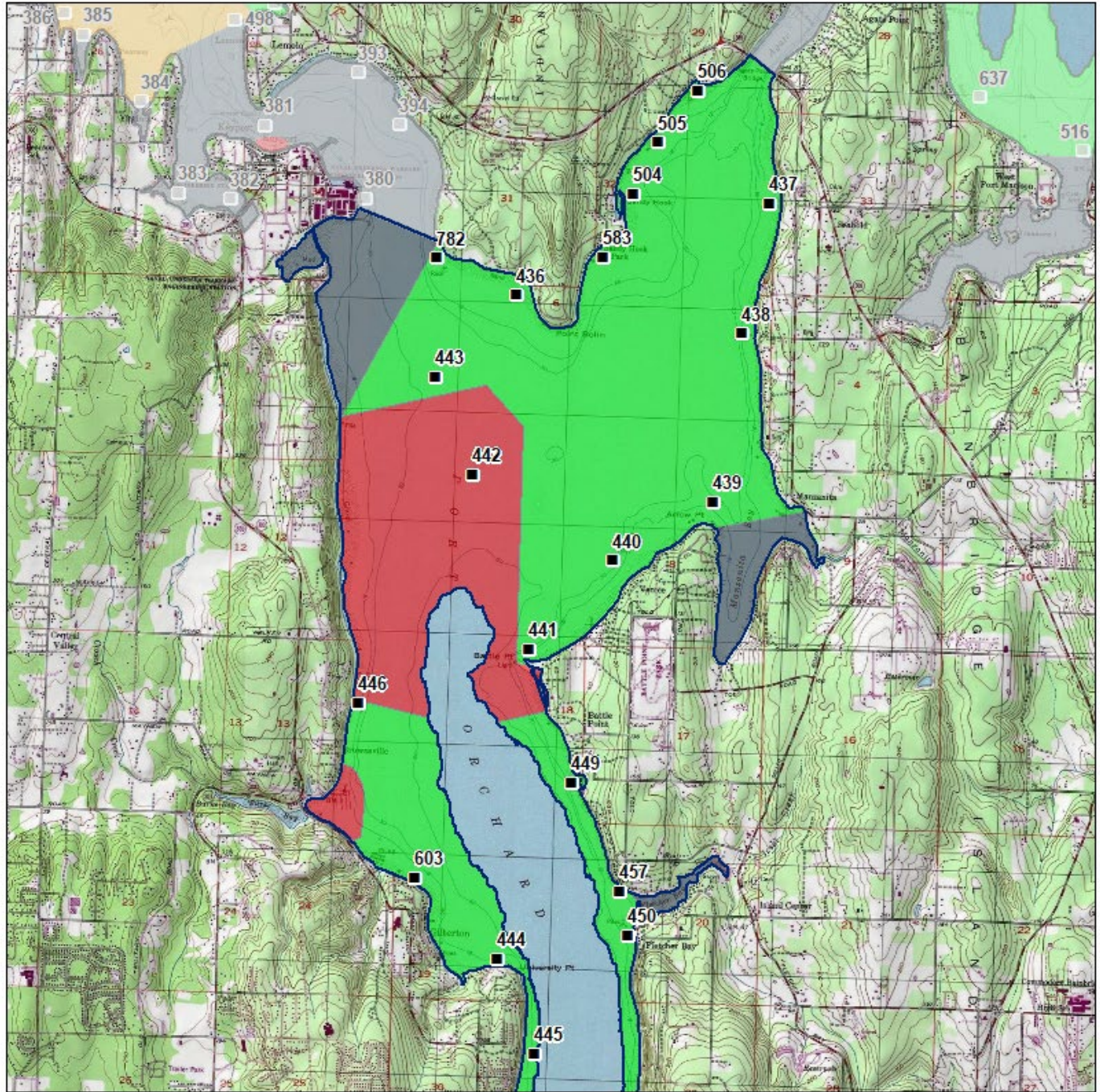
The standard for approved shellfish growing waters is fecal coliform geometric mean not greater than 14 organisms/ 100 mL with an estimated 90th percentile not greater than 43 organisms/ 100 mL. The above table shows bacteriological results in relation to program standards.

MAP 1. Port Orchard Passage Growing Area 1 of 2

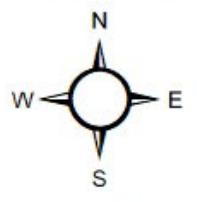
Port Orchard Passage (1 of 2)

0 1 2 Miles

Washington State Department of Health
 Date Updated: 4/30/2020



Classification	Sampling Stations
■ Approved	■
■ Conditional	
■ Prohibited	
■ Restricted	
■ Unclassified	



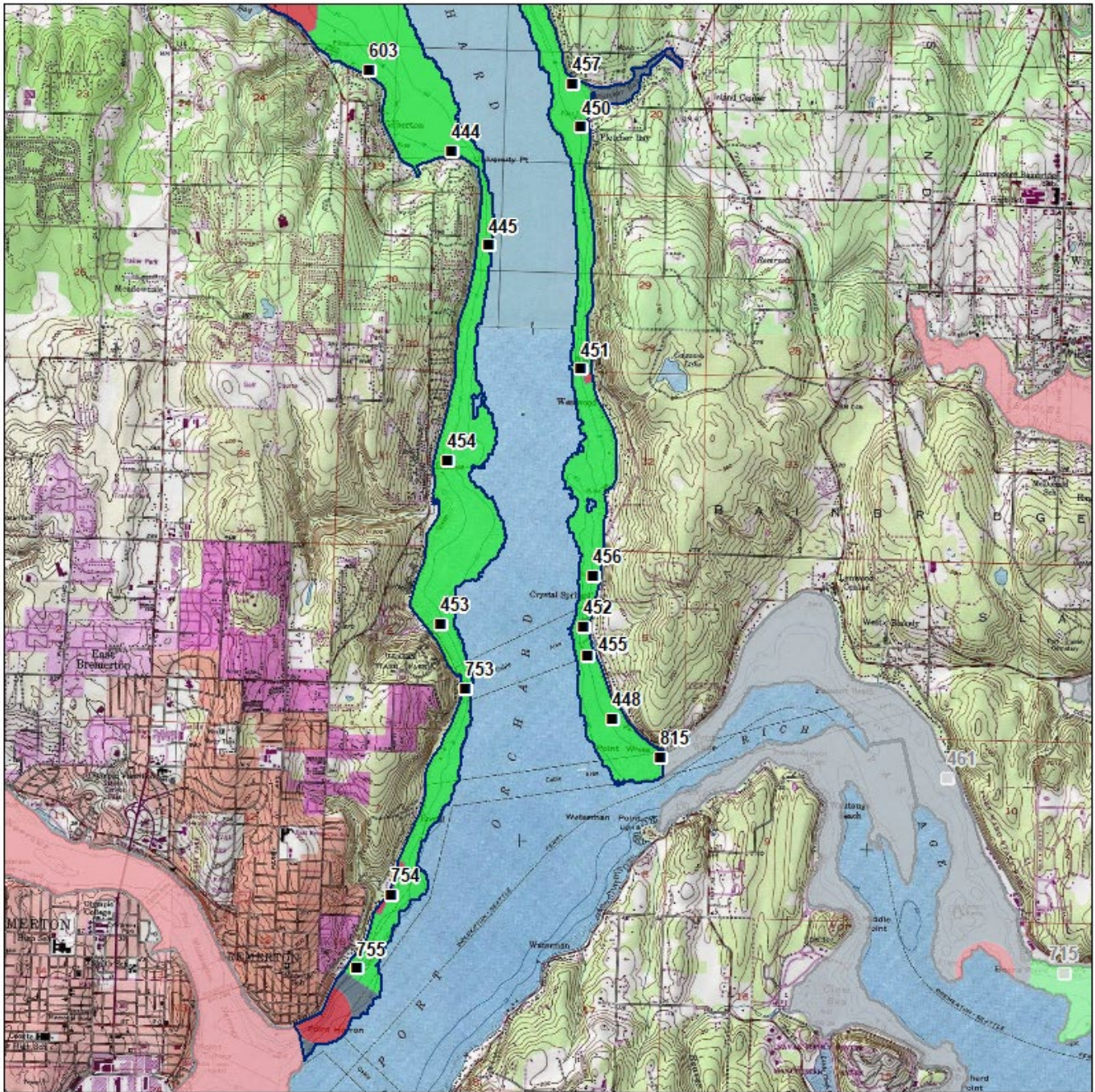
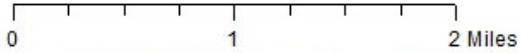
* Some sampling stations are highlighted with grey box for ease of reading.

MAP 2. Port Orchard Passage Growing Area 2 of 2

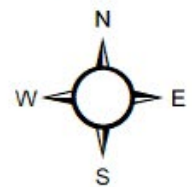
Port Orchard Passage (2 of 2)



Date Updated: 4/30/2020



Classification	Sampling Stations
Approved	Sampling Station
Conditional	
Prohibited	
Restricted	
Unclassified	



* Some sampling stations are highlighted with grey box for ease of reading.