

# Port Orchard Passage

## Annual Shellfish Growing Area Review



Prepared By: Patrick Biondo

Area: Port Orchard Passage

Year Ending: December 31, 2022

Classification: Approved, Prohibited

### Activities in the Growing Area in 2022

The growing area was sampled six times in accordance with National Shellfish Sanitation Program (NSSP) Systematic Random Sampling criteria. No additional activities have been documented in the growing area.

### Analytical Results of Water Samples

Table 1 summarizes the results of the last 30 samples collected from the area. This summary shows that all stations pass the NSSP water quality standard.

### Change in Actual Pollution Sources that Impact the Growing Area

We currently have no information indicating that the area has new sources of pollution.

### Classification Status

- Well within the classification standards
- Meets standards, but some concerns
- Meets standards, but threatened with downgrade in classification
- Fails to meet current classification standards

### Remarks and Recommendations

Table 1 shows that all stations meet the NSSP water quality standard for an Approved classification and the area is correctly classified.

**TABLE 1. Summary of Marine Water Data (SRS) for the Port Orchard Passage Growing Area**

Sampling Event Type: Regulatory

Maximum Number of Samples: 30

Tides Included: All

Station Number	Classification	Date Range	Range (FC/100mL)	Geomean (FC/100mL)	Est. 90 <sup>th</sup> Percentile (FC/100mL)	Meets Standard
436	Approved	11/7/2017 - 12/29/2022	1.7 - 79.0	2.2	6.8	Y
437	Approved	11/7/2017 - 12/29/2022	1.7 - 7.8	1.9	3.0	Y
438	Approved	11/7/2017 - 12/29/2022	1.7 - 22.0	2.0	3.9	Y
439	Approved	11/7/2017 - 12/29/2022	1.7 - 31.0	2.0	3.8	Y
440	Approved	11/7/2017 - 12/29/2022	1.7 - 4.5	1.8	2.3	Y
441	Approved	11/7/2017 - 12/29/2022	1.7 - 17.0	2.1	4.1	Y
443	Approved	11/7/2017 - 12/29/2022	1.7 - 11.0	2.1	3.8	Y
444	Approved	11/7/2017 - 12/29/2022	1.7 - 540.0	2.5	9.8	Y
445	Approved	11/7/2017 - 12/29/2022	1.7 - 23.0	2.2	4.6	Y
446	Approved	11/7/2017 - 12/29/2022	1.7 - 33.0	2.3	5.8	Y
448	Approved	9/14/2017 - 12/29/2022	1.7 - 7.8	2.0	3.1	Y
449	Approved	11/7/2017 - 12/29/2022	1.7 - 23.0	2.3	5.0	Y
450	Approved	11/7/2017 - 12/29/2022	1.7 - 6.8	2.0	3.1	Y
451	Approved	11/7/2017 - 12/29/2022	1.7 - 70.0	2.1	5.2	Y
452	Approved	11/7/2017 - 12/29/2022	1.7 - 49.0	2.3	6.0	Y
453	Approved	11/7/2017 - 12/29/2022	1.7 - 4.5	1.9	2.5	Y
454	Approved	11/7/2017 - 12/29/2022	1.7 - 110.0	3.0	11.0	Y
455	Approved	11/7/2017 - 12/29/2022	1.7 - 6.8	1.8	2.5	Y
456	Approved	11/7/2017 - 12/29/2022	1.7 - 31.0	2.1	4.7	Y
457	Approved	11/7/2017 - 12/29/2022	1.7 - 64.0	3.9	15.8	Y
504	Approved	11/7/2017 - 12/29/2022	1.7 - 22.0	2.2	4.5	Y

**TABLE 1. Continued**

Station Number	Classification	Date Range	Range (FC/100mL)	Geomean (FC/100mL)	Est. 90 <sup>th</sup> Percentile (FC/100mL)	Meets Standard
505	Approved	11/7/2017 - 12/29/2022	1.7 - 14.0	2.0	3.7	Y
506	Approved	11/7/2017 - 12/29/2022	1.7 - 4.5	1.9	2.6	Y
583	Approved	11/7/2017 - 12/29/2022	1.7 - 2.0	1.7	1.9	Y
603	Approved	11/7/2017 - 12/29/2022	1.7 - 33.0	3.0	10.3	Y
753	Approved	11/7/2017 - 12/29/2022	1.7 - 23.0	2.8	7.3	Y
754	Approved	9/14/2017 - 12/29/2022	1.7 - 920.0	2.9	13.5	Y
755	Approved	11/7/2017 - 12/29/2022	1.7 - 49.0	2.2	5.3	Y
782	Approved	11/7/2017 - 12/29/2022	1.7 - 23.0	2.4	5.5	Y
815	Approved	11/7/2017 - 12/29/2022	1.7 - 49.0	2.2	5.4	Y
442	Prohibited	11/7/2017 - 12/29/2022	1.7 - 14.0	2.2	4.8	Y

The standard for approved shellfish growing waters is fecal coliform geometric mean not greater than 14 organisms/ 100 mL with an estimated 90th percentile not greater than 43 organisms/ 100 mL. The above table shows bacteriological results in relation to program standards.

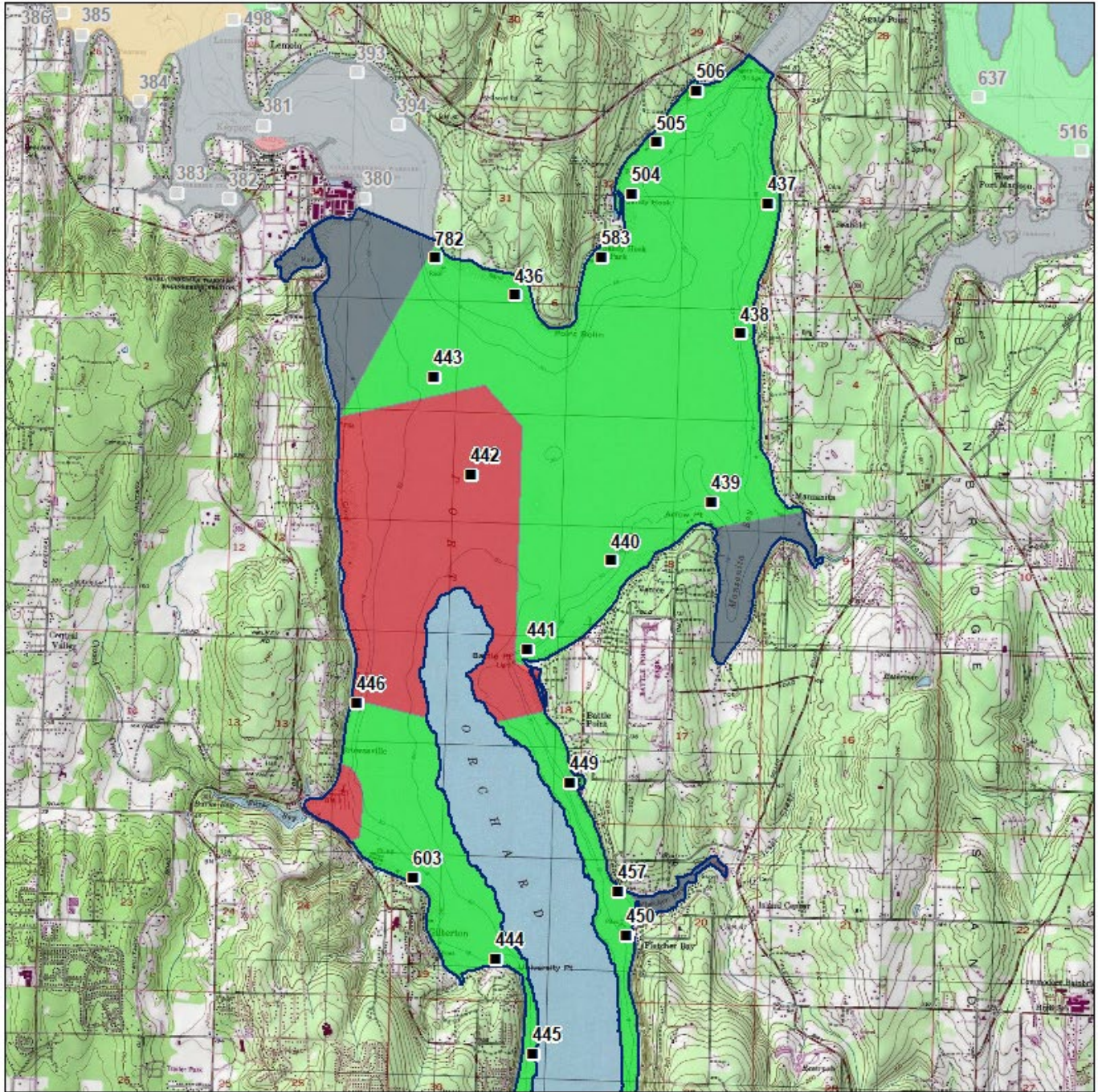
MAP 1. Port Orchard Passage Growing Area 1 of 2

Port Orchard Passage (1 of 2)

0 1 2 Miles



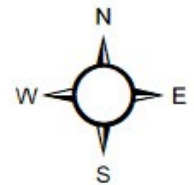
Date Updated: 4/30/2020



Classification

- Approved
- Conditional
- Prohibited
- Restricted
- Unclassified

Sampling Stations



\* Some sampling stations are highlighted with grey box for ease of reading.

MAP 2. Port Orchard Passage Growing Area 2 of 2

