

# Saratoga Passage

## Annual Shellfish Growing Area Review



Prepared By: Merita Trohimovich

Area: Saratoga Passage

Year Ending: December 31, 2024

Classification: Approved, Prohibited

### Activities in the Growing Area in 2024

The growing area was sampled six times in accordance with the National Shellfish Sanitation Program (NSSP) Systematic Random Sampling criteria.

A dye and microbial study were completed at the Oak Harbor Clean Water Facility (CWF) in September 2022. Work to finalize this report continued in 2024 and the report is expected to be completed in 2025. An evaluation of the Langley Marina was completed. Based on current conditions, the Prohibited area could be reduced. A Sanitary Survey Addendum will be completed to change the classification based on the new evaluation. A comprehensive evaluation report is in the central growing area file.

### Analytical Results of Water Samples

Table 1 summarizes the results of the last 30 samples collected from the area. This summary shows that all stations pass the NSSP water quality standard. Station 227 is located in the Possession Sound Shellfish Growing Area and supports the growing area boundary along Camano Island.

### Change in Actual Pollution Sources that Impact the Growing Area

We currently have no information indicating that the area has new sources of pollution.

### Classification Status

- Well within the classification standards
- Meets standards, but threatened with downgrade in classification
- Fails to meet current classification standards

### Remarks and Recommendations

Table 1 shows that all stations meet the NSSP water quality standard for an Approved classification and the area is correctly classified. Complete the Oak Harbor CWF Dye Study Report. Review the entire Saratoga Passage growing area and prepare a Sanitary Survey Addendum to make any needed classification changes.

**TABLE 1. Summary of Marine Water Data (SRS) for the Saratoga Passage Growing Area**

Sampling Event Type: Regulatory

Maximum Number of Samples: 30

Tides Included: All

Station Number	Classification	Date Range	Range (FC/100mL)	Geomean (FC/100mL)	Est. 90 <sup>th</sup> Percentile (FC/100mL)	Meets Standard
133	Approved	12/9/2019 - 12/2/2024	1.7 - 4.5	1.8	2.5	Y
135	Approved	7/26/2016 - 12/2/2024	1.7 - 13.0	1.9	3.0	Y
137	Approved	7/26/2016 - 12/2/2024	1.7 - 7.8	1.8	2.6	Y
139	Approved	7/26/2016 - 12/2/2024	1.7 - 7.8	1.8	2.6	Y
140	Approved	12/9/2019 - 12/2/2024	1.7 - 4.5	1.8	2.2	Y
141	Approved	12/9/2019 - 12/2/2024	1.7 - 2.0	1.7	1.8	Y
147	Approved	10/20/2016 - 12/18/2024	1.7 - 4.0	1.8	2.2	Y
148	Approved	11/25/2019 - 12/18/2024	1.7 - 4.5	1.8	2.5	Y
149	Approved	11/25/2019 - 12/18/2024	1.7 - 2.0	1.7	1.8	Y
150	Approved	11/25/2019 - 12/18/2024	1.7 - 17.0	1.9	3.4	Y
151	Approved	9/15/2016 - 12/18/2024	1.7 - 4.0	1.8	2.2	Y
152	Approved	9/15/2016 - 12/18/2024	1.7 - 4.5	1.8	2.5	Y
153	Approved	11/25/2019 - 12/18/2024	1.7 - 6.8	1.9	2.7	Y
154	Approved	11/25/2019 - 12/18/2024	1.7 - 4.5	1.8	2.5	Y
156	Approved	11/25/2019 - 12/18/2024	1.7 - 2.0	1.8	1.9	Y
157	Approved	7/26/2016 - 12/2/2024	1.7 - 8.2	1.8	2.6	Y
158	Approved	12/9/2019 - 12/2/2024	1.7 - 17.0	1.9	3.4	Y
159	Approved	12/9/2019 - 12/2/2024	1.7 - 2.0	1.8	1.9	Y
160	Approved	12/9/2019 - 12/2/2024	1.7 - 6.8	1.9	3.0	Y
227	Approved	2/11/2020 - 12/18/2024	1.7 - 9.3	1.9	3.0	Y
241	Approved	11/25/2019 - 12/18/2024	1.7 - 4.5	1.8	2.5	Y
274	Approved	11/25/2019 - 12/18/2024	1.7 - 33.0	1.9	3.8	Y
275	Approved	11/25/2019 - 12/18/2024	1.7 - 4.5	1.8	2.5	Y
276	Approved	9/15/2016 - 12/18/2024	1.7 - 4.5	1.8	2.3	Y
277	Approved	9/15/2016 - 12/18/2024	1.7 - 7.8	1.8	2.6	Y
289	Approved	7/26/2016 - 12/2/2024	1.7 - 1.7	1.7	1.7	Y
330	Approved	10/20/2016 - 12/18/2024	1.7 - 4.5	1.8	2.3	Y
359	Approved	12/9/2019 - 12/2/2024	1.7 - 7.8	2.1	3.5	Y
360	Approved	12/9/2019 - 12/2/2024	1.7 - 4.0	1.8	2.2	Y
242	Prohibited	11/25/2019 - 12/18/2024	1.7 - 49.0	2.6	7.1	Y
161	Unclassified	12/9/2019 - 12/2/2024	1.7 - 7.8	2.0	3.4	Y

The standard for approved shellfish growing waters is fecal coliform geometric mean not greater than 14 organisms/ 100 mL with an estimated 90th percentile not greater than 43 organisms/ 100 mL. The above table shows bacteriological results in relation to program standards.

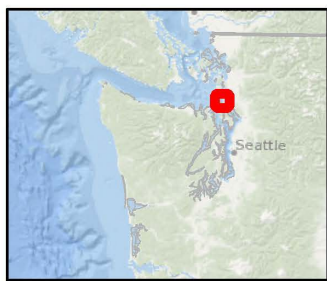
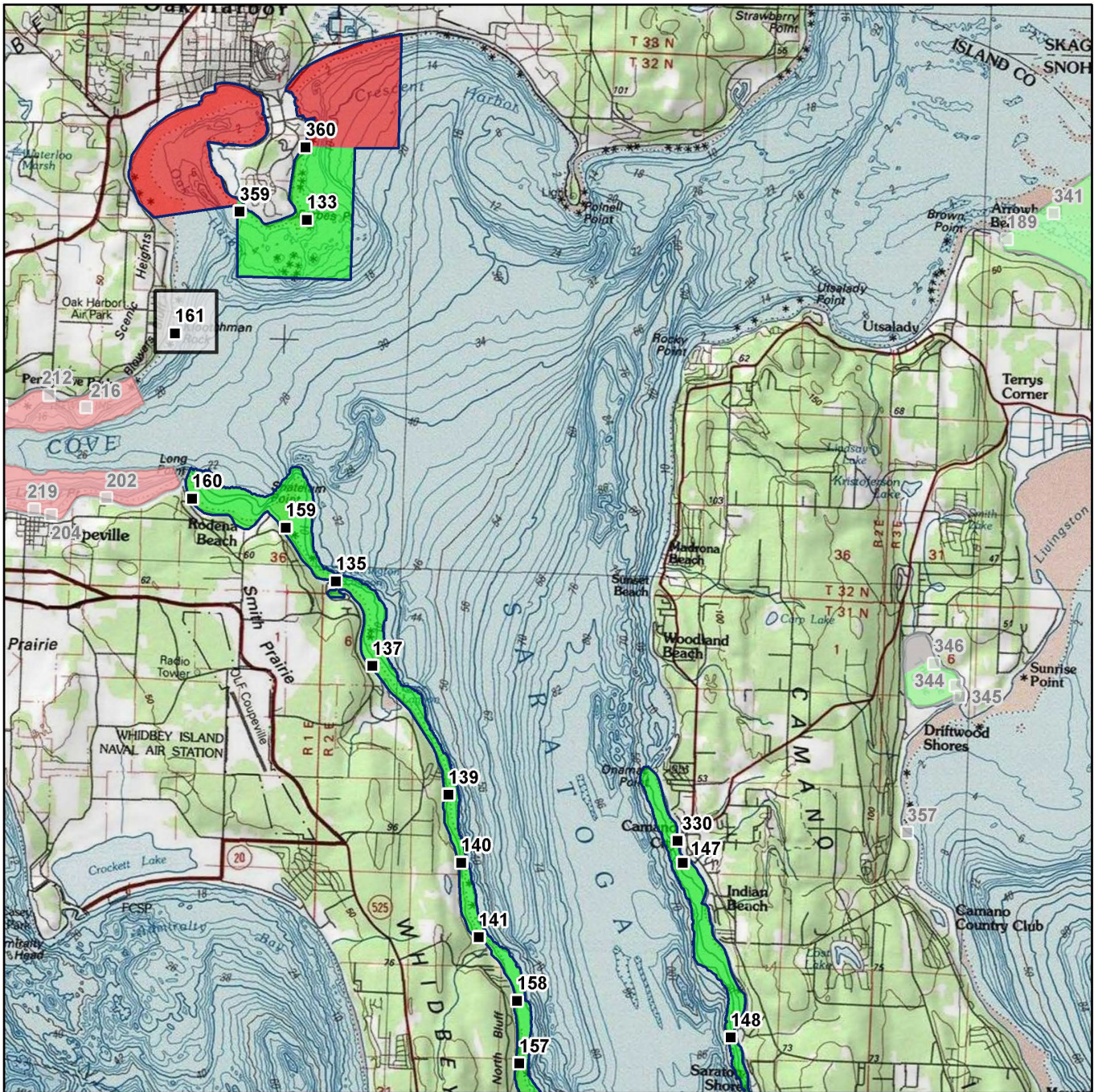
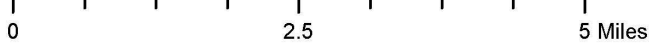


MAP 1. Saratoga Passage Growing Area (1 of 2)

Saratoga Pass (1 of 2)

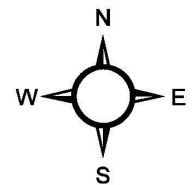


Date Updated: 7/11/2018



- Classification**
- Approved
  - Conditional
  - Prohibited
  - Restricted
  - Unclassified

- Sampling Stations**
- 



\* Some sampling stations are highlighted with grey box for ease of reading.

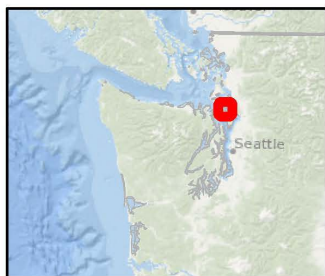
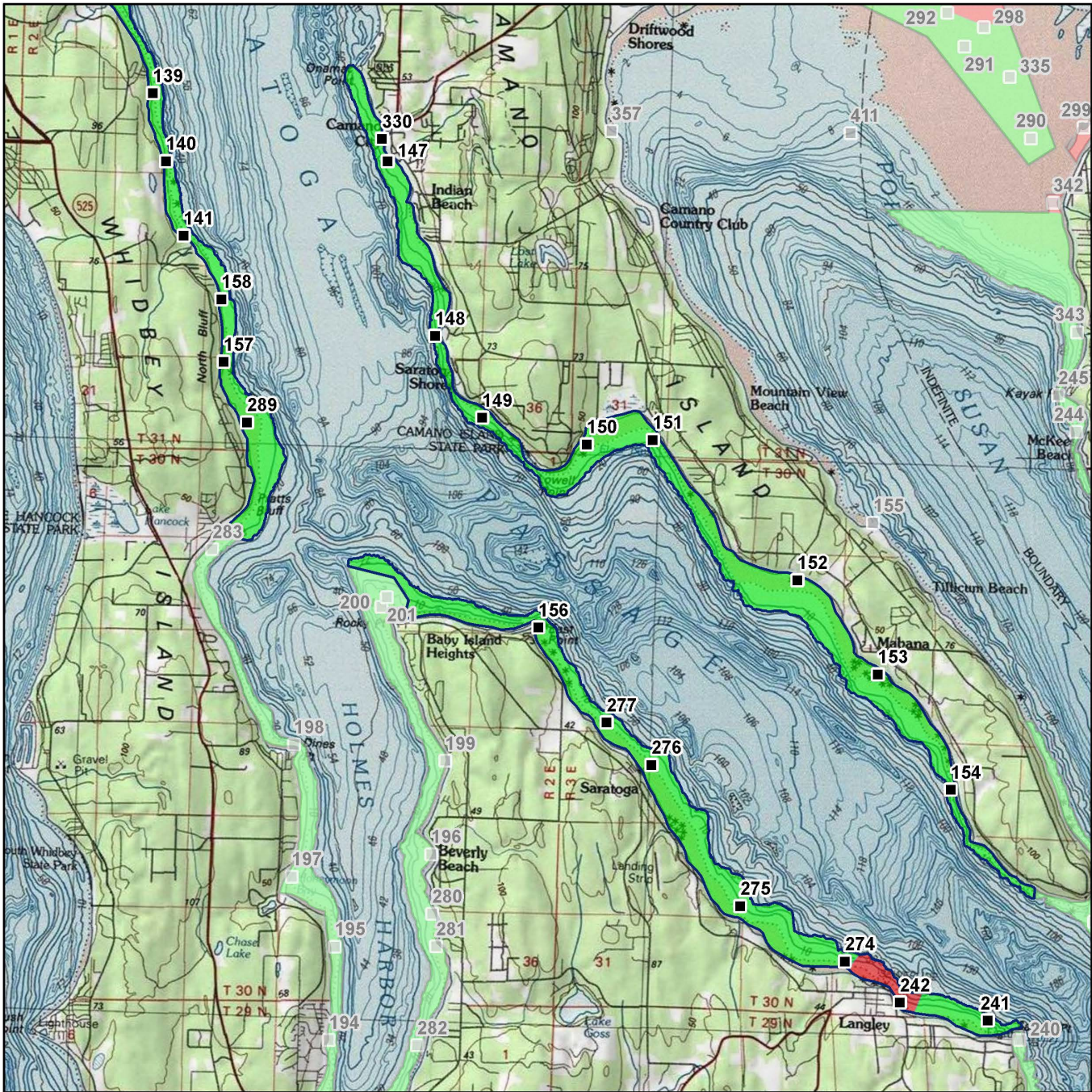
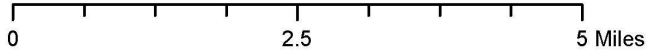


MAP 2. Saratoga Passage Growing Area (2 of 2)

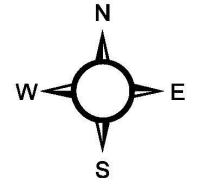
Saratoga Pass (2 of 2)



Date Updated: 7/11/2018



Classification	Sampling Stations
<span style="display:inline-block; width:15px; height:15px; background-color:green;"></span> Approved	<span style="display:inline-block; width:10px; height:10px; background-color:black;"></span>
<span style="display:inline-block; width:15px; height:15px; background-color:orange;"></span> Conditional	
<span style="display:inline-block; width:15px; height:15px; background-color:red;"></span> Prohibited	
<span style="display:inline-block; width:15px; height:15px; background-color:blue;"></span> Restricted	
<span style="display:inline-block; width:15px; height:15px; background-color:grey;"></span> Unclassified	



\* Some sampling stations are highlighted with grey box for ease of reading.