

Three Tree Point

Annual Shellfish Growing Area Review



Prepared By: Merita Trohimovich
Area: Three Tree Point
Year Ending: December 31, 2024
Classification: Approved, Prohibited

Activities in the Growing Area in 2024

The growing area was sampled six times in accordance with the National Shellfish Sanitation Program (NSSP) Systematic Random Sampling criteria. A routine three-year shoreline evaluation was completed and no new or changes in pollution sources were identified.

Analytical Results of Water Samples

Table 1 summarizes the results of the last 30 samples collected from the area. This summary shows that all stations pass the NSSP water quality standard.

Change in Actual Pollution Sources that Impact the Growing Area

We currently have no information indicating that the area has new sources of pollution.

Classification Status

- ☒ Well within the classification standards
- ☐ Meets standards, but threatened with downgrade in classification
- ☐ Fails to meet current classification standards

Remarks and Recommendations

Table 1 shows that all stations meet the NSSP water quality standard for an Approved classification and the area is correctly classified.

TABLE 1. Summary of Marine Water Data (SRS) for the Three Tree Point Growing Area

Sampling Event Type: Regulatory

Maximum Number of Samples: 30

Tides Included: All

Station Number	Classification	Date Range	Range (FC/100mL)	Geomean (FC/100mL)	Est. 90 th Percentile (FC/100mL)	Meets Standard
783	Approved	2/20/2020 - 12/12/2024	1.7 - 13.0	2.2	4.6	Y
784	Approved	2/20/2020 - 12/12/2024	1.7 - 7.8	1.8	2.7	Y
787	Approved	9/3/2019 - 12/12/2024	1.7 - 2.0	1.7	1.8	Y
789	Approved	2/20/2020 - 12/12/2024	1.7 - 17.0	2.0	3.7	Y
791	Approved	2/20/2020 - 12/12/2024	1.7 - 7.8	2.0	3.3	Y
792	Approved	11/14/2019 - 12/12/2024	1.7 - 49.0	2.2	5.4	Y
793	Approved	2/20/2020 - 12/12/2024	1.7 - 46.0	2.3	5.6	Y
794	Approved	2/20/2020 - 12/12/2024	1.7 - 7.8	2.1	3.6	Y
796	Approved	2/20/2020 - 12/12/2024	1.7 - 22.0	2.1	4.5	Y
786	Prohibited	2/20/2020 - 12/12/2024	1.7 - 33.0	2.6	7.7	Y
790	Prohibited	2/20/2020 - 12/12/2024	1.7 - 49.0	2.7	8.8	Y
785	Unclassified	2/20/2020 - 12/12/2024	1.7 - 7.8	2.2	3.8	Y
788	Unclassified	2/20/2020 - 12/12/2024	1.7 - 13.0	2.0	3.8	Y
795	Unclassified	2/20/2020 - 12/12/2024	1.7 - 22.0	2.2	4.3	Y
797	Unclassified	2/20/2020 - 12/12/2024	1.7 - 7.8	1.8	2.6	Y

The standard for approved shellfish growing waters is fecal coliform geometric mean not greater than 14 organisms/ 100 mL with an estimated 90th percentile not greater than 43 organisms/ 100 mL. The above table shows bacteriological results in relation to program standards.

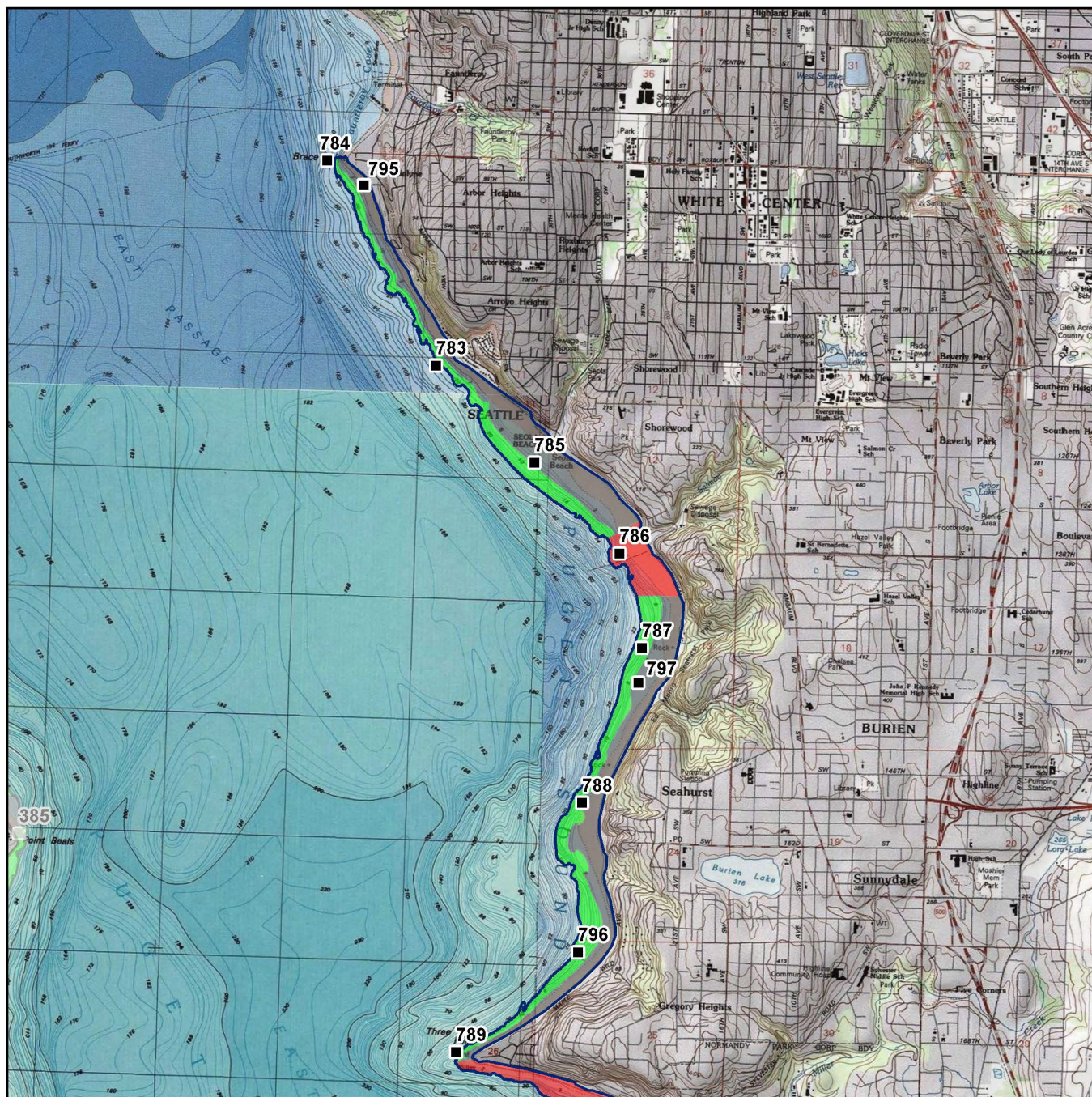
MAP 1. Three Tree Point Growing Area (1 of 2)

Three Tree Point (1 of 2)



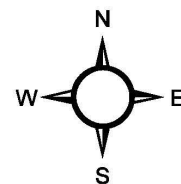
Date Updated: 7/11/2018

0 1 2 Miles



Classification Sampling Stations

- Approved
- Conditional
- Prohibited
- Restricted
- Unclassified



* Some sampling stations are highlighted with grey box for ease of reading.

MAP 2. Three Tree Point Growing Area (2 of 2)

