

Benton County

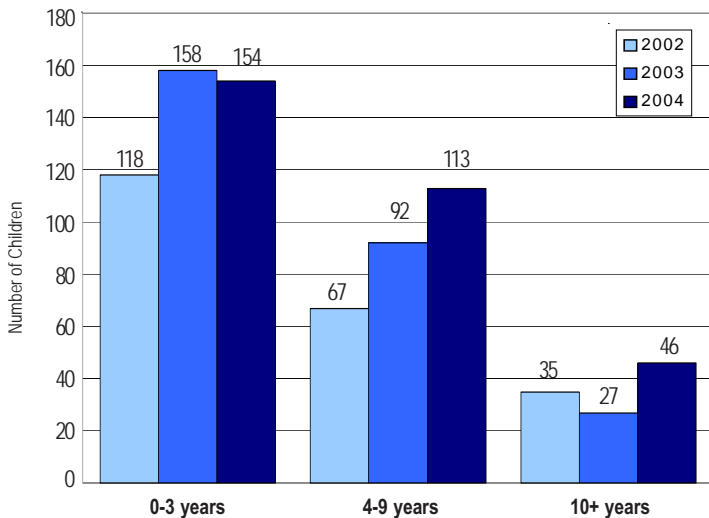
Profile of Children and Youth with Special Health Care Needs

Population of Children 0-19 Years by Age Group and Year

Age Group	1990	2000	2003	2004
0-4 years	9,499	10,779	11,213	11,395
5-9 years	10,115	11,682	11,572	11,702
10-14 years	9,191	12,313	13,007	13,124
15-19 years	8,064	11,683	12,338	12,582
Total	36,869	46,457	48,130	48,802

Source: Intercensal/Postcensal Population Estimates, Office of Financial Management

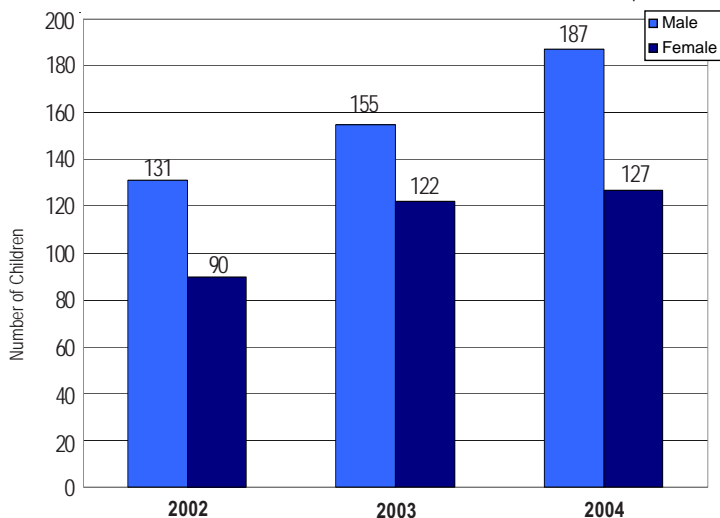
Number* of Children Served by Children with Special Health Care Needs Program by Age Group and Year



*Total number of children served: 2002=221, 2003=277, 2004=314. The number of children served by age and gender may not equal the total number of children served due to non-reporting of gender or age for some cases.

Source: Child Health Intake Forms, Children with Special Health Care Needs Program, Washington State Department of Health

Number* of Children Served by Children with Special Health Care Needs Program by Gender

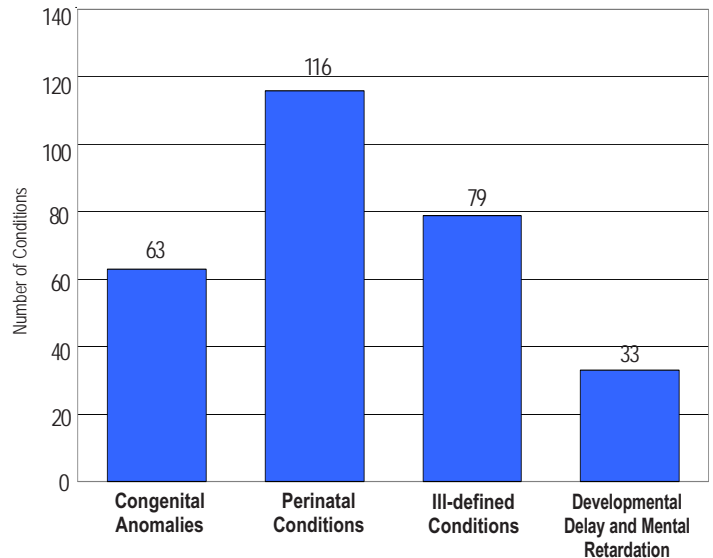


Source: Child Health Intake Forms, Children with Special Health Care Needs Program, Washington State Department of Health

“Children with special health care needs are children who have, or are at increased risk for, chronic physical, developmental, behavioral, or emotional conditions and who also require health and related services of a type or amount beyond that required by children generally.”

(Maternal and Child Health Bureau)

Leading Four Diagnostic Categories* among Children Served by the Children with Special Health Care Needs Program: 2004



*Based upon the number of conditions recorded for each child.

Source: Child Health Intake Forms, Children with Special Health Care Needs Program, Washington State Department of Health

Number of Children in Special Education Services under the Individuals with Disabilities Education Act (IDEA) Part B, as of December 1, 2004

Diagnostic Category	Number
Developmental Delay-Preschool	441
Serious Behavioral Disability	114
Orthopedic Impairment	25
Health Impairment	842
Specific Learning Disability	1,113
Mental Retardation	179
Multiple Disabilities	51
Deaf	6
Hearing Impairment	23
Visually Impaired	12
Deaf-Blindness	*
Communication Disorder	523
Autism	105
Traumatic Brain Injury	13
Total	3,447

*Fewer than five or no cases reported.

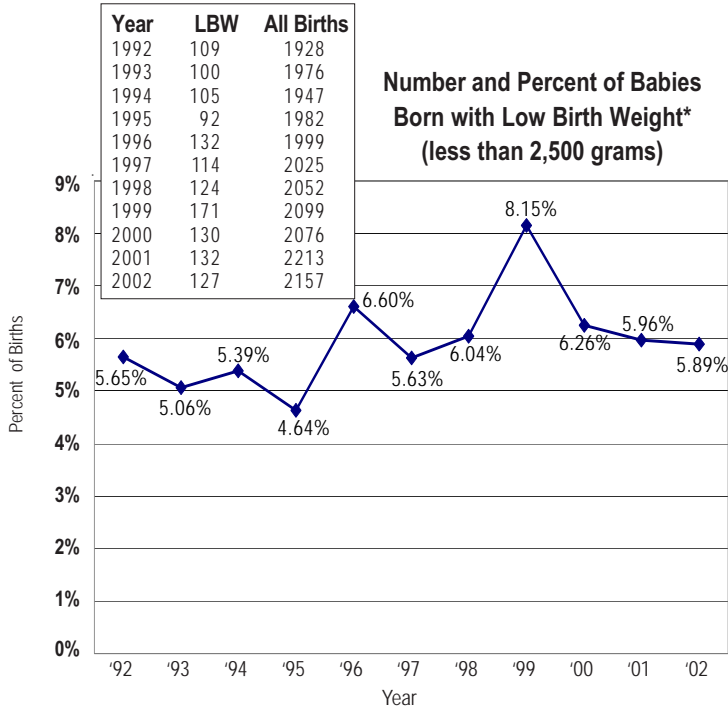
Source: Office of Superintendent of Public Instruction Special Education Operations IDEA Part B Child Count Report

Number of Children Age 0-35 Months with an Individualized Family Service Plan Who Received Early Intervention Services

Oct. 2002-Sept. 2003	384*
Oct. 2003-Sept. 2004	460*

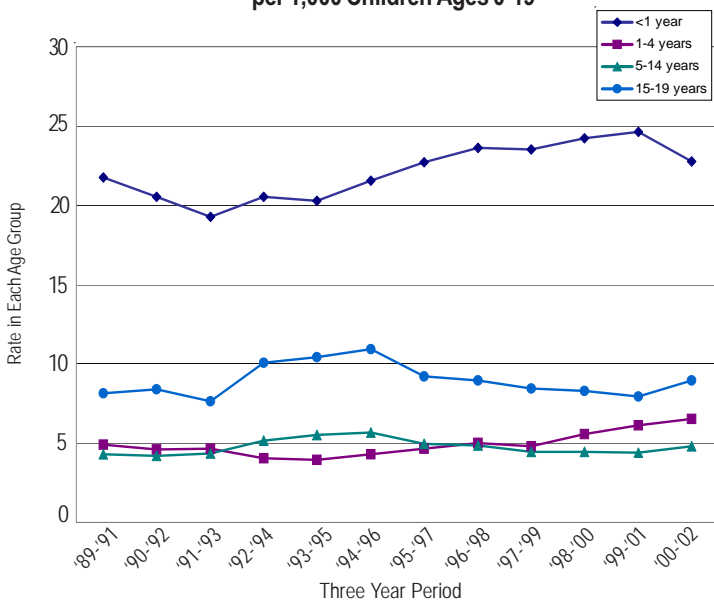
*Combined count from Benton and Franklin counties.

Source: *Infant Toddler Early Intervention Program, Division of Developmental Disabilities, Department of Social and Health Services*



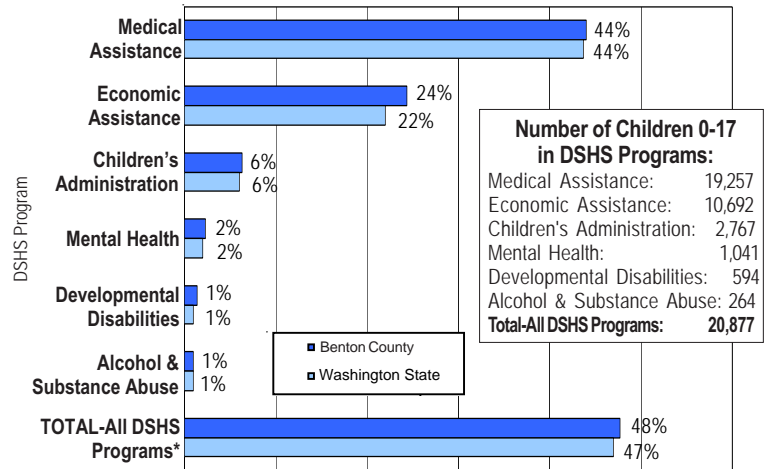
*Percent of births for which the birthweight is known.
Source: *VistaPHw 5.0*

Age-Specific Hospitalization Rate* for Chronic Conditions per 1,000 Children Ages 0-19



*Number of hospitalizations per 1,000 population of children in each age group calculated as three-year rolling averages.
Source: *VistaPHw 5.0*

Percent of Children Age 0-17 in Programs of the Department of Social and Health Services: July 2002 - June 2003

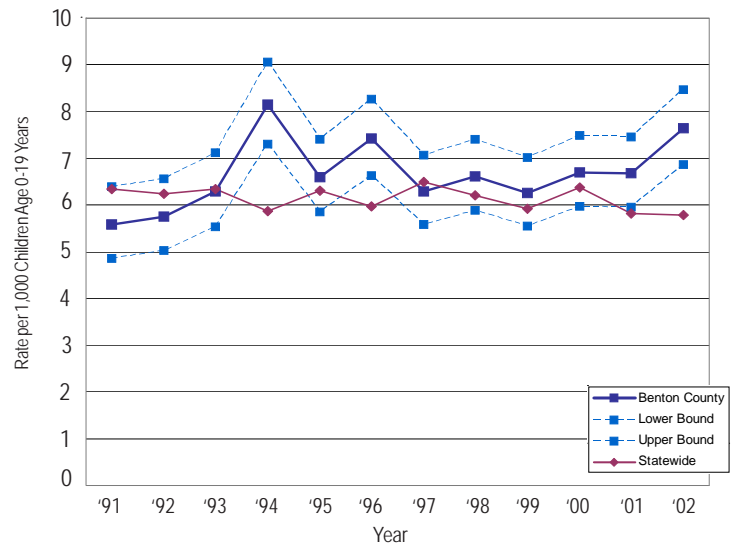


Number of Children 0-17 in DSHS Programs:

Medical Assistance:	19,257
Economic Assistance:	10,692
Children's Administration:	2,767
Mental Health:	1,041
Developmental Disabilities:	594
Alcohol & Substance Abuse:	264
Total-All DSHS Programs:	20,877

* Based upon unduplicated count of children within each service category.
Source: *Client Services Database, Research and Data Analysis Division, Department of Social and Health Services*

Hospitalization Rate* for Chronic Conditions per 1,000 Children Age 0-19 Years: County Rate Compared to State Rate



*Number of hospitalizations per 1,000 population of children 0-19.

Source: *VistaPHw 5.0*

Upper and lower bounds refer to the upper and lower range of the 95% confidence interval within which the actual rate lies.

This county profile is part of the Children and Youth with Special Health Care Needs: Washington State Report. For more information, contact the Children with Special Health Care Needs Program at (360) 236-3571, or <http://www.doh.wa.gov/cfh/mch/cshcnc/home2.htm>

