

Spokane County

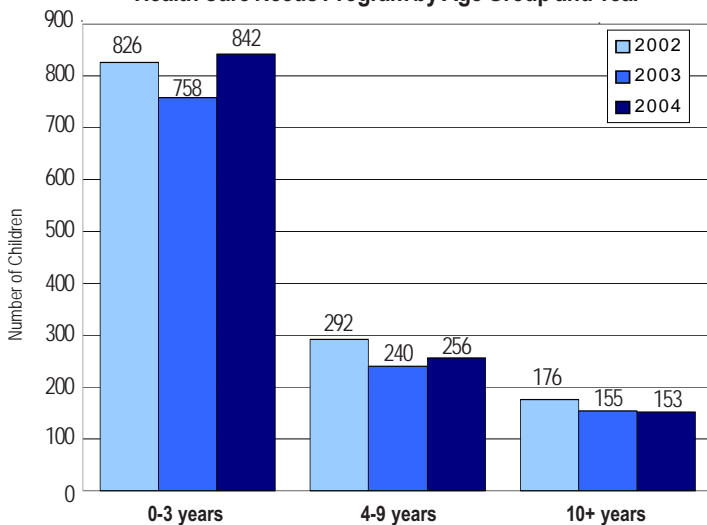
Profile of Children and Youth with Special Health Care Needs

Population of Children 0-19 Years by Age Group and Year

Age Group	1990	2000	2003	2004
0-4 years	27,288	27,478	27,497	27,510
5-9 years	27,879	29,734	28,332	28,209
10-14 years	25,951	31,176	31,680	31,470
15-19 years	26,119	32,890	33,415	33,549
Total	107,237	121,278	120,924	120,738

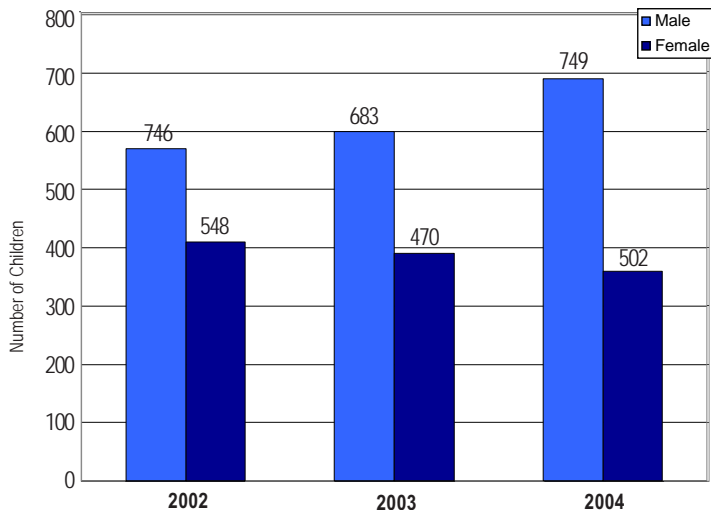
Source: Intercensal/Postcensal Population Estimates, Office of Financial Management

Number* of Children Served by Children with Special Health Care Needs Program by Age Group and Year



*Total number of children served: 2002=1,294, 2003=1,153, 2004=1,251. The number of children served by age and gender may not equal the total number of children served due to non-reporting of gender or age for some cases.
Source: Child Health Intake Forms, Children with Special Health Care Needs Program, Washington State Department of Health

Number* of Children Served by Children with Special Health Care Needs Program by Gender

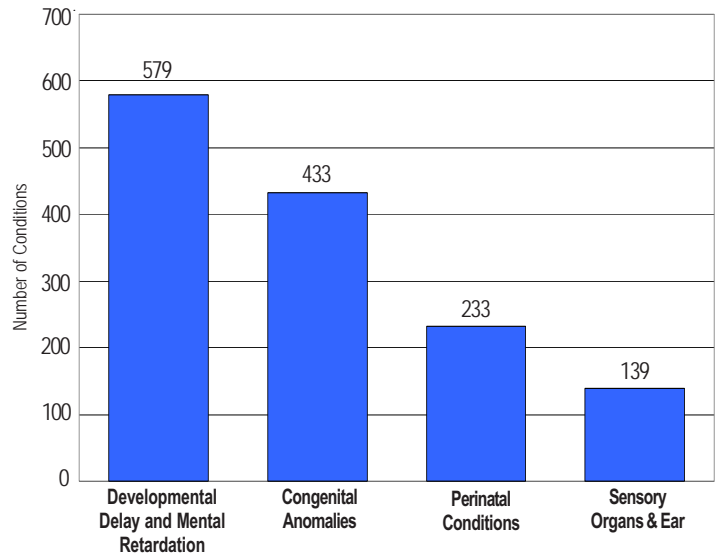


Source: Child Health Intake Forms, Children with Special Health Care Needs Program, Washington State Department of Health

"Children with special health care needs are children who have, or are at increased risk for, chronic physical, developmental, behavioral, or emotional conditions and who also require health and related services of a type or amount beyond that required by children generally."

(Maternal and Child Health Bureau)

Leading Four Diagnostic Categories* among Children Served by the Children with Special Health Care Needs Program: 2004



*Based upon the number of conditions recorded for each child.

Source: Child Health Intake Forms, Children with Special Health Care Needs Program, Washington State Department of Health

Number of Children in Special Education Services under the Individuals with Disabilities Education Act (IDEA) Part B, as of December 1, 2004

Diagnostic Category	Number
Developmental Delay-Preschool	1,072
Serious Behavioral Disability	214
Orthopedic Impairment	85
Health Impairment	1,398
Specific Learning Disability	3,501
Mental Retardation	537
Multiple Disabilities	244
Deaf	25
Hearing Impairment	80
Visually Impaired	27
Deaf-Blindness	*
Communication Disorder	1,651
Autism	266
Traumatic Brain Injury	40
Total	9,140

*Fewer than five or no cases reported.

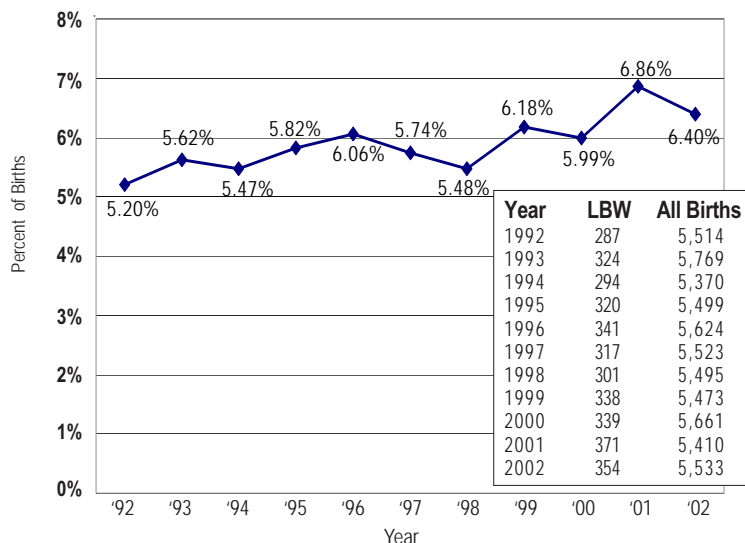
Source: Office of Superintendent of Public Instruction Special Education Operations IDEA Part B Child Count Report

Number of Children Age 0-35 Months with an Individualized Family Service Plan Who Received Early Intervention Services

Oct. 2002-Sept. 2003	490
Oct. 2003-Sept. 2004	498

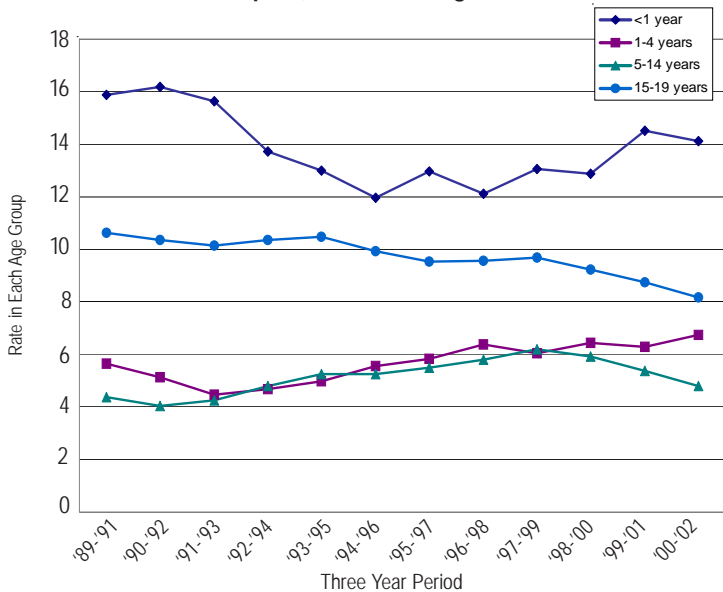
Source: Infant Toddler Early Intervention Program, Division of Developmental Disabilities, Department of Social and Health Services

Number and Percent of Babies Born with Low Birth Weight* (less than 2,500 grams)



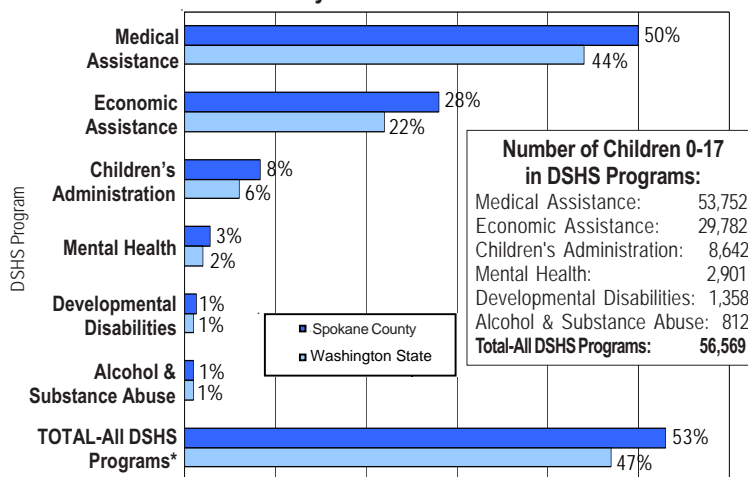
*Percent of births for which the birthweight is known.
Source: VistaPHw 5.0

Age-Specific Hospitalization Rate* for Chronic Conditions per 1,000 Children Ages 0-19



*Number of hospitalizations per 1,000 population of children in each age group calculated as three-year rolling averages.
Source: VistaPHw 5.0

Percent of Children Age 0-17 in Programs of the Department of Social and Health Services: July 2002 - June 2003

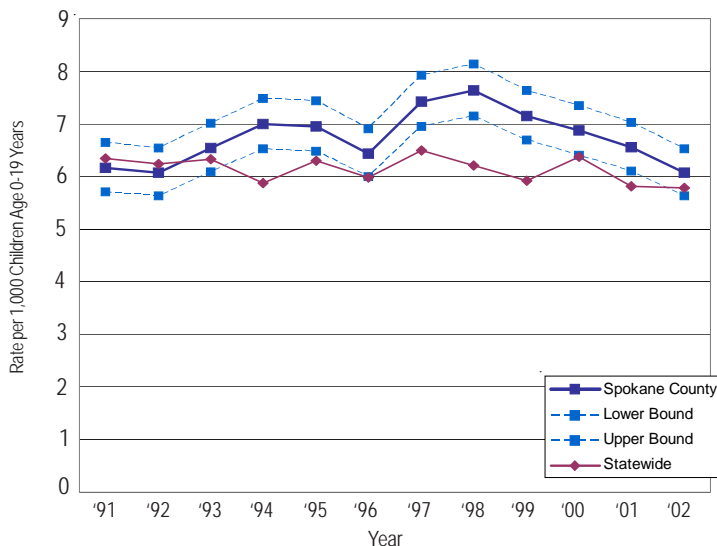


Number of Children 0-17 in DSHS Programs:

Medical Assistance:	53,752
Economic Assistance:	29,782
Children's Administration:	8,642
Mental Health:	2,901
Developmental Disabilities:	1,358
Alcohol & Substance Abuse:	812
Total-All DSHS Programs:	56,569

* Based upon unduplicated count of children within each service category.
Source: Client Services Database, Research and Data Analysis Division, Department of Social and Health Services

Hospitalization Rate* for Chronic Conditions per 1,000 Children Age 0-19 Years: County Rate Compared to State Rate



*Number of hospitalizations per 1,000 population of children 0-19.
Source: VistaPHw 5.0

Upper and lower bounds refer to the upper and lower range of the 95% confidence interval within which the actual rate lies.

This county profile is part of the Children and Youth with Special Health Care Needs: Washington State Report. For more information, contact the Children with Special Health Care Needs Program at (360) 236-3571, or <http://www.doh.wa.gov/cfh/mch/cshcnhome2.htm>

