

Thurston County

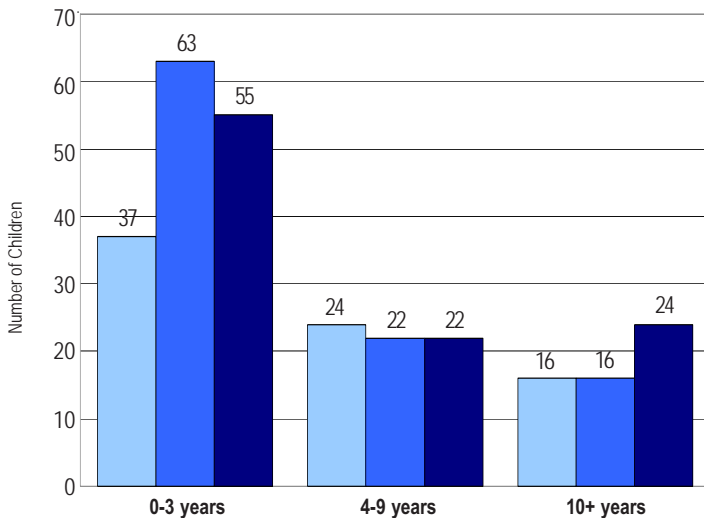
Profile of Children and Youth with Special Health Care Needs

Population of Children 0-19 Years by Age Group and Year

Age Group	1990	2000	2003	2004
0-4 years	11,690	12,827	12,952	13,075
5-9 years	12,882	14,431	13,875	13,940
10-14 years	12,257	15,324	15,714	15,750
15-19 years	11,358	15,904	16,303	16,515
Total	48,187	58,486	58,844	59,280

Source: Intercensal/Postcensal Population Estimates, Office of Financial Management

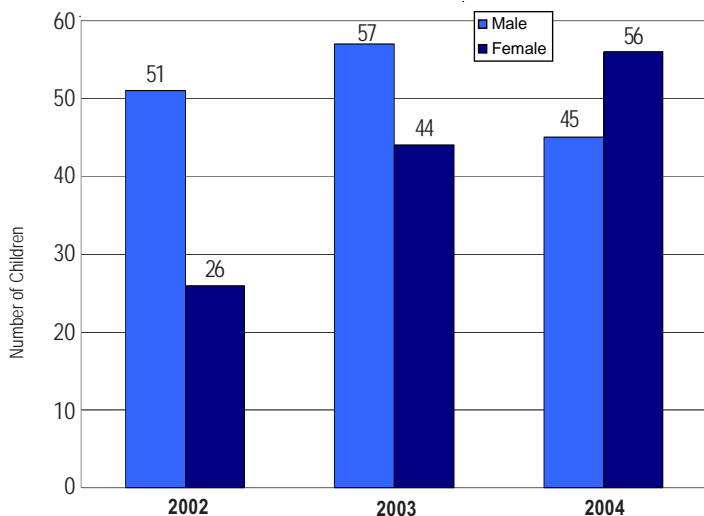
Number* of Children Served by Children with Special Health Care Needs Program by Age Group and Year



*Total number of children served: 2002=77, 2003=101, 2004=101. The number of children served by age and gender may not equal the total number of children served due to non-reporting of gender or age for some cases.

Source: Child Health Intake Forms, Children with Special Health Care Needs Program, Washington State Department of Health

Number* of Children Served by Children with Special Health Care Needs Program by Gender

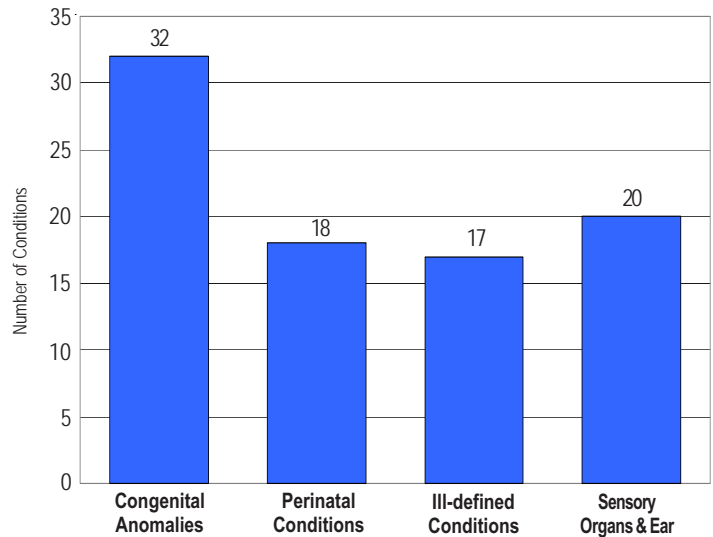


Source: Child Health Intake Forms, Children with Special Health Care Needs Program, Washington State Department of Health

“Children with special health care needs are children who have, or are at increased risk for, chronic physical, developmental, behavioral, or emotional conditions and who also require health and related services of a type or amount beyond that required by children generally.”

(Maternal and Child Health Bureau)

Leading Four Diagnostic Categories* among Children Served by the Children with Special Health Care Needs Program: 2004



*Based upon the number of conditions recorded for each child.

Source: Child Health Intake Forms, Children with Special Health Care Needs Program, Washington State Department of Health

Number of Children in Special Education Services under the Individuals with Disabilities Education Act (IDEA) Part B, as of December 1, 2004

Diagnostic Category	Number
Developmental Delay-Preschool	698
Serious Behavioral Disability	221
Orthopedic Impairment	24
Health Impairment	912
Specific Learning Disability	1,922
Mental Retardation	198
Multiple Disabilities	138
Deaf	73
Hearing Impairment	44
Visually Impaired	47
Deaf-Blindness	6
Communication Disorder	579
Autism	125
Traumatic Brain Injury	6
Total	4,993

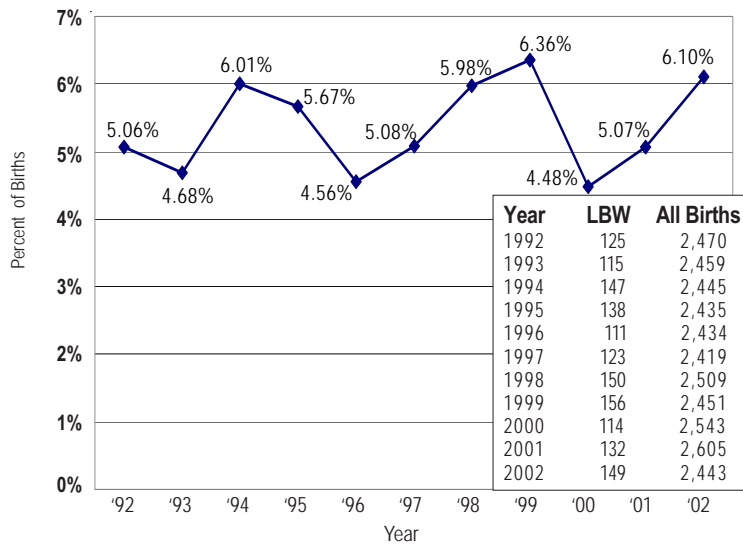
Source: Office of Superintendent of Public Instruction Special Education Operations IDEA Part B Child Count Report

Number of Children Age 0-35 Months with an Individualized Family Service Plan Who Received Early Intervention Services

Oct. 2002-Sept. 2003	199
Oct. 2003-Sept. 2004	223

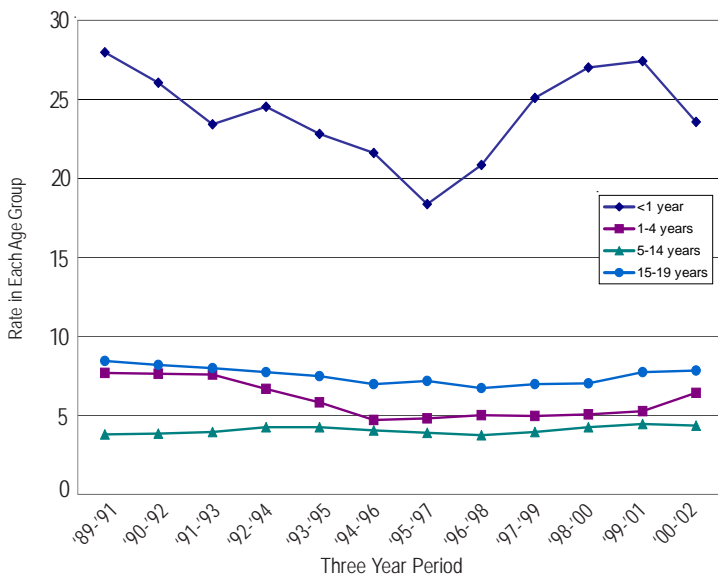
Source: Infant Toddler Early Intervention Program, Division of Developmental Disabilities, Department of Social and Health Services

Number and Percent of Babies Born with Low Birth Weight* (less than 2,500 grams)



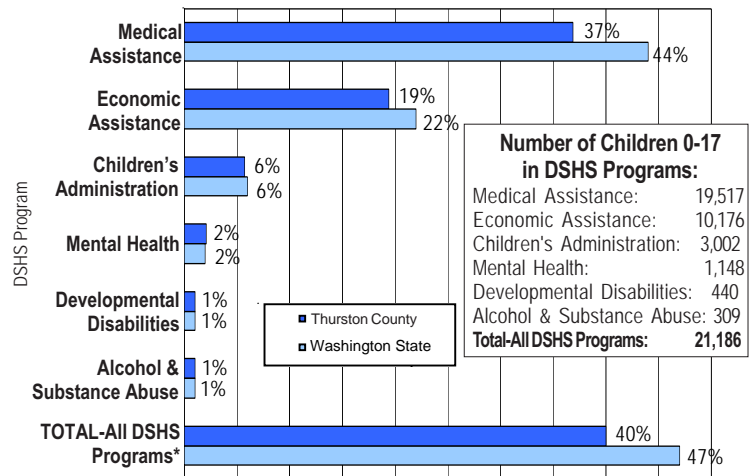
*Percent of births for which the birthweight is known.
Source: VistaPHw 5.0

Age-Specific Hospitalization Rate* for Chronic Conditions per 1,000 Children Ages 0-19



*Number of hospitalizations per 1,000 population of children in each age group calculated as three-year rolling averages.
Source: VistaPHw 5.0

Percent of Children Age 0-17 in Programs of the Department of Social and Health Services: July 2002 - June 2003

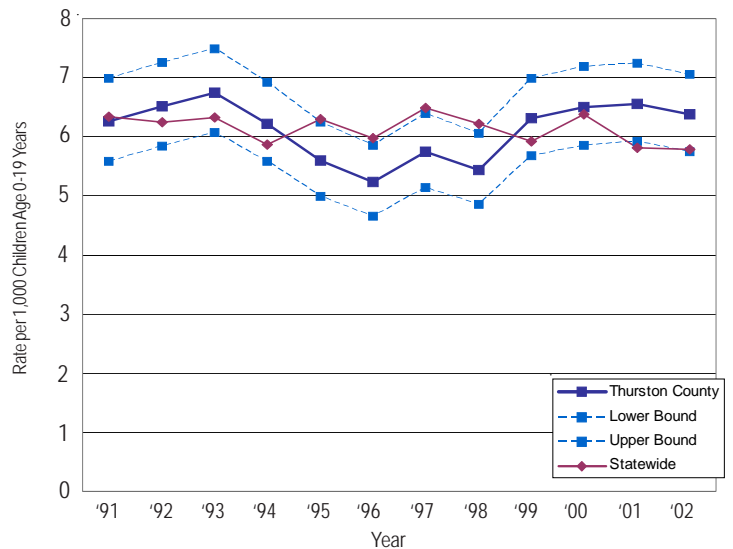


Number of Children 0-17 in DSHS Programs:

Medical Assistance:	19,517
Economic Assistance:	10,176
Children's Administration:	3,002
Mental Health:	1,148
Developmental Disabilities:	440
Alcohol & Substance Abuse:	309
Total-All DSHS Programs:	21,186

* Based upon unduplicated count of children within each service category.
Source: Client Services Database, Research and Data Analysis Division, Department of Social and Health Services

Hospitalization Rate* for Chronic Conditions per 1,000 Children Age 0-19 Years: County Rate Compared to State Rate



*Number of hospitalizations per 1,000 population of children 0-19.

Source: VistaPHw 5.0

Upper and lower bounds refer to the upper and lower range of the 95% confidence interval within which the actual rate lies.

This county profile is part of the Children and Youth with Special Health Care Needs: Washington State Report. For more information, contact the Children with Special Health Care Needs Program at (360) 236-3571, or <http://www.doh.wa.gov/cfh/mch/cshcnhome2.htm>

