

Benton County

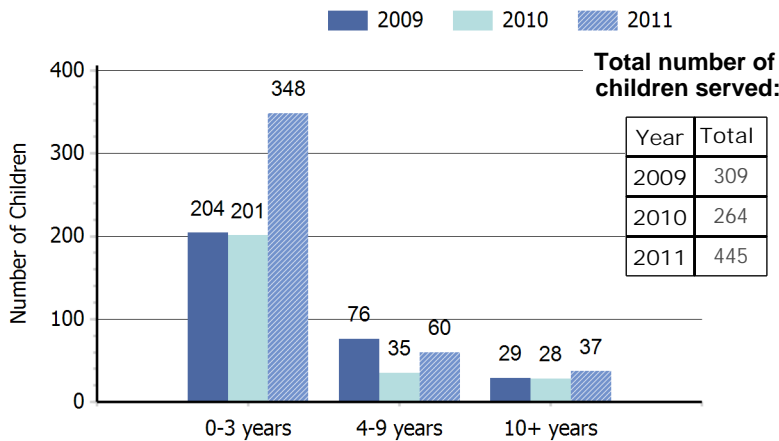
Profile of Children and Youth with Special Health Care Needs

Population of Children 0-19 Years by Age Group and Year

Age Group	1990	2000	2008	2009
0-4 years	9,479	10,779	12,285	12,622
5-9 years	10,075	11,682	12,160	12,377
10-14 years	9,237	12,313	12,785	12,938
15-19 years	8,056	11,683	13,405	13,519
Total	36,847	46,457	50,635	51,456

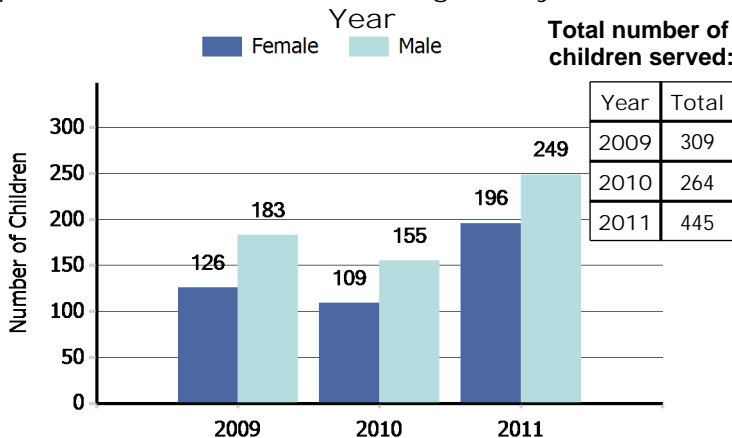
Source: Community Health Assessment Tool (CHAT), 1990-2009
Population Estimates: Population Estimates for Public Health Assessment, Washington State Department of Health and Krupski Consulting, December 2009. Accessed 12/9/11.

Number¹ of Children Served by Children with Special Health Care Needs Program by Age Group and Year



¹The number of children served by age may not equal the total number of children served due to non-reporting of age for some cases.
Source: Child Health Intake Forms, Children with Special Health Care Needs Program, Washington State Department of Health, 5/15/12.

Number² of Children Served by Children with Special Health Care Needs Program by Gender and Year

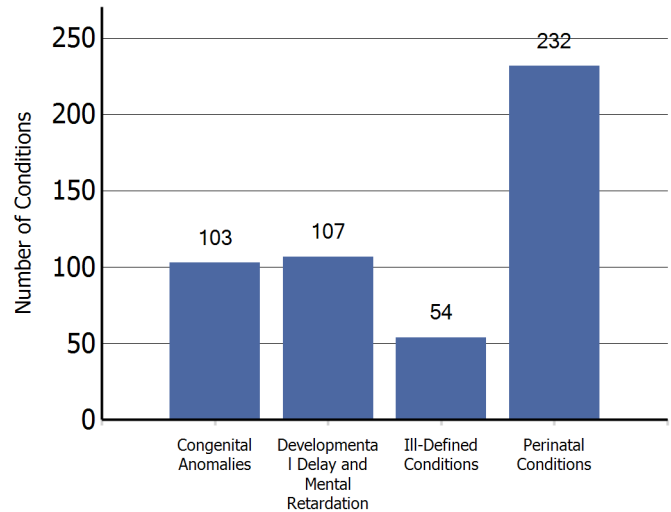


²The number of children served by gender may not equal the total number of children served due to non-reporting of gender for some cases.
Source: Child Health Intake Forms, Children with Special Health Care Needs Program, Washington State Department of Health, 5/15/12.

"Children with special health care needs are children who have, or are at increased risk for, chronic physical, developmental, behavioral, or emotional conditions and who also require health and related services of a type or amount beyond that required by children generally."

(Maternal and Child Health Bureau)

Leading Four Diagnostic Categories³ among Children Served by the Children with Special Health Care Needs Program: 2011



³ Child may have multiple conditions.

Source: Child Health Intake Forms, Children with Special Health Care Needs Program, Washington State Department of Health, 5/15/12.

Number of Children in Special Education Services under the Individuals with Disabilities Education Act (IDEA) Part B, as of December 1, 2010

Diagnostic Category	Number
Specific Learning Disability	1,049
Health Impairment	719
Communication Disorder	655
Developmental Delay - Preschool	492
Autism	270
Intellectual Disabilities	199
Emotional/Behavioral Disability	107
Multiple Disabilities	53
Hearing Impairment	18
Orthopedic Impairment	15
Visual Impairments	15
Traumatic Brain Injury	14
Deafness	6
Deaf - Blindness	<5
TOTAL	3,612

Source: Office of Superintendent of Public Instruction, Special Education Child County and Placement Data, 1/3/12.

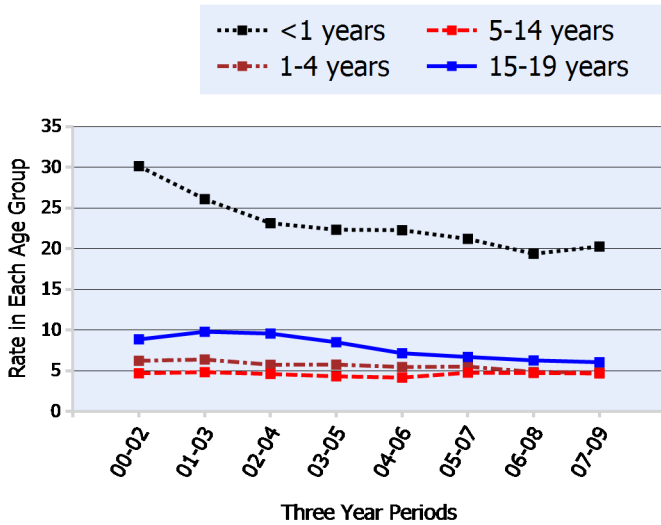
This county profile is part of the Children and Youth with Special Health Care Needs: Washington State Report. For more information, contact the Children with Special Health Care Needs Program at (360) 236-3571.

Number⁴ of Children Age 0-35 Months with an Individualized Family Service Plan Who Received Early Intervention Services

July 2009 - June 2010	264
July 2010 - June 2011	296

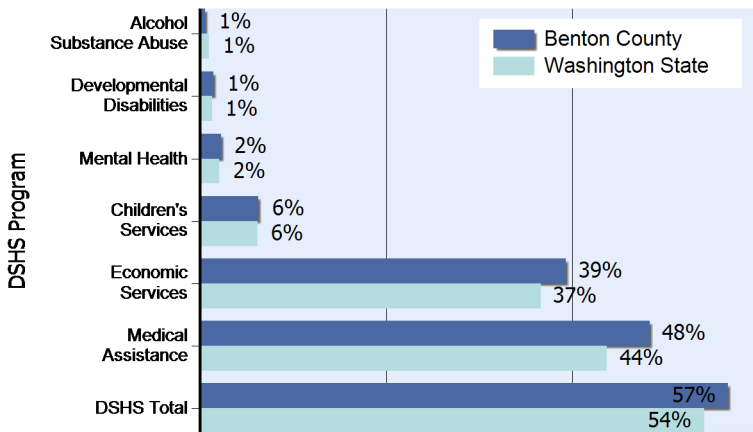
⁴Unduplicated count from Benton and Franklin Counties.
Source: Early Support for Infants and Toddlers (ESIT), Washington State Department of Early Learning, Accessed 11/15/11. Program information and data are available at: <http://www.del.wa.gov/publications/esit/Default.aspx>.

Age-Specific Hospitalization Rate⁶ for Chronic Conditions per 1,000 Children Ages 0-19



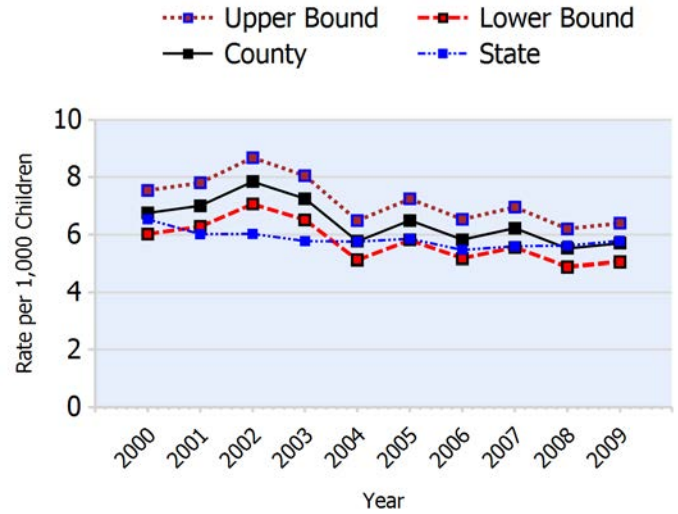
⁶ Number of hospitalizations per 1,000 population of children in each age group calculated as three-year rolling averages.
Source: Community Health Assessment Tool (CHAT), Hospitalization Discharge Data: Comprehensive Hospital Abstract Reporting System (CHARS), Washington State Department of Health, Center for Health Statistics, Accessed 9/21/11.

Percent of Children Age 0-17 in Programs of the Department of Social and Health Services:⁷ June 2007 - July 2008



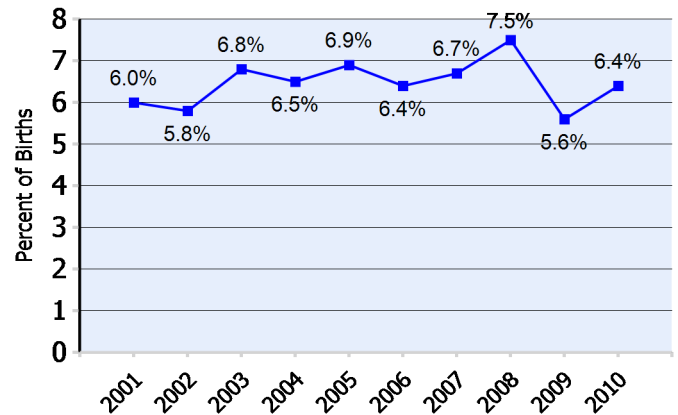
⁷Based upon unduplicated count of children within each service category.
Source: Client Services Database, Research and Data Analysis Division, Department of Social and Health Services, Accessed 11/15/11.
Note: In 2010, the Medical Assistance program moved from the Washington State Department of Social and Health Services to the Health Care Authority. Client data and program descriptions are available at <http://clientdata.rda.dshs.wa.gov/>.

Hospitalization Rate⁸ for Chronic Conditions per 1,000 Children Age 0-19 Years



⁸Number of hospitalizations per 1,000 population of children 0-19.
Source: Community Health Assessment Tool (CHAT), Hospitalization Discharge Data: Comprehensive Hospital Abstract Reporting System (CHARS), Washington State Department of Health, Center for Health Statistics, Accessed 9/21/11.

Number and Percent⁵ of Babies Born with Low Birth Weight (less than 2,500 grams)



⁵ Percent of births for which the birthweight is known.
Source: Washington State Birth Files, Washington State Department of Health, 11/15/11.

Number of Children 0-17 in DSHS Programs:		Year	LBW	All Births
Alcohol Substance Abuse	261	2001	132	2,213
Developmental Disabilities	674	2002	126	2,156
Mental Health	1,047	2003	149	2,186
Children's Services	2,867	2004	142	2,173
Economic Services	18,029	2005	148	2,160
Medical Assistance	22,126	2006	150	2,339
DSHS Total	26,007	2007	164	2,454
		2008	182	2,442
		2009	139	2,485
		2010	162	2,529

