

King County

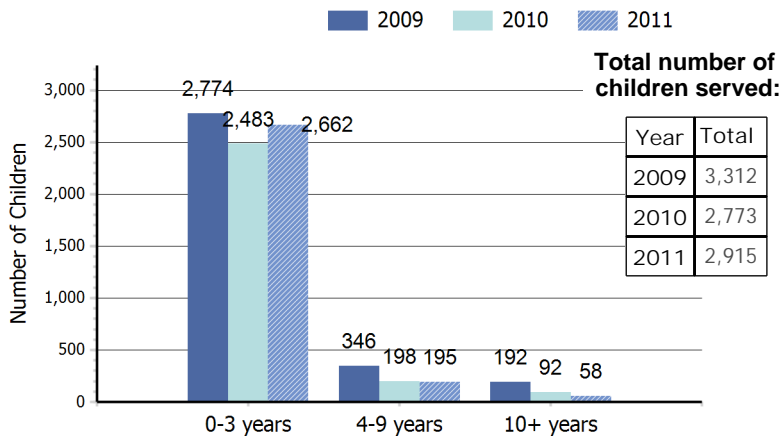
Profile of Children and Youth with Special Health Care Needs

Population of Children 0-19 Years by Age Group and Year

Age Group	1990	2000	2008	2009
0-4 years	106,849	105,321	112,230	114,032
5-9 years	98,529	111,162	108,148	108,893
10-14 years	87,109	109,992	106,728	106,859
15-19 years	88,669	108,262	116,060	115,833
Total	381,156	434,737	443,166	445,617

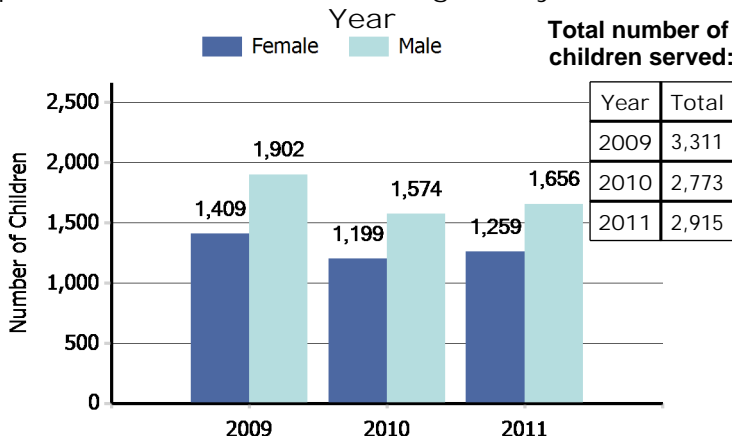
Source: Community Health Assessment Tool (CHAT), 1990-2009
Population Estimates: Population Estimates for Public Health Assessment, Washington State Department of Health and Krupski Consulting, December 2009. Accessed 12/9/11.

Number¹ of Children Served by Children with Special Health Care Needs Program by Age Group and Year



¹The number of children served by age may not equal the total number of children served due to non-reporting of age for some cases.
Source: Child Health Intake Forms, Children with Special Health Care Needs Program, Washington State Department of Health, 5/15/12.

Number² of Children Served by Children with Special Health Care Needs Program by Gender and Year

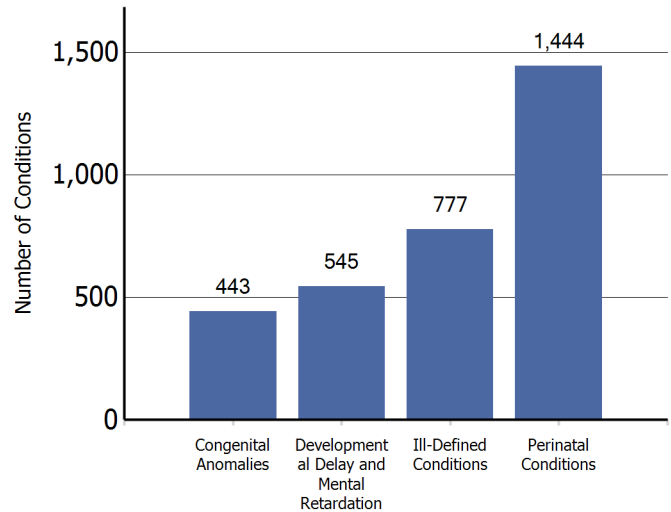


²The number of children served by gender may not equal the total number of children served due to non-reporting of gender for some cases.
Source: Child Health Intake Forms, Children with Special Health Care Needs Program, Washington State Department of Health, 5/15/12.

"Children with special health care needs are children who have, or are at increased risk for, chronic physical, developmental, behavioral, or emotional conditions and who also require health and related services of a type or amount beyond that required by children generally."

(Maternal and Child Health Bureau)

Leading Four Diagnostic Categories³ among Children Served by the Children with Special Health Care Needs Program: 2011



³ Child may have multiple conditions.

Source: Child Health Intake Forms, Children with Special Health Care Needs Program, Washington State Department of Health, 5/15/12.

Number of Children in Special Education Services under the Individuals with Disabilities Education Act (IDEA) Part B, as of December 1, 2010

Diagnostic Category	Number
Specific Learning Disability	11,102
Health Impairment	6,454
Communication Disorder	3,739
Developmental Delay - Preschool	3,686
Autism	2,623
Emotional/Behavioral Disability	1,195
Intellectual Disabilities	834
Multiple Disabilities	494
Hearing Impairment	206
Orthopedic Impairment	93
Traumatic Brain Injury	78
Visual Impairments	76
Deafness	61
Deaf - Blindness	<5
TOTAL	30,641

Source: Office of Superintendent of Public Instruction, Special Education Child County and Placement Data, 1/3/12.

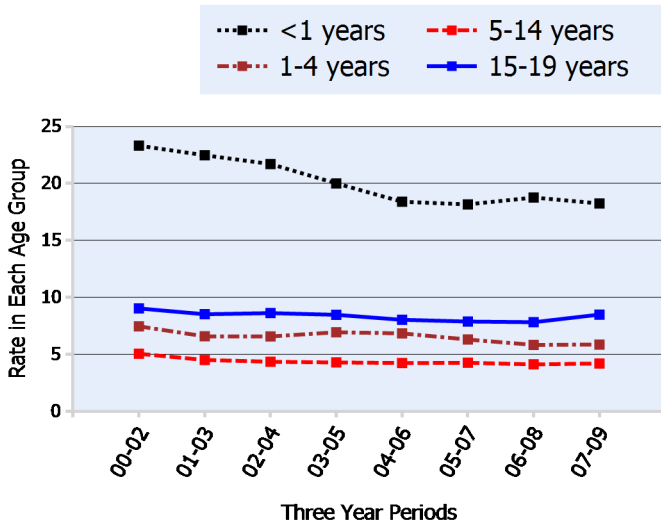
This county profile is part of the Children and Youth with Special Health Care Needs: Washington State Report. For more information, contact the Children with Special Health Care Needs Program at (360) 236-3571.

Number⁴ of Children Age 0-35 Months with an Individualized Family Service Plan Who Received Early Intervention Services

July 2009 - June 2010	1,339
July 2010 - June 2011	1,454

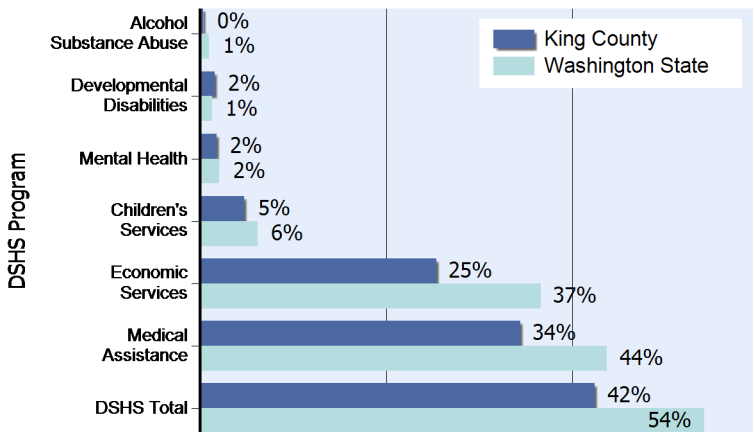
⁴Unduplicated count from King County.
Source: Early Support for Infants and Toddlers (ESIT), Washington State Department of Early Learning, Accessed 11/15/11. Program information and data are available at: <http://www.del.wa.gov/publications/esit/Default.aspx>.

Age-Specific Hospitalization Rate⁶ for Chronic Conditions per 1,000 Children Ages 0-19



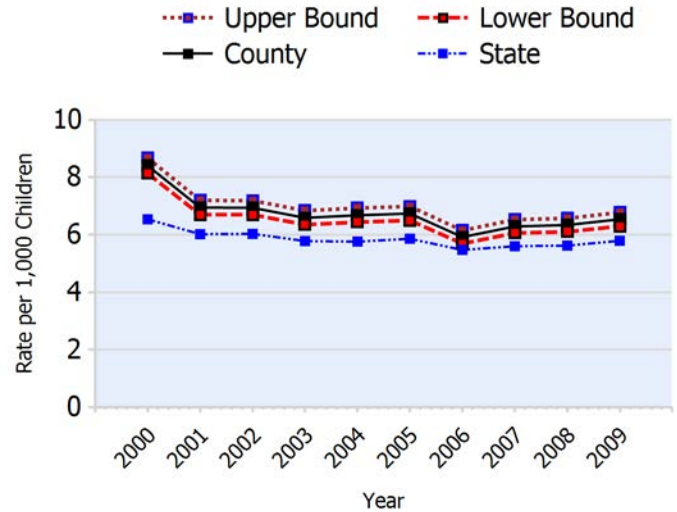
⁶ Number of hospitalizations per 1,000 population of children in each age group calculated as three-year rolling averages.
Source: Community Health Assessment Tool (CHAT), Hospitalization Discharge Data: Comprehensive Hospital Abstract Reporting System (CHARS), Washington State Department of Health, Center for Health Statistics, Accessed 9/21/11.

Percent of Children Age 0-17 in Programs of the Department of Social and Health Services:⁷ June 2007 - July 2008



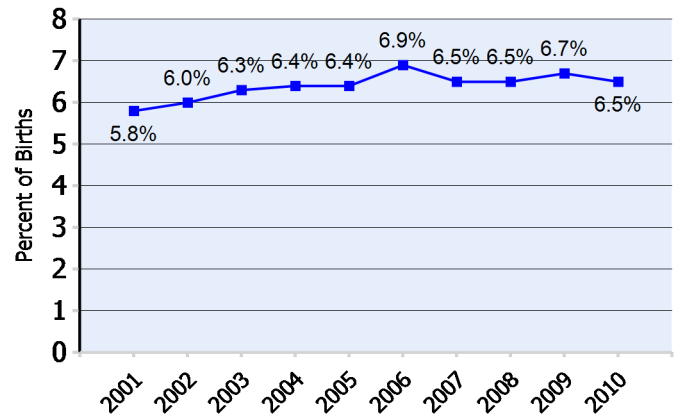
⁷Based upon unduplicated count of children within each service category.
Source: Client Services Database, Research and Data Analysis Division, Department of Social and Health Services, Accessed 11/15/11.
Note: In 2010, the Medical Assistance program moved from the Washington State Department of Social and Health Services to the Health Care Authority. Client data and program descriptions are available at <http://clientdata.rda.dshs.wa.gov/>.

Hospitalization Rate⁸ for Chronic Conditions per 1,000 Children Age 0-19 Years



⁸Number of hospitalizations per 1,000 population of children 0-19.
Source: Community Health Assessment Tool (CHAT), Hospitalization Discharge Data: Comprehensive Hospital Abstract Reporting System (CHARS), Washington State Department of Health, Center for Health Statistics, Accessed 9/21/11.

Number and Percent⁵ of Babies Born with Low Birth Weight (less than 2,500 grams)



⁵ Percent of births for which the birthweight is known.
Source: Washington State Birth Files, Washington State Department of Health, 11/15/11.

Number of Children 0-17 in DSHS Programs:		Year LBW All Births	
Alcohol Substance Abuse	1,670	2001	1,255 21,627
Developmental Disabilities	6,318	2002	1,309 21,655
Mental Health	7,170	2003	1,396 22,268
Children's Services	18,790	2004	1,453 22,753
Economic Services	100,282	2005	1,453 22,585
Medical Assistance	135,729	2006	1,680 24,175
DSHS Total	167,485	2007	1,627 24,855
		2008	1,634 25,171
		2009	1,668 24,995
		2010	1,597 24,464

