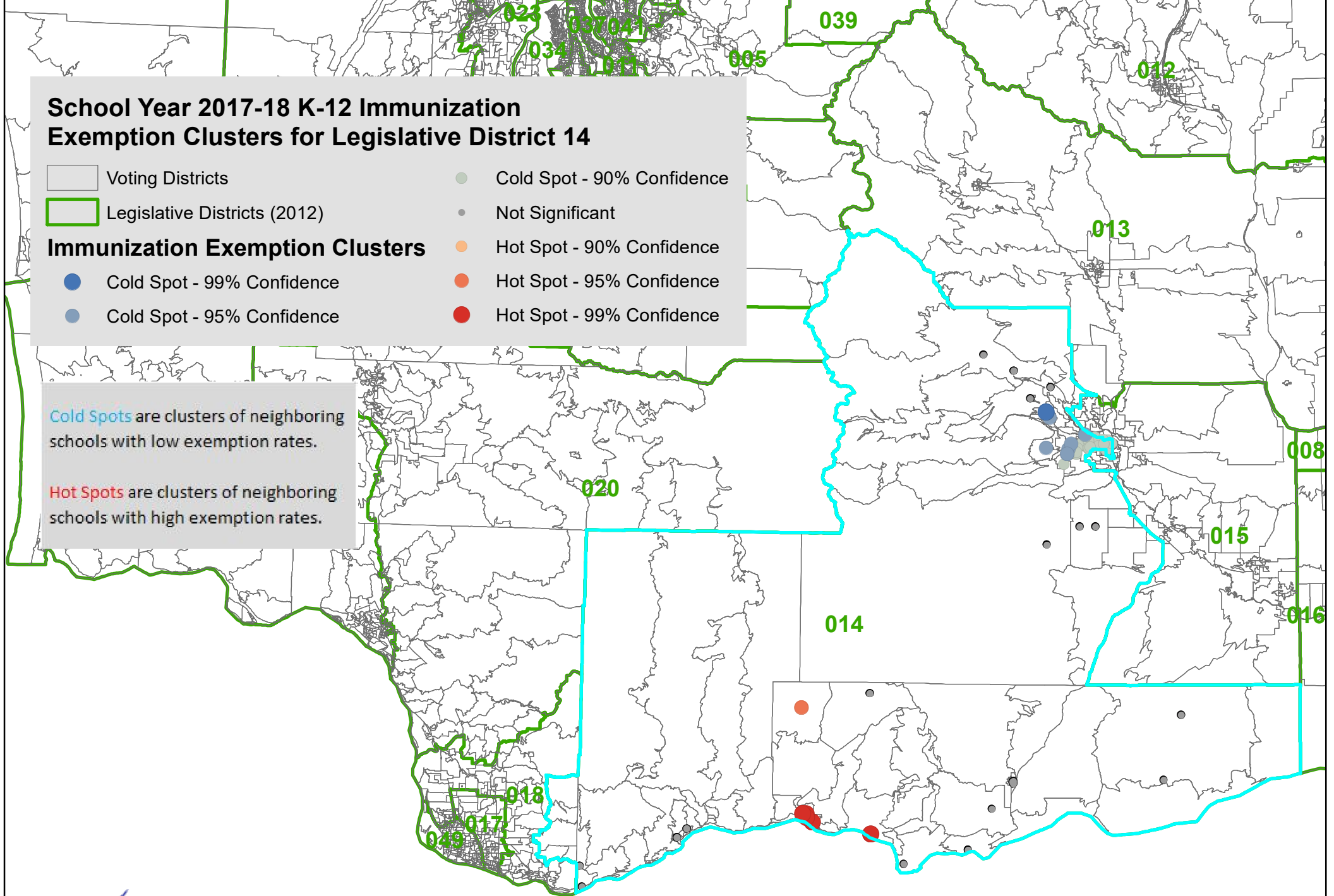


# School Year 2017-18 K-12 Immunization Exemption Clusters for Legislative District 14

- Voting Districts
- Legislative Districts (2012)
- Cold Spot - 99% Confidence
- Cold Spot - 95% Confidence
- Not Significant
- Hot Spot - 90% Confidence
- Hot Spot - 95% Confidence
- Hot Spot - 99% Confidence

**Cold Spots** are clusters of neighboring schools with low exemption rates.

**Hot Spots** are clusters of neighboring schools with high exemption rates.



Source: Office of Immunization and Child Profile  
 SY 2017-18 School Data. Created April, 2019

