

Performance Measurement & Foundational Public Health Services

Learning Congress 2012

Public Health Performance Management Centers for Excellence

November 1, 2012

Public Health Improvement Partnership (PHIP)

4

PARTNERSHIP

Mary Selecky, Secretary of Health
Regina Delahunt (Whatcom)

- State Board of Health
- Department of Health
- WA State Association of Local PH Officials
- Local Health Agencies
- Local Boards of Health
- Tribal Nations
- American Indian Health Commission
- DHHS Region X

EX OFFICIO MEMBERS

- WA Health Foundation
- UW/NW Center for PH Practice
- WA State PH Association
- Individuals/organizations with expertise in IT, communications, workforce development, finance, legislative policy

ACTIVITIES & SERVICES

Barry Kling (Chelan-Douglas)
Gregg Grunenfelder (DOH)

INDICATORS

Lyndia Wilson (Spokane)
Jennifer Tebaldi (DOH)

STANDARDS

Torney Smith (Spokane)
Susan Ramsey (DOH)

AGENDA FOR CHANGE

John Wiesman (Clark)
Gregg Grunenfelder (DOH)

Communicable Disease & Other Health Threats

Scott Lindquist (Kitsap)
Jennifer Tebaldi (DOH)

Healthy Communities & Environments

Dennis Worsham (PHSKC)
Allene Mares (DOH)

Partnering with the Healthcare System

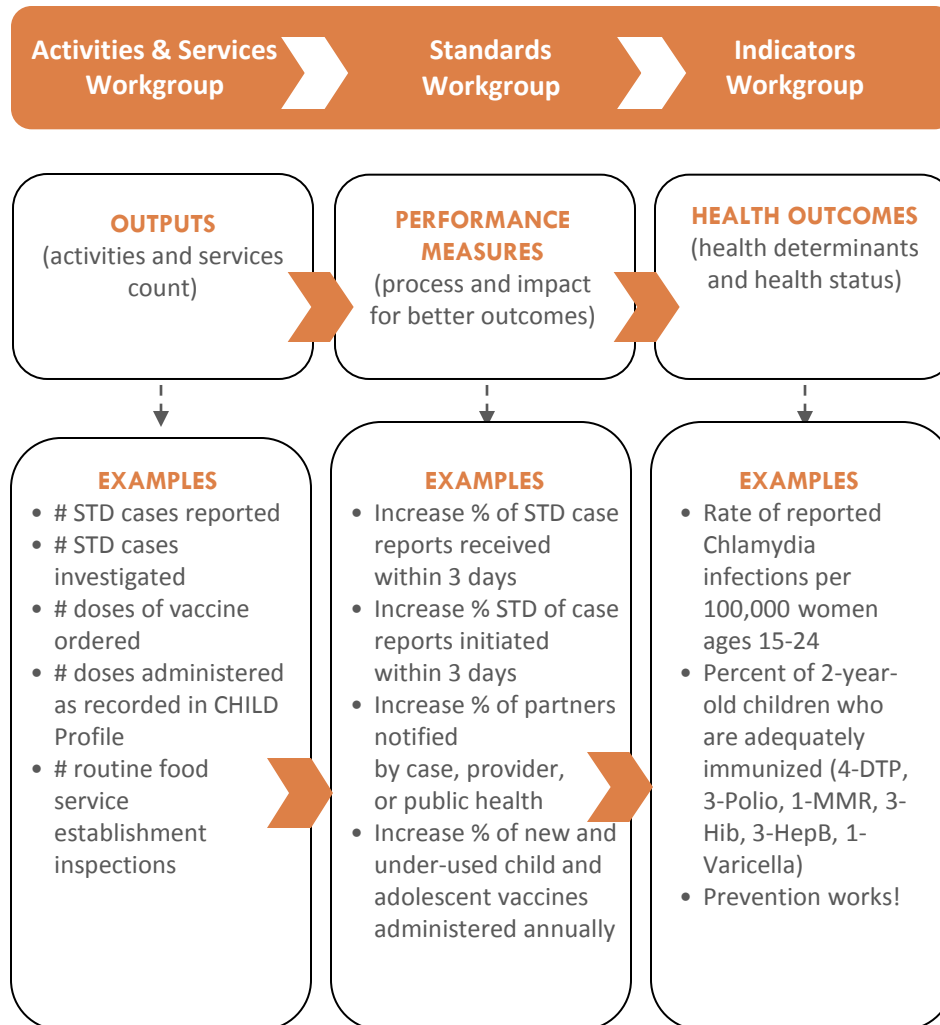
Joan Brewster (Grays Harbor)
Karen Jensen (DOH)

Minimum Package of Public Health Services

Barry Kling (Chelan-Douglas)
Gregg Grunenfelder (DOH)

PHIP Measurement Framework

10



Agenda for Change

9

Agenda for Change Action Plan

SUMMARY

2012

TABLE OF CONTENTS

A Message from the Public
Health Improvement
Partnership

The Agenda for Change
Action Plan

Foundational Public
Health Services

Strategic Priorities

Partners are Essential

Next Steps: Implementing
the Agenda for Change



Agenda for Change Action Plan Summary

10

Foundational Public Health Services

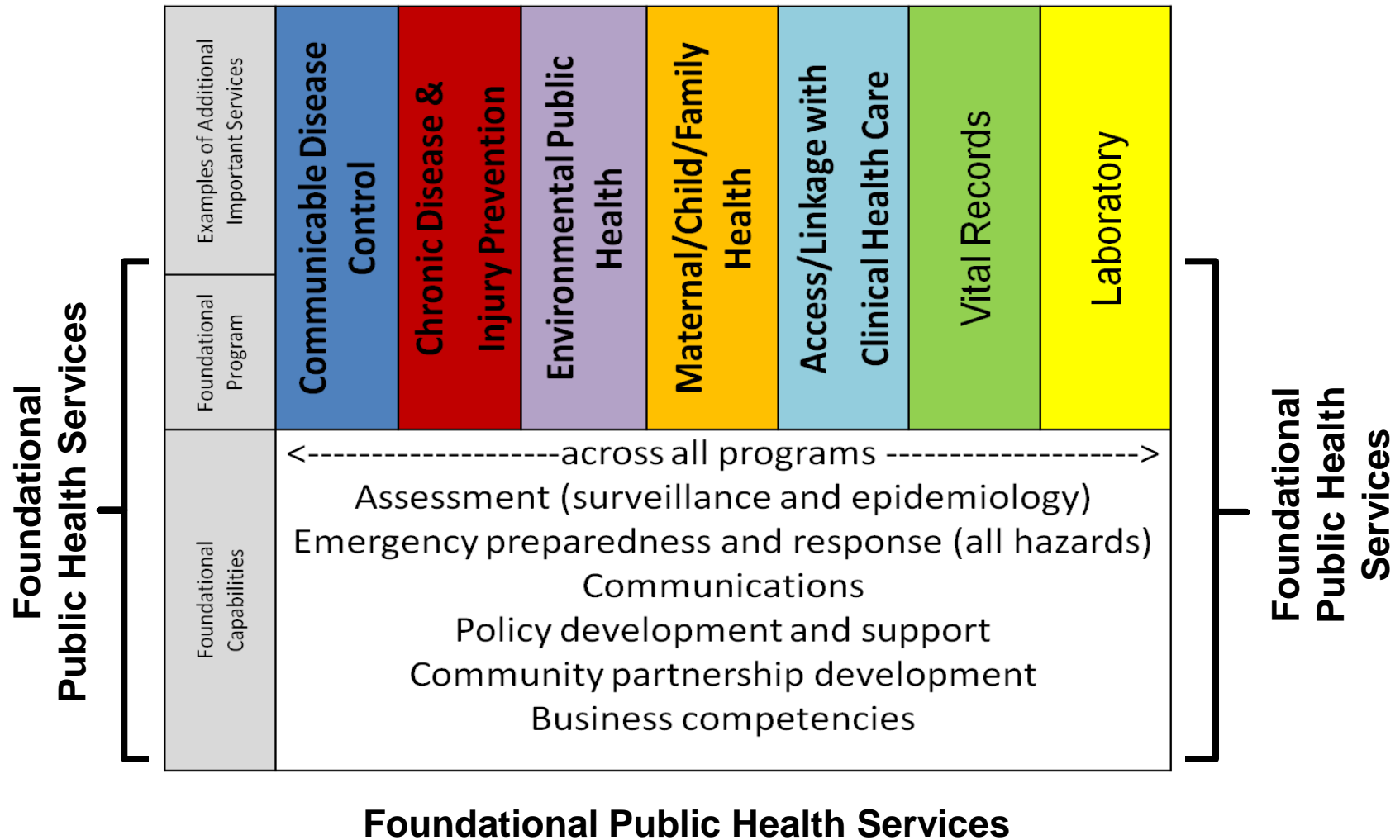
- Foundational capabilities
- Foundational programs

Strategic Priorities

- Preventing Communicable Disease and Other Health Threats
- Fostering Healthy Communities and Environments
- Public Health Partnering with the Health Care System

Foundational Public Health Services (PHS)

11



Funding for Foundational PHS - \$116M/yr*

10

Local Contributions - \$79million / yr

State Contributions - \$37million / yr

- Local Capacity Development Funds (LCDF) - \$8M
- Motor Vehicle Excise Tax (MVET) Replacement Funds - \$24M
- Blue Ribbon / 5930 Funds - \$5M

What does it Buy?

* 2011 BARS Data

Assessment (LCDF Performance Measures)

18

| | LHJs with Current | | |
|------------|---|--|----------------------------------|
| | CHA (Community Health Assessment) | CHIP (Community Health Improvement Plan) | SP (Agency Strategic Plan) |
| Completed | 31% | 9% | 31% |
| In process | 38% | 34% | 23% |
| None | 31% | 57% | 46% |

Communicable Disease (CD) Control

(Blue Ribbon / 5930 Performance Measures)

10

Stopping communicable diseases before they spread

Improve uptake of childhood immunizations

- Number of doses of vaccine ordered by each LHJ
- Number of doses administered as recorded in CHLD Profile

More timely and complete CD investigations

- % NC* cases reported to the LHJ on time
- % NC* cases where investigation was initiated by LHJ on time
- % NC* cases with a completed investigation

* NC = notifiable condition

How else could public health's performance on the Foundational PHS be demonstrated/measured?

18

- Chronic disease and injury prevention
- Environmental public health
- Maternal, child, family health
- Access / linkage with clinical health care
- Vital records
- Laboratory
- Emergency preparedness
- Communications
- Policy, partnership, business competencies