



# Influenza Update

Elyse Bevers, MPH

Vivian Hawkins, MS PhD

Communicable Disease Epidemiology

Washington State Department of Health

**PUBLIC HEALTH**  
ALWAYS WORKING FOR A SAFER AND  
HEALTHIER COMMUNITY



# Influenza Report

- Released monthly in summer
- Released weekly Oct to May
- Many local health jurisdictions also produce reports

## Washington State Influenza Update

Week 01: December 31, 2017-January 06, 2018

Washington State Department of Health, Communicable Disease Epidemiology

Please note all data are preliminary and may change as data are updated

### State Summary: Flu activity is increasing

- Forty six lab-confirmed influenza deaths have been reported for the 2017-2018 season to date.
- Forty one influenza-like illness outbreaks in long term care facilities have been reported for the 2017-2018 season to date.
- During week 01, 5.5 percent of visits among Influenza-like illness Network participants were for influenza-like illness, above the baseline of 1.1 percent.
- During week 01, 27.1 percent of specimens tested by WHO/NREVSS collaborating laboratories in Washington were positive for influenza.
- Influenza A and influenza B were reported during week 01.

### Influenza Laboratory Surveillance Data

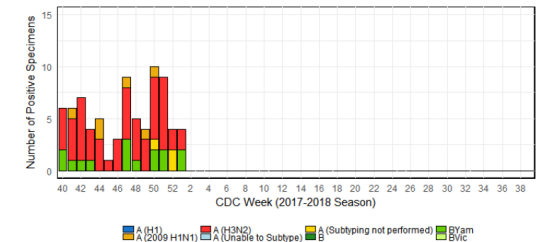
Laboratory Data: World Health Organization (WHO) & National Respiratory and Enteric Virus Surveillance System (NREVSS) Data Reported to CDC

For the 2017-2018 influenza season, CDC has generated separate graphs of data reported to CDC by public health laboratories (Figure 1) and commercial laboratories (Figure 2). Table 1 combines the data from the public health and commercial laboratories.

Table 1: WA Influenza Specimens Reported to CDC, Public Health Laboratories and Commercial Laboratories

| Week | A (H1) | A (2009 H1N1) | A (H3N2) | A (Unable to Subtype) | A (Subtyping not performed) | B   | BYam | Bvic | Total Tested | % Flu Positive |
|------|--------|---------------|----------|-----------------------|-----------------------------|-----|------|------|--------------|----------------|
| 50   | 0      | 4             | 13       | 0                     | 89                          | 26  | 2    | 0    | 1,013        | 13.2           |
| 51   | 0      | 2             | 11       | 0                     | 195                         | 71  | 2    | 0    | 1,290        | 21.8           |
| 52   | 0      | 6             | 14       | 0                     | 290                         | 73  | 0    | 0    | 1,635        | 23.4           |
| 01   | 0      | 13            | 20       | 0                     | 289                         | 109 | 2    | 0    | 1,598        | 27.1           |

Figure 1: Influenza Positive Tests Reported to CDC, WA Public Health Laboratories



[www.doh.wa.gov/DataandStatisticalReports/DiseasesandChronicConditions/CommunicableDiseaseSurveillanceData/InfluenzaSurveillanceData](http://www.doh.wa.gov/DataandStatisticalReports/DiseasesandChronicConditions/CommunicableDiseaseSurveillanceData/InfluenzaSurveillanceData)

# What is Reportable in WA

- Lab-confirmed influenza deaths
- Outbreaks of influenza-like illness in long term care facilities
- Suspected novel influenza cases

# What is Reportable in WA

- Lab-confirmed influenza deaths
- Outbreaks of influenza-like illness in long term care facilities
- Suspected novel influenza cases

Rely heavily on voluntary reporting to  
understand flu activity

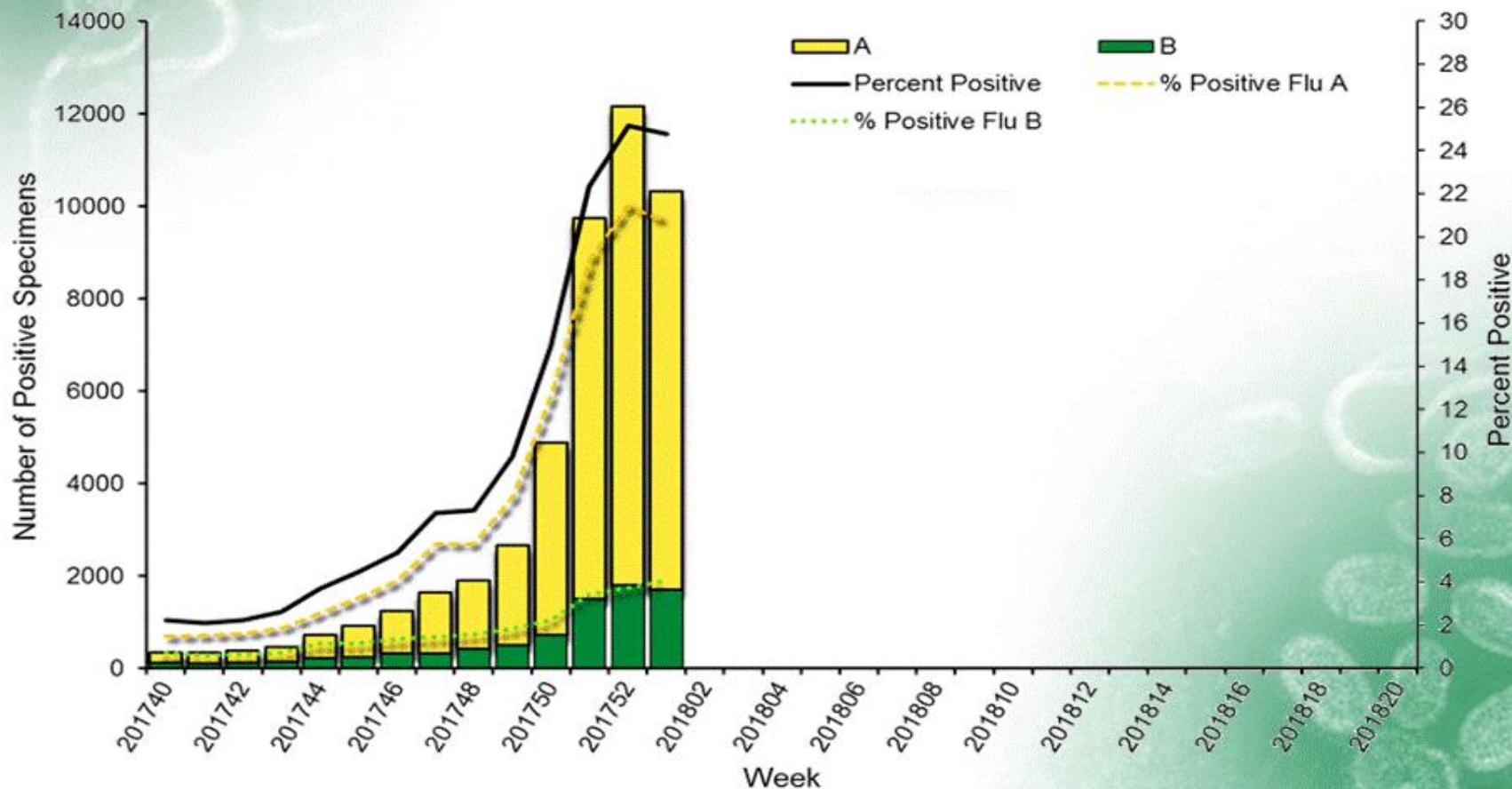
# National Influenza Activity 2017-2018

# FLUVIEW



A Weekly Influenza Surveillance Report Prepared by the Influenza Division

## Influenza Positive Tests Reported to CDC by U.S. Clinical Laboratories, National Summary, 2017-2018 Season



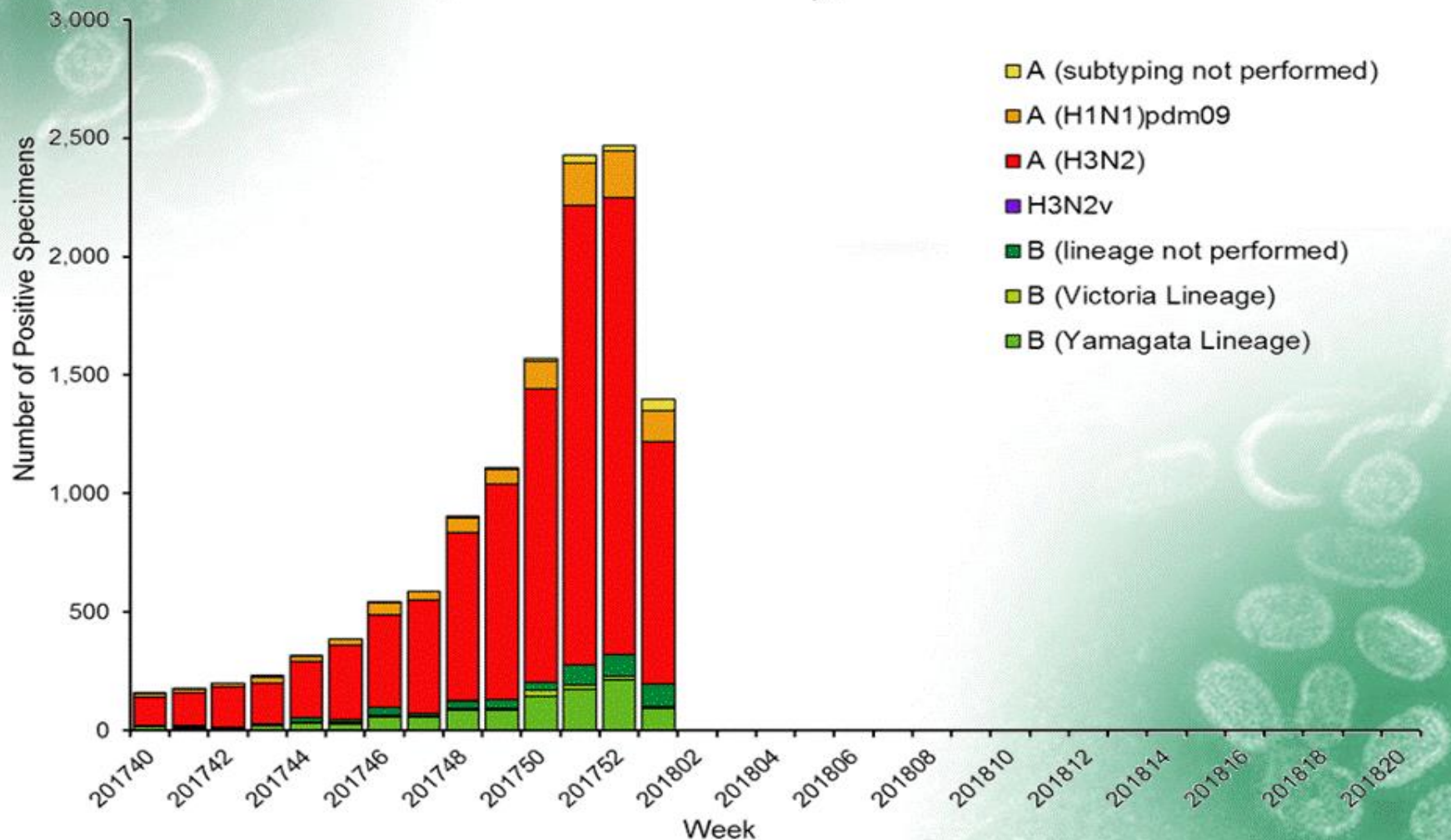


# FLUVIEW

A Weekly Influenza Surveillance Report Prepared by the Influenza Division



## Influenza Positive Tests Reported to CDC by U.S. Public Health Laboratories, National Summary, 2017-2018 Season

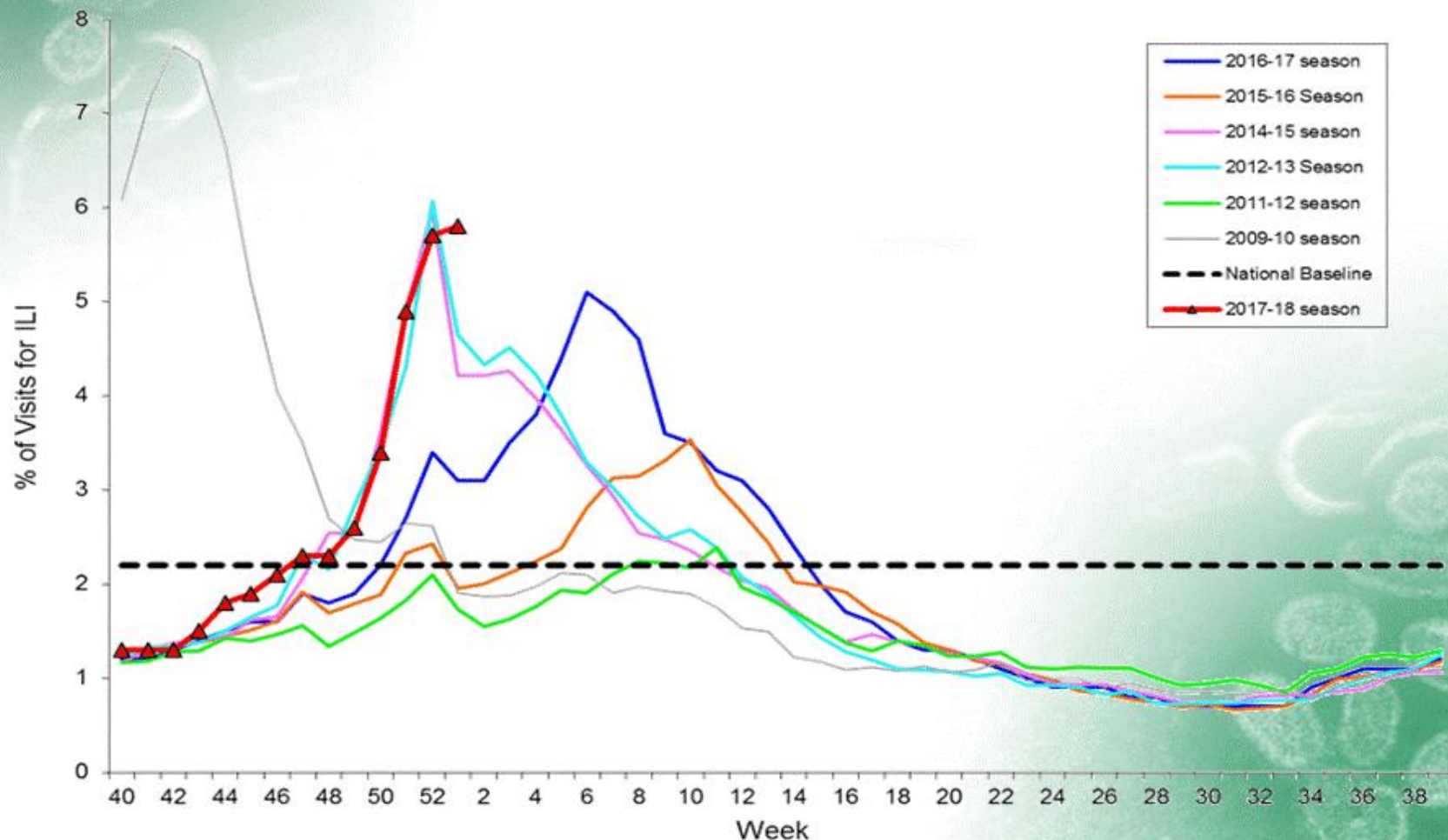


# FLUVIEW



## A Weekly Influenza Surveillance Report Prepared by the Influenza Division

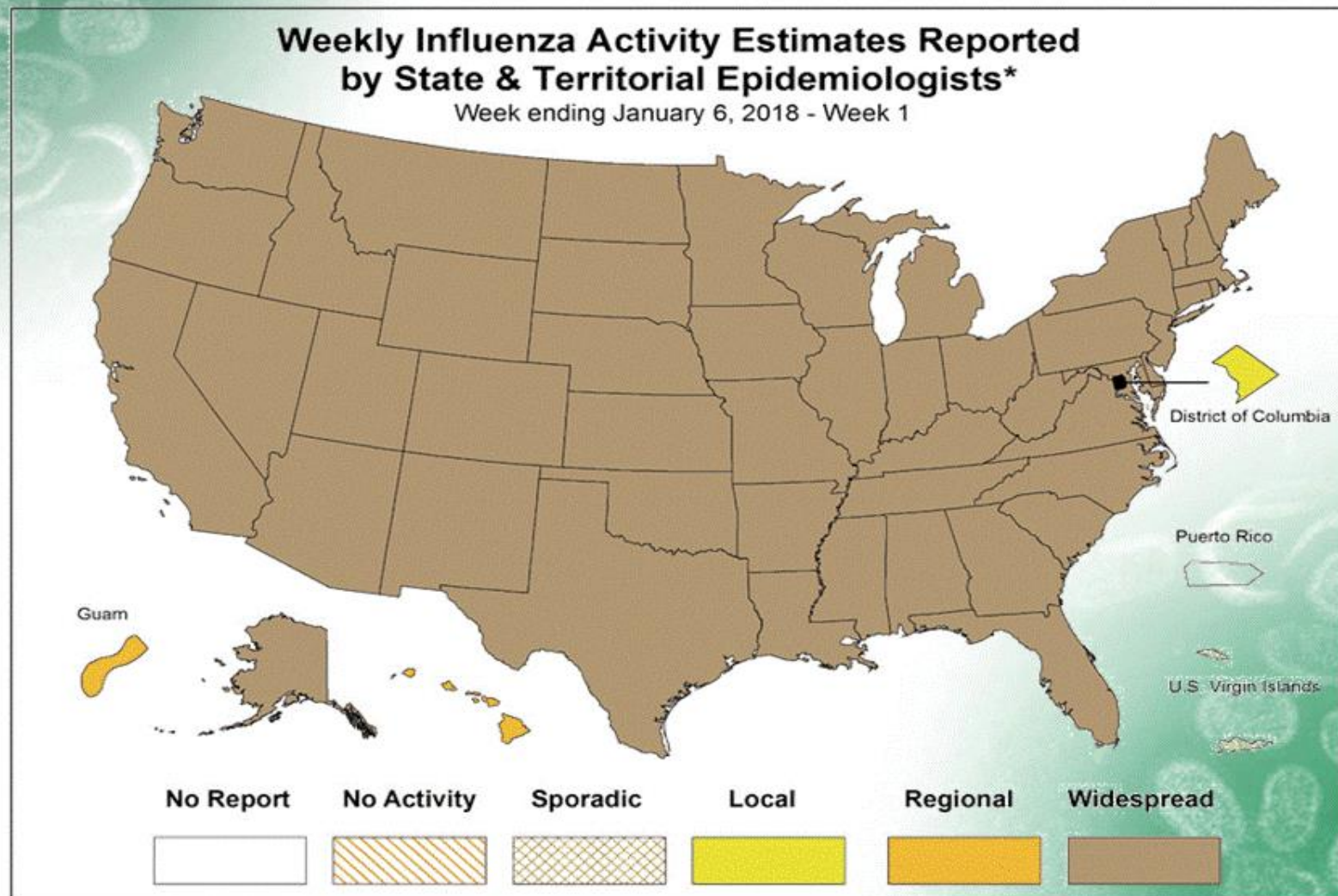
Percentage of Visits for Influenza-like Illness (ILI) Reported by  
the U.S. Outpatient Influenza-like Illness Surveillance Network (ILINet),  
Weekly National Summary, 2017-2018 and Selected Previous Seasons





# FLUVIEW

A Weekly Influenza Surveillance Report Prepared by the Influenza Division



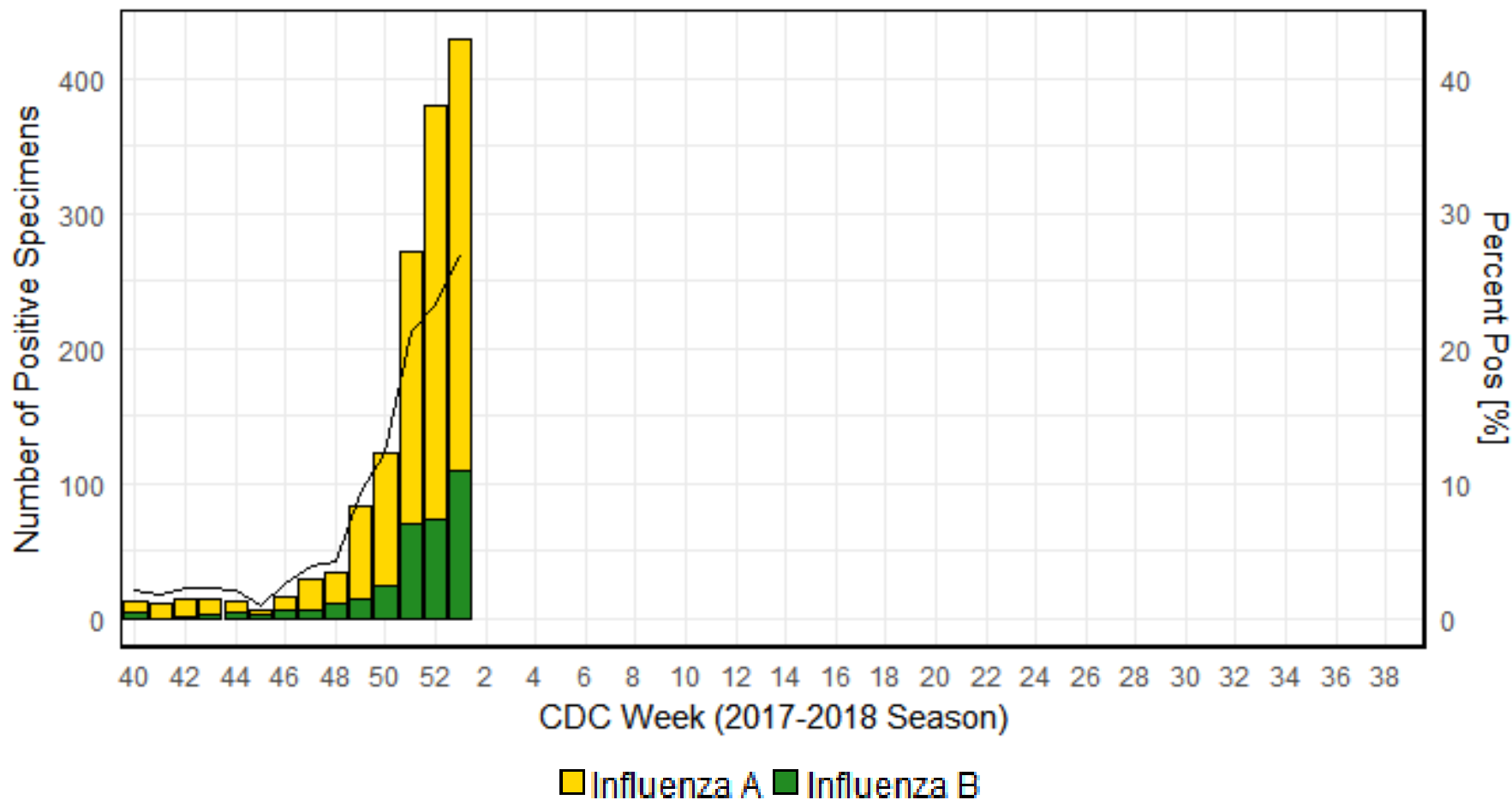
\* This map indicates geographic spread & does not measure the severity of influenza activity

# Vaccine Effectiveness

- Estimates should be out in Feb
- CDC has indicated that effectiveness for the H3N2 component (most common subtype being seen now) is believed to be about 30 percent based on early data

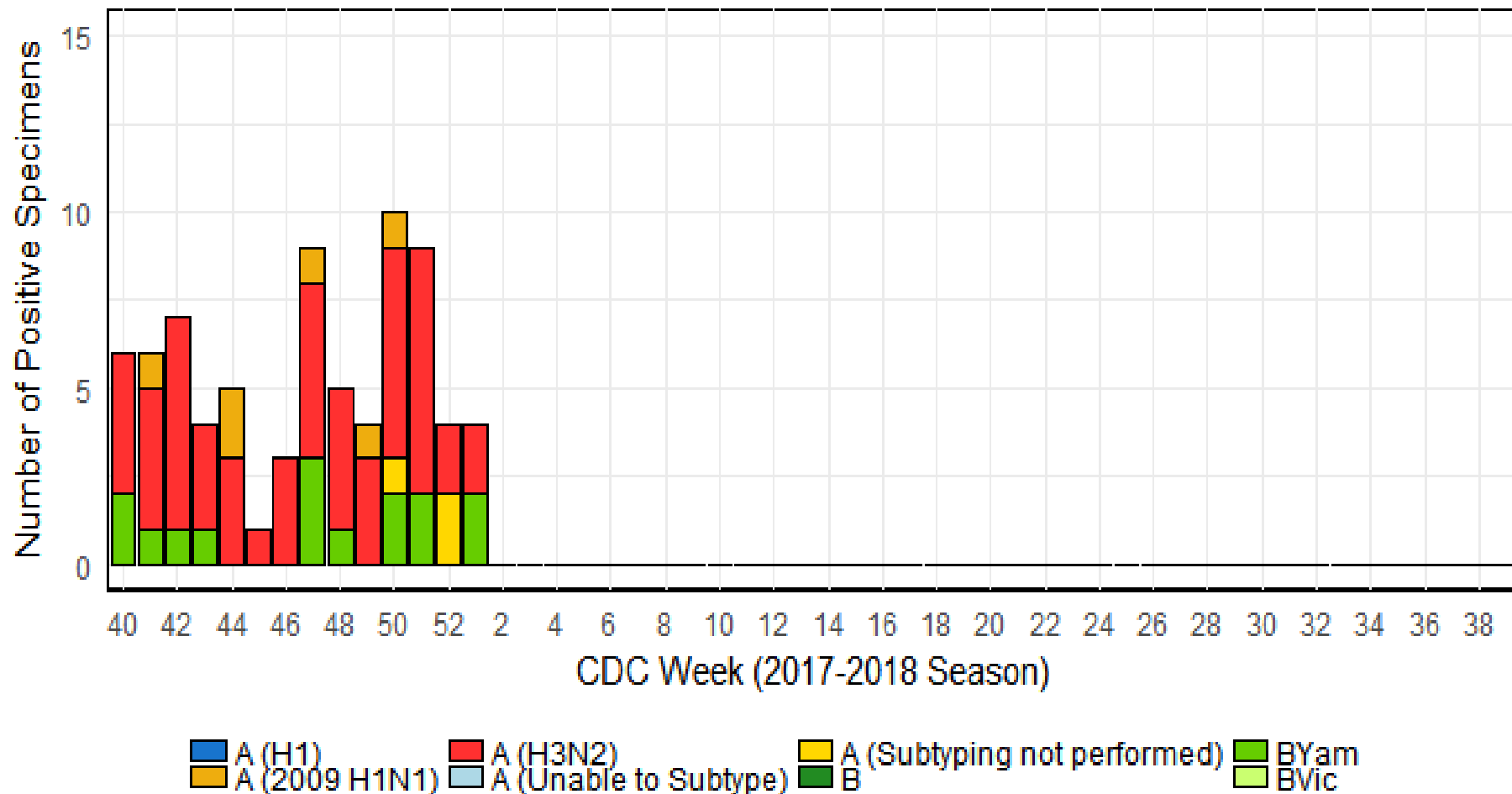
# WA Influenza Activity 2017-2018

# WA Influenza Laboratory Data



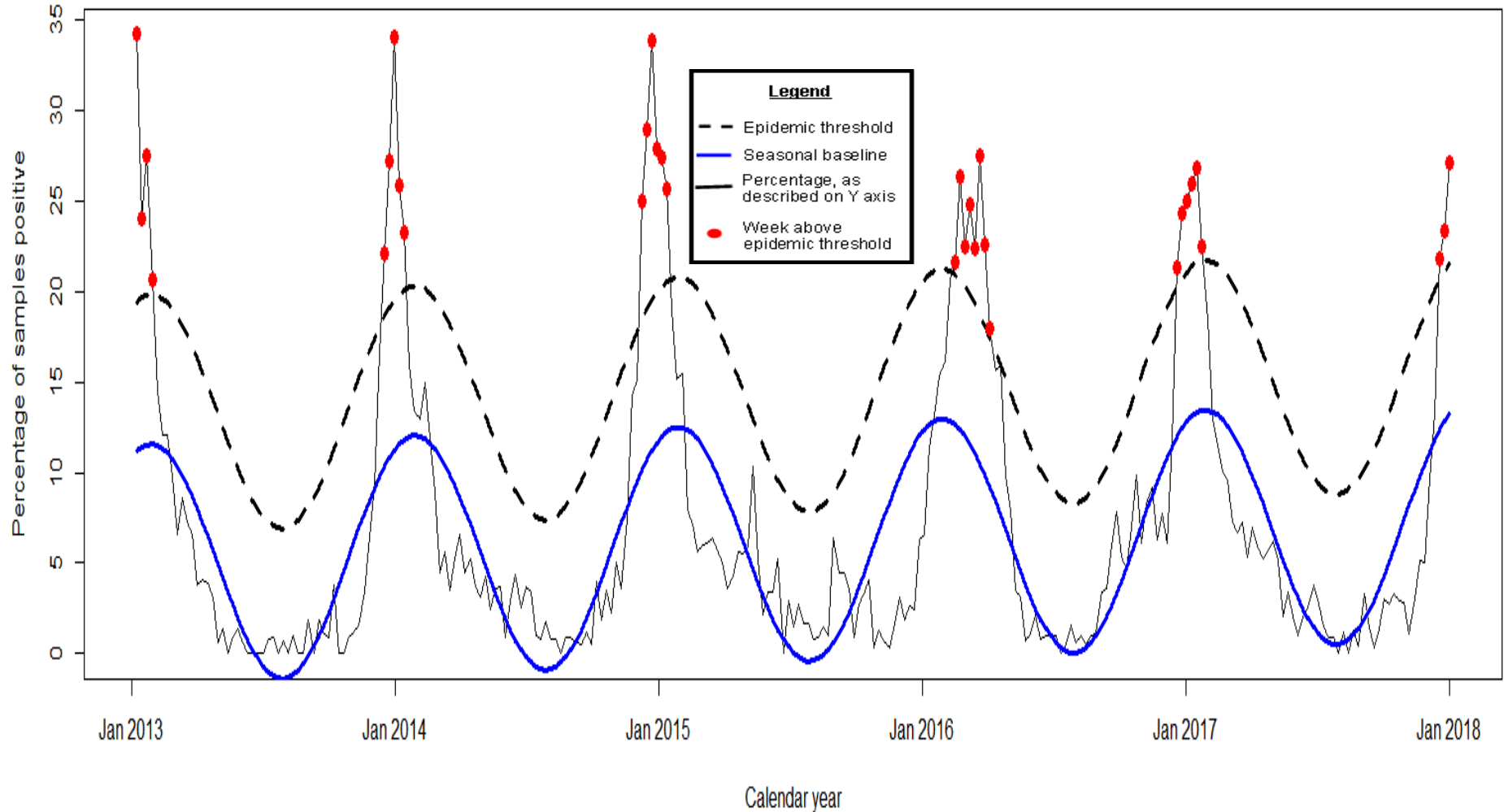
From [www.doh.wa.gov/Portals/1/Documents/5100/420-100-FluUpdate.pdf](http://www.doh.wa.gov/Portals/1/Documents/5100/420-100-FluUpdate.pdf)

# WA Influenza Laboratory Data



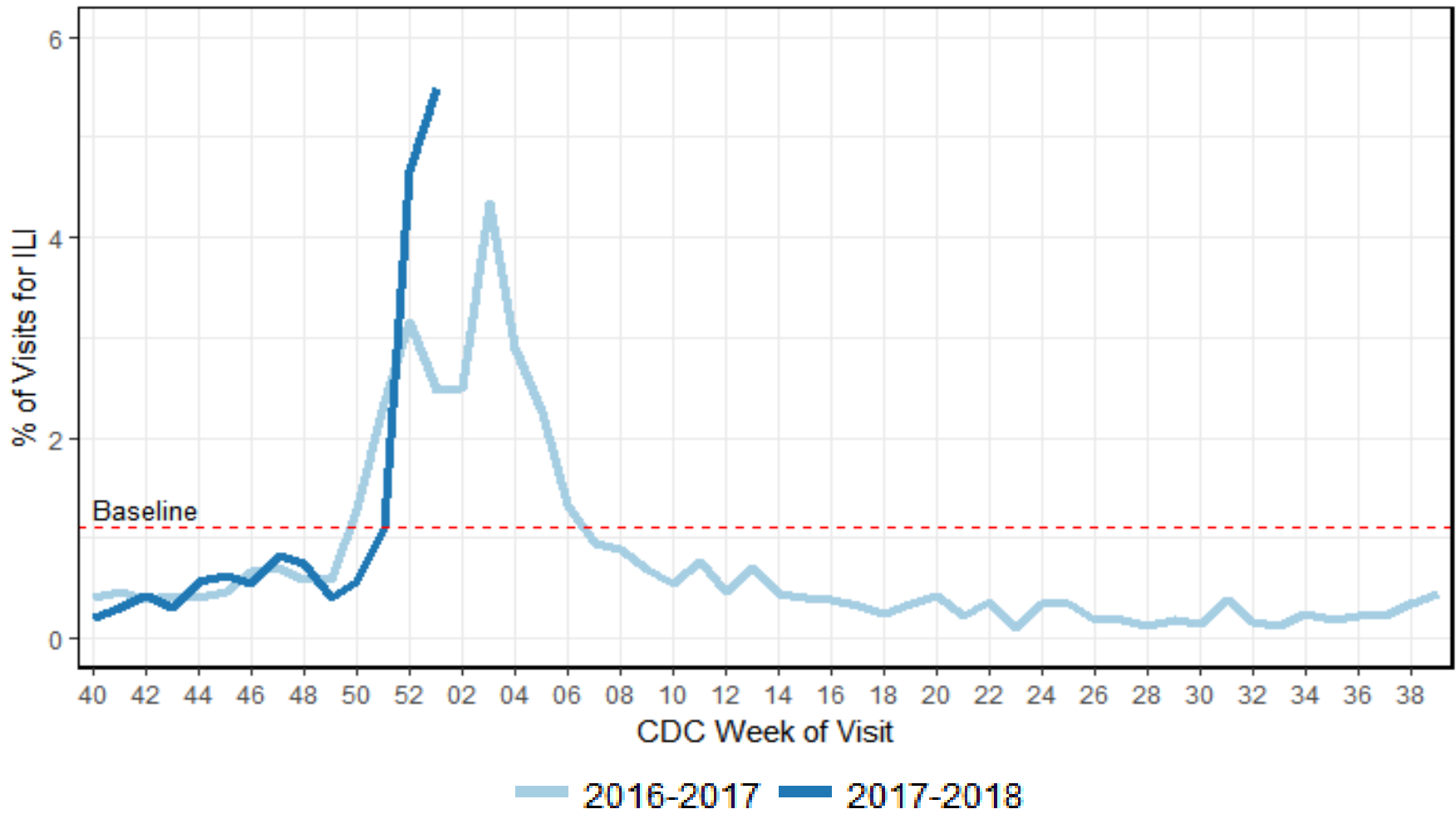


# Percentage of Specimens Positive for Influenza, WHO/NREVSS labs

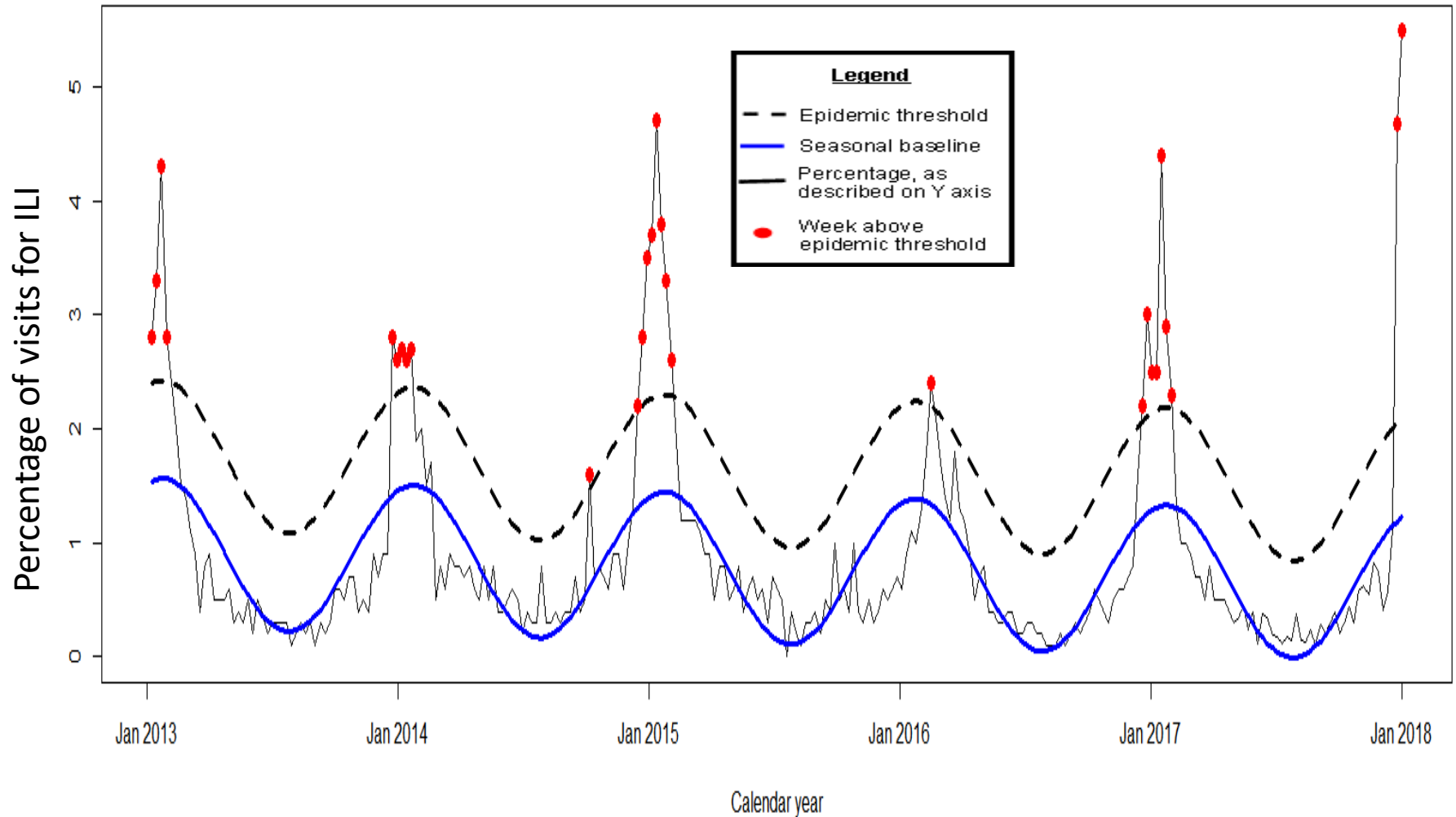


Thanks to Elaine Nsoesie

# WA ILINet Data

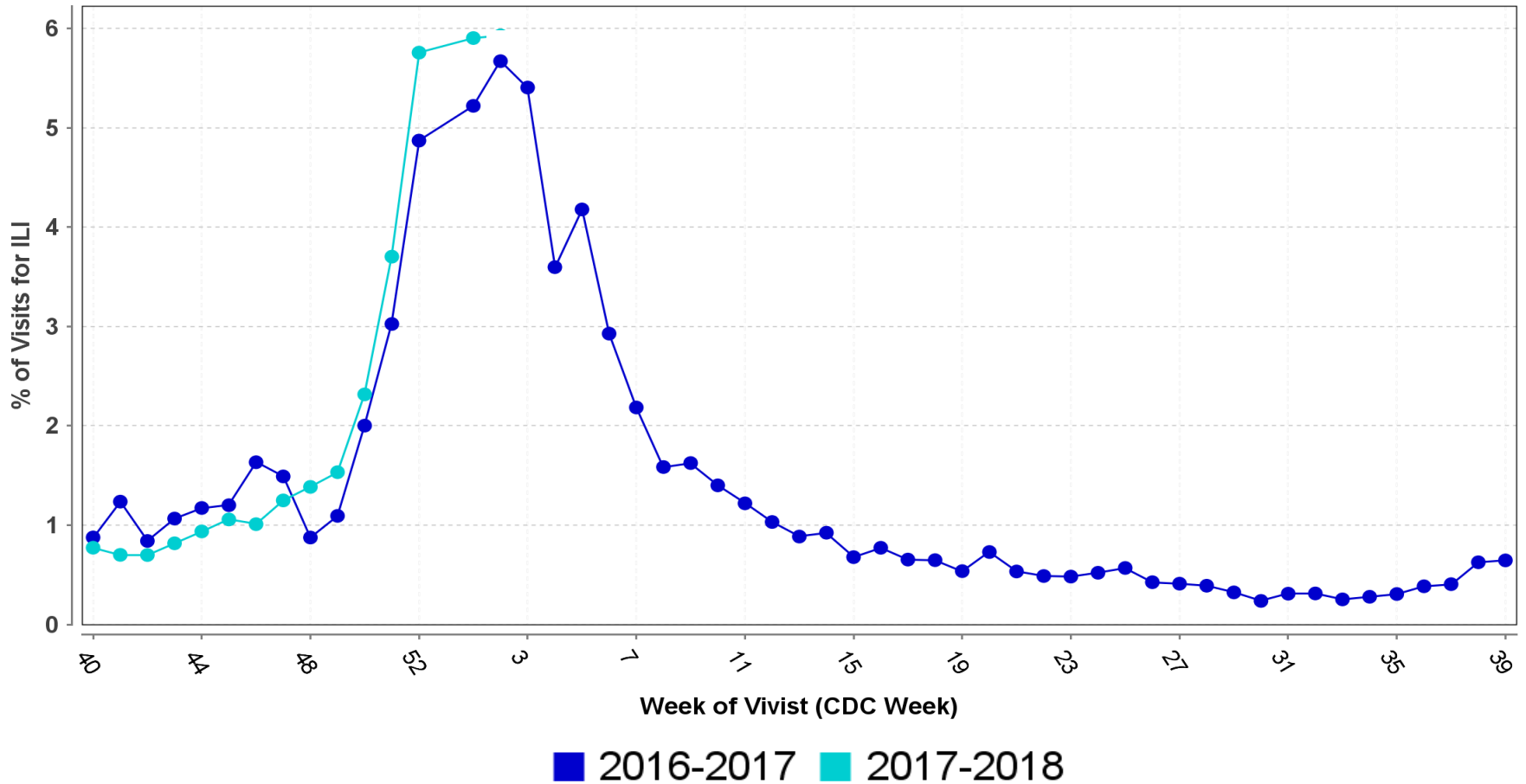


# Percentage of Visits for ILI, Sentinel Providers



Thanks to Elaine Nsoesie

# WA ESSENCE data



# WA Lab-Confirmed Influenza Deaths

| Season                    | Number of Deaths |
|---------------------------|------------------|
| <b>2017-2018, to date</b> | <b>46</b>        |
| 2016-2017, total          | 278              |
| 2015-2016, total          | 67               |
| 2014-2015, total          | 156              |
| 2013-2014, total          | 80               |
| 2012-2013, total          | 54               |

From [www.doh.wa.gov/Portals/1/Documents/5100/420-100-FluUpdate.pdf](http://www.doh.wa.gov/Portals/1/Documents/5100/420-100-FluUpdate.pdf)





# WA Lab-Confirmed Influenza Deaths, 2017-2018

| Age Group (in years) | Number of Deaths |
|----------------------|------------------|
| 0–4                  | 0                |
| 5–24                 | 0                |
| 25–49                | 3                |
| 50–64                | 8                |
| 65+                  | 35               |
| <b>Total</b>         | <b>46</b>        |

From [www.doh.wa.gov/Portals/1/Documents/5100/420-100-FluUpdate.pdf](http://www.doh.wa.gov/Portals/1/Documents/5100/420-100-FluUpdate.pdf)

# National Respiratory and Enteric Virus Surveillance System




 Centers for Disease Control and Prevention  
CDC 24/7: Saving Lives, Protecting People™

SEARCH 

CDC A-Z INDEX ▾

The National Respiratory and Enteric Virus Surveillance System (NREVSS)

NREVSS Home



Respiratory Syncytial Virus Surveillance +

Rotavirus Surveillance +

Human Metapneumovirus Surveillance +

Respiratory Adenovirus Surveillance +

Human Parainfluenza Virus Surveillance +

Participating Labs +

Contact Us

If you have questions about data collected, trends graphed, or labs participating, please

The National Respiratory and Enteric Virus Surveillance System (NREVSS) is a laboratory-based system that monitors temporal and geographic patterns associated with the detection of respiratory syncytial virus (RSV), human parainfluenza viruses (HPIV), respiratory and enteric adenoviruses, human metapneumovirus and rotavirus.

All data graphs on this site were last updated on **September 28, 2016**

RESPIRATORY SYNCYTIAL VIRUS

RESPIRATORY ADENOVIRUS

ROTAVIRUS

HUMAN PARAINFLUENZA VIRUS

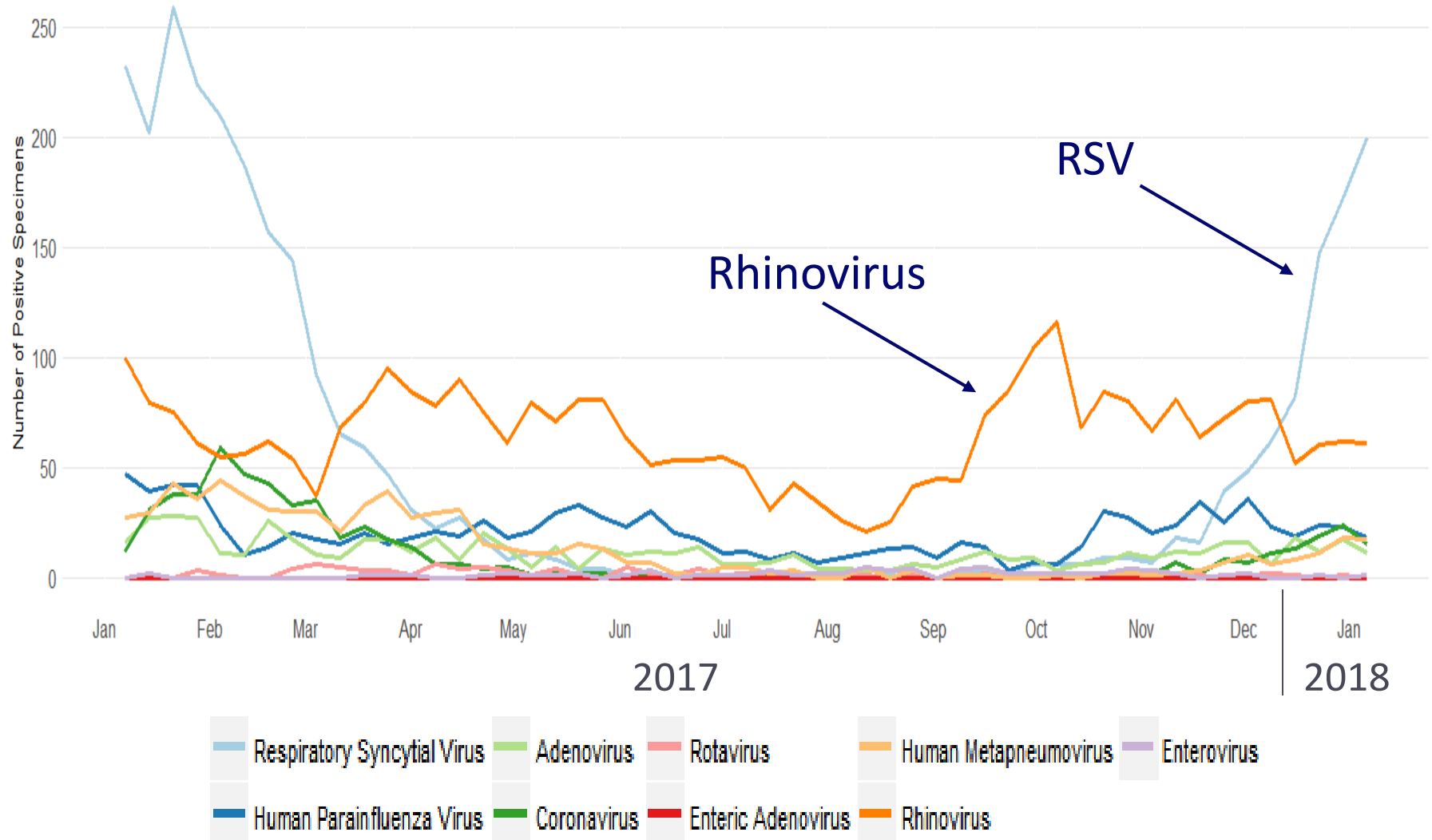
HUMAN METAPNEUMOVIRUS

In 2007, data collection for rhinovirus, enterovirus and human metapneumovirus began. Influenza specimen information, also reported to NREVSS, is integrated with [CDC Influenza Surveillance](#). Data are collected from collaborating university and community hospital laboratories, selected state and county public health laboratories, and commercial laboratories. These participating laboratories report virus antigen detections, isolations by culture and polymerase chain reaction (PCR)

# Labs Submitting Non-Flu Data



# Respiratory and Enteric Viruses, 2017-2018

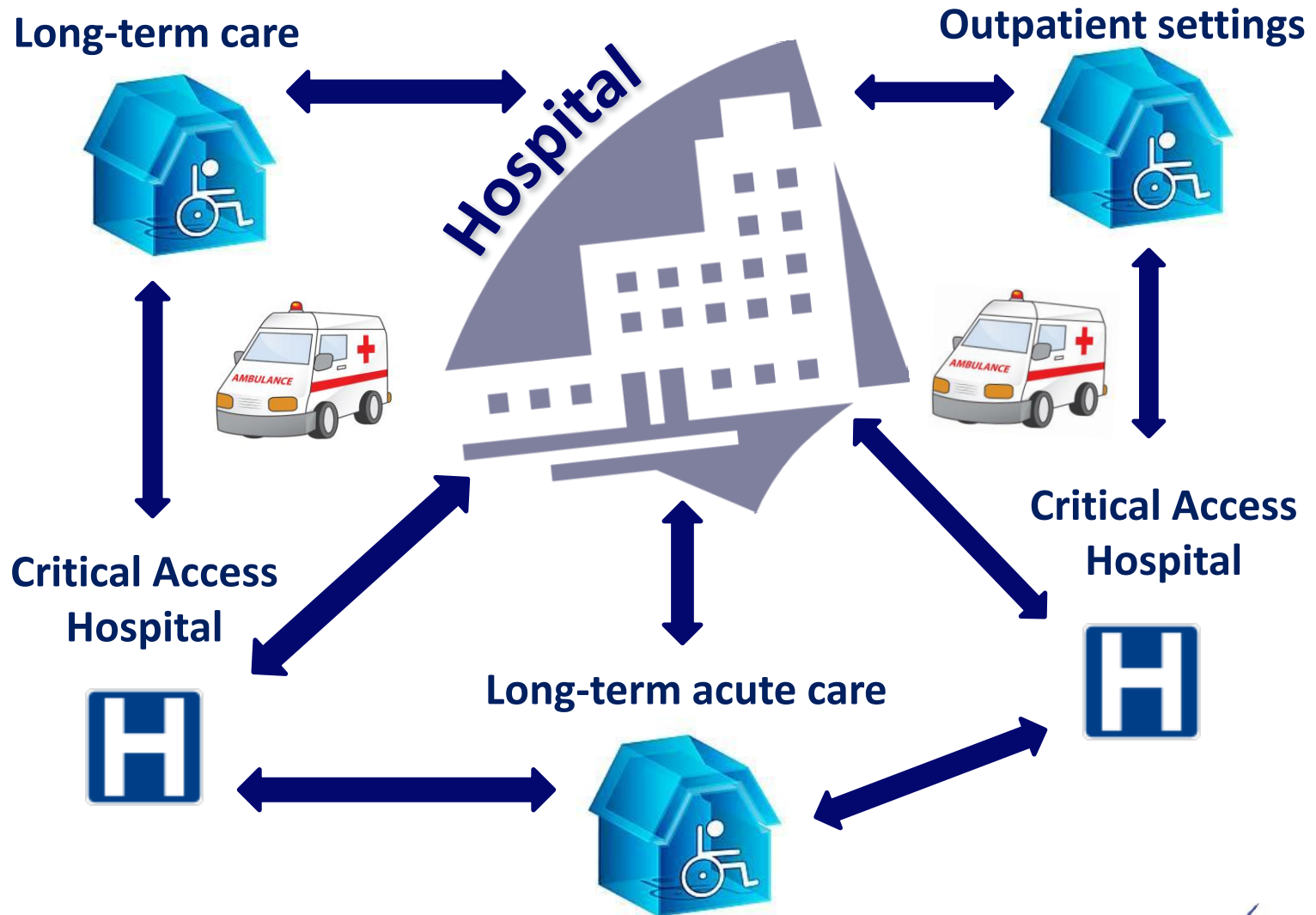




- R is a free, open source data analysis software
- The weekly flu report is an R Markdown file
- Download datasets and 'Knit' together the report
- Code could be modified for use by LHJs



# Health System



- Amy Abbott
- Elyse Bevers
- Holli Bruce
- Derel Glashower
- Candace Goehring
- Joni Hensley
- Laura Hoffman
- Nhan Le
- Nicola Marsden-Haug
- Patty Montgomery
- Malia Nogle
- Jeni Nybo
- Brenda Orffer
- Sara Podczervinski
- Krista Rietberg
- Madison Riethman
- Tashina Robinson
- Lisa Stubenrauch
- Deb Ward
- Jeff West

**Workgroup convened over summer 2017 to review and revise the long term care facility influenza-like illness materials available on the DOH website**

**Members from long term care, DOH, LHJs, DSHS**

# Flu Outreach to Long Term Care

**Insert Local Health Jurisdiction Logo**

## QUICK GUIDE FOR LONG TERM CARE FACILITIES—INFLUENZA OUTBREAKS

### INFLUENZA VACCINATION

Vaccinations can decrease likelihood of an outbreak, and in the event of an outbreak, can decrease hospitalizations and deaths among residents. The Centers for Disease Control and Prevention (CDC) recommends annual influenza vaccination for everyone 6 months and older, especially for residents and staff of long term care facilities.

- Vaccinate newly admitted residents and newly hired staff throughout the flu season.
- Keep a record of vaccination status of residents and staff.

### DIAGNOSIS

Common symptoms of influenza include: fever, fatigue, headache, cough, sore throat, runny or stuffy nose, chills, and muscle aches.

Elderly patients may experience more subtle symptoms, including anorexia, mental status changes, pneumonia, low-grade or no fever, worsening of chronic respiratory conditions or congestive heart failure.

**Familiarize yourself with signs and symptoms of influenza-like illness in the elderly.**

Even if influenza activity is low in the community, influenza testing should occur when any resident has signs and symptoms that could be due to influenza, and especially when two residents or more develop respiratory illness within 72 hours of each other.

### TREATMENT vs. PROPHYLAXIS

**Antiviral Treatment:** Give antiviral medication to all residents and staff with **confirmed or suspected** influenza-like illness. Antiviral treatment can shorten the duration of fever, illness symptoms, and hospitalizations, and may reduce the risk of complications such as pneumonia and respiratory failure or death.

### AT A GLANCE

|  |   |
|--|---|
| <b>Incubation period:</b>                | 1-4 days (avg. 2)   |
| <b>Period of communicability:</b>        | 1 day before symptoms start up to 10 days after symptom onset   |
| <b>Report to Public Health</b>           | Within 1 day of one lab-confirmed case of influenza or ≥ 2 cases of influenza like illness  |
| <b>Oseltamivir:</b>                      | <b>Treatment:</b> 75 mg twice daily for 5 days<br><b>Prophylaxis:</b> 75 mg once daily for a minimum of 2 weeks, continuing for at least 7 days after identification of last known case   |
| <b>Lab testing:</b>                      | Rapid influenza diagnostic test; * Viral cell culture; RT-PCR<br>*negative test does not rule out influenza   |
| <b>Further information including CDC</b> | <a href="https://www.doh.wa.gov/ForPublicHealthandHealthcareProviders/PublicHealthSystemResourcesandServices/Immunization/InfluenzaFluInformation">https://www.doh.wa.gov/ForPublicHealthandHealthcareProviders/PublicHealthSystemResourcesandServices/Immunization/InfluenzaFluInformation</a> |

[www.doh.wa.gov/ForPublicHealthandHealthcareProviders/PublicHealthSystemResourcesandServices/Immunization/InfluenzaFluInformation](https://www.doh.wa.gov/ForPublicHealthandHealthcareProviders/PublicHealthSystemResourcesandServices/Immunization/InfluenzaFluInformation)

# New and Revised Materials

- [Guidance for long term care facilities \(PDF\)](#) (Washington State Department of Health)
- [CDC guidance for long term care facilities](#) (Centers for Disease Control and Prevention)
- [ILI long term care quick guide for LHJ Modification \(Word\)](#) (Washington State Department of Health)
- [Hospital and long term care transfer and care of flu patients \(Word\)](#) (Washington State Department of Health)
- [FAQs regarding ILI in long term care facilities \(PDF\)](#) (Washington State Department of Health)
- [The Flu Stops Here - Staff: Poster for LHJ Modification \(Word\)](#) (Washington State Department of Health)
- [The Flu Stops Here - Visitors: Poster for LHJ Modification \(Word\)](#) (Washington State Department of Health)
- [Influenza Outbreak Recognition, Management, and Reporting in Long-Term Care Facilities \(PDF\)](#) (Washington State Department of Health)
- [Streamlining Care Transitions Between Hospitals and Long-Term Care Facilities During Flu Season \(PDF\)](#) (Washington State Department of Health)

[www.doh.wa.gov/ForPublicHealthandHealthcareProviders/PublicHealthSystemResourcesandServices/Immunization/InfluenzaFluInformation](http://www.doh.wa.gov/ForPublicHealthandHealthcareProviders/PublicHealthSystemResourcesandServices/Immunization/InfluenzaFluInformation)

# External Review of the U.S. Influenza Surveillance System

CDC and CSTE are convening a meeting of federal, state and local partners in April to:

- Evaluate the objectives, uses, and value of the components of the influenza surveillance system at the national, state, and local levels
- Identify and discuss ideas to improve existing surveillance systems
- Outline plans to achieve a more robust, efficient, and useful surveillance system for influenza at the national, state and local level



# External Review of the U.S. Influenza Surveillance System

CDC and CSTE are convening a meeting of federal, state and local partners in April to:

- Evaluate the objectives, uses, and value of the components of the influenza surveillance system at the national, state, and local levels
- Identify and discuss ideas to improve existing surveillance systems
- Outline plans to achieve a more robust, efficient, and useful surveillance system for influenza at the national, state and local level

Any suggestions I should bring forth?

# Discussion Among Members

- Have you seen much disease?
- Have you noticed any difference in vaccine uptake this year?
- Is there any additional support needed or recommendations for activities the department should be doing?

# Questions and Suggestions

Vivian Hawkins

[Vivian.Hawkins@doh.wa.gov](mailto:Vivian.Hawkins@doh.wa.gov)

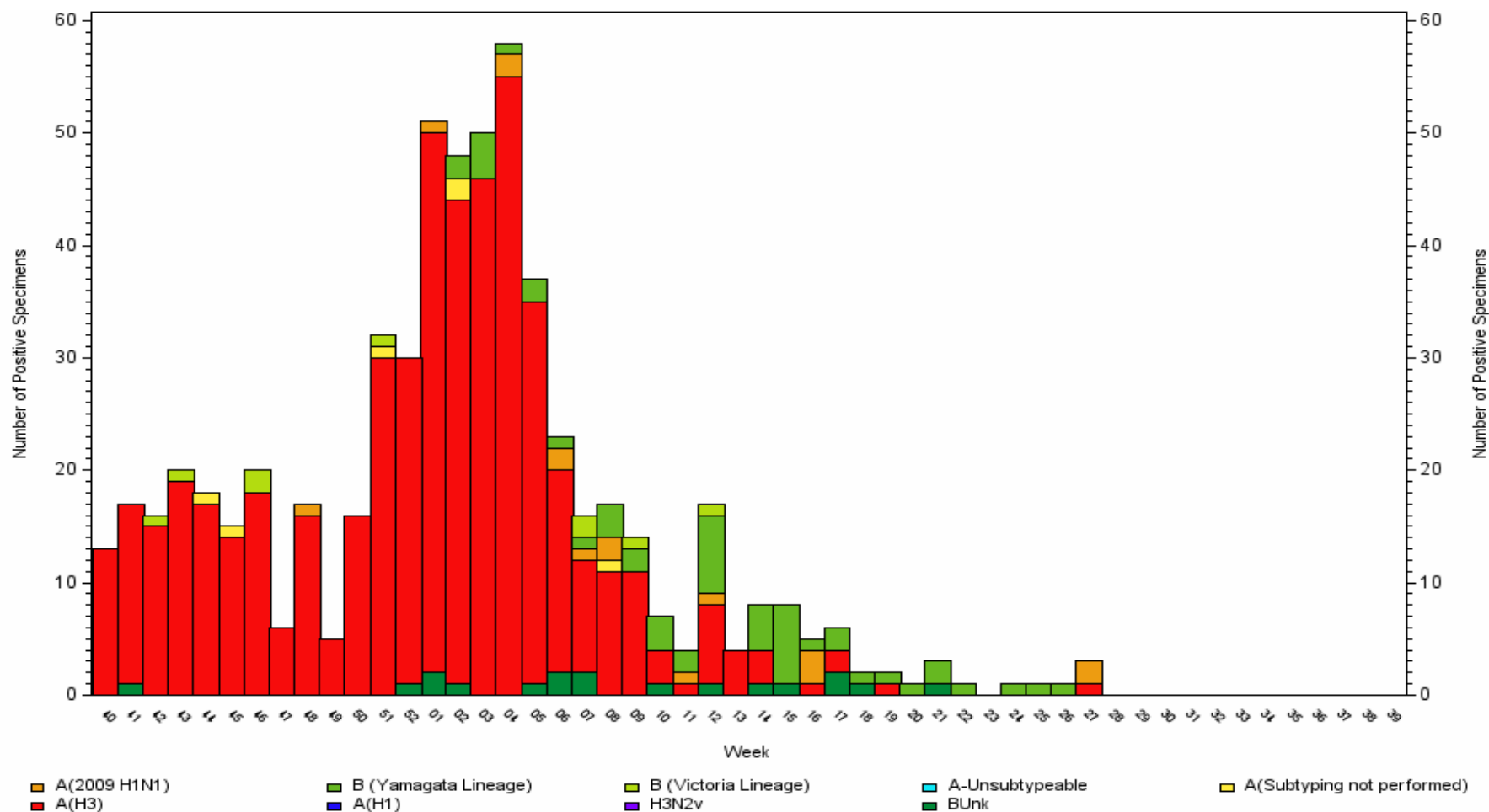
Elyse Bevers

[Elyse.Bevers@doh.wa.gov](mailto:Elyse.Bevers@doh.wa.gov)

DOH Communicable Disease Epi main line  
206-418-5500

# Influenza Laboratory Data (NREVSS), WA

2016-2017

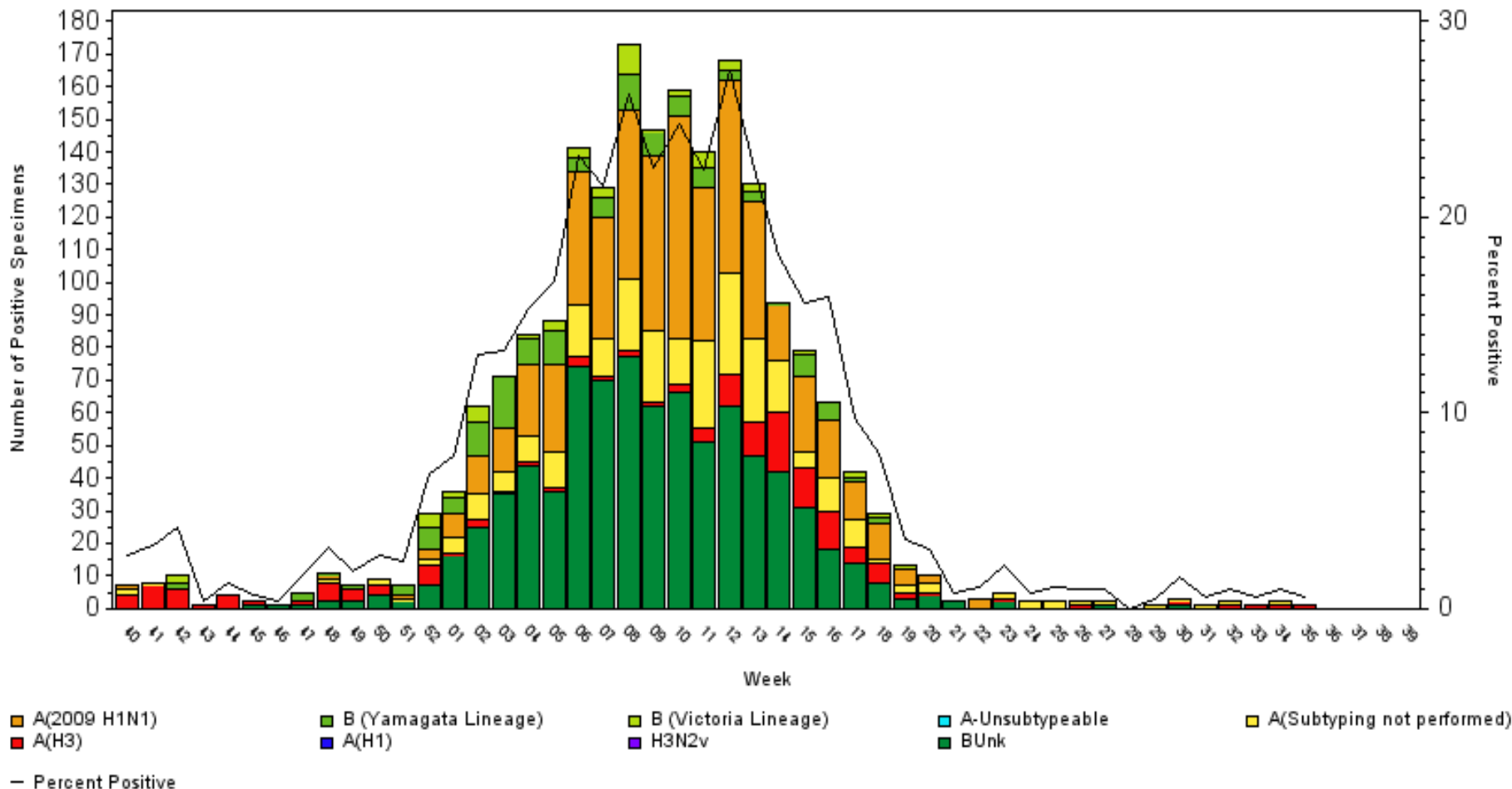


From <http://www.doh.wa.gov/Portals/1/Documents/5100/420-100-FluUpdate.pdf>

Updated 08/25/2017

# Influenza Laboratory Data (NREVSS), WA

2015-2016



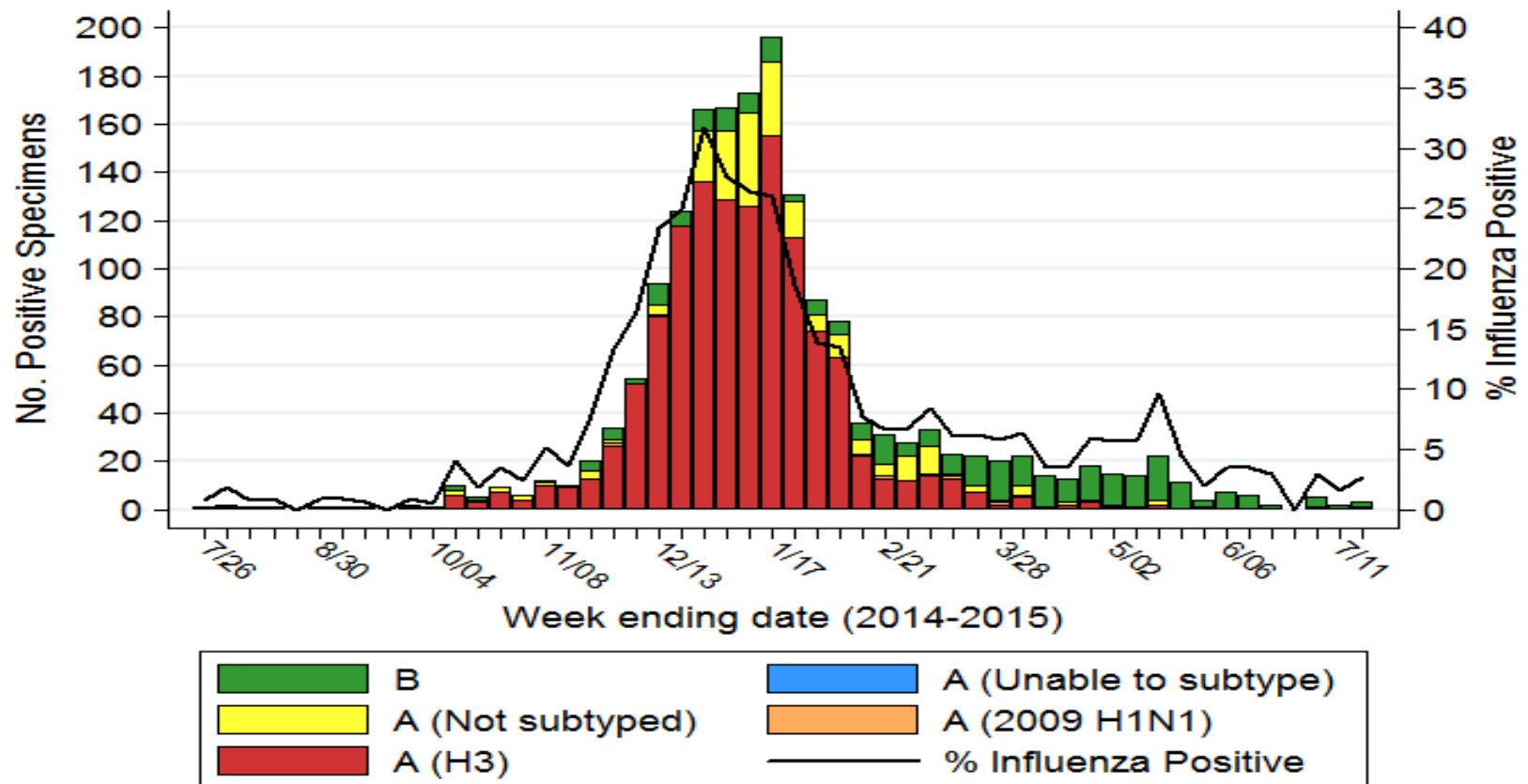
From

<http://www.doh.wa.gov/DataandStatisticalReports/DiseasesandChronicConditions/CommunityDiseaseSurveillanceData/InfluenzaSurveillanceData>

Updated 09/09/2016

# Influenza Laboratory Data (NREVSS), WA

2014-2015

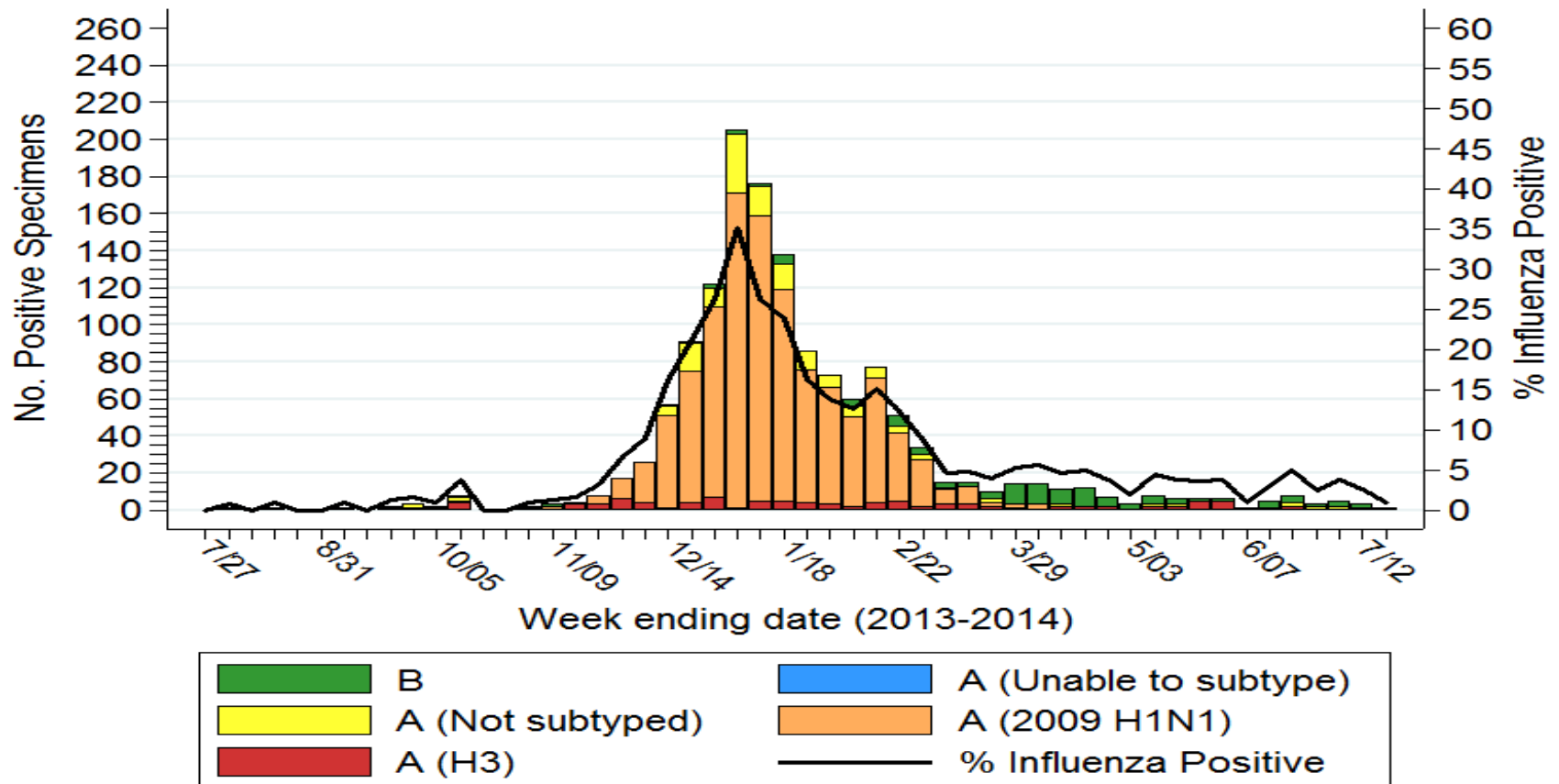


From

<http://www.doh.wa.gov/DataandStatisticalReports/DiseasesandChronicConditions/CommunicableDiseaseSurveillanceData/InfluenzaSurveillanceData>

# Influenza Laboratory Data (NREVSS), WA

2013-2014

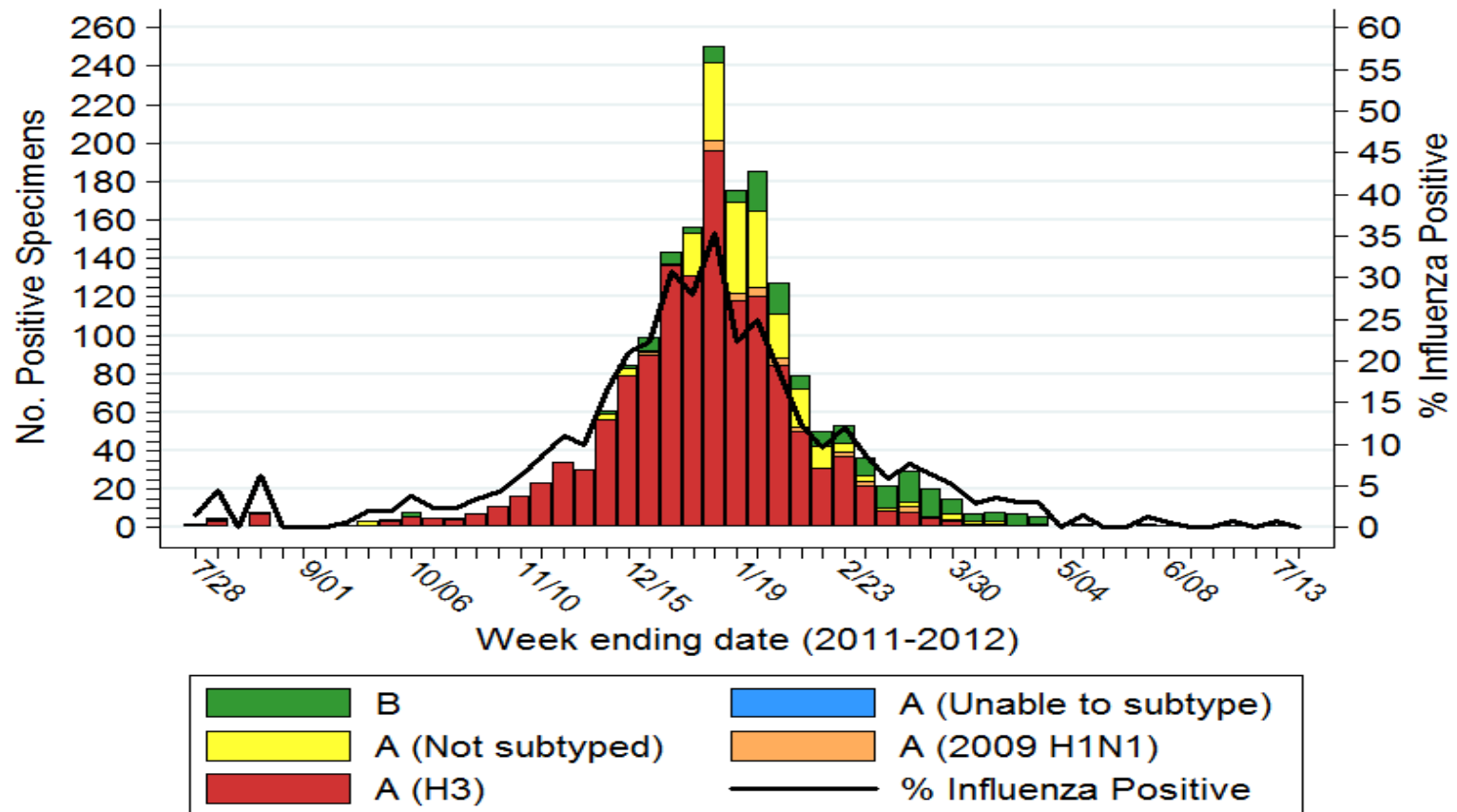


From

<http://www.doh.wa.gov/DataandStatisticalReports/DiseasesandChronicConditions/CommunityDiseaseSurveillanceData/InfluenzaSurveillanceData>

# Influenza Laboratory Data, WA

2012-2013



From

<http://www.doh.wa.gov/DataandStatisticalReports/DiseasesandChronicConditions/CommunicableDiseaseSurveillanceData/InfluenzaSurveillanceData>