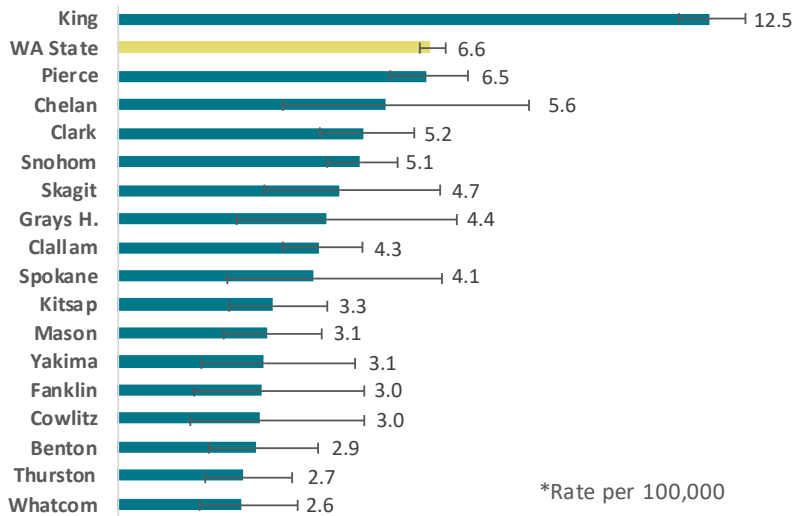




13,810 People are Living with HIV
in Washington:
1 in 10 Don't Know It

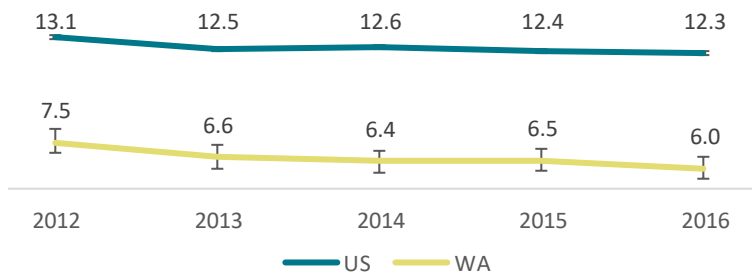
New HIV Case Rate by County, 2012-2016



461
DIAGNOSES PER YEAR
2012-2016

290
GAY AND BISEXUAL MEN
65
HETEROSEXUALS
57
PEOPLE WHO INJECT DRUGS

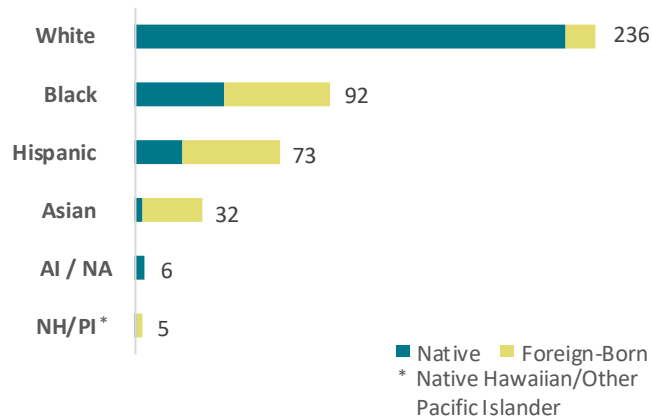
New HIV Cases per 100,000



29%

Of New HIV Cases are Foreign-Born (2012-2016)

New HIV Cases/Year, 2012-2016



Gender of New Cases

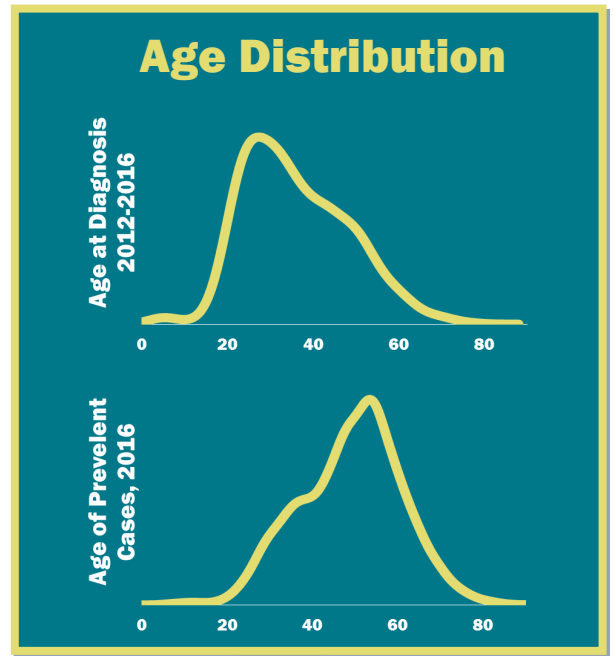
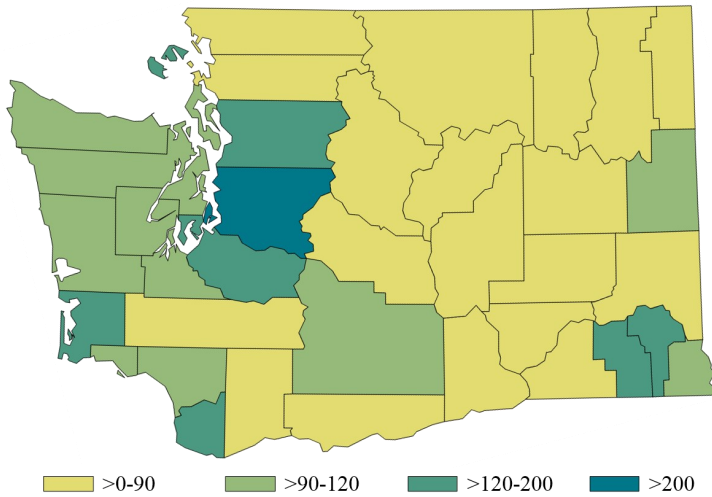


82% are Male

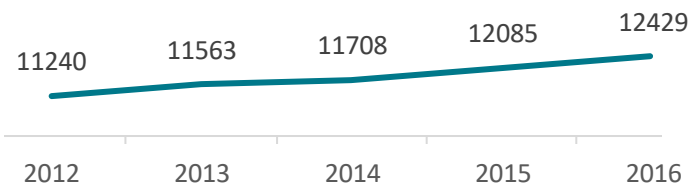
17% are Female

1% are Transgender

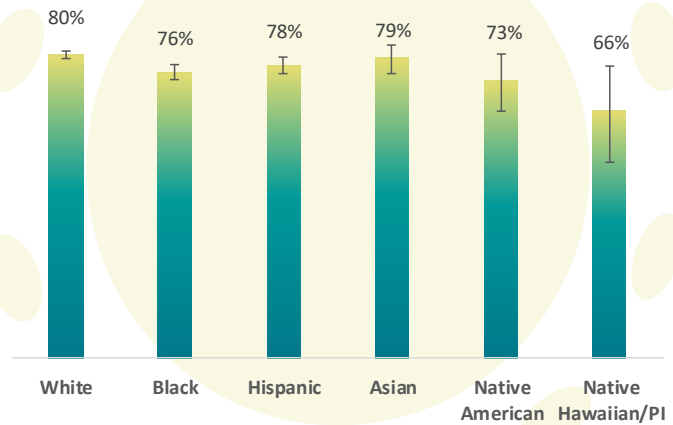
People Living with Diagnosed HIV: Rate per 100,000



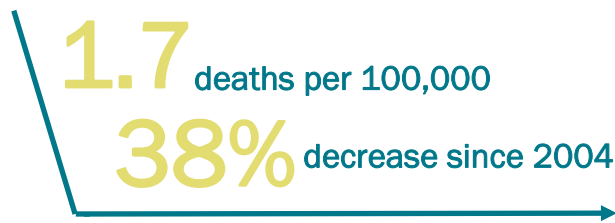
People Living with Diagnosed HIV



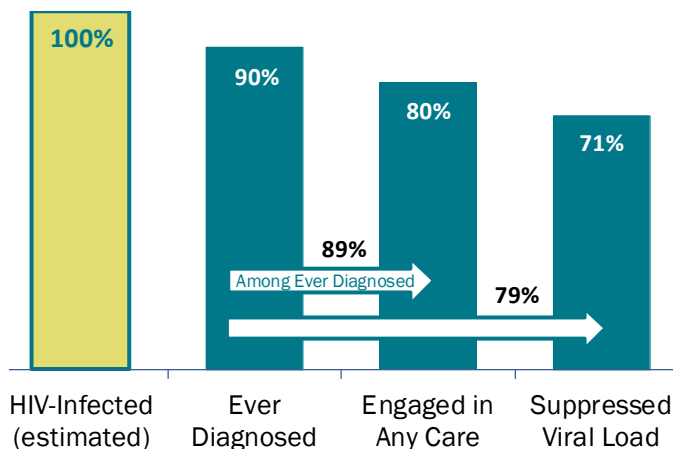
Viral Suppression of Diagnosed Cases by Race: 2016



Age Adjusted Mortality: 2012-2016



2016 HIV Care Continuum (n=13,810)



80% of Diagnosed Men Who Have Sex With Men Were Virally Suppressed in 2016
73% of People Who Inject Drugs Were Virally Suppressed
77% of People in All Other Transmission Categories Were Virally Suppressed

FOR MORE INFORMATION: Washington State Department of Health, Office of Infectious Disease Assessment Unit
<http://www.doh.wa.gov/DataandStatisticalReports/DiseasesandChronicConditions/HIVAIDSData>