

**Washington State
Department of Health
Public Health Laboratories
Contact list**

Administration

Jerrod Davis
Assistant Secretary

Dr. Romesh Gautom
Laboratory Director

Jeff Baggett Jeff.Baggett@doh.wa.gov
Director of Operations
(206) 418-5490

Deputy Director

Dr. Vince Aoki Vince.Aoki@doh.wa.gov
Deputy Director

Newborn Screening Program

Dr. John Thompson John.Thompson@doh.wa.gov
(206) 418-5531

Microbiology Lab

Brian Hiatt Brian.Hiatt@doh.wa.gov
(206) 418-5471

Environmental Sciences Lab

Shelley Lankford Shelley.Lankford@doh.wa.gov
(206) 418-5520

Laboratory Safety

Heather Matthies Heather.Matthies@doh.wa.gov
(206) 418-5524

Laboratory Training Program

Dr. Joseph Aharchi Joseph.Aharchi@doh.wa.gov
(206) 418-5401

**Washington State
Department of Health
Public Health Laboratories**

1610 NE 150th Street
Shoreline, WA 98155-7224
Phone: 206-418-5400
Fax: 206-367-1790

[www.doh.wa.gov/PublicHealthandHealthcareProviders/
PublicHealthLaboratories.aspx](http://www.doh.wa.gov/PublicHealthandHealthcareProviders/PublicHealthLaboratories.aspx)



For Driving Directions go to:

[www.doh.wa.gov/
PublicHealthandHealthcareProviders/
PublicHealthLaboratories/DrivingDirections.aspx](http://www.doh.wa.gov/PublicHealthandHealthcareProviders/PublicHealthLaboratories/DrivingDirections.aspx)

Publication Number 301-015



**Public
Health
Laboratories**



1610 NE 150th Street
Shoreline, WA 98155-7224

PUBLIC HEALTH
ALWAYS WORKING FOR A SAFER AND
HEALTHIER COMMUNITY

About Washington Public Health Laboratories

The Public Health Laboratories (the Lab) provide services to protect and improve the health of people in Washington State.

Tracking and monitoring diseases, testing environmental samples, and screening newborns for inherited conditions are just a few examples.

We provide training to local health and clinical laboratory professionals in laboratory methods and safe handling of samples around the state. Our laboratory incorporates a number of safety features including building design, specialized equipment, and safety procedures.

The Lab is accredited by the College of American Pathologists to ensure that we meet national standards for testing patient clinical samples, like blood. The Lab is also inspected by other state and federal agencies and the Centers for Disease Control & Prevention.

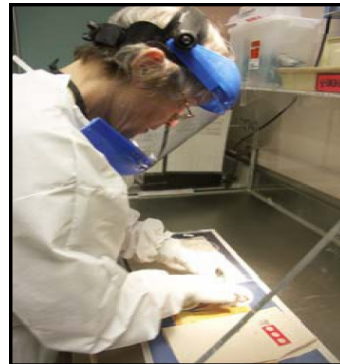
The Lab is open for a limited number of tours at this time. To discuss a possible tour please call (206) 418-5401.



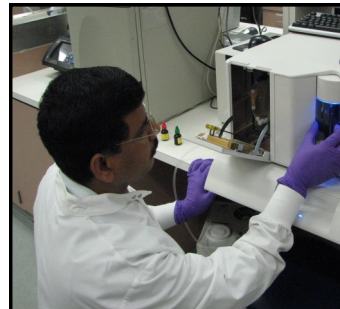
**Dr. Romesh Gautam,
Laboratory Director**



The Newborn Screening Program screens for 32 metabolic conditions that can cause death or disability if not treated early in life, such as sickle cell, cystic fibrosis, and phenylketonuria (PKU).



The Microbiology Lab tests samples and helps identify a variety of bacteria, viruses and parasites which can cause disease such as HIV, influenza, measles, West Nile virus, TB, Malaria and Rabies.



The Environmental Sciences Lab tests shellfish and marine water for contaminants that could make people sick. The Lab also tests samples of air, water, and soil for biological, chemical and radiological contamination.



The Operations and Technical Support Group provides quality assurance, receives samples, and maintains the facility. They also train staff in safety practices and laboratory procedures.

Services We Provide

Lab testing for:

- ✓ Newborn screening
- ✓ Infectious diseases
- ✓ Foodborne diseases
- ✓ Environmental contaminants

Consultation to help:

- ✓ Track disease outbreaks to prevent spread of disease
- ✓ Make sure newborns with rare inherited disorders receive immediate treatment
- ✓ Identify rare diseases
- ✓ Identify unknown substances for law enforcement or first responders

Training on:

- ✓ Laboratory methods
- ✓ Laboratory safety procedures

Partners We Work With

- ✓ Local county health departments
- ✓ Health care providers
- ✓ Hospitals and clinics
- ✓ Private laboratories
- ✓ Environmental health programs
- ✓ Federal agencies
- ✓ Law enforcement

PUBLIC HEALTH
ALWAYS WORKING FOR A SAFER AND
HEALTHIER COMMUNITY