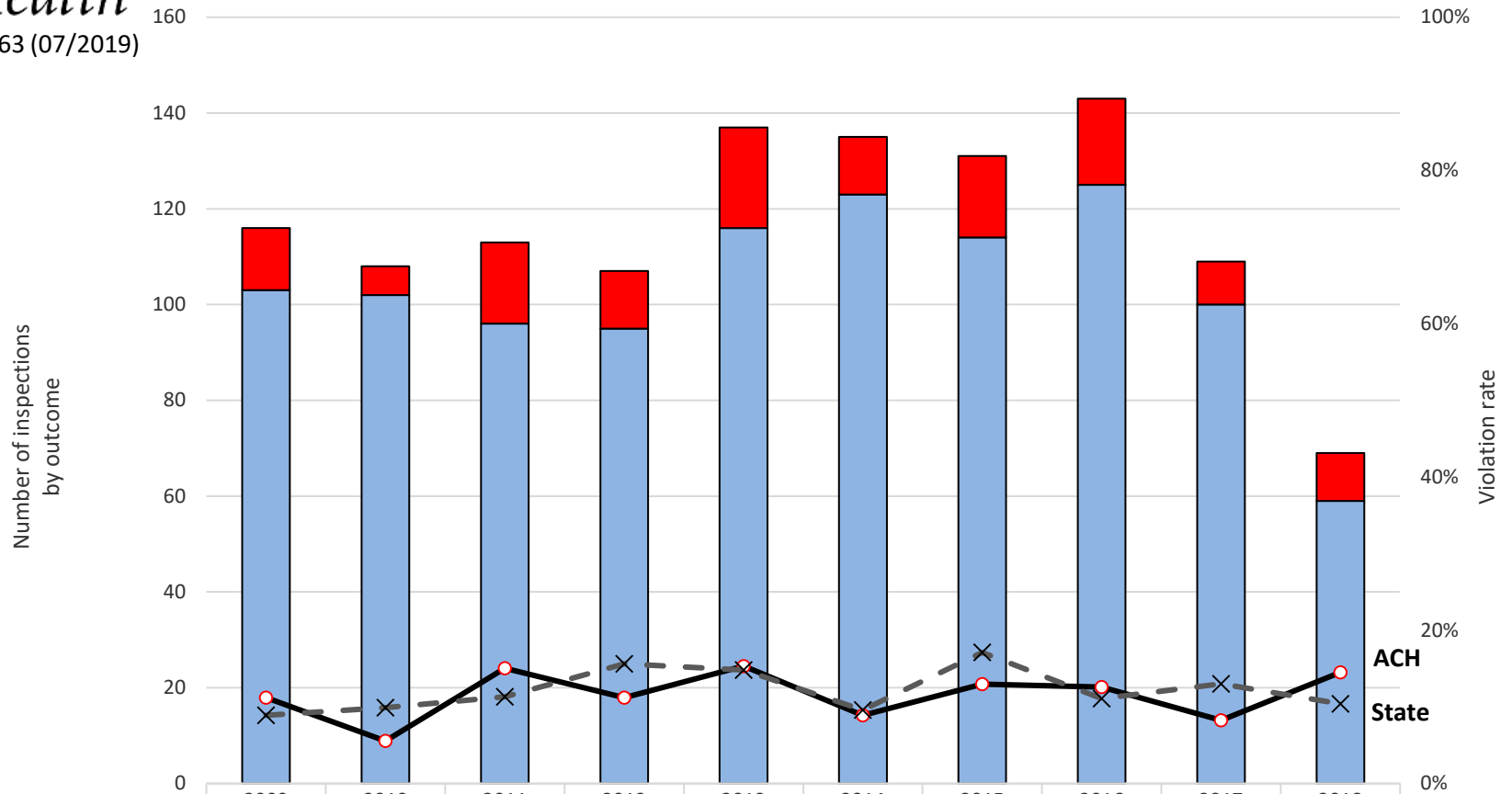




DOH340-163 (07/2019)

## Sales of Tobacco to Minors Better Health Together ACH and Washington State



	2009	2010	2011	2012	2013	2014	2015	2016	2017	2018
<span style="color: red;">■</span> # of ACH violations	13	6	17	12	21	12	17	18	9	10
<span style="color: blue;">■</span> # of compliant ACH checks	103	102	96	95	116	123	114	125	100	59
<span style="color: black;">—●—</span> ACH violation rate	11.2%	5.6%	15.0%	11.2%	15.3%	8.9%	13.0%	12.6%	8.3%	14.5%
<span style="color: black;">—X—</span> State violation rate	8.9%	9.9%	11.3%	15.6%	14.8%	9.6%	17.1%	11.1%	13.0%	10.4%

Source: Washington State Department of Health  
Synar Compliance Check Database 2009-2018

Technical note: Overall statewide rates are based on a yearly state Synar sample. County attempts represent only eligible and completed attempts. County specific rates are based on a county oversample that is not a part of the state sample. Counties were not oversampled in 2018.

Better Health Together Accountable Community of Health (ACH) counties: Adams, Ferry, Lincoln, Pend Oreille, Spokane, and Stevens